



MURPHY DOOR

Murphy Bed - vertical



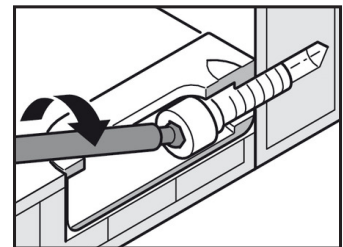
Installation Video

Please watch the instruction video prior to beginning assembly.

Your Murphy Bed uses a Cabineo Tool that rotates Cabineo Screws from an angle. With the Cabineo Tool attached to your drill, slide the tool through the housing and use a low setting to tighten the Cabineo Screw.

WARNING

The Murphy Bed/Wall System contains stored energy. Failure to use and follow these instructions during the installation process could result in severe personal injury to user or damage to the product.



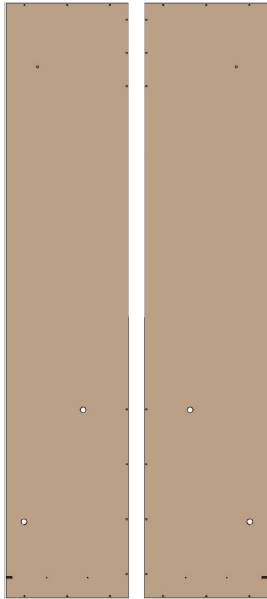
FINISHING

Wood pieces should be painted or stained within 10 day of receipt, prior to assembly. Commercial grade furniture paints and stains are required. DO NOT use water-based paints.

MATTRESS

Choose an appropriately size mattress for your frame, 8" to 11" thick. The mattress should be rigid enough to stand on end without sagging or doubling over. We recommend using a coil mattress but some memory foam mattresses will work. Bed linens may be stored on the mattress. DO NOT store pillows on the bed inside of the bed cabinet. Damage may occur if doing so.

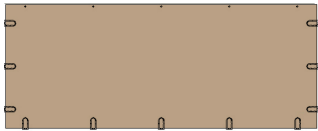
1 Left & right bed side panels



2 Top bed panel



3 Bottom bed panel



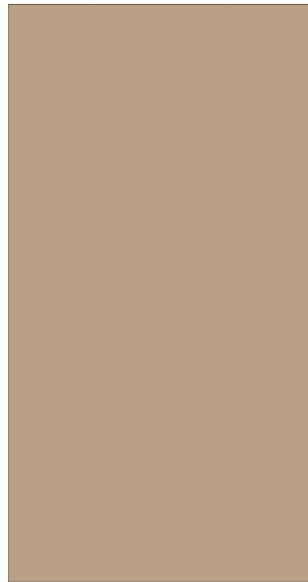
4 Bottom Side Trim



5 Top Back Panel



6 Face panels



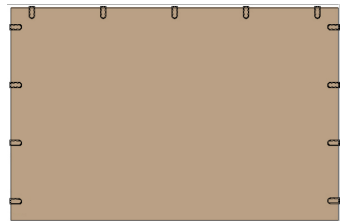
7 Headboard



8 Bottom front trim



9 Bottom back panel



10 Top cap



11 Long frame



12 Short frame



13 Gas struts



14 Articulating legs



15 Mechanism



16 Mechanism cover



17 Bed straps



18 Mounting bracket



19 Bed stop



20 Front plates



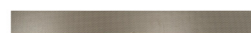
21 End covers



22 Slat end



23 Bed slats



24 Nuts, bolts, screws, & pegs



25 Install tools



Cabineo

Tools needed:

- Open & Box End Wrench Set
- Power Drill
- #2 Phillips Bits
- 8mm Deep, 1/2" Deep, and 7/16" Socket Bit
- #2 Phillips Screwdriver
- 1/16" Drill Bit
- Stud Finder
- 5mm & 6mm Allen Wrench (Included)
- Claw Hammer
- Tape Measure