



# CERTIFICATE OF ANALYSIS

## Certificate of Analysis C192

**Performed for:**  
White Label Liquid  
210 Fentress Blvd  
Daytona Beach, FL 32114

**Product Name:** Cheese Wraps

**Fill Weight:** 238 g  
**Lot / Batch#** 90808-006

**Completion Date:** 8-Aug-2019

**Expiration Date:** 7-Aug-2020



[Support@hemptestlab.com](mailto:Support@hemptestlab.com)

### CANNABINOID TEST

| Cannabinoids                 |        | Weight % | mg/g  |
|------------------------------|--------|----------|-------|
| Cannabinol                   | CBN    | 0.00%    | 0.000 |
| Delta-8-Tetrahydrocannabinol | Δ8-THC | 0.00%    | 0.000 |
| Delta-9-Tetrahydrocannabinol | Δ9-THC | 0.00%    | 0.000 |
| Cannabichromene              | CBC    | 0.00%    | 0.000 |
| Cannabidiolic Acid           | CBDA   | 0.00%    | 0.000 |
| Cannabidivarin               | CBDV   | 0.00%    | 0.000 |
| Cannabigerol                 | CBG    | 0.00%    | 0.000 |
| Cannabigerolic Acid          | CBGA   | 0.00%    | 0.000 |
| Tetrahydrocannabivarin       | THC-V  | 0.00%    | 0.000 |
| Tetrahydrocannabinolic Acid  | THC-A  | 0.00%    | 0.000 |
| Cannabidiol                  | CBD    | 0.03%    | 0.294 |

|                                       |         |       |
|---------------------------------------|---------|-------|
| <b>TOTAL CBD (CBD + CBDA X 0.877)</b> | 0.029 % | 0.294 |
| <b>TOTAL Δ9-THC</b>                   | 0.000 % | 0.000 |
| <b>TOTAL CANNABINOIDS</b>             | 0.029 % | 0.294 |

### SAMPLE



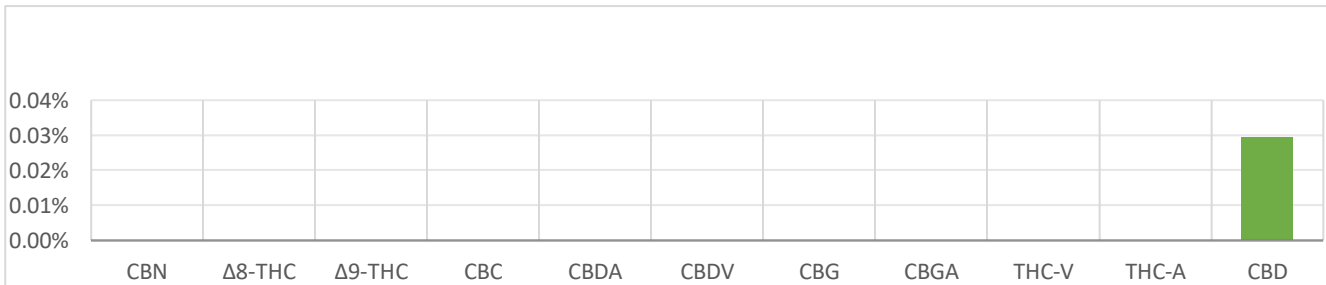
**00.0mg**

TOTAL Δ9-THC  
PER BOTTLE

**70mg**

TOTAL CBD  
PER BOTTLE

### ANALYTE BREAKDOWN



### COMMENTS:

Total CBD per bottle 70 mg

### HEMP TEST LAB

333 S. Yonge st.  
Ormond Beach, FL, 32174

(813)487-9915

[support@hemptestlab.com](mailto:support@hemptestlab.com)

[www.hemptestlab.com](http://www.hemptestlab.com)

**Lab Director: Steven Broad**

Hemp Test Lab uses its best efforts to deliver high-quality results and to verify that the data contained therein are based on sound scientific judgement and level listed are guidelines only and all data was reported based of standard laboratory procedures and deviations. However, Hemp Test Lab make no warranties or claims to that effect and further shall not be liable for any damage or misrepresentation that may result from the use or misuse of the data contained here in any way. Further, Hemp Test Lab makes no claims regarding representation of the analyzed sample to the larger batch from which it was taken. Data and information in this report are intended solely for the individual(s) for whom samples were submitted and as part of our strict confidentiality policy, Hemp Test Lab can only discuss results with the original client on record.