



A800 ROBOT VACUUM CLEANER

QUICK START GUIDE

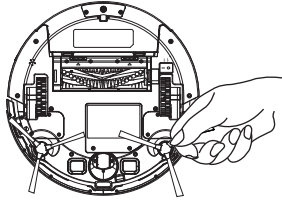


For FAQs and more information, please visit:

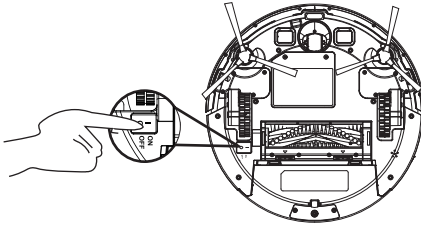
www.iamarey.com

Quick operating guide

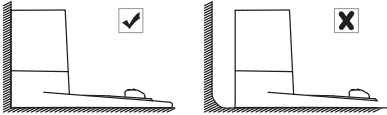
1. Attach side brushes to the bottom of A800 by pressing a brush into each slot until you hear the "click".



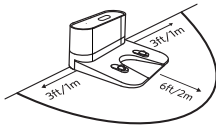
2. Turn on the main power switch on the bottom of A800 (1 stand for on, 0 stand for off).



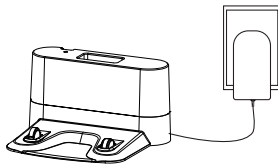
3. Place the Charging Dock on a hard, level surface and against a wall.



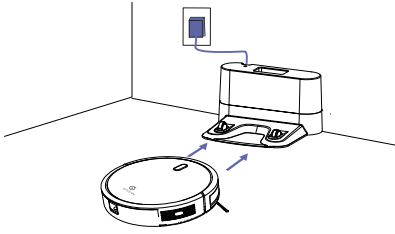
4. Make sure the place is open & uncluttered area leaving at least 6.5 feet in front of and 3.2 feet on both sides of the Charging Dock.



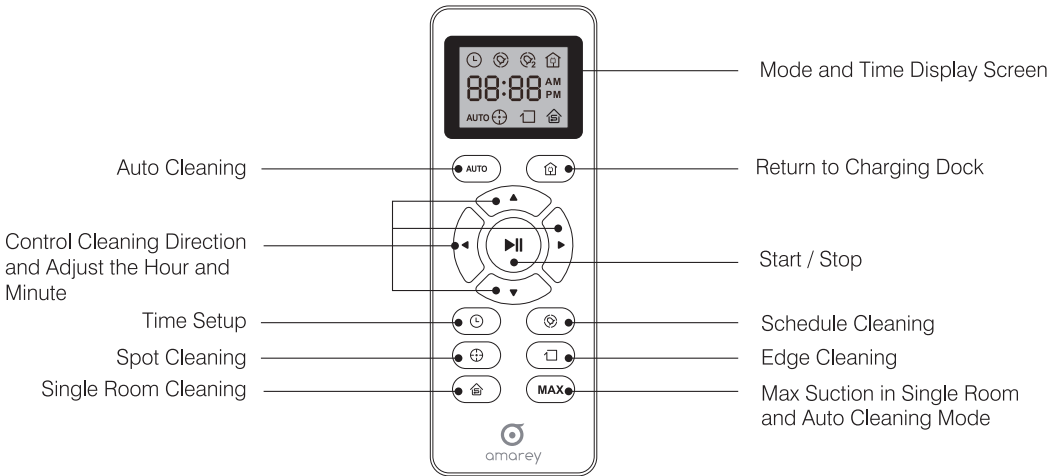
5. Always keep the Charging Dock plugged in, otherwise A800 will not automatically return to it.



- Place A800 onto the Charging Dock, making sure the metal charging contacts on the Charging Dock match up with those underneath the Robot.



Remote Control



Note: Please point directly the remote control to the robot within 5m when pressing.