

# “Drag & Drop” Function

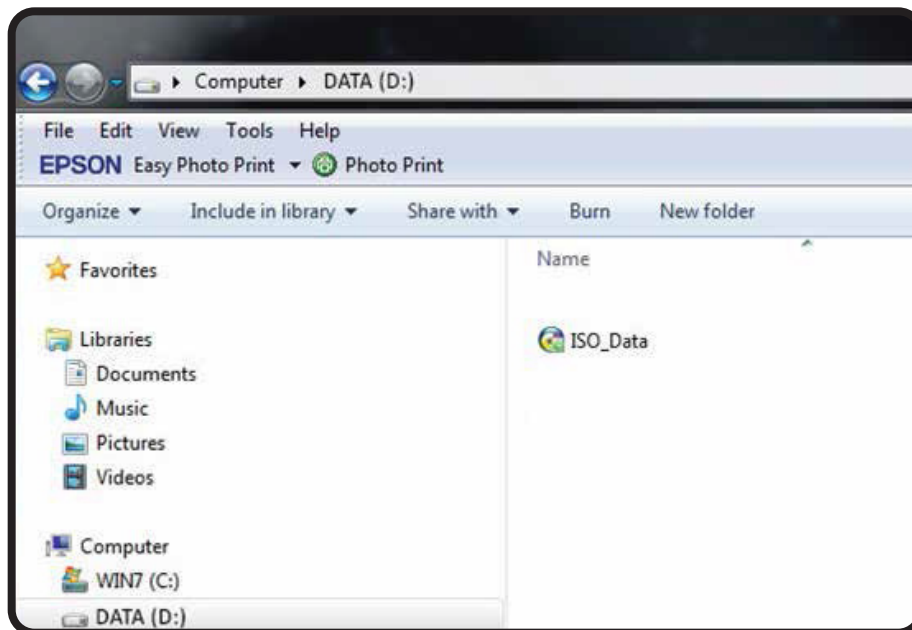
## How to “Drag & Drop” an ISO file from a computer to a duplicator’s Hard Disk Drive (HDD)

If you have purchased a PC Link ISO duplicator then you can use the “Drag & Drop” function to transfer an ISO file from your computer to the duplicator’s HDD as the master source for duplication. It will save time by not having to make a master disc on computer.

**Here are the steps in order to transfer an ISO file from a computer to a duplicator’s HDD.**

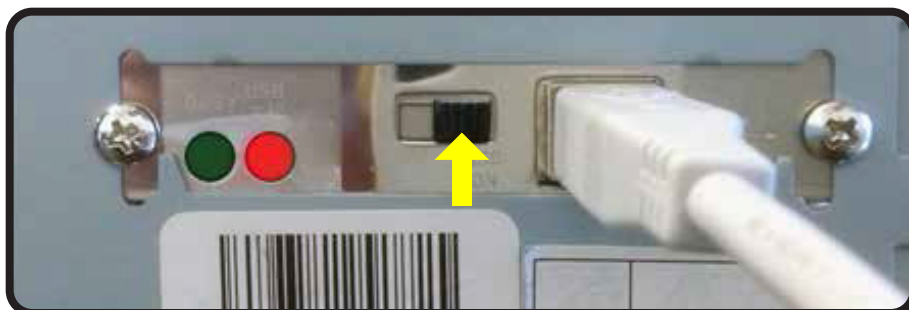
1

First make an ISO file on a computer. Select the data, audio or video files on computer that you want to duplicate, use burning software like imgburn and Nero to convert these files into one ISO file, which is an image of the selected files. Save the ISO file on your computer.



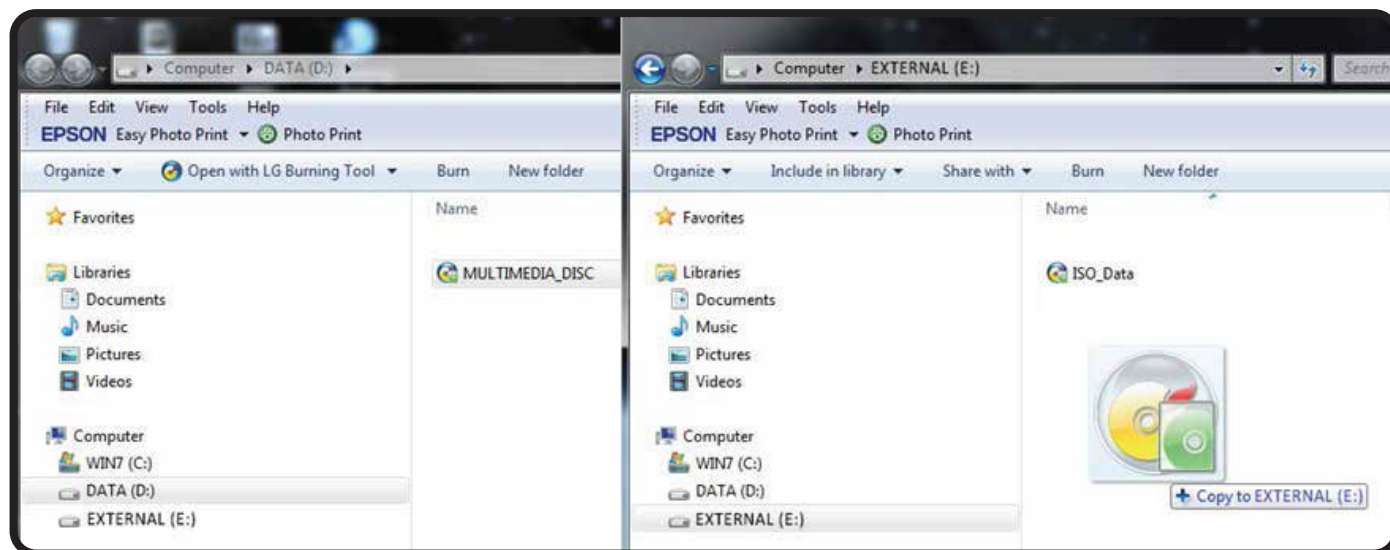
2

Turn on the PC Link ISO duplicator machine which has USB connection to built-in HDD. There is a switch located on the back of duplicator. Please turn the USB switch ON, and connect the duplicator to your computer USB port with a USB cable. The computer will see the duplicator’s HDD and install it automatically as an external hard disk drive.



3

Drag the ISO file that you created on computer and drop it to the duplicator's HDD.



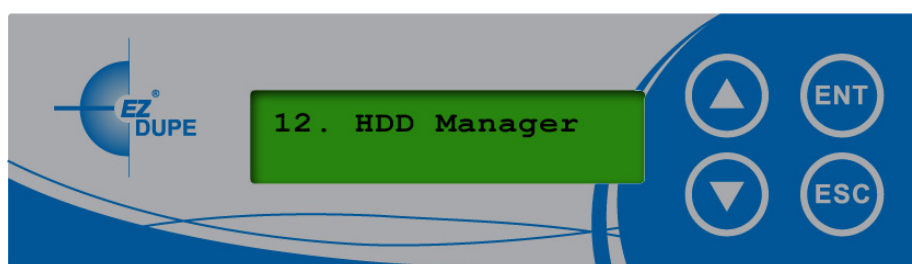
4

After the ISO file is transferred to the duplicator's HDD, please turn the USB switch OFF and reboot the duplicator.



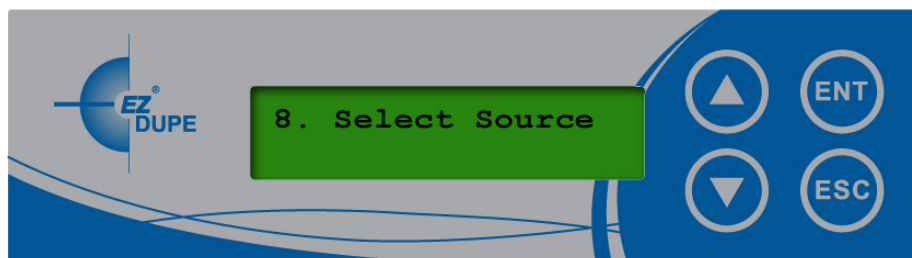
5

Now you should be able to see the ISO file on duplicator's HDD. Go to function "12. HDD Manager" on the duplicator menu and choose "Select Image" then you can see the ISO file that you have just transferred.



6

If you want to copy an ISO file from the HDD, go to function "8. Source Select" to select the ISO file as new source from the HDD.



7

Place blank media discs into the duplicator and start the copy process.

