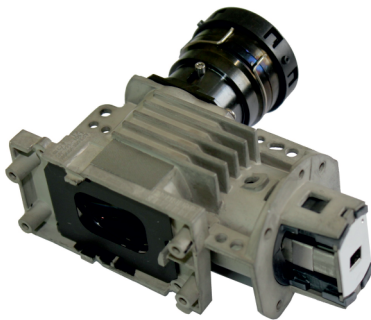


STAR CORE

Core Optics



STAR CORE is a compact optics designed for the TI DLP® chip up to 0.7" diameter, orthogonal pixel architecture, and 12° tilt angle. The DLP chip illumination is well homogenous thanks to an integrator rod that acts as a convenient light input port.*

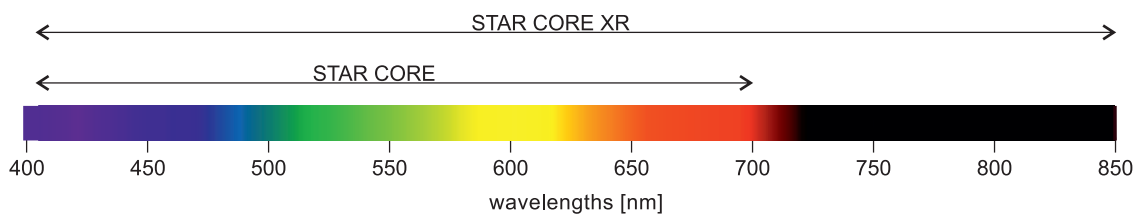
Different types of light sources can be adapted: lamps, LEDs, fiber bundles, lasers.

The STAR CORE optics offers leading edge performance in a small package and at affordable price. The rugged design proved reliable in industrial and medical environment for 3D measurement solutions, augmented reality, and intelligent lighting. Based upon the patented ZEISS design, the STAR CORE optics is produced by ViALUX in Germany.

STAR CORE can be used for both DLP7000 and DLP6500 DMD formats. Two mechanical interfaces are supported to mate Type A as well as s600 DMD packages. Due to the spring array mounting concept, Type A is the recommended package for applications that put high requirements on optical stability, e.g. in 3D metrology.

There are two models:

- a) STAR-07 CORE supporting the visible range 405 - 700 nm and
- b) STAR-07 CORE XR supporting the extend spectral range 405 - 850 nm



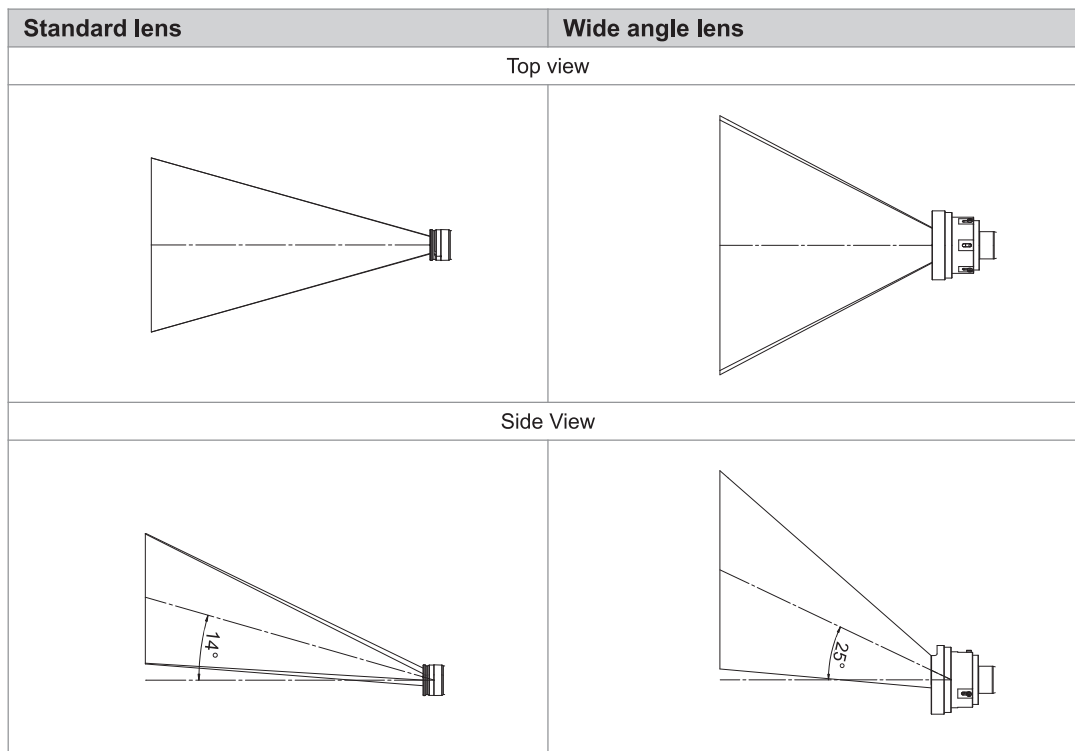
Specifications

	STAR CORE		STAR CORE XR
	Standard lens	Wide angle lens	Standard lens
Size	84 x 99 x 43 mm	136 x 108 x 81 mm	84 x 99 x 43 mm
Weight	215 g	672 g	215 g
Wavelength	405 - 700 nm	405 - 700 nm	405 - 850 nm
Supported DLP chip	DLP7000BFLP DLP6500 Typ A DLP6000 s600	DLP7000BFLP DLP6500 Typ A	DLP7000BFLP DLP6500 Typ A
Throw ratio	1.8 - 2.1	0.9	1.8 - 2.1
Zoom	1.00 - 1.16	none	1.00 - 1.16
Distortion	< 0.2%	< 5.5%	< 0.2%
Working distance	0.4 - 10 m	0.5 - 2 m	0.4 - 10 m
Offset	125%	125%	125%
Homogeneity	+25% / -30% (IEC)	+25% / -30% (IEC)	+25% / -30% (IEC)

*DLP is a registered trademark of Texas Instruments.



Lens shift



Ordering information

Optics	Supported DMD (Texas Instruments part number)	ViALUX part number
STAR-07 CORE	0.7" XGA (DLP7000BFLP)	O-0002
STAR-07 CORE XR	0.7" XGA (DLP7000BFLP)	O-0099
STAR-065 CORE Type A	0.65" 1080p Type A (DLP6500BFLQ)	O-0002
STAR-065 CORE s600	0.65" 1080p s600 (DLP6500BFYE)	9560

