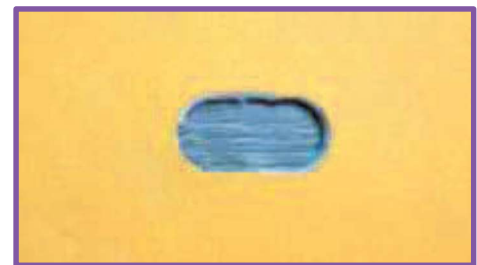
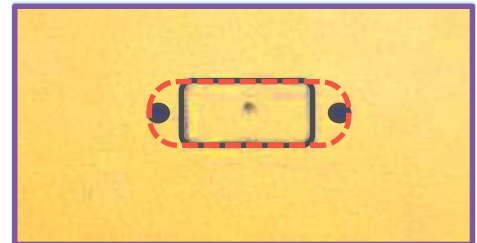
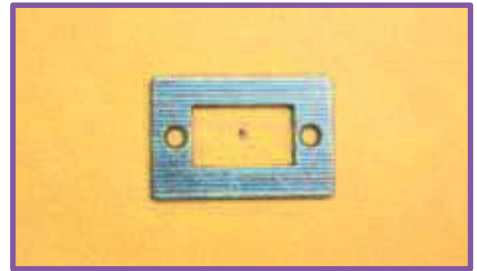


## ADD THE "FEMALE" SIDE OF THE TURN-LOCK:

1. On the front EXTERIOR of the bag center the plate over the turn-lock mark made from the pattern piece. **Take time to make sure your plate is straight in relation to the top edge of the bag. (Using the quilting ruler is helpful).**
2. Draw around the center opening of the plate and mark the screw hole placement. This gives you an idea of where to cut, but the red dotted line shows how much actually needs to be removed for this particular turn-lock. *Note: You will cut around the screw hole marks as you will need to remove that area of fabric for most turn-locks. Follow the manufacturer's instructions for best results.*
3. Cut away the area with sharp scissors, or leather punch, but make sure you *only* cut away the amount needed. You will be cutting through the EXTERIOR fabric as well as the LINING so make sure the LINING is pressed flat against the EXTERIOR front. **DO NOT CUT THE BACK SIDE OF THE BAG.** *Note: If you are using a leather punch with a hammer, place something inside the bag behind the cutting area, like a piece of wood, prior to hammering the leather punch piece.*
4. Place the front piece of the plate in the hole, from the front of the bag. The screw holes should be facing toward the LINING of the bag. Check from the front to make sure the plate is straight.
5. Lay the back part of the metal plate on top, LINING up the holes. Place a small drop of glue in the holes and install the screws. **YOU'RE ALL DONE!**



**ADVANCED NOTE:** See page 22 For adding the STRAP to the STRAP CONNECTORS.