

The Cici Tote Add-ons

Make a more casual beach bag or add more pockets to the classy tote bag

Skill Level: Confident Beginner

Instructions follow for these changes and/or additions to [The Cici Tote Bag Pattern](#):

- Use different exterior fabric – outdoor canvas, waterproof canvas, or similar
- Replace vinyl, cork, or leather for a contrasting canvas or similar, to make bag more suitable for a beach bag
- Add two exterior slip pockets between the straps
- Modify overlay to eliminate curve
- Create continuous strap that eliminates hardware
- Change the interior zipper pocket to include 4 card slots
- Change the interior slip pocket to a larger size and more sections
- Add a segmented elastic top pocket
- Add a swivel clasp for holding keys

Fabric and Interfacing Changes:

- Increase exterior fabric from ½” yard up to 1 yard depending on direction, fussy cut, etc.
- “Contrast Fabric” replaces vinyl, cork, or leather pieces – use canvas, waterproof canvas, or similar
- Increase lining fabric to 1 yard
- Increase interfacing (SF101 or similar) to 4 yards. If using waterproof canvas omit the SF101.
- Add fleece interfacing of 24” x 18” for body. If using waterproof canvas, may not need, but bag will be slouchy.
- Add 808/809 or similar for card slot pocket 11” x 15” (you can use 2 layers of SF101 if preferred)
- Decrease Peltex needed to 12” x 4” for bottom and (4) at 2” x 2” strap reinforcement **only – not on chart**

Notions Changes:

- Add one ½” swivel clasp for the key holder
- Add 16” piece of 3/8” elastic
- Eliminate all hardware except the two zippers

NOTES:

WS = Wrong Side of fabric

WST = Wrong Sides Together

RS = Right Side of fabric

RST = Right Sides Together

SA = Seam Allowance

All seam allowances are ½” unless otherwise specified. Pattern measurements include seam allowance.

READ ALL INSTRUCTIONS CAREFULLY BEFORE YOU BEGIN!!!!

Fabric and Interfacing Cut List Changes:

No new pattern pieces to print. Measurements are only provided for pieces that are changed from the original pattern. *Follow the measurements on the chart for new/altered pieces.*

(all measurements are W x H)

Ck	Pattern Piece	Exterior Fabric	Lining Fabric	Contrast Fabric	SF101 or similar	Fusible Fleece	808/809
	Exterior Body @ 18" x 12"					2	
	Overlay, eliminating top curve @ 18" x 7½"			2	2		
	Straps @ 4" x 41" (or preferred length)			2	2*		
	Exterior Slip Pockets @ 7" x 13"	2			2**		
	Zipper Pocket w/Card Slots @ 11" x 15" Large		1				1***
	Lining Slip Pocket @ 18" x 12½"		1		1		
	Lining Slip Pocket Trim @ 18" x 2"			1			
	Elastic Top Pocket @ 23" x 12" (no interfacing!)		1				
	Key Holder @ 1" x 3" Fabric of Choice – Cut One						

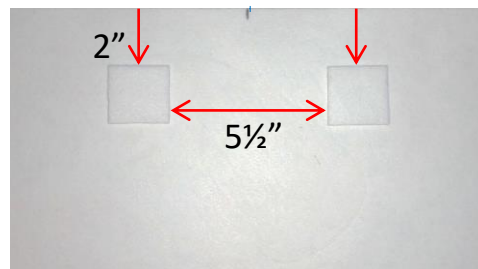
*Cut at 2" x 41" (or preferred length) and fuse to the center of the strap.

**Only needed if using quilting cotton or similar lightweight fabric.

***Or 2 layers of SF101

ADDING THE BODY INTERFACING AND STRAP STABILIZER:

- Fuse the fleece to the WS of the EXTERIOR BODY pieces. Unlike the exterior stabilizer in the original pattern, the fleece will go to the edges, and will not be kept out of the SA. Find the center of the EXTERIOR BODY and mark the top and bottom. Measure down 2" from the top and 2¾" over from the center mark and fuse the 2" x 2" pieces of Peltex. Repeat on the other side.



PREPARING THE STRAPS:

- The STRAPS are folded in half and pressed and then unfolded. Fold each long end toward the center crease and press. Then fold in half again. You will have two straps measuring 1" x 41". From each raw end measure in 7¾" and make a mark. Stitch between the 2 marks with an 1/8" topstitch from either edge. *The remaining sections on the ends will be top-stitched when attached to the bag.*

Exterior Changes – Straps, Slip Pockets, and Overlay:

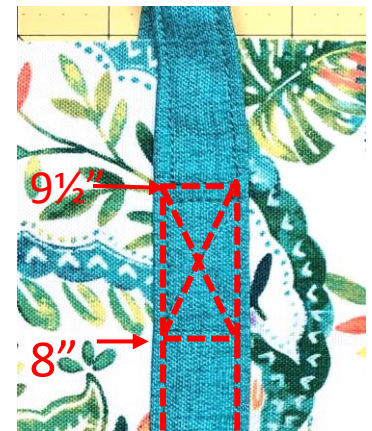
Slip Pockets:

- Fold each EXTERIOR SLIP POCKET in half WST to make a 7"W x 6½"H" pocket. Press. Center the pocket 3" down from the top of one EXTERIOR BODY. Pin in place and baste sides at ¼".



Straps:

- Position your STRAP on either side of the SLIP POCKET with the raw ends aligned with the bottom of the pocket. They should be 6" apart and overlapping the pocket sides ½", pin in place. *Make sure your strap isn't twisted.*
- Measure 8" up from the bottom of the EXTERIOR BODY and mark. Top-stitch from the bottom edge, make 1½" box and then stitch an "X" inside. Top-stitch ONLY up to and around the box and the "X", and back down to the bottom. Repeat with the other side of the strap.
- Add the pocket and strap on the remaining EXTERIOR BODY piece.



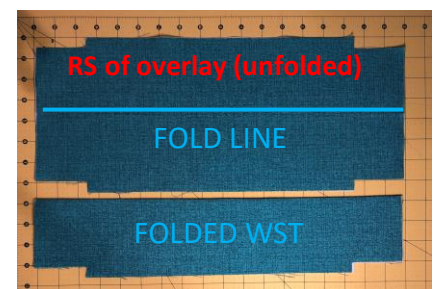
Overlay:

- Use the OVERLAY pattern piece and trim off the curve (or fold back) to make a straight edge. Lay the now straight top edge on the fold of the contrast fabric. Open and interface as instructed.



- Take the interfaced OVERLAY and fold WST. Press the fold. The overlay now measures 18" x 3¾".

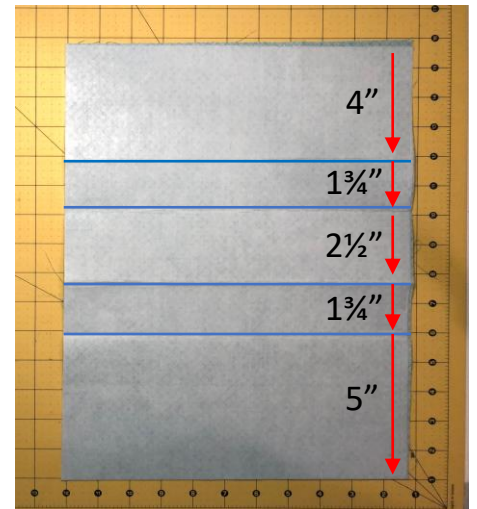
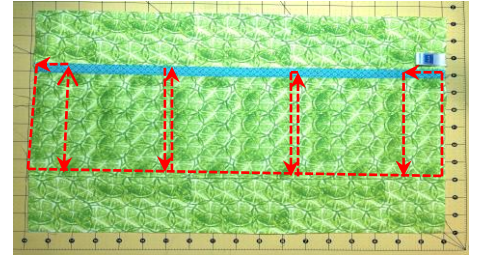
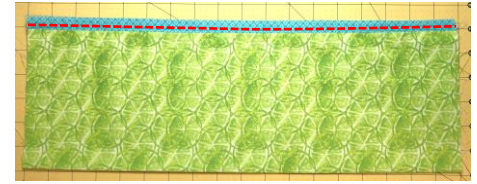
Follow The Cici Tote Bag instructions to add the OVERLAY and assemble the exterior.



Interior Changes – Slip Pocket and Card Slots for Zipper Pocket

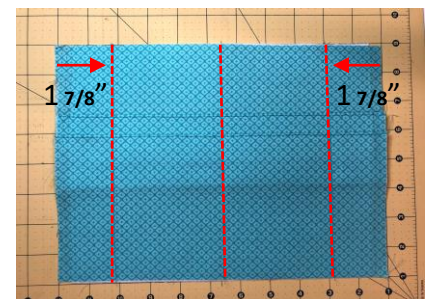
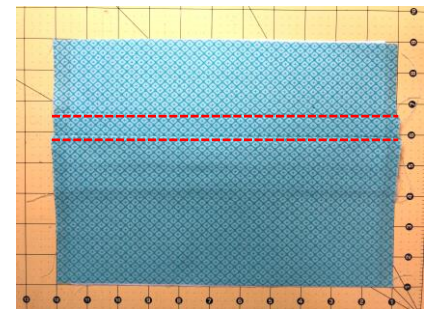
Slip Pocket:

- Fold the SLIP POCKET in half RST on the long edge. Stitch the long raw edges, turn RS out and press. *No photo.* Add the SLIP POCKET TRIM now if desired. If not using trim, top-stitch the edge at $\frac{1}{4}$ ".
- Lay one LINING BOTTOM RS up. Lay the slip pocket with folded or trimmed edge at the top 3" below the top edge, aligning the short edges with the LINING BOTTOM sides. Mark $1\frac{1}{2}$ " from each raw edge. Within the remaining 15", determine sections desired and mark for vertical lines. Top-stitch at $\frac{1}{8}$ " across the bottom edge and baste the sides at $\frac{1}{4}$ ". Starting at upper right corner, top-stitch to $1\frac{1}{2}$ " mark, pivot and stitch across bottom edge to the next divider mark. Pivot, stitch to the top, make one stitch, pivot and stitch down to the bottom. Continue across pocket. *See stitch diagram on picture.*



Zipper Pocket:

- Take the ZIPPER POCKET CARD SLOT and lay WS down. Mark the fold lines as shown for the card slots on the WS.
- Fold on the lines and press each fold in place. The card slot piece should measure 11" x 8" after folded. *This will be your "LARGE" zipper pocket piece referred to in the Cici Tote Bag pattern.*
- Top-stitch the two folded edges, folding rest of the piece out of the way so you are only stitching the fold.
- Measure in $1\frac{7}{8}$ " from each short side and mark. Mark the center. Top-stitch vertical lines at all 3 marks, backstitching at each fold, creating 4 card slots.



Using the card slot piece as the Large Zipper Pocket, assemble the zipper pocket as instructed in The Cici Tote Bag pattern.

Interior Changes – Key Holder and Elastic Top Pocket

Key Holder:

- Prepare the key holder piece by folding the long sides into the center and pressing and then stitch the long edges. Loop through the swivel hook and baste the ends together. Position the strap in line with the upper raw edge of the LINING BOTTOM to the left or right of the zipper pocket wherever desired. Baste in place. This will be secured in the seam once the ZIPPER PLACKET is attached.



Elastic Top Pocket:

- Fold the ELASTIC TOP POCKET in half RST on the long edge. Sew the long raw edges, turn RS out, and press.
- Top-stitch $\frac{1}{2}$ " below the folded edge, making an elastic casing. Insert elastic using a safety pin at one end to work through. Determine how much gathering is desired and trim elastic if needed. Baste elastic at each end to secure.
- Fold the zipper pocket snugly out of the way and clip (as shown) before pinning the elasticized pocket. Be sure to check the back.



- Fold under each short raw edge $\frac{1}{4}$ " and pin to hold.
- With the Lining Bottom containing the Zipper Pocket RS up, position the ELASTIC TOP POCKET 4" from the top edge, and place the sides of the pockets 2" in from each side. Pin in place and stitch the folded short edges at $\frac{1}{8}$ " and $\frac{3}{8}$ " so the raw edge is enclosed.
- Make sure the gathers are spread evenly. Make $\frac{1}{2}$ " pleated tucks to take in the extra fabric from the gathers. In the picture, there are four sets of pleats, but do what works for your chosen pocket sections. Pin and stitch along the bottom edge.
- Determine the pocket sizes needed and stitch from the top edge to the bottom to create separate pockets. The picture shows 2 small outer pockets, perfect for a tube of lotion, and 2 larger inner pockets.



Follow the instructions on [The Cici Tote Bag](#) pattern to finish assembling the lining and remainder of the bag.

Finish your Cici Tote Beach Bag and share on the Kaya Papaya Design [Facebook Pattern Group](#).