



# BMW F Chassis Paddle Shifters Installation Instructions

**Disclaimer: This guide is meant to be used as a reference and Carbonex is not responsible for any damage and harm to the steering wheel and its components, vehicle, or the people involved during the installation process. In addition, different vehicle options, build year, and model have different components and certain steps could be different.**

## Tools required

- Flat head screwdriver
- T-15 torx screwdriver
- T-20 torx screwdriver
- 10mm socket
- Trim tools

## Instructions

1. Disconnect the battery's negative terminal with the 10mm socket. The battery is in the trunk located either near the passenger tail light or underneath the trunk liner depending on the vehicle model.



**Note: do not close the trunk while the battery is disconnected**

2. Loosen the airbag. At the 4 and 8 o'clock position of the steering wheel are two holes. Start on one side by inserting the flat head screwdriver and press in on the spring loaded retaining clip. Once the clip is fully compressed, pull gently on the same side of the air bag and you should feel it come loose from the retaining clip.



The image below is the internal structure behind the airbag (you won't see this until the airbag is removed). The screwdriver is pressing on the silver retaining clip indicated by the red arrow. Once compressed, the retaining clip at the red circle area will be fully compressed and out of the way, letting the airbag come free



3. Once the airbag is loose, carefully disconnect the airbag connector to the steering column and set aside the airbag in a safe place.





4. Starting on the left side, use the T-20 torx screwdriver to remove the screw securing the paddle shifters. Once done, do the same for the paddle shifter on the right side.



5. The photos from this step onwards have the paddle shifter removed to better illustrate the replacement process but the paddle shifter module does not need to be removed to replace the paddle shifters. Start on one side, pull the paddle shifters back (away from the steering wheel) and you should be able to see the pin securing the top and bottom halves of the paddle shifter module.

Thinner tip



Thicker tip



6. Take something pointy and poke the thinner tip side to release the pin

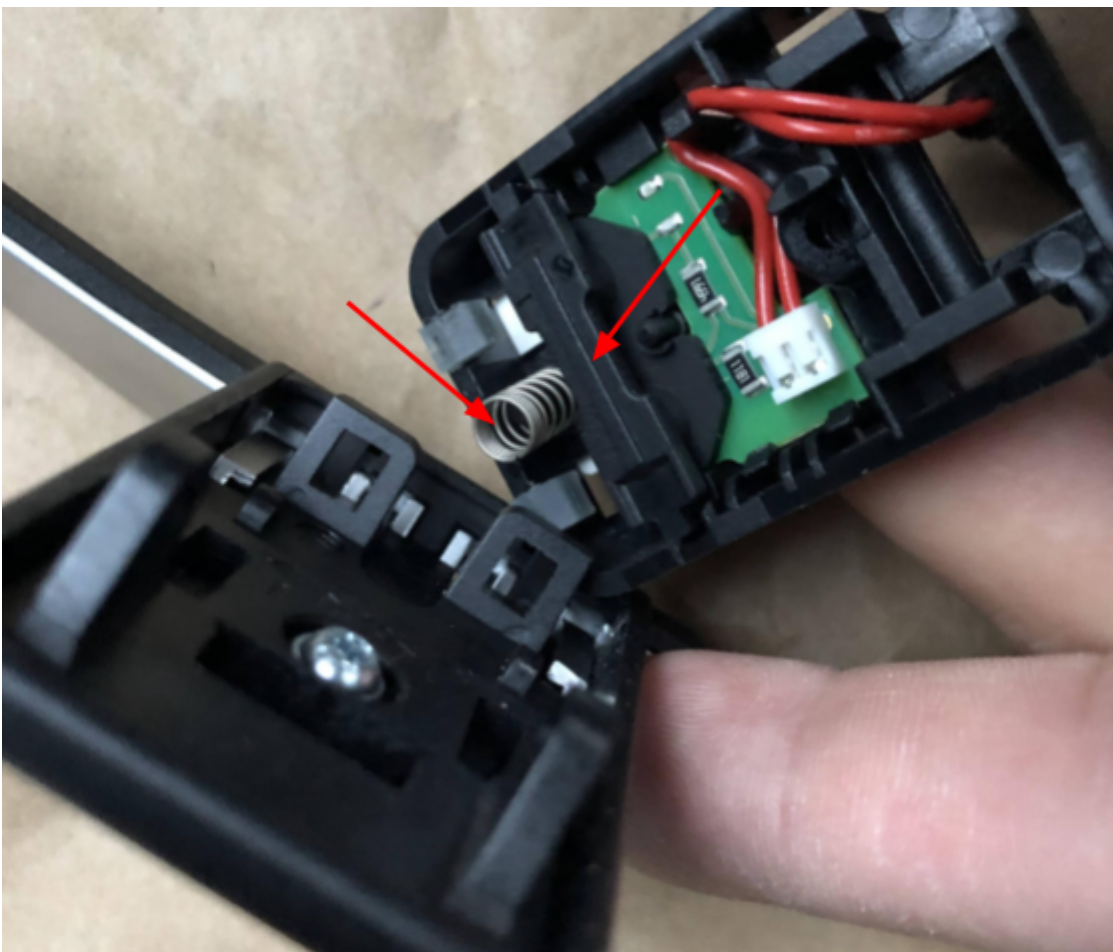


7. Remove the pin and orient the paddle shifters in such a way that the back of the paddle shifters is facing upward (parallel to the roof of the vehicle). This is to ensure when disassembling the paddle shifter module, the internal components don't fall out as you don't want to lose them.





- Carefully lift the paddle shifters on the side where the pin was removed and slide the paddle shifters off the latches to remove completely. Be very careful to not lose the spring and the plastic "bridge" piece marked in the second image.

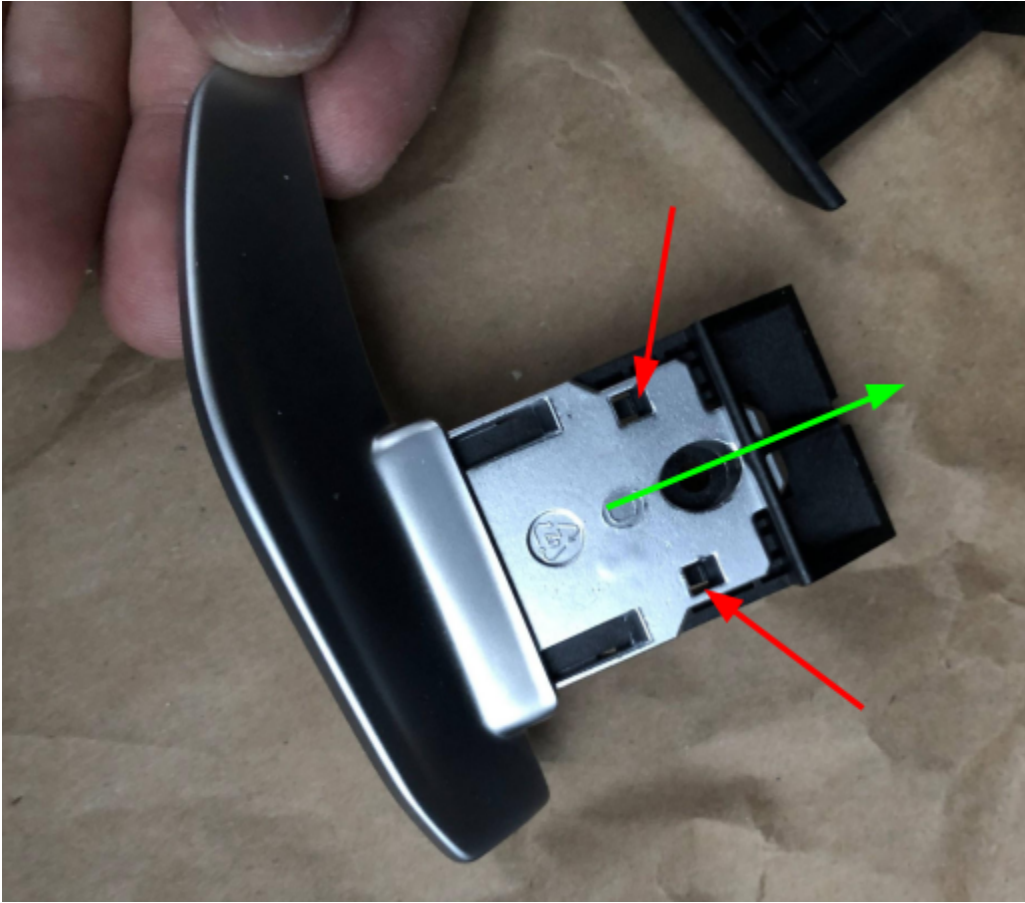




9. Remove the T-15 torx screw securing the paddle shifters to the plastic back housing



10. Turn the paddle shifter on to its back side, there are two plastic latches indicated by the red arrow. Press down on the latches gently so they are not latching onto the paddle shifter and slide out the black plastic bracket in the direction of the green arrow.



11. You should now have all the components disassembled and ready to transfer the plastic bracket and the back housing to the new paddle shifters.



12. Install the plastic bracket onto the new paddle shifters and secure the plastic back housing with the T-15 torx screw.





13. Reinstall the new paddle shifters back onto the paddle shifter module, reinsert the pin to secure in place.



14. Repeat **Step 5 to Step 13** for the other paddle shifter
15. Secure the left and right paddle shifters back to the steering wheel with the T-20 torx screws. The screw holes on the paddle shifter modules are plastic so be extra careful in ensuring the screw holes are properly lined up with the steering wheel's screw hole to avoid cross threading them.
16. Reconnect the airbag connector to the steering column (step 3).
17. Reinstall the airbag, please ensure the airbag is properly clipped into the springs on both sides (when the spring latches onto the airbag, you will hear a clicking sound).
18. Reconnect the battery and tighten the 10mm nut.
19. Enjoy the enhanced look and feel of the new Carbonex extended paddle shifters!