

Retractable Clothes Line

KCT

GLS131/132/141/142

Parts Included:

GLS131	2 screws + 1 hook
GLS132	2 screws + 2 hooks
GLS141	2 screws + 1 hook
GLS142	2 screws + 2 hooks

Imported by:
KCT Leisure
Glebe Farm, Old London Road,
Copdock,
Ipswich, Suffolk,
IP83JN,
United Kingdom

Assembly

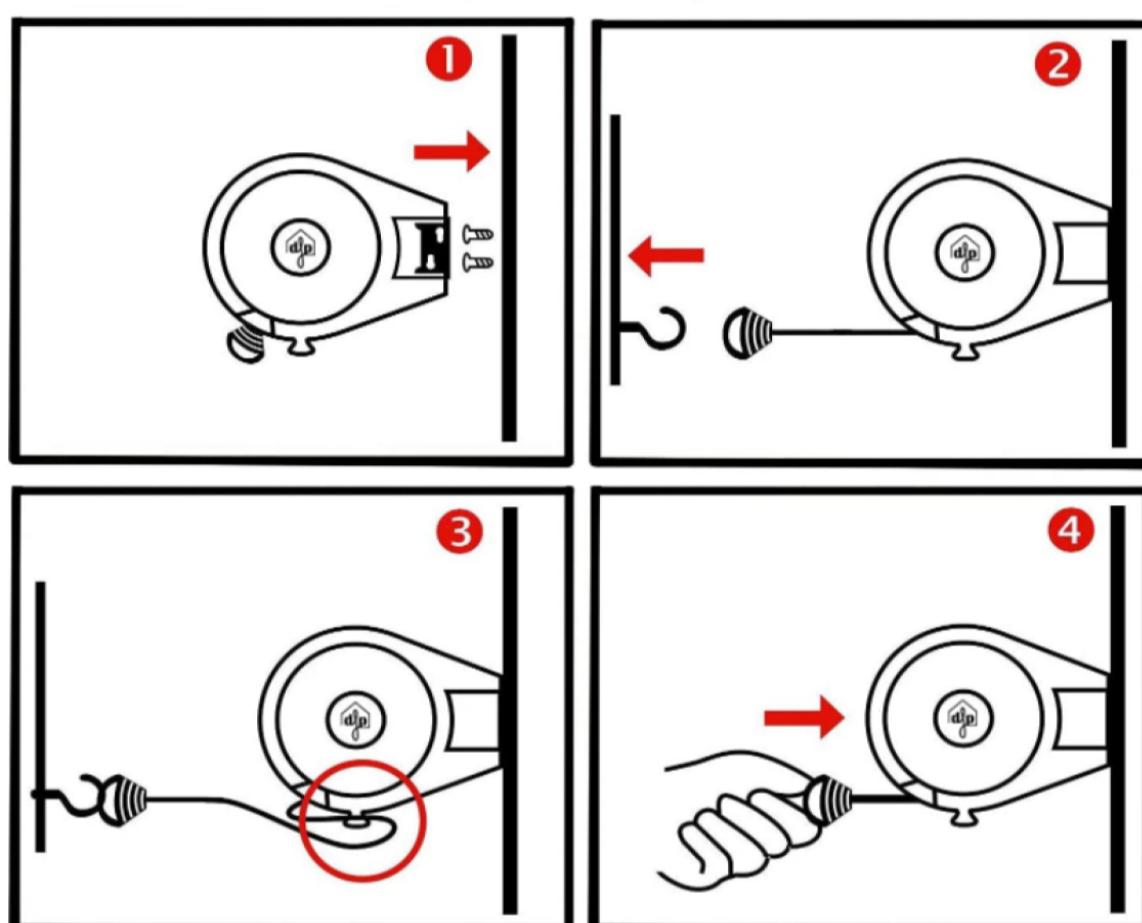
1. Mark the primary wall where you want to install the clothes line. Make sure this is above head height. Then screw into the wall and secure.

2. Install the hook(s) onto the opposite wall, or wherever you wish the line to cross to.

3. Pull the line from the main unit to and attach onto the hook opposite. Make sure to lock the line in place using the line holder at the base of the unit.

4. Remember to retract the line when not in use to avoid injury.

SIMPLE INSTALLATION



Max Weights:

26/30m Lines - Up to 30KG

15/12m Lines - 10-15KG

Caution!

- The retractable clothes line is not a childrens toy. Be aware, children can get caught in the lines!
- Ensure that the clothes line is installed above head height.
- When not in use, always retract the clothes line.
- For outdoor use only!