

## Rusty's Winch Mount – 2014+ JK Hard Rock Bumper RR-WM40-JKHR INSTALLATION INSTRUCTIONS

Last Revised: 2/1/2017

### Introduction:

Rusty's recommends that this installation be performed by a certified automotive technician or a person with professional mechanical knowledge. Installing this kit without this expertise may jeopardize the handling and safety of the vehicle.

Read instructions several times before starting. Be sure you have all the needed parts and know where they install. Read each step completely as you go. Exhaust modifications may be necessary. Prior to drilling or cutting, check behind the surface being worked on for any wires, lines, or hoses that could be damaged. After any drilling or cutting, remove burrs and grind smooth any surfaces. An inclinometer or similar tool may be needed to measure driveshaft angles before and after the installation.

### Warning:

- It is the owners' responsibility to inspect all Rusty's products for proper torque specs to prevent loosening of components.
- Seat belts and shoulder harnesses should be worn at all times.
- Re-check all bolts and nuts after the first 100 miles and after any off-road usage during the first 300 miles.
- Although all of our products are made from the highest quality materials possible, they are not a substitute for Safe and Careful driving. In other words, have good safe on-road / off-road sense. Know the terrain, the speed limitations, and any obstacles that may lie ahead. Please remember to preserve our right to enjoy public land through the proper use of off-road vehicles.

### Before Starting Installation:

1. Carefully Read all warnings and instructions completely before beginning.
2. Verify all parts have been received in this kit by checking the parts list on page#2 of this document.
3. Only install this kit on the vehicle for which it is specified.
4. Park the vehicle on a clean, dry, flat, level surface and block the tires so the vehicle cannot roll in either direction.
5. Be certain the vehicle is safely secured on jack stands or a vehicle lift prior to working around or under a vehicle. Never rely on a jack alone to support a vehicle's weight; use appropriately rated stands to support the vehicle's frame and any other heavy components.

**Parts List:**

**Note:** Please be sure that you have all the provided parts listed below before continuing with the installation.

<b>Part #</b>	<b>DESCRIPTION:</b>	<b>Quantity</b>
RR-WM40-JKHR	Winch Mount 2014+ JK Hardrock Bumper	1
RR-WM40-JKHR-FCP	2014+ JK Hardrock Fairlead Cover Plate	1
RC-VCRB-JK	JK Vacuum Canister Relocation Bracket	1
67443689	M6 x 1.00mm x 40mm Length Hex Head Cap Screw	2
67492967	M6 x 12mm O.D. Flat Washer	2
67485920	M6 x 1.00mm Grade 8 Hex Lock Nut	2
87915369	1/2"-13 x 1" Length Grade 8 Hex Head Cap Screw	2
87915179	3/8"-16 x 1" Length Grade 8 Hex Head Cap Screw	2
67746685	1/2" SAE Flat Washer	4
67746602	3/8" x 13/32" O.D. SAE Flat Washer	4
87922076	1/2"-13 Grade 8 Hex Lock Nut	2
87922050	3/8" - 16 Grade 8 Hex Lock Nut	2
67426049	7/16"-14 x 1-1/2" Length Grade 8 Hex Head Cap Screw	2
05724638	7/16" SAE Flat Washer	2
RC-716-TN	7/16" Tab Nut	2

**Front Installation Instructions**

1. Remove the 8 torx bolts on the top counter of the bumper. Retain the hardware and remove the steel access panel. Remove the front plastic badge by removing the steel clips or by compressing the plastic pins; this varies by year models. Remove and discard the badge. Disconnect the wiring from the fog lights and temporarily tuck the ends out of the way (this will avoid to cut wire retaining ties and is easier to re-connect). With the help of an assistant, remove the bumper-to-frame mounting bolts. There will be 4 per side. Save all hardware for reuse. Pull the bumper slightly forward and angle it downward about 45 degrees. We recommend using jack stands to rest the bumper at each end. Use rags or cardboard to protect the bumper finish.



For Questions or Suggestions, contact our Tech Department (256-442-0607)

### Front Installation Instructions (Continued)

2. Locate to the vacuum canister on the inside of the driver side frame rail. In most installs this will be re-located.

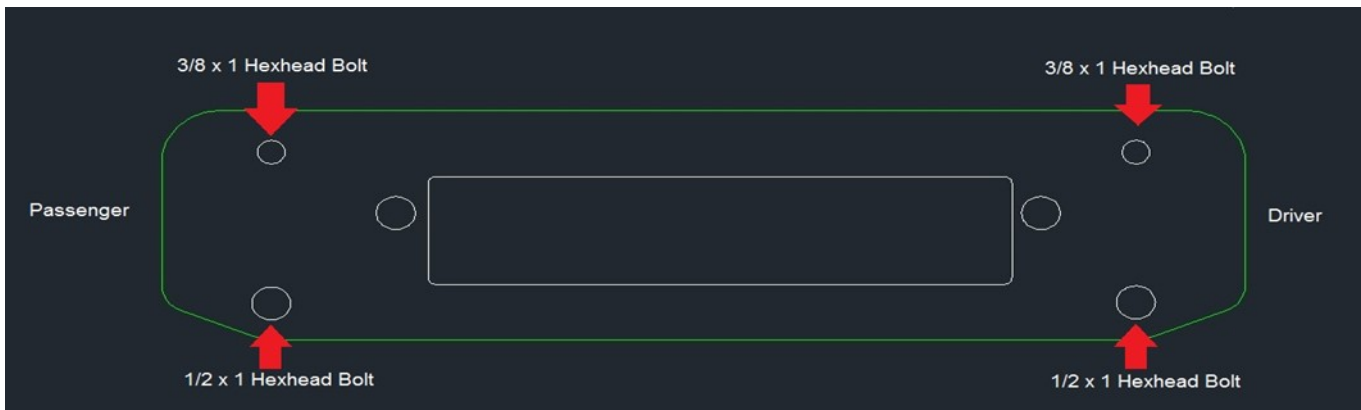
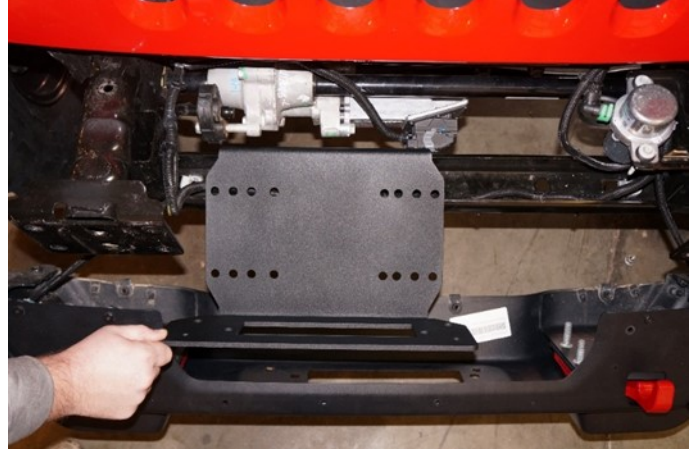


3. Locate the vacuum canister on the inside of the driver side, frame rail and remove the two mounting bolts. Now place the vacuum canister to the outside of the driver's side frame rail.
4. Cut the vacuum canister bracket as shown in the picture below. Once cut, paint the area to prevent rust.
5. Locate the vacuum canister bracket to the driver side outside bumper mounting points. The bracket will bend toward the rear of the jeep. When it is time to bolt the bumper back in place, place the washers and nuts on the bumper mounting points and fully tighten. The vacuum canister will be brought to the outside of the frame rail. Locate it to the new bracket. Using the supplied hardware (6mm x 1.25) fully tighten.

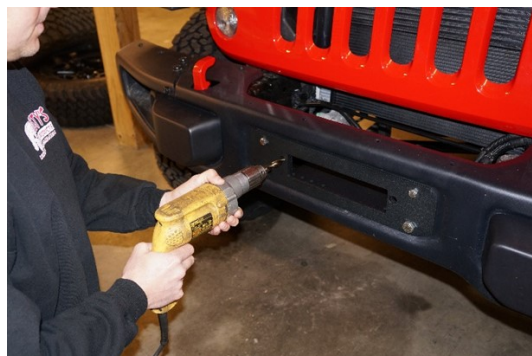


### Front Installation Instructions (Continued)

6. Locate the winch bracket in the bumper opening as shown, angling the front face downward, hooking the rear bend of the bracket around and below the crash bar. NOTE: If the JK is a Rubicon this will be easier done on the passenger side, then once placed sliding the winch bracket to the center.



7. Align the winch bracket to the most outward 4 bolt pattern in the bumper. NOTE: There will be an existing hole in the bumper on the driver side between the upper hole and lower hole that will NOT be used).
8. Locate the front fairlead cover the most outward 4 bolt pattern, and install the hardware shown.



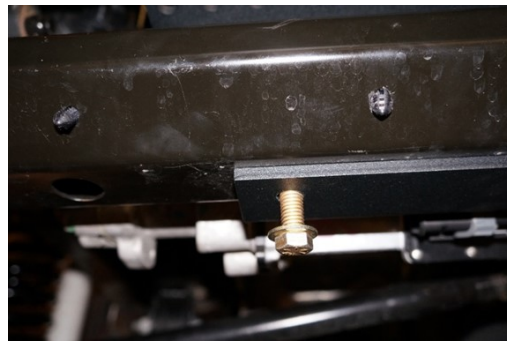
For Questions or Suggestions, contact our Tech Department (256-442-0607)

### Front Installation Instructions (Continued)

9. With the front fairlead cover bolts installed and tightened, locate to the passenger side fairlead cover hole. Using the fairlead cover plate as the template, drill through the bumper using a  $\frac{1}{2}$ " drill bit. Clear and deburr the hole after drilling.
10. Reinstall the bumper on the frame rails using the factory hardware. Be sure to include the vacuum canister bracket that was prepped earlier. Tighten the hardware to factory specifications.



11. Locate to the 2 mounting points of the winch plate at the crash bar. Using the winch plate as a template, drill the 2 mounting points in the crash bar to  $31/64$ ". Clean and deburr the holes after drilling.



12. Insert the supplied  $7/16$ " tab nuts in the open channel of the crash bar and align them with the holes just drilled. Install the supplied  $7/16$ " x  $1-1/2$ " bolts in the drilled holes and start them in the tab nuts. Tighten.
13. Double-check all fasteners for proper torque. Install the winch per the instructions supplied with the winch.



Rusty's Off-Road Products  
7161 Steele Station Road  
Rainbow City, AL 35906  
1-256-442-0607  
[www.rustysoffroad.com](http://www.rustysoffroad.com)



## WARNING

It is the owners' responsibility to inspect all Rusty's products for proper torque specs to prevent loosening of components. Seat belts and shoulder harnesses should be worn at all times. Re-check all bolts and nuts after the first 300 miles and after any off-road usage during the first 300 miles. Although all of our products are made from the highest quality materials possible, they are not a substitute for Safe and Careful driving. In other words, have good safe on-road / off-road sense. Know the terrain, the speed limitations, and any obstacles that may lie ahead. Please remember to preserve our right to enjoy public land through the proper use of off-road vehicles. Thank you for choosing Rusty's Off Road Products.



For Questions or Suggestions, contact our Tech Department (256-442-0607)