

Rusty's JL/JT Forged Adjustable Sway Bar Quick Disconnects RCSB540JLJT INSTALLATION INSTRUCTIONS

Last Revised: 8/2/2022

Introduction:

Rusty's recommends that this installation be performed by a certified automotive technician or a person with professional mechanical knowledge. Installing this kit without this expertise may jeopardize the handling and safety of the vehicle.

Read instructions several times before starting. Be sure you have all the needed parts and know where they install. Read each step completely as you go. Exhaust modifications may be necessary. Prior to drilling or cutting, check behind the surface being worked on for any wires, lines, or hoses that could be damaged. After any drilling or cutting, remove burrs and grind smooth any surfaces. An inclinometer or similar tool may be needed to measure driveshaft angles before and after the installation.

Warning:

- It is the owners' responsibility to inspect all Rusty's products for proper torque specs to prevent loosening of components.
- Seat belts and shoulder harnesses should be worn at all times.
- Re-check all bolts and nuts after the first 100 miles and after any off-road usage during the first 300 miles.
- Although all of our products are made from the highest quality materials possible, they are not a substitute for Safe and Careful driving. In other words, have good safe on-road / off-road sense. Know the terrain, the speed limitations, and any obstacles that may lie ahead. Please remember to preserve our right to enjoy public land through the proper use of off-road vehicles.

Before Starting Installation:

1. Carefully Read all warnings and instructions completely before beginning.
2. Verify all parts have been received in this kit by checking the parts list on page#2 of this document.
3. Only install this kit on the vehicle for which it is specified.
4. Park the vehicle on a clean, dry, flat, level surface and block the tires so the vehicle cannot roll in either direction.
5. Be certain the vehicle is safely secured on jack stands or a vehicle lift prior to working around or under a vehicle. Never rely on a jack alone to support a vehicle's weight; use appropriately rated stands to support the vehicle's frame and any other heavy components.

Hardware:

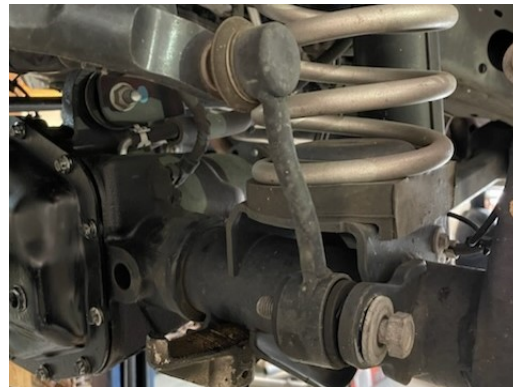
Note: Please be sure that you have all the provided parts listed below before continuing with the installation.

Part #	DESCRIPTION:	Quantity
RCSB540JLJT	JL/JT Adjustable Quick Disconnect Sway Bar Links	2
RC-SB500-BP	Quick Disconnect Bullet Pin and Lock Nut	4
RC-SB500-RC	Quick Disconnect Retaining Clip	4
540SMB-DS	Driver Side JL/JT Sway Bar Mount	1
540SMB-PS	Passenger Side JL/JT Sway Bar Mount	1
540RET-DS	Driver Side JL/JT Retention Bracket	1
540RET-PS	Passenger Side JL/JT Retention Bracket	1
N/A	1" OD x 1.225" Spacer	1
MC-4510N104	Black Neoprene 3/4" ID x 1.37" OD Damping Washer	4
05728209	1/2"-13 x 2" Length Grade 8 Hex Head Cap Screw	1
05728357	1/2"-13 x 3-1/2" Length Grade 8 Hex Head Cap Screw	1
02994929	1/2" SAE Flat Washer	4
67488965	1/2"-13 Grade 8 Hex Lock Nut	2
67746685	1/2" SAE Flat Washer (Silver)	2
74454422	5/16"-18 x 1-1/4" Length Grade 8 Hex Head Cap Screw	2
67488924	5/16" - 18 Grade 8 Hex Lock Nut	2

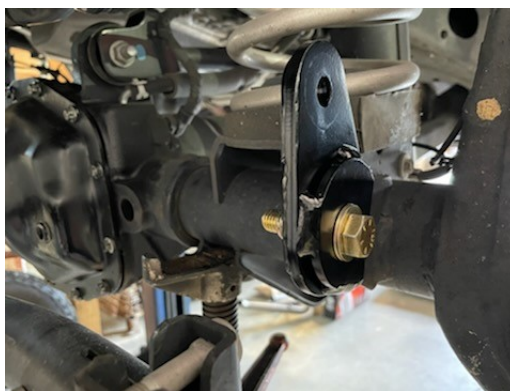
Installation Instructions

Note: Save all factory components and hardware for reuse, unless noted.

1. Before beginning the installation make sure the vehicle is parked on a level surface at ride height.
2. Remove the factory sway bar links at the axle and the sway bar. The factory hardware and links will not be reused.

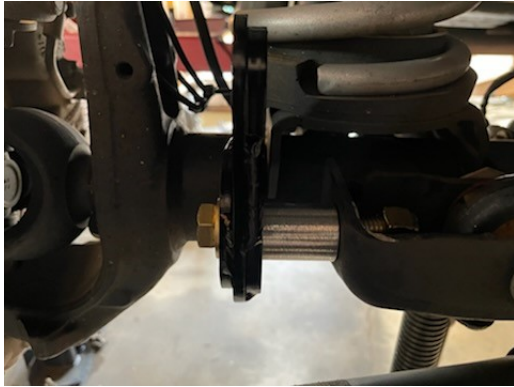


3. Locate the supplied driver's side relocation bracket (Note: It will have a larger inside slotted opening) and slide it over the factory sway bar axle tab location and install the supplied 1/2"-13 x 2" Length Grade 8 Hex Head Cap Screw, 1/2" SAE Flat Washer, and 1/2"-13 Grade 8 Hex Lock Nut as illustrated in the image below. Fully tighten hardware at this time.



Installation Instructions (Continued)

4. Locate the supplied passenger's side relocation bracket (Note: It will have a smaller inside slotted opening) and slide it over the factory sway bar axle tab location. Position the supplied 1" OD x 1.225" Spacer between the relocation bracket and the track bar mount. Install the supplied 1/2"-13 x 3-1/2" Length Grade 8 Hex Head Cap Screw, 1/2" SAE Flat Washer, and 1/2"-13 Grade 8 Hex Lock Nut as illustrated in the image below. Fully tighten hardware at this time.



5. Install the supplied Quick Disconnect Bullet Pin and Lock Nut on both the passenger and driver side sway bar relocation brackets as shown in the image below. The bullet pins on each of the relocation brackets will point to the center of the vehicle. (**Note:** Make sure that the retaining clip hole is vertical when tightening the hardware.) Once tightened install the supplied Black Neoprene 3/4" ID x 1.37" OD Damping Washer on each pin.



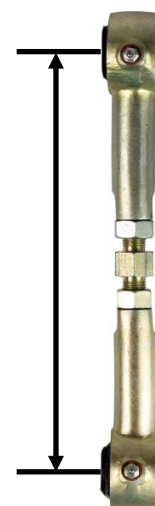
Installation Instructions (Continued)

6. Install the supplied Quick Disconnect Bullet Pin and Lock Nut on both the passenger and driver side sway bar as shown in the images below. The bullet pins on each of the relocation brackets will point outward towards the tire of the vehicle. (**Note:** Make sure that the retaining clip hole is vertical when tightening the hardware.) Once tightened install the supplied Black Neoprene 3/4" ID x 1.37" OD Damping Washer on each pin.



7. Install the both the supplied Quick Disconnect Adjustable Links at this time and secure with the supplied Quick Disconnect Retaining Clips.
8. Adjust both Quick Disconnect Adjustable Links to the correct length at this time. Refer to the chart below for the correct length for your suspension lift height. Use the center nut to adjust to the proper length. Once each side is set to equal lengths, apply a drop of thread lock to the thread portion of the and tighten the jam nuts.

Lift Height	Length (Center to Center)
2" Lift	6.25" Center to Center
3" Lift	6.5" Center to Center
3.75" Lift	7" Center to Center

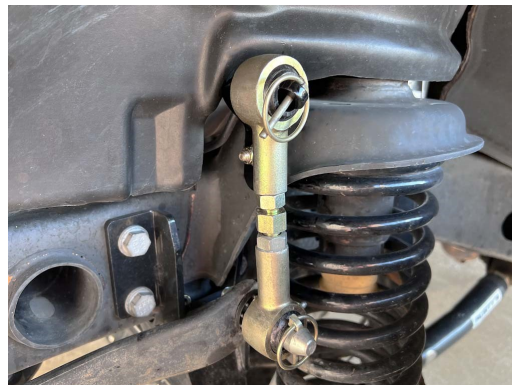


Installation Instructions (Continued)

6. Install the supplied Driver and Passenger Side Retention Brackets by mounting them to the front side of the factory upper coil spring brackets as pictured in the images below. (Reference images are of the driver side of vehicle.) There is a factory hole location that the retention brackets will attach using the supplied 5/16"-18 x 1-1/4" Length Grade 8 Hex Head Cap Screw and 5/16"-18 Grade 8 Hex Lock Nut. The 5/16"-18 x 1-1/4" Length Grade 8 Hex Head Cap Screw will need to be inserted from the inside of the spring bucket as illustrated. (**Note:** It maybe necessary to jack of the frame to unload the front springs in order to complete this step depending on the winding of the springs.) Tighten hardware at this time.



7. When disconnecting the sway bar links you can simply disconnect from the axle side and rotate the sway bar links up to the installed retention brackets and secure using the Retaining Clip removed from the axle side bullet pins.



Installation Instructions (Continued)

8. Installation is now completed!

WARNING

It is the owners' responsibility to inspect all Rusty's products for proper torque specs to prevent loosening of components. Seat belts and shoulder harnesses should be worn at all times. Re-check all bolts and nuts after the first 300 miles and after any off-road usage during the first 300 miles. Although all of our products are made from the highest quality materials possible, they are not a substitute for Safe and Careful driving. In other words, have good safe on-road / off-road sense. Know the terrain, the speed limitations, and any obstacles that may lie ahead. Please remember to preserve our right to enjoy public land through the proper use of off-road vehicles. Thank you for choosing Rusty's Off Road Products.