

RUSTY'S RAISED FRONT TRACK BAR MOUNT - JL WRANGLER / JT GLADIATOR RC-RAM899 INSTALLATION INSTRUCTIONS

Last Revised: 1/6/2024

Introduction:

Rusty's recommends that this installation be performed by a certified automotive technician or a person with professional mechanical knowledge. Installing this kit without this expertise may jeopardize the handling and safety of the vehicle.

Read instructions several times before starting. Be sure you have all the needed parts and know where they install. Read each step completely as you go. Exhaust modifications may be necessary. Prior to drilling or cutting, check behind the surface being worked on for any wires, lines, or hoses that could be damaged. After any drilling or cutting, remove burrs and grind smooth any surfaces. An inclinometer or similar tool may be needed to measure driveshaft angles before and after the installation.

Warning:

- It is the owners' responsibility to inspect all Rusty's products for proper torque specs to prevent loosening of components.
- Seat belts and shoulder harnesses should be worn at all times.
- Re-check all bolts and nuts after the first 100 miles and after any off-road usage during the first 300 miles.
- Although all of our products are made from the highest quality materials possible, they are not a substitute for Safe and Careful driving. In other words, have good safe on-road / off-road sense. Know the terrain, the speed limitations, and any obstacles that may lie ahead. Please remember to preserve our right to enjoy public land through the proper use of off-road vehicles.

Before Starting Installation:

1. Carefully Read all warnings and instructions completely before beginning.
2. Verify all parts have been received in this kit by checking the parts list on page#2 of this document.
3. Only install this kit on the vehicle for which it is specified.
4. Park the vehicle on a clean, dry, flat, level surface and block the tires so the vehicle cannot roll in either direction.
5. Be certain the vehicle is safely secured on jack stands or a vehicle lift prior to working around or under a vehicle. Never rely on a jack alone to support a vehicle's weight; use appropriately rated stands to support the vehicle's frame and any other heavy components.

Parts List:

Note: Please be sure that you have all the provided parts listed below before continuing with the installation.

Part #	DESCRIPTION:	Quantity
RC-RAM895	RUSTY'S RAISED FRONT TRACK BAR MOUNT - JL Wrangler / JT Gladiator (Contents Listed Below)	1
RAM895-SP1340	Rusty's 1" x .188" Wall x 1.340" Spacer	1
91959874	M14 x 2.00mm x 90mm Length Hex Head Cap Screw	1
67493163	M14 x 28mm O.D. Flat Washer	2
67486084	M14 x 2mm Hex Lock Nut	1
87915179	3/8"-16 x 1" Length Grade 8 Hex Head Cap Screw	1
67746602	3/8" SAE Flat Washer	1
67483446	3/8" - 16 Grade 8 Hex Serrated Flange Nut (Silver Finish)	1
67445569	M12 x 1.75mm x 60mm Length Hex Head Cap Screw	1
67486043	M12 x 1.75mm Grade 8 Hex Lock Nut	1

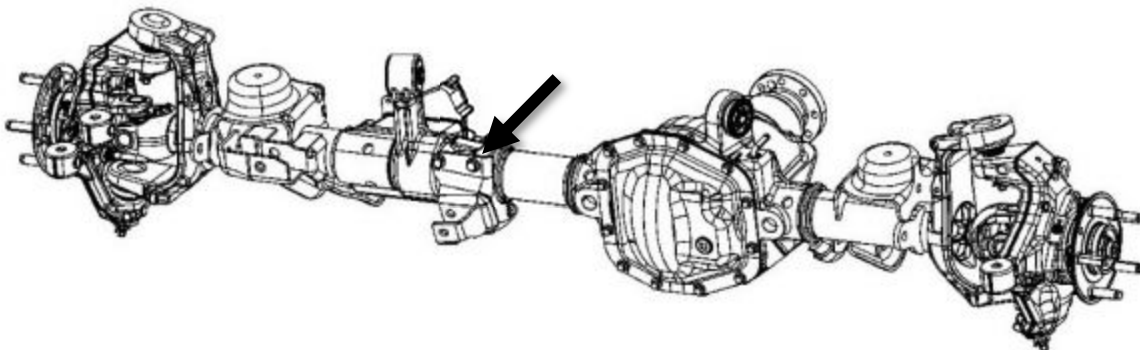
Installation Instructions

Note: Save all factory components and hardware for reuse, unless noted.

1. Remove the front track bar from the factory axle bracket and loosen the track bar from the frame bracket to allow the track bar to rotate out of the way. Secure the track bar up and out of the way. **(Note: We suggest using a bungee cord or ratchet strap to secure the track bar.)**
2. Remove the front passenger side sway bar from the factory axle bracket and rotate out of the way. Retain the hardware as it will be reused.



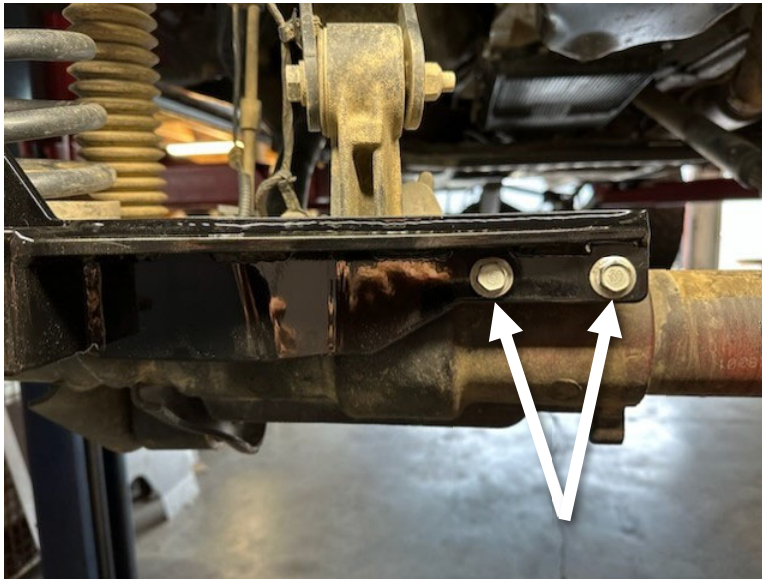
3. Remove the front track bar from the factory axle bracket and loosen the track bar from the frame bracket to allow the track bar to rotate out of the way. Secure the track bar up and out of the way. **(Note: We suggest using a bungee cord or ratchet strap to secure the track bar.)**
4. Remove the front passenger side sway bar from the factory axle bracket and rotate out of the way.
5. Remove the draglink from the passenger side steering knuckle and the pitman arm mounting locations.
6. Remove the axle side steering stabilizer shown in the image below. Retain the hardware as it will be reused.



Installation Instructions

Note: Save all factory components and hardware for reuse, unless noted.

7. (Optional) Remove the steering tie rod assembly from the steering knuckles to gain better access for the new trackbar relocation bracket installation. This is not required but may make the installation process much easier.
8. Install the supplied raised front track bar mount using the factory hardware removed from the axle during step #6. (Do not fully tighten at this time.)



9. Install the supplied tube spacer in the factory track bar mounting location and install the supplied M14 x 2.00mm x 90mm Length Hex Head Cap Screw (Qty:1), Washers (Qty:2), Lock Nut. (Do not fully tighten at this time.)



Installation Instructions

Note: Save all factory components and hardware for reuse, unless noted.

10. Reinstall the front passenger side sway bar link with the factory hardware retained when removed during step# 2. (Do not fully tighten at this time.)
11. With the use of a 3/8" drill, you will need to mark and drill the hole location marked below using the hole location in the new bracket as a pilot guide. Once drilled clean out any metal burs and install the supplied 3/8"-16 x 1" Length Grade 8 Hex Head Cap Screw (Qty:1), Washer, and Locknut.



10. Reinstall the front passenger side sway bar link with the factory hardware retained when removed during step# 2. (Do not fully tighten at this time.)
11. With the use of a 3/8" drill, you will need to mark and drill the hole location marked below using the hole location in the new bracket as a pilot guide. Once drilled clean out any metal burs and install the supplied 3/8"-16 x 1" Length Grade 8 Hex Head Cap Screw (Qty:1), Washer, and Locknut.
12. Refer to the supplied RS-SS99-JLJT instruction to complete the installation of steering knuckle shim at this time.
13. Install your tie rod and drag link assemblies according to the supplied instructions.
14. Reinstall the tires and wheels at this time and carefully lower the vehicle back to the ground.
15. Center the front axle under the vehicle and adjust the track bar to the correct length, and reinstall back into the raised track bar mounting location using the factory hardware.

Installation Instructions

16. Tighten the hardware on the track bar relocation mount in the order as listed below.
 - A. Tighten the M14 Hardware
 - B. Tighten the 3/8" Hardware
 - C. Factory Hardware on the axle tube
 - D. Swaybar Link Hardware
17. Set your tow adjustment on the tie rod at this time.
18. Install your steering stabilizer using the supplied M12 x 1.75mm x 60mm Length Hex Head Cap Screw and Washer to the new mounting location on the relocation bracket.
19. Adjust the drag link to center the steering wheel at this time.
20. Installation is now complete! (Please note: Rusty's strongly recommends to cycle your suspension on the front axle to check if any bumpstop extensions are needed with the use of the raised drag link flip configuration.)

Final Notes

At this point there should be no parts left but installing the stickers. The vehicle will need to have an alignment as soon as possible, if you don't you may get the "death wobble", poor tire wear or just a bad handling vehicle.

Alignment Recommended Specifications

- Toe: Should be set at 0 to 1/32" Toe Out
- Castor: +7 Degrees Positive
- Camber: 0 Degrees

Re-torque all fasteners after 500 miles and recheck after 1000 miles. Visually inspect components and re-torque fasteners during routine vehicle service.

WARNING

It is the owners' responsibility to inspect all Rusty's products for proper torque specs to prevent loosening of components. Seat belts and shoulder harnesses should be worn at all times. Re-check all bolts and nuts after the first 300 miles and after any off-road usage during the first 300 miles. Although all of our products are made from the highest quality materials possible, they are not a substitute for Safe and Careful driving. In other words, have good safe on-road / off-road sense. Know the terrain, the speed limitations, and any obstacles that may lie ahead. Please remember to preserve our right to enjoy public land through the proper use of off-road vehicles. Thank you for choosing Rusty's Off Road Products.