

Rusty's JL Wrangler Rear Fascia Cover Kit RA-7788-JL INSTALLATION INSTRUCTIONS

Last Revised: 3/14/19

Introduction:

Rusty's recommends that this installation be performed by a certified automotive technician or a person with professional mechanical knowledge. Installing this kit without this expertise may jeopardize the handling and safety of the vehicle.

Read instructions several times before starting. Be sure you have all the needed parts and know where they install. Read each step completely as you go. Exhaust modifications may be necessary. Prior to drilling or cutting, check behind the surface being worked on for any wires, lines, or hoses that could be damaged. After any drilling or cutting, remove burrs and grind smooth any surfaces. An inclinometer or similar tool may be needed to measure driveshaft angles before and after the installation.

Warning:

- It is the owners' responsibility to inspect all Rusty's products for proper torque specs to prevent loosening of components.
- Seat belts and shoulder harnesses should be worn at all times.
- Re-check all bolts and nuts after the first 100 miles and after any off-road usage during the first 300 miles.
- Although all of our products are made from the highest quality materials possible, they are not a substitute for Safe and Careful driving. In other words, have good safe on-road / off-road sense. Know the terrain, the speed limitations, and any obstacles that may lie ahead. Please remember to preserve our right to enjoy public land through the proper use of off-road vehicles.

Before Starting Installation:

1. Carefully Read all warnings and instructions completely before beginning.
2. Verify all parts have been received in this kit by checking the parts list on page#2 of this document.
3. Only install this kit on the vehicle for which it is specified.
4. Park the vehicle on a clean, dry, flat, level surface and block the tires so the vehicle cannot roll in either direction.
5. Be certain the vehicle is safely secured on jack stands or a vehicle lift prior to working around or under a vehicle. Never rely on a jack alone to support a vehicle's weight; use appropriately rated stands to support the vehicle's frame and any other heavy components.

Parts List:

Note: Please be sure that you have all the provided parts listed below before continuing with the installation.

Part #	DESCRIPTION:	Quantity
RA-7788-JL-RC	Rusty's JL Wrangler Rear Center Fascia Cover Panel	1
RA-7788-JL-DS	Rusty's JL Wrangler Rear Driver Side Fascia Cover Panel	1
RA-7788-JL-PS	Rusty's JL Wrangler Rear Passenger Side Fascia Cover Panel	1
67563080	1/4"-20 x 3/4" Length Button Head Cap Screw	17
08411266	1/4"-20 Knurled Threaded Nut Insert	9
67483762	1/4"-20 Serrated Flange Nut	8
09331745	1/4"-20 UNC Manual Threaded Insert Installation Tool	1

Installation Instructions

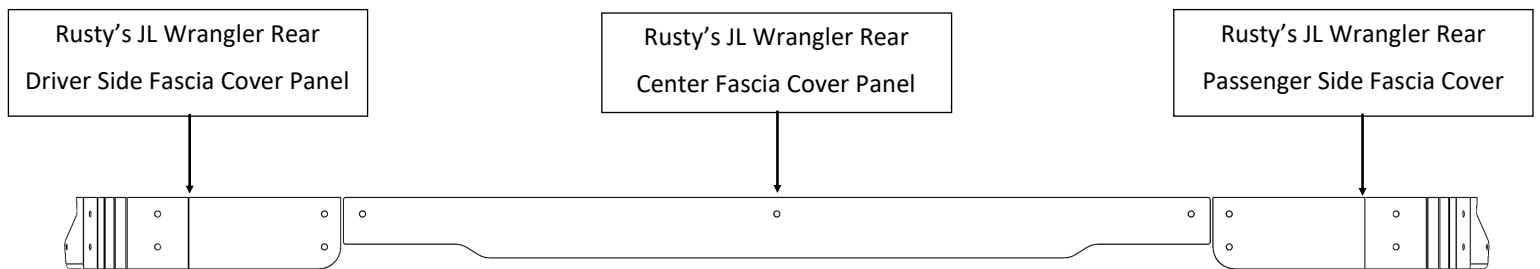
Note: Save all factory components and hardware for reuse, unless noted.

1. Open the rear tailgate and remove the access panel cover to the rear storage compartment. Remove all contents before continuing with the installation.

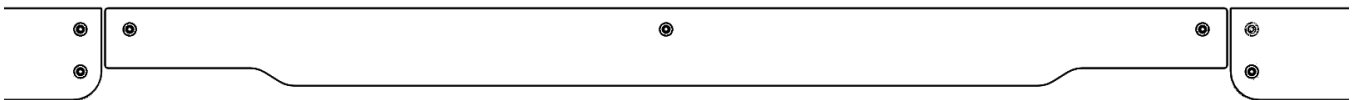


Installation Instructions (Continued)

2. Clean the pinch seam and area below the tailgate.
3. With the help from an assistant hold and position the side armor plates so that the front edge sits flush with the front side of the pinch seam and the edge of the armor plates aligns with the bottom edge of the pinch seam. While holding the side panels in place position the supplied Rusty's JL Wrangler Rear Center Fascia Cover Panel to ensure the outer panels and the center are aligned and spaced equally as shown in the image below.





4. Mark the all hole locations in both the Rusty's JL Wrangler Rear Driver, Passenger Side Fascia Cover Panels, and Rear Center Fascia Cover Panel carefully while holding all three panels in position to ensure the best fitment. This step is critical to ensure that the gap and panels are align when installed.

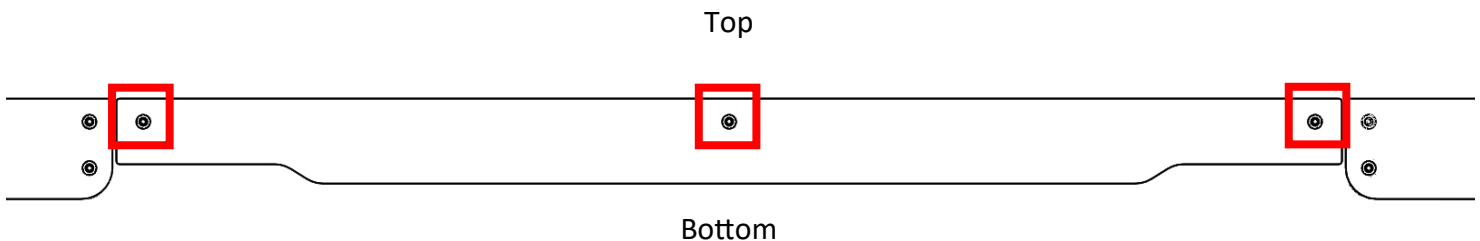
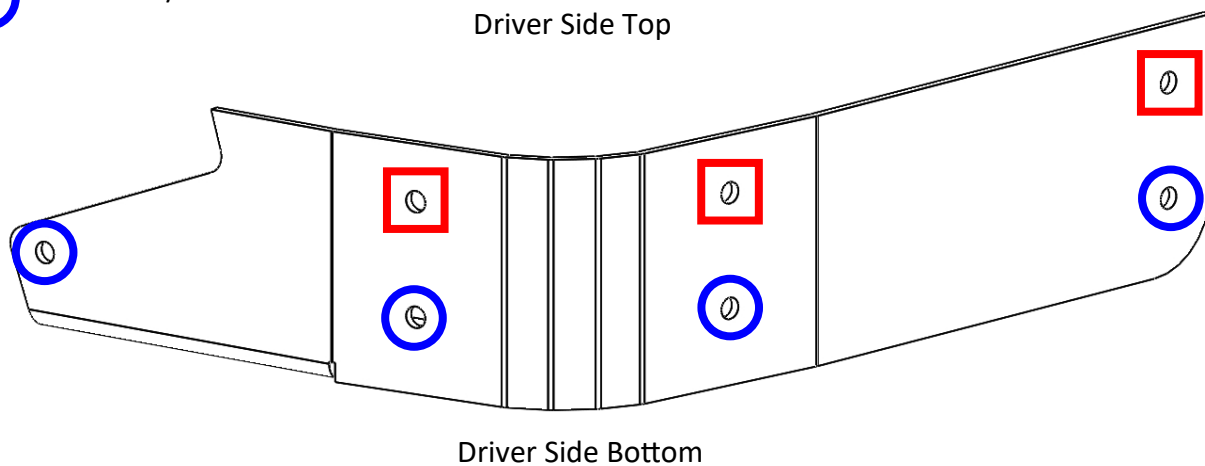


Installation Instructions (Continued)

5. Remove the fascia panels and drill each of the marked holes to the appropriate size as shown below for both the driver, center and passenger side fascia panel mounting hole locations. (**Note:** It is suggest to start by center punching the holes first then drill each of the holes with a small pilot drill before drilling to the final drill diameter.) (**Note:** Double check all areas before drilling for any hoses, wiring, etc. that

 Drill to 25/64"

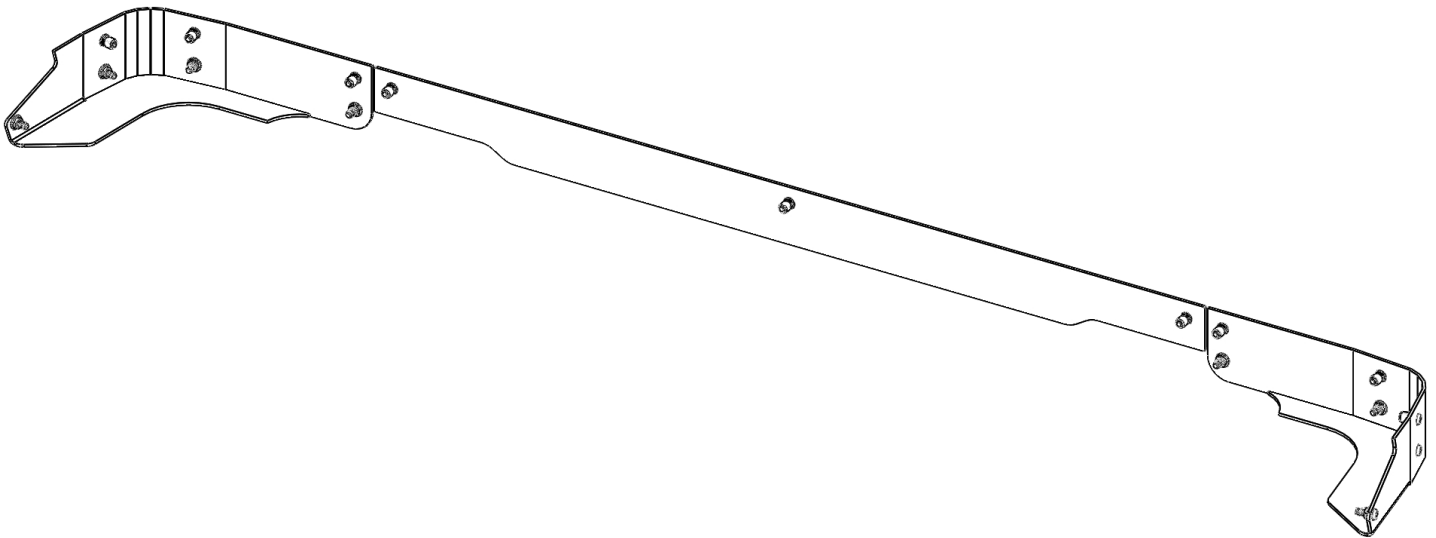
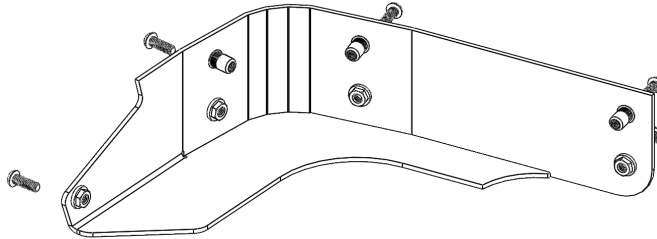
 Drill to 9/32"



6. Install the supplied 1/4"-20 Knurled Threaded Nut Insert in each of the hole locations drilled to 25/64" during step# 5 with the supplied 1/4"-20 UNC Manual Threaded Insert Installation Tool. (**Note:** When using the 1/4"-20 UNC Manual Threaded Insert Installation Tool make sure to use the provided instructions. We also recommend to keep the threads of the thread insert tool lubricated in order to maximize tool life.)

Installation Instructions (Continued)

7. Install the fascia panels using the supplied 1/4"-20 x 3/4" Length Button Head Cap Screws and 1/4"-20 Serrated Flange Nuts as shown below. Do not fully tighten the hardware at this time so that any adjustments can be made if needed.



8. Align the panels with one another and tighten all of the supplied hardware.
9. Installation is now complete!

WARNING

It is the owners' responsibility to inspect all Rusty's products for proper torque specs to prevent loosening of components. Seat belts and shoulder harnesses should be worn at all times. Re-check all bolts and nuts after the first 300 miles and after any off-road usage during the first 300 miles. Although all of our products are made from the highest quality materials possible, they are not a substitute for Safe and Careful driving. In other words, have good safe on-road / off-road sense. Know the terrain, the speed limitations, and any obstacles that may lie ahead. Please remember to preserve our right to enjoy public land through the proper use of off-road vehicles. Thank you for choosing Rusty's Off Road Products.