

FRONT ELEVATION  
NOT TO SCALE

## SPECIFICATIONS

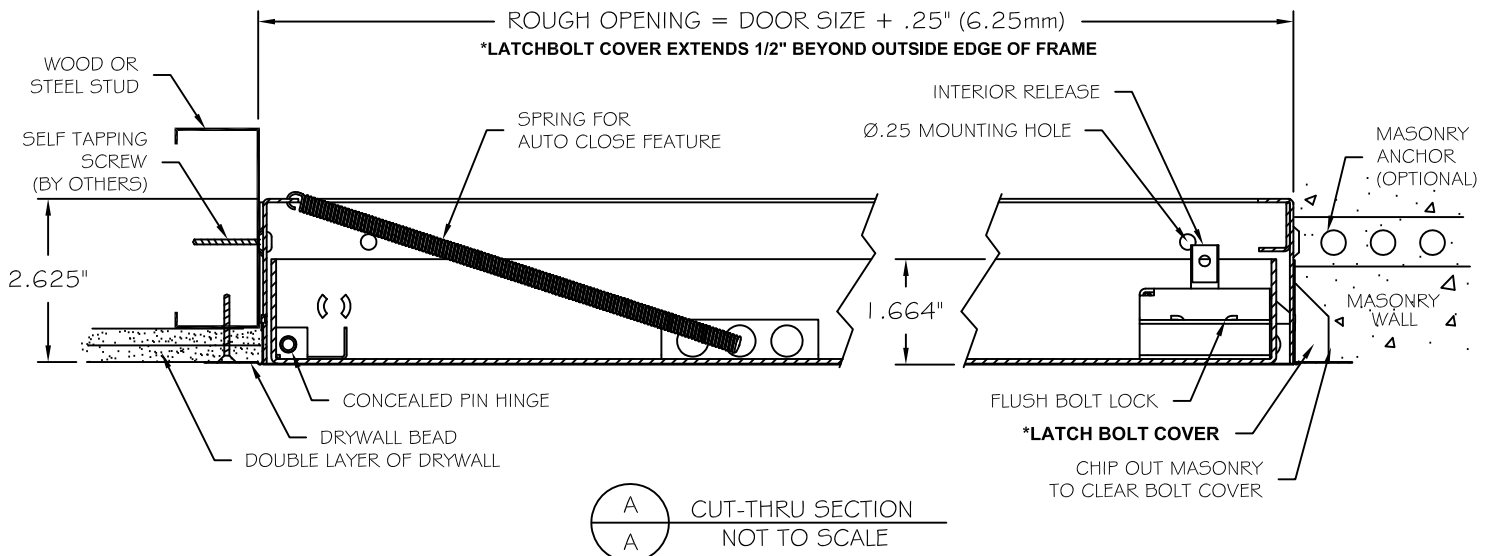
- 16 GAUGE COLD ROLLED STEEL FRAME
- 14 GAUGE COLD ROLLED STEEL DOOR
- 22 GAUGE GALVANIZED STEEL DRYWALL BEAD
- GRAY BAKED ON POWDER COAT FINISH
- STEEL CONCEALED PIN HINGE
- SPRING DOOR CLOSURE
- FRAMES PROVIDED WITH 1/4" MOUNTING HOLES
- FLUSH KEY OR METAL KNURLED KNOB OPERATED LOCK
- INTERIOR RELEASE MECHANISM

## OPTIONS

- GALVANIZED BONDORIZED STEEL
- #4 STAINLESS STEEL WITH ZINC PLATED STEEL CONCEALED PIN HINGE
- STAINLESS STEEL CONTINUOUS PIANO HINGE (AVAILABLE ON STAINLESS STEEL PANELS ONLY)
- MORTISE PREPARATION - 1.125" CYLINDER BY OTHERS (OR BY FACTORY)
- FLUSH STEEL CONTINUOUS PIANO HINGE

## LISTINGS

1 1/2 HR. "B" LABEL



A  
A  
CUT-THRU SECTION  
NOT TO SCALE

Standard Features:

- Door: 14 gauge (.912mm thick) cold rolled steel
- Frame: 16 gauge (1.52mm thick) cold rolled steel with 22 gauge galvanized drywall bead
- Hinge: Concealed pin hinge  
Optional: Flush continuous piano hinge
- Latch: Knurled knob/Key operated latch bolt  
Optional: Mortise cylinder preparation (cylinder provided by factory or by others)
- Finish: Gray baked on powder coat  
Optional: galvanized bonderized or stainless steel with #4 satin polish finish
- Insulation: None
- Other: Self-closing with interior release mechanism

Specifications:

Frame shall be 16 gauge cold rolled steel with 22 gauge galvanized drywall bead. Door shall be fabricated from 14 gauge cold rolled steel. Door shall be self-latching with automatic closer and interior latch release mechanism. Hinge shall be concealed pin type. Latch(es) shall be knurled knob/key operated latch bolt (optional: preparation to receive 1 1/8" mortise cylinder - cylinder provided by factory or others). This assembly shall carry a 1 1/2 hour UL "B" label for walls only (250 degrees maximum temperature rise, 30 minutes). Finish shall be gray baked on powder coat (optional: galvanized bonderized steel or stainless steel with #4 satin polish finish).

Installation shall be in accordance with manufacturers instructions. Manufacturer shall guarantee against defects in material and workmanship for a period of one year.

Standard Sizes:

Std Sizes (in)	Std Sizes (mm)	Weight/Latches	Std Sizes (in)	Std Sizes (mm)	Weight/Latches
08x08	203x203	5/1	22x30	559x762	23/1
10x10	254x254	7/1	22x36	559x914	29/2
12x12	305x305	9/1	24x24	610x610	21/1
12x18	305x457	13/1	24x30	610x762	23/1
12x24	305x610	14/1	24x36	610x914	29/2
14x14	356x356	13/1	24x48	610x1219	42/2
16x16	406x406	12/1	30x30	762x762	29/1
18x18	457x457	14/1	32x32	813x813	35/1
18x24	457x610	19/1	36x36	914x914	40/2
20x30	508x762	21/1	36x48	914x1219	50/2
22x22	559x559	20/1			

All units are hinged on the second dimension (height). Rough opening is door size plus 1/4". These access doors are designed for use in wall applications only.