

# Niagara Sliding Track

Formulating  
character and  
distinction.

☎ 1300 754 337

🖱 [www.criterionindustries.com.au](http://www.criterionindustries.com.au)

 **Criterion**





# Niagara Sliding Track

Niagara is a high strength aluminium roller system designed to withstand high traffic commercial spaces. Combining contemporary style and smooth functionality, Niagara is a versatile system that seamlessly integrates into variety of spaces.

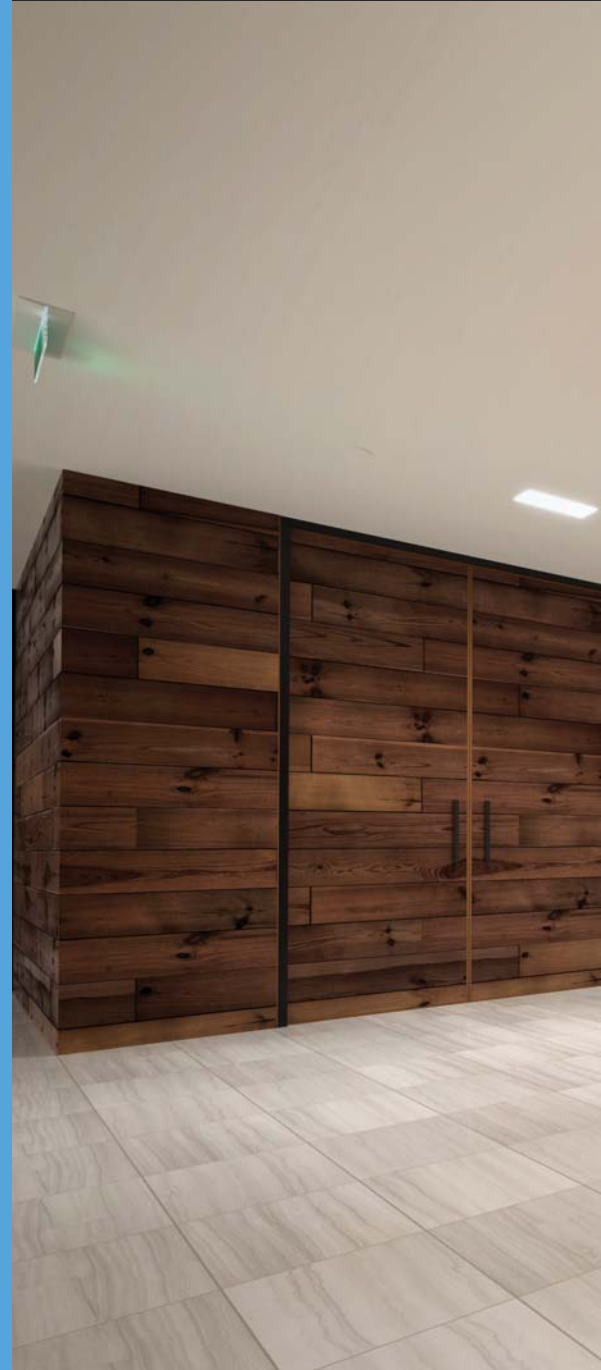
Niagara is available in a variety of pre-finished colours to suit your project requirements. The roller assembly boasts smooth ball bearing wheels that can hold up to 250kg. The system can be used throughout a range of internal commercial spaces including shops, banks, schools and other settings.

Engineered for simple installation, the Niagara system is designed with an end cap and removable pelmet to make adjustments and easily access rollers.

The Niagara sliding track is the perfect solution for spaces where quality and durability is of equal priority.

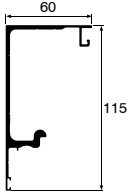
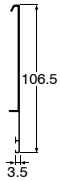
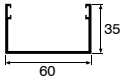
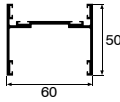
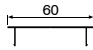
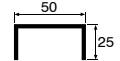
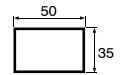
## Why Choose Niagara?

- + Removable pelmet
- + Holds door capacity up to 250kg
- + Suits 44mm door thickness
- + Heavy duty
- + Simple installation



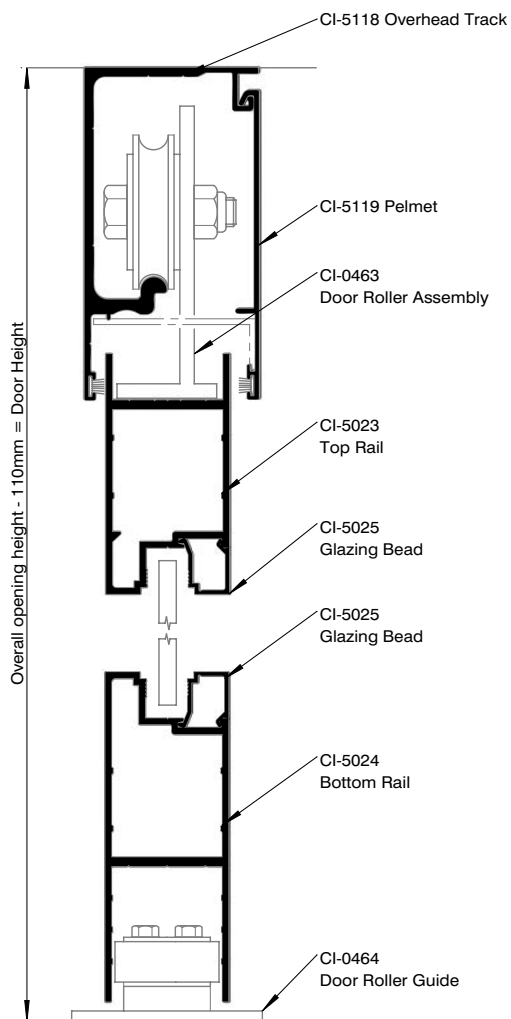


NIAGARA SLIDING TRACK - ASCIANO, MELBOURNE

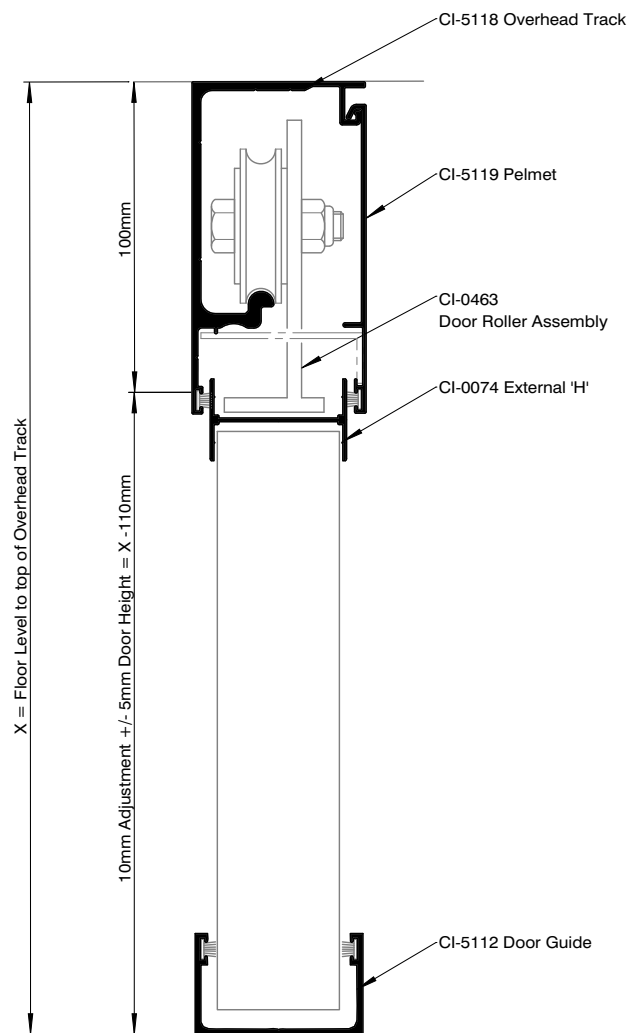
SECTION IMAGE	DESCRIPTION	LENGTH	ITEM CODE	
			NATURAL ANODISED	STANDARD POWDERCOAT
	<b>CI-5118 Overhead Track (115 x 60mm)</b>	3250mm	511832.1	511832.2
		6500mm	511865.1	511865.2
	<b>CI-5119 Pelmet (To suit CI-5118 Overhead Track)</b>	3250mm	511932.1	511932.2
		6500mm	511965.1	511965.2
	<b>CI-5112 Door Guide</b>	6500mm	511265.1	511265.2
	<b>CI-5114 Sliding Door Receiver</b>	3250mm	511432.1	511432.2
	<b>CI-5115 S/D Receiver Capping</b>	3250mm	511532.1	511532.2
	<b>CI-5653 Receiver Channel</b>	6500mm	565365.1	565365.2
	<b>CI-5113 Striker Stile 55 x 35 x 2</b>	6500mm	511365.1	511365.2

# NIAGARA ELEVATIONS

## ALUMINIUM DOOR

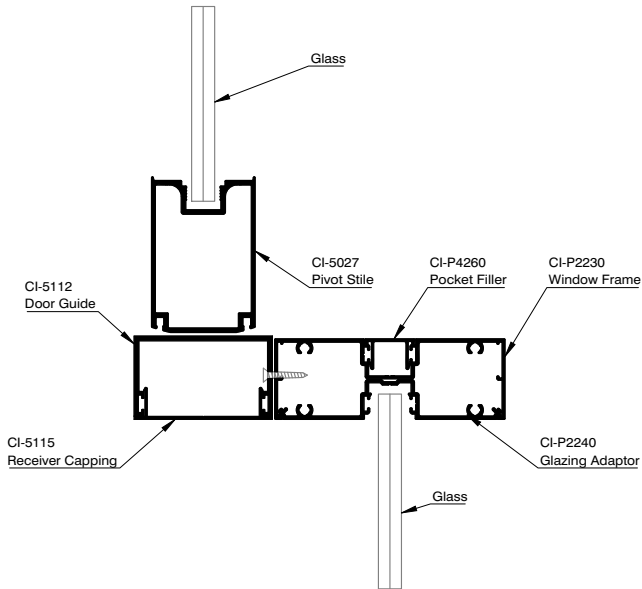


## TIMBER DOOR

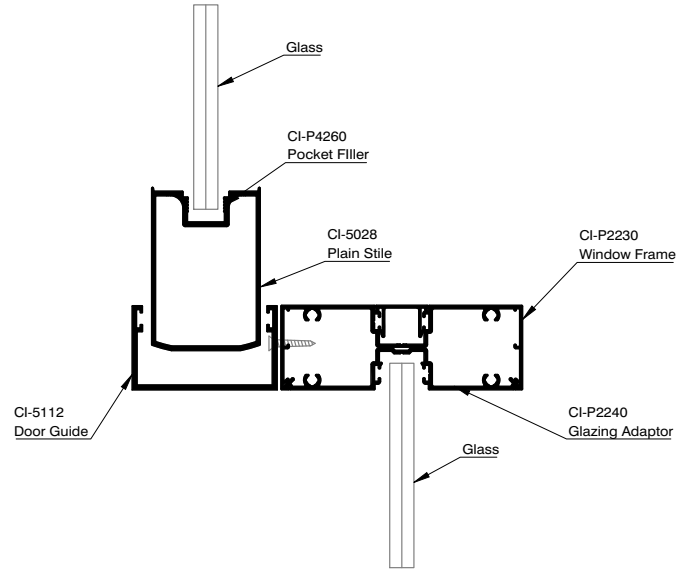


# NIAGARA PLAN VIEWS

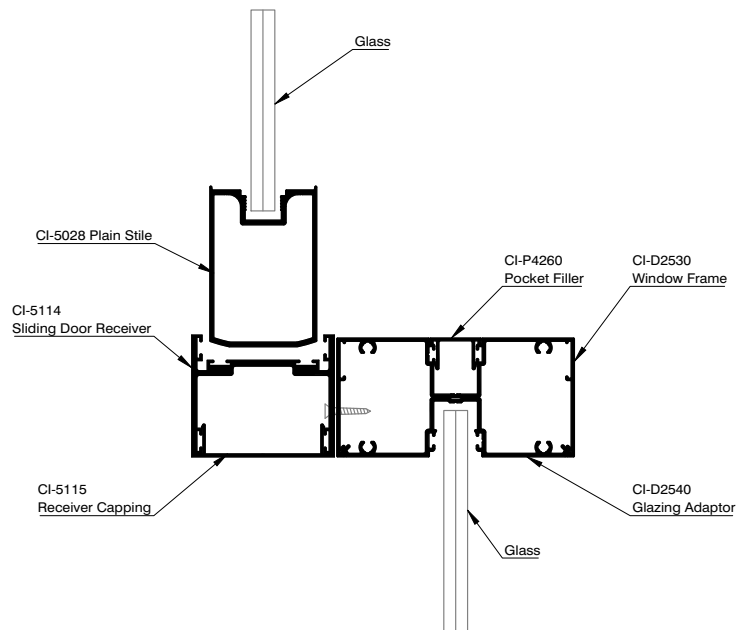
## CI-5112 & CI-5115 PLAN VIEW



## CI-5112 PLAN VIEW



## CI-5114 PLAN VIEW



# NIAGARA ASSOCIATED HARDWARE

## DOOR ROLLERS

DESCRIPTION	UNIT	CODE
Niagara Sliding Pack (with Door Guide)	Each	817116
Niagara Sliding Pack (with Roller Guide)	Each	817117
CI-0463 Door Roller Assembly	Each	817000

## CAP

DESCRIPTION	UNIT	COLOUR	CODE
Niagara End Cap PVC (Suits 5118 Overhead Track)	Each	Silver	81715171.S
		Black	81715171.B
		White	81715171.W

## DOOR GUIDE

DESCRIPTION	UNIT	CODE
Plastic T-Guide	Each	817035

## ACOUSTIC SEALS

DESCRIPTION	UNIT	COLOUR	CODE
Whisperwing Seal 6.9mm	Lineal Metre	Grey	841469.G
		Black	841469.B
	100m Roll	Grey	841469.GBR
		Black	841469.BBR
6.9mm with 6mm Pile	Lineal Metre	Grey	843694.G
		Black	843694.B
	100m Roll	Grey	843694.GBR
		Black	843694.BBR
6.9mm with 9mm Pile	Lineal Metre	Grey	843699.G
		Black	843699.B
	100m Roll	Grey	843699.GBR
		Black	843699.BBR
6.9mm Door Seal Self Adhesive	Lineal Metre	Grey	843694.GSA
		Black	843694.BSA
	300m Roll	Grey	843694.GSABR
		Black	843694.BSABR
6.9 Rubber Bulb Seal	Lineal Metre	Black	841369

## DOOR GUIDE

DESCRIPTION	UNIT	COLOUR	CODE
6mm Spline	Lineal Metre	Black	817112
	300m Roll	Black	817112BR



# Formulating character and distinction.

Looking to discover more?

Contact us to book your  
free demonstration:

☎ **1300 754 337**

🖱 [www.criterionindustries.com.au](http://www.criterionindustries.com.au)



## **VIC**

23 Scanlon Drive  
Epping, VIC, 3076  
T: 03 9355 0700

[sales@criterionindustries.com.au](mailto:sales@criterionindustries.com.au)

## **NSW**

95 Victoria Street  
Smithfield, NSW, 2164  
T: 02 9355 0700

[sales.nsw@criterionindustries.com.au](mailto:sales.nsw@criterionindustries.com.au)

## **WA**

58 Tacoma Circuit  
Canning Vale WA 6155  
T: 08 9355 0700

[sales.wa@criterionindustries.com.au](mailto:sales.wa@criterionindustries.com.au)

## **QLD**

22 Holt Street  
Eagle Farm QLD 4009  
T: 07 3193 8990

[sales.qld@criterionindustries.com.au](mailto:sales.qld@criterionindustries.com.au)