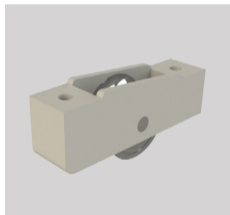


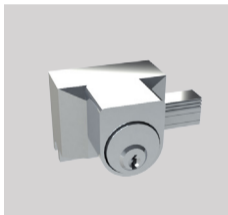
**Miami 220  
Twin Roller  
Installation  
Instructions**



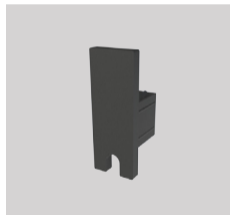
## Contents:



CI 500A  
Adjustable Roller

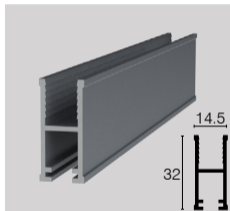


F604  
Keyed Plunger Lock

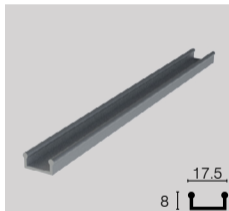


Nylon End Cap

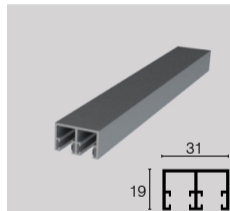
## Contents:



CI-48 Bottom Race



CI-47 Double Track



CI-21 Double Head Guide

## Step 1:



Screw the double track to opening

## Step 2:



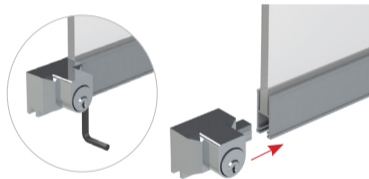
Screw the double head guide to opening

### Step 3:



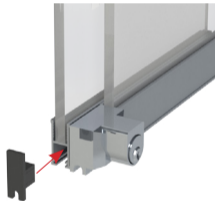
Position rollers 40mm in from the edge of the glass and tighten screws

### Step 4:



Slide the plunger lock into extrusion and tighten grub screws

## Step 5:



Fit end caps to the bottom race

## Step 6:



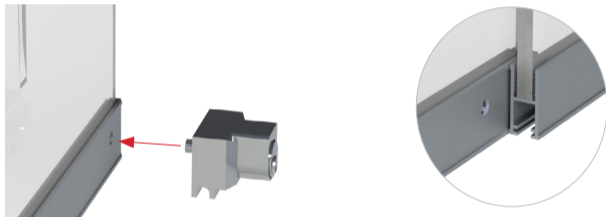
Fit glass panels into the double head guide

## Step 7:



Locate rollers onto double track

## Step 8:



Move panels into closed position and mark the aluminium where lock pins hits race section of parallel panel

Drill through one side of the aluminium race ensuring no interference with end cap or roller

## Step 9:



Fit glass panel back into double head guide and onto the double track



# Criterion Products Available

**Timber Doors**



**VIC 03 9355 0700**

**Aluminium Doors**



**NSW 02 9355 0700**

**Door Furniture**



**WA 08 9355 0700**