

Cannabinoid Potency Analysis by High Performance Liquid Chromatography

Test Accreditation #: 77802

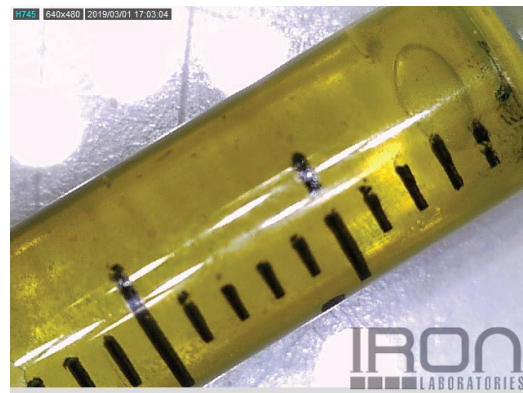
Sample ID #: 115398

Test Date: 03/04/2019

Sample Details
Product: Tasty Drops 1oz 1000mg Vanilla
Sample: 022719C
LOT: FG002432
Sampled Product: Infused Product
Method: FE04U HPLC1100-1
Molds/Pests: N/A

Test Conditions
Scale: XS205-M12
Temp.: 22.0 °C
Baro Pressure: 979.4 hPa

Simple Cannabinoid Profile Overview
Total Product Size: 28g
****Total Cannabinoids:** 1,041.6mg



Test Compounds	THC	THCA	CBD	CBDA	CBN	CBG*	CBC*	THCV*	CBDV*	Total Cannabinoids	Total THC	Total CBD	Calc Max Total Cannabinoids*
Amount (%)	0.1 [†]	0.1	1.0	2.9	N/D	N/D	0.1	N/D	N/D	4.1%	0.1% [†]	3.5%	3.7%
Amount (mg/g)	0.9 [†]	0.5	10.2	28.5	N/D	N/D	0.6	N/D	N/D	40.7mg/g	1.4mg/g [†]	35.2mg/g	37.2mg/g
Amount/Serving (mg)	0.9 [†]	0.5	10.2	28.5	N/D	N/D	0.6	N/D	N/D	40.7mg/g	Serving Size [~] (g):		1.0
LOQ (mg/g)	0.19	0.19	0.19	0.19	0.19	0.19	0.19	0.19	0.19		%Decarb.	THC	CBD
±% RPD	1.3	1.4	2.4	1.1	0.6	2.4	4.5	1.2	4.7			64	26

[†] This passes our quality control guidelines for non-psychoactive industrial hemp oil. See next page for more details.
 LOQ = Limit of Quantitation; %RPD = Relative Percent Deviation; N/D = Not Detected

[†] Uncertainty measurement is for the test procedure and the instrument used; and is calculated in accordance with the ISO "Guide of Uncertainty in Measurement" (GUM) Test Results and uncertainty are only representative of the sample submit to Iron Laboratories. Uncertainty does not account for any uncertainty in the sampling. The measurement of uncertainty is the expanded uncertainty and is an estimate of uncertainty calculated with normal distribution and a coverage factor of 2 (K=2) to approximate a 95% confidence level.

* Designates compounds that are not currently included in Iron Laboratories' accredited scope.

Total THC and CBD is the calculated sum of THC or CBD and the amount of THC or CBD derived from THCA or CBDA, respectively. These values are calculated by applying a molar correction factor of 0.877 to the THCA or the CBDA value. Calc Max Total Cannabinoids is the sum of Total THC, Total CBD, CBN, CBG, CBC, THCV, and CBDV.

CBD Decarb. % refers to the percentage of CBD relative to CBDA.

All lab testing is performed by a third party facility at one of the labs listed below. The results are taken from a sample of this product. This Certificate of Analysis (COA) is for internal use only and shall not be replicated or shared without written approval from CBD Guru.

** Total Cannabinoids in the simple cannabinoid profile overview is the calculated total amount of cannabinoids in the finished product. This value is found by multiplying the Total Cannabinoids (milligram per gram) in this test result by the total weight (grams) of the product.



ISO/IEC 17025:2005 Accredited



Management Signature