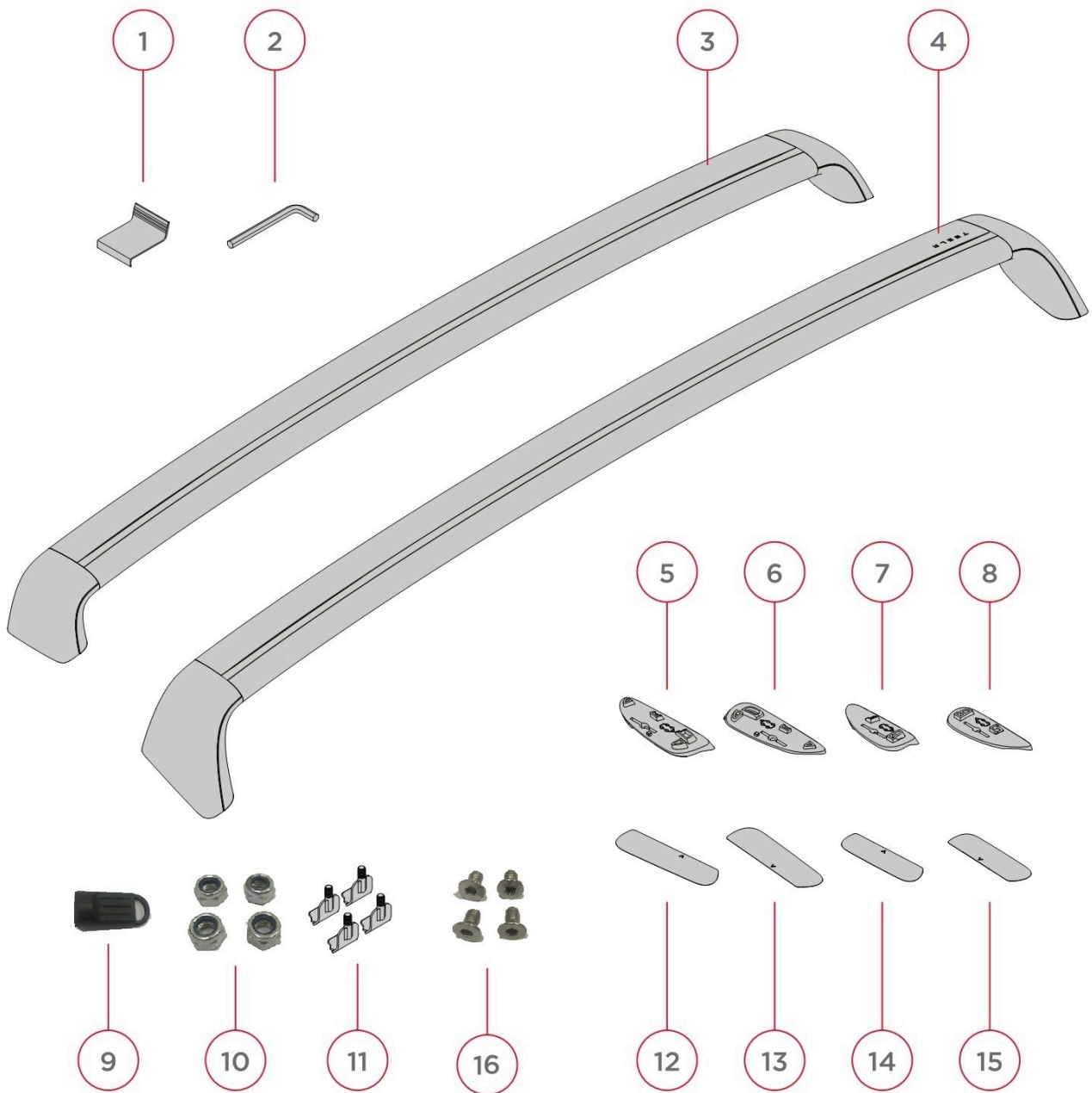
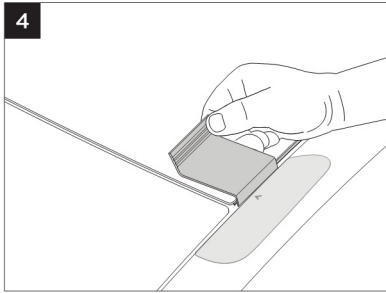


TALSEM

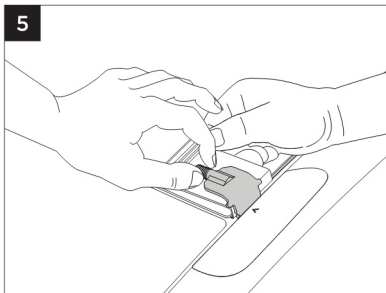


- | | | | |
|----|--------------------------|-----|-----------------------------------|
| 1. | Clip Tool | 9. | Key |
| 2. | Hex Wrench | 10. | nuts x4 |
| 3. | Rear Crossbar | 11. | Clips x4 |
| 4. | Front Crossbar | 12. | Anti-Abrasion Tape (front driver) |
| 5. | Front Driver Side Pad | 13. | Anti-Abrasion Tape (front pass.) |
| 6. | Front Passenger Side Pad | 14. | Anti-Abrasion Tape (rear driver) |
| 7. | Rear Driver Side Pad | 15. | Anti-Abrasion Tape (rear pass.) |
| 8. | Rear Passenger Side Pad | 16. | Plate Nuts x4 |

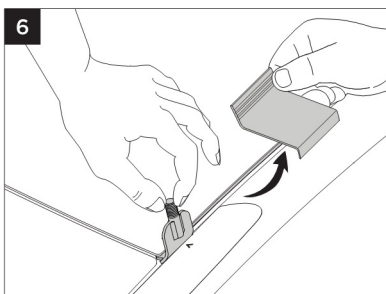
Instructions Continued



Use the clip tool (1) to carefully retract the rubber gasket at the arrow location.



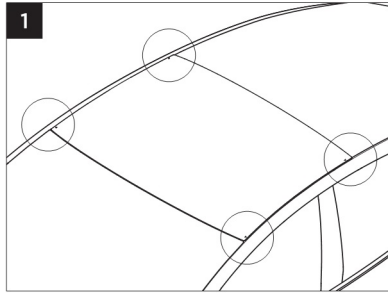
Keeping the clip tool in place, carefully insert a clip (11) at the arrow location.



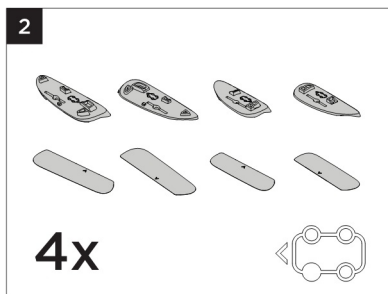
Remove the clip tool (1), being sure the clip (11) is engaged in the metal receiver under the glass. Pull up and wiggle the hook to be sure it's properly engaged. Be sure the center of the hook aligns with the arrow.

Repeat steps 4 to 6 to install a clip (11) on the other three corners of the car.

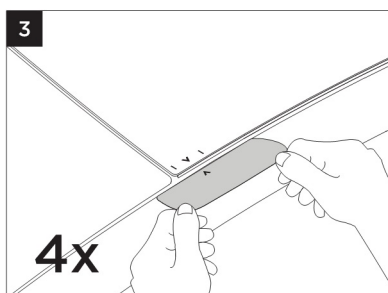
Instructions



Thoroughly clean vehicle's roof around the location of the arrows on the glass.



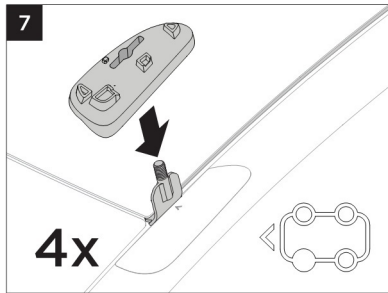
Use the icon on the footpads (5-8) to help identify the appropriate position on the vehicle and match anti-abrasion tape (12-15) to footpad (5-8).



Apply anti-abrasion tape (12) to the front driver side of the vehicle by aligning the arrow on the glass with the arrow on anti-abrasion tape (12), and aligning the edge of the tape with the edge of the trim line.

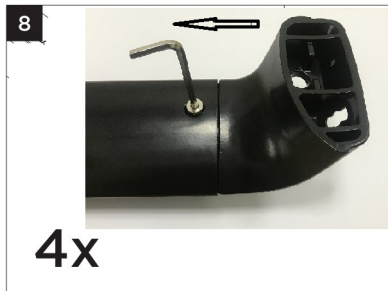
Repeat for the other three corners of the car.

Instructions Continued



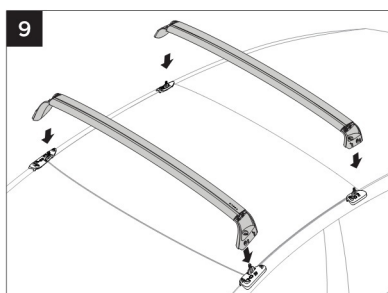
Place the front driver side pad (5) over the clip on the front driver side. Use the icon to help identify and install the correct pad (5-8) in the proper location.

Repeat to install the remaining pads (6-8) at the other three corners of the car.



Insert the tower into the bar properly, install the plate nut (16) and tighten by hex wrench (2). Pull in all directions and ensure there is no movement.

Repeat to install other three towers.



CROSSBAR INSTALLATION:

Ensure all four clips are engaged, properly aligned (steps 5-6), and in the upright position. Then, carefully place the front and rear crossbars (3-4) over the pads.

Instructions Continued

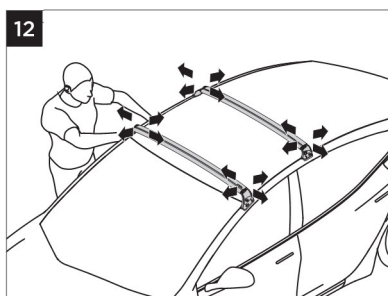


Install the nut (10) and tighten onto each of the towers.
We recommend tightening to **2.5 - 3.5Nm**. To confirm the tower is properly installed, pull in all directions and ensure there's no movement.

*** Overtightening will result in broken glass.**



Replace the covers. Start with the bottom edge then press the top into place.
Use the key (9) to lock each cover



Test that the front and rear crossbars are securely installed by pulling vigorously in all directions.