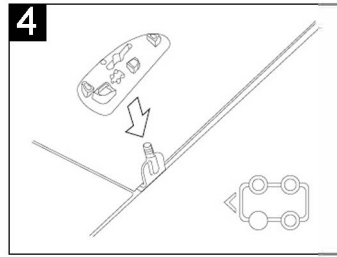
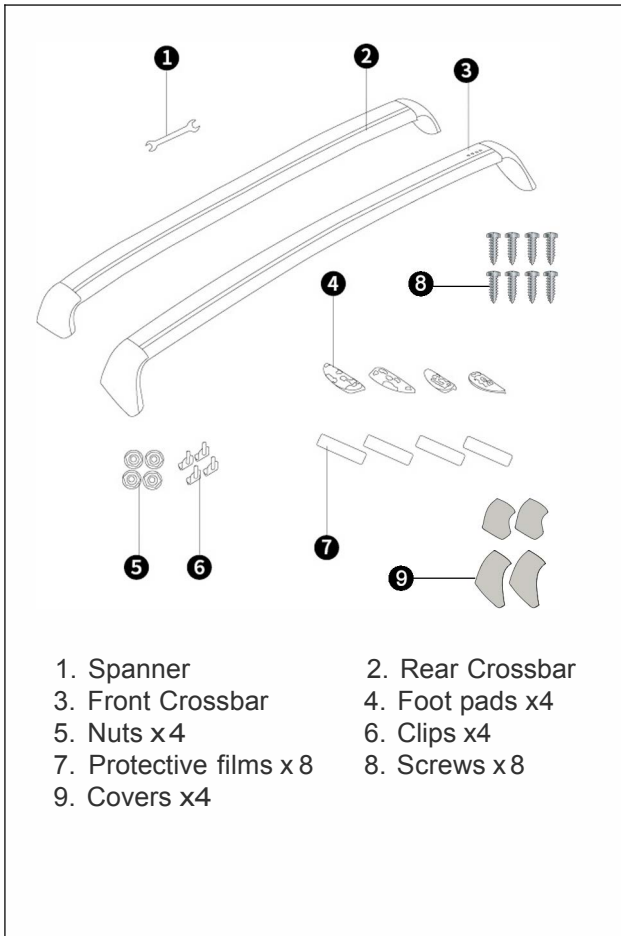
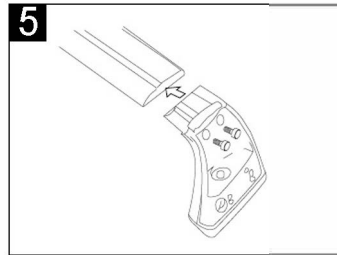


# TALSEM

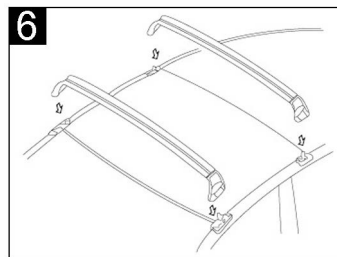
## Model Y Roof Rack - Owner's Manual



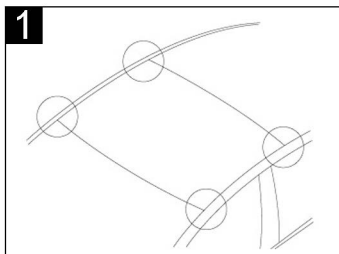
Place the front driver side pad over the clip on the front driver side. Use the icon to help identify and install the correct pad in the proper location. Repeat to install the remaining pads at the other three corners of the car.



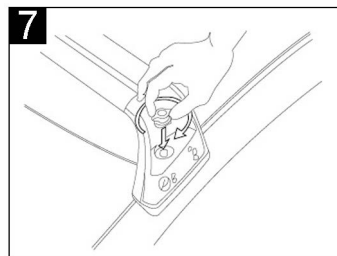
Fit the corresponding ends to each crossbar and tighten with screws (#8). Each end should require two screws. Each end is different, make sure to test fitting before secure installation with screws.



Ensure all four clips are engaged, properly aligned and in the upright position. Then, carefully place the front and rear crossbars over the pads.

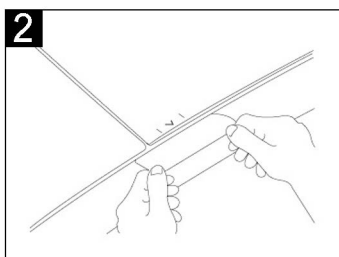


1. Thoroughly clean vehicle's rooftop around the location of the glass.

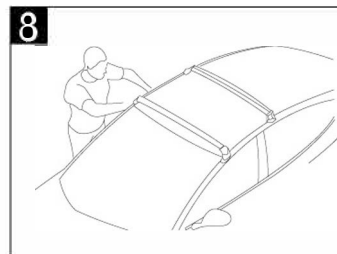


7. Install the nuts and tighten with spanner onto each of the towers. We recommend tightening to 2.5-3.5 Nm. To confirm the tower is properly installed, pull in all directions and ensure there's no movement.

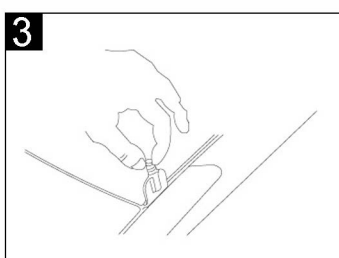
**Note: Overtightening may result in vehicle damage.**



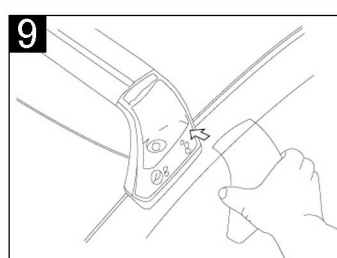
2. Apply one protective film to the front driver side of the vehicle and align the edge of the film with the trim line. Repeat for the other three corners of the car.



8. Test that the front and rear crossbars are securely installed by pulling vigorously in all directions



3. Carefully insert a clip at the arrow location. Make sure the clip is engaged in the metal receiver under the glass. Repeat this to install a clip on the other three corners of the car.



9. Install covers. Start with the bottom edge then press the top into place.