

Product Description: Hemp CBD Tincture - 1500mg / 30ml - CO2, HSO, Terpenes

Invoice Number: 2019-836C

Lot Number: T-22719-B3

Best By Date: 08/15/2020

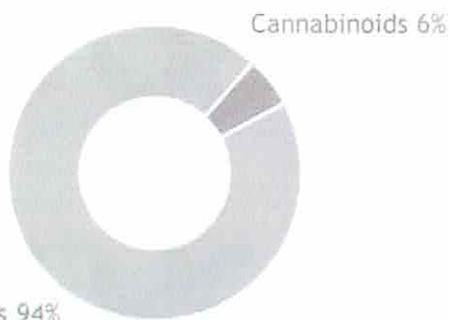
Product Code: T-1500-CO2-HSO-NA-RFT-30ml

Date of Analysis: 08/16/2019

Manufacture Date: 08/15/2019

Cannabinoid Potency - Expected CBD: 50.00 mg/mL ± 10%

% Total Cannabinoids

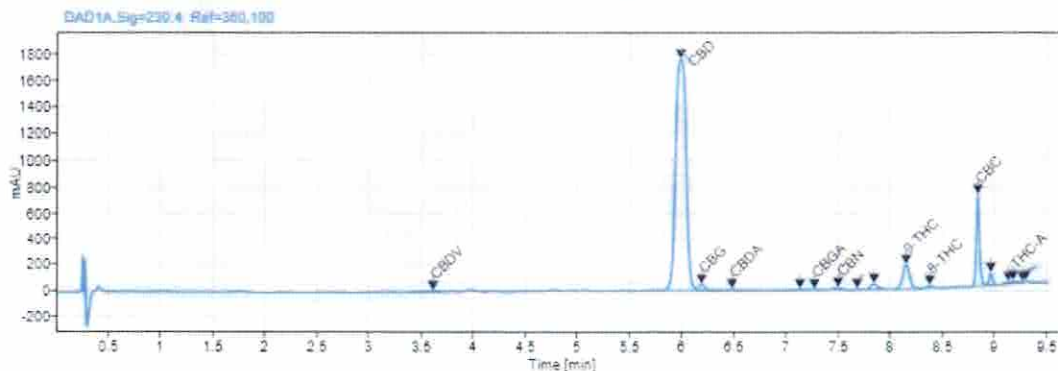


	mg/mL	%
CBD:	50.43 mg/mL	5.04 %
Total THC:	2.60 mg/mL	0.26 %
CBC	1.98 mg/mL	0.20 %
CBDa:	<0.05 mg/mL	<0.01 %
CBDV:	0.05 mg/mL	0.01 %
CBG:	0.47 mg/mL	0.05 %
CBGa:	<0.05 mg/mL	<0.01 %
CBN:	0.09 mg/mL	0.01 %
d8-THC:	0.31 mg/mL	0.03 %
d9-THC:	2.22 mg/mL	0.22 %
THCa:	0.06 mg/mL	0.01 %

*Total d9-THC and CBD are calculated taking into account the loss of a carboxyl group during decarboxylation.
The formulas are as follows: d9-THC = d9THC + (THCa * 0.877) CBD = CBD + (CBDa * 0.877)
**Any compounds with results listed as "ND" were not detected during analysis.

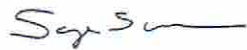
Density: 0.923 (kg/m³) Specific Gravity: 0.926

Chromatogram



Analyzed via HPLC Under These Conditions: Humidity: 46% Temperature: 76.3 °F

Analyzed By: 
R. SaBell
HPLC Analyst
08/18/2019

Approved By: 
S. Scarabosio
Analytical Laboratory Manager
08/18/2019



ISO 9001:2015 Certificate Number: US4293

Certificate of Analysis test results are based only on the analysis of the product listed in the "Product Description" of this form. Hammer Enterprises, LLC makes no claims as to the efficacy, safety, or other risks associated with any detected or non-detected compounds reported herein. All analyses conducted at Hammer Enterprises, LLC, is performed on well-maintained, quality instruments utilizing Good Laboratory Practices and validated methodology. This Certificate may not be reproduced except in full, without the written approval of Hammer Enterprises, LLC. **DISCLAIMER:** When reviewing certificate ensure watermark is complete and intact. Watermark will present as repeating HE logos diagonally across the entire page. The authenticity of this document is not guaranteed if there is evident modification, blocking, or alterations of the watermark.