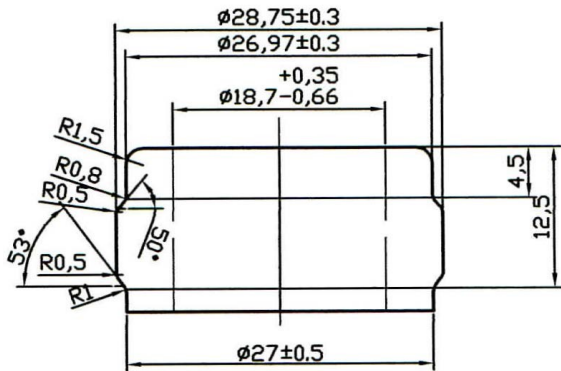




PIONEER PACKAGING

Seattle • Portland

PG-278 ANTIQUE GREEN



| | |
|-----------------|--------------------|
| Capacity | 750ml |
| Overflow | 770 ± 10 ml |
| Weight | 640 ± 25 g |
| Height | $294,8 \pm 1,8$ mm |
| Body ϕ | $87,7 \pm 1,6$ mm |
| Finish ϕ | $28,75 \pm 0,3$ mm |
| Bore ϕ | $18,7 \pm 0,66$ mm |
| Pallet Quantity | 88 cases |

