

Healthcare solutions guide

Your guide to improving efficiency and uptime in a healthcare environment.

Our solutions are positioned to equip your healthcare facility to:

- Protect your valuable and expensive medical equipment
- Increase the availability of your network
- Offer dynamic adaptable solutions for any environment

All so you can:

- Reduce risks
- Reliably predict performance
- Provide best-in-class care to your patients

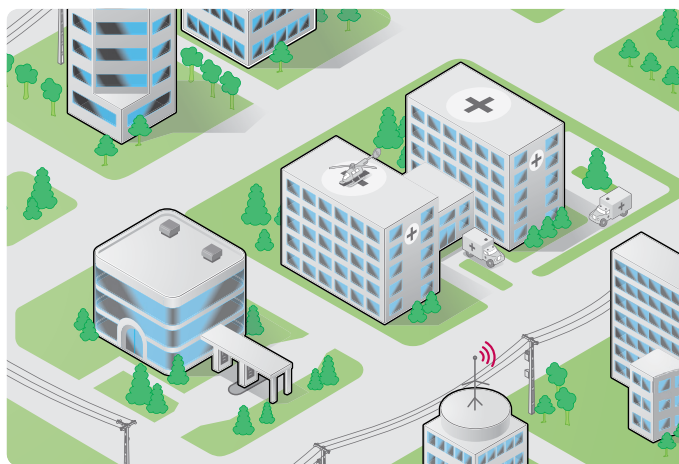
In today's technology-driven business landscape, downtime caused by a lack of Internet connectivity or utility power can be devastating, but downtime can be especially expensive for healthcare providers. Since 1995, energy usage by healthcare organizations has increased by 36%, making healthcare buildings the second most energy-intensive facilities in the world. This dramatic increase in healthcare energy consumption is primarily due to:

- Rising energy requirements of continuously advancing medical equipment
- Adoption of virtualized patient records
- Increasing demand to provide patients with care and comfort

As the elderly population increases, the amount of people requiring top-quality care will increase dramatically, and, unlike their predecessors, they are both comfortable with and reliant on technology. Therefore, they will expect the latest medical technology to be utilized in their healthcare solutions.

Another trend rapidly gaining traction that could potentially transform the healthcare industry is the Internet of Things (IoT) and "always-on" wearable technology. Wearable technology is being leveraged to collect constant and dynamic feedback on the health of the person wearing the device, thereby creating millions of extra data points that are being used to monitor and improve the health of patients. As technology continues to advance, these devices will become more affordable and more widespread. As these devices gain in popularity and market penetration, the importance of maintaining your network and attached equipment becomes exponentially greater, because now a power disruption doesn't just turn off the lights, it turns off your healthcare.

To ensure our customers' availability needs are met, APC™ by Schneider Electric™ has utilized decades of thought leadership and design expertise to develop innovative products that will keep your network and equipment running and operational during any power disruption. In addition to maintaining network connectivity during power outages, a UPS will protect attached devices from potential damage during power-related events such as voltage spikes, a reduction in input voltage, noise, or unstable frequencies. The included PowerChute™ Network Shutdown management software provides unattended graceful shutdown of network operating systems, giving you and your patients the peace of mind you deserve from anywhere in the world.



36%

There has been a 36% increase in healthcare energy consumption since 1995.

2nd

Healthcare buildings are the second most energy-intensive facilities in the world.

Triple

The number of people over 60 is expected to nearly triple by 2050.

3 to 5

The cost of providing healthcare to someone age 65 or older is three to five times higher than the cost for someone younger than 65.

APC by Schneider Electric healthcare solutions:

A portfolio of solutions to meet all your power protection needs



Back-UPS and Back-UPS Pro

High-performance UPS for premium power protection of computers and other electronics



Smart-UPS and Smart-UPS On-Line

High-density intelligent and efficient network power protection with scalable runtime. Ideal for servers, POS, routers, switches, hubs, and other devices



NetShelter™ racks and accessories

Universal IT enclosures with essential features to meet requirements of IT equipment in a variety of environments



UPS Management PowerChute and Network Management Card

Remote monitoring and management to allow safe system shutdown for up to 25 servers and workstations



Waiting room

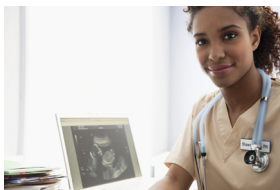
Closed circuit TV

Entry-level solution:

Back-UPS

Recommended solution:

Back-UPS Pro



Nursing station

Reception area, including computers, phones, and miscellaneous electronic equipment

Entry-level solution:

Back-UPS

Recommended solution:

Back-UPS Pro



Switch room/telecom closet

Electric panels and rack-based IT equipment

Entry-level solution:

Smart-UPS

Recommended solution:

Smart-UPS On-Line
NetShelter Racks and
Accessories



X-ray / imaging room

Houses medical imaging equipment

Recommended solution:

Smart-UPS On-Line
NetShelter racks and accessories



Exam room

Contains electronic equipment to provide patient assessments

Entry-level solution:

Smart-UPS

Recommended solution:

Smart-UPS On-Line