

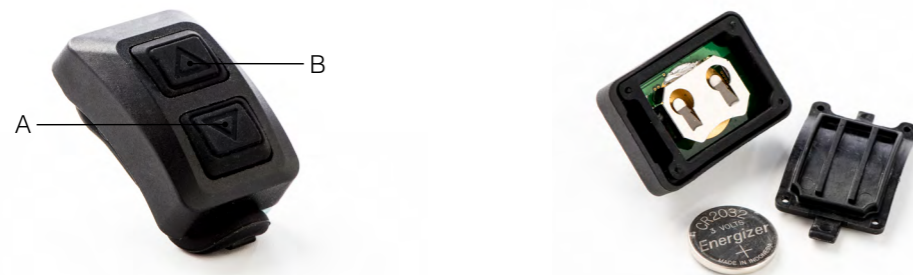
1 TX (Wireless Remote) Operation

The TX is a wireless remote that can be used to operate any compatible Gloworm Light. The TX can operate a light from a range of up to 5m (line of sight). However it cannot be used to programme a light. Programming must be completed using the button located locally on the light.

It features 2 buttons - Button A and Button B. The TX can control individual and groups of lights using one or both buttons either independently or synchronised (linked).

The TX is powered by a CR2032 button cell battery that can be replaced by removing the 4 small screws on the underside of the TX unit.

The unit is secured to the handlebar using the attached o-ring.



Important: The TX uses RF (Radio Frequency Technology) to control a light unit. RF signals can be affected/degraded by other devices transmitting an EMF (electromagnetic field). Such devices include but are not limited to: Other lights, wireless bike computers, ANT+ devices, bluetooth devices. Degradation of signal can vary, so be sure to check the TX pairing and control ability before use. A usual sign that a TX has been affected by EMF is that an occasionally a button click will be unresponsive and have no affect on the light. Usually a subsequent click of the button will have the desired affect.

2 Pairing the TX with Your Light

The TX can control one light or multiple lights in any combination. The TX has 2 buttons, **A** and **B** - In the most basic setup, one light is paired to one button, either **A** or **B**. Control of the light is exclusively using the paired button.

Multiple lights can be paired to the same button at the same time, resulting in lights operating simultaneously. Alternatively, buttons **A** and **B** can be paired to different lights, providing independent control of each light or lights.

Once a battery has been connected to a light it becomes ready to pair with the TX. Multiple lights that are ready to pair can be paired to a single button - allowing synchronised operation.

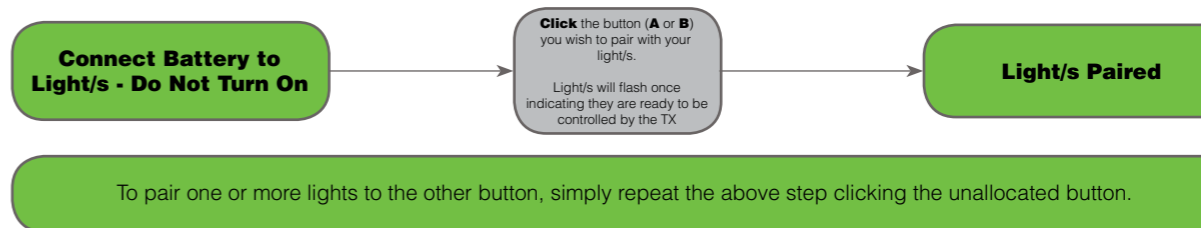
Subsequent lights can be added to an already paired button using the above Pairing Process. To synchronise the added light unit, press and hold the paired button until all lights are powered off - they are now synchronised.

A pair can only be broken by disconnecting the battery from the paired light.

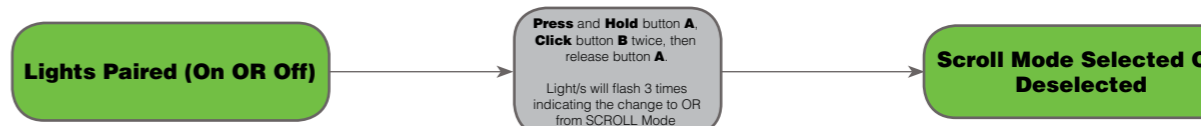
NOTE - A light/multiple lights can only be paired to one button on one remote at any time.

Lastly, single or multiple lights (paired to the same button) can also be controlled using both buttons - **SCROLL** Mode. In this configuration button **A** will increase light levels and button **B** will decrease them - i.e. from Low light level, button **A** can be pressed to increase to Med then High. Button **B** must then be used to decrease the light level to Med then Low.

3 Basic Pairing of Light/s to a Single Button



Changing to Scroll Mode



Scroll Mode can be selected at any time, no matter the number of lights connected. All lights paired with the remote will revert to the first light level and they will then be synchronised.

Either button can be used to turn off the light. The remote will remain in Scroll Mode until the mode is deselected. Disconnecting paired lights has no effect.

When deselecting Scroll Mode each light will revert to being controlled by the button through which it was originally paired. Each light will stay in the light level it was in whilst in Scroll Mode.

When in Scroll Mode, paired light/s can be started in either Trail Mode (3 light levels) or Commute Mode (2 light levels) - see below for instructions.

4 Starting the Light in Trail or Commute Mode

