

# MODEL: RC2163BFE

# REMOTELY OPERATED POOL/SPA CONTROL



RAINFROOF TYPE 3R ENCLOSURE SUITABLE FOR POOL/SPA APPLICATIONS.

SUITABLE FOR SWIMMING POOL/SPA APPLICATIONS AND FOR DIRECT CONNECTION TO A WET-NICHE OR NO-NICHE LUMINAIRE.

100 A, 120/240 V or 120/208 V single phase (three wire) AC, 60 Hz

The short circuit rating of this panel is 10000 RMS symmetrical amperes

FILTER PUMP: 1.5 HP, 120 V; 3 HP, 240 VAC Max. VALVE ACTUATOR: 24 V up to 3 actuators

**⚠ WARNING Risk of Fire or Electric Shock**

- Disconnect power at the circuit breaker(s) or disconnect switch(es) before installing or servicing.
- Installation and/or wiring must be in accordance with National Electrical Code (Section 68) and local electrical code requirements and is subject to approval by the local inspection authority.
- Use #14 - #6 AWG COPPER conductors ONLY, rated 75° C min., for branch circuit and #14 - #2 AWG for main lugs and neutral main.
- This control should not be connected to any equipment which would cause bodily injury or property damage should it be activated unexpectedly.
- Replace front panel covering terminals before powering ON.
- KEEP DOOR CLOSED AT ALL TIMES when not servicing.

**⚠ AVERTISSEMENT Risque d'incendie ou d'électrocution**

- L'installation et le câblage doivent être réalisés conformément au Code national de l'électricité (article 680)/Code canadien de l'électricité (section 68) et aux exigences des normes électriques régionales et sont soumis à l'approbation de l'organisme de contrôle local.
- Utiliser UNIQUEMENT des conducteurs en CUIVRE de 14 à 6 AWG, évalués à 75 °C min, pour le circuit de dérivation et de 14 à 2 AWG pour les cosses principales et le fil neutre.

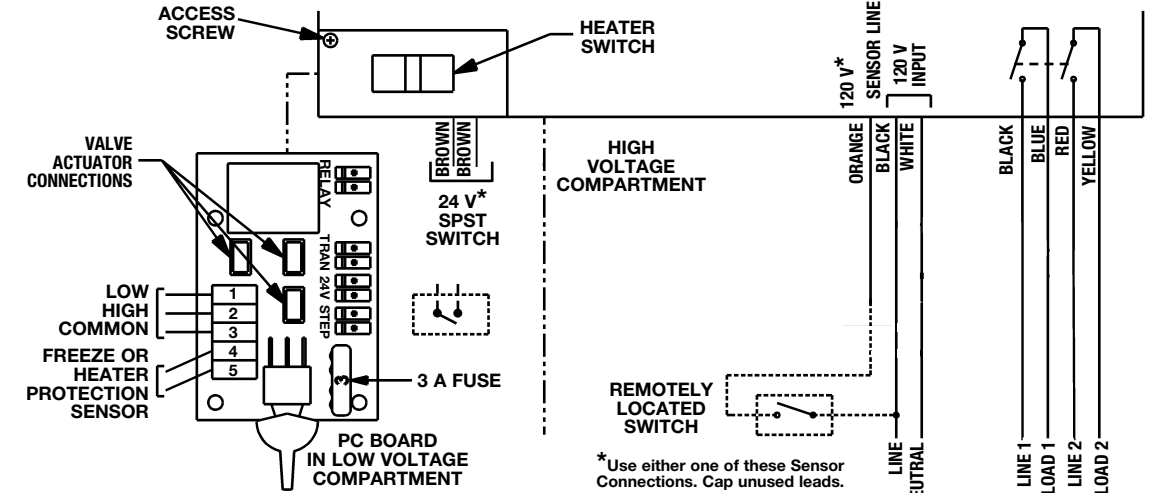
By activating the control from a remote location, the Filter Pump, Valves and Heater will function in the following sequences:

EQUIPMENT	POOL MODE SEQUENCE #1	SPA MODE SEQUENCE #2
Filter Pump Valves Heater	Timer Controlled Set to Pool Circulation Pool Temperature Setting	"ON" (continuous) Set to Spa Circulation Spa Temperature Setting

MANUFACTURER	SUITABLE LISTED BREAKERS					FILLER PLATE
	SINGLE	DOUBLE	TWIN	QUAD	GFCB	
CUTLER-HAMMER	BR	BR	BRD	BRD	GFCB	BRFP
MURRAY	MP-T	MP-T	MH-T	MH-T	MP-GT	LX100FP
SIEMENS	QP	QP	QT	QT	QPF	QF3
SQUARE D	HOM	HOM	HOMT	HOMT	HOM	HOMFP
GE (up to 40 A)	THQL	THQL	--	--	THQL-GF, GF1	THFILLER

WIRING INFORMATION - COPPER CONDUCTORS ONLY									
WIRE SIZE 75°C MIN INSULATION	SUPPLY CIRCUIT BREAKER RATING	TERMINAL TORQUE <sup>a</sup>		MAX MOTOR LOAD (CONTINUOUS DUTY)		GENERAL PURPOSE BRANCH CIRCUIT		MAX CURRENT CAPACITY	
		LINE AND NEUTRAL LUGS	NEUTRAL GROUND	120 V	240 V	BREAKER RATING	AMP		
14	15	35	20	1/2	1	15	12		
12-2	20	35	20	1	2	20	16		

<sup>a</sup>TORQUE CIRCUIT BREAKER LUGS TO VALUES SPECIFIED ON CIRCUIT BREAKERS



**HEATER CONNECTIONS:**  
**SINGLE THERMOSTAT:** Connect two 18 gauge wires in **SERIES** with heater toggle switch. Install **JUMPER** between terminals 1 and 2. Place heater switch in **ON** position.  
**DUAL THERMOSTAT:** Connect three 18 gauge wires in **PARALLEL** with heater toggle switch. Connect center post (COMMON) to term. 3, LOW to term. 1 and HIGH to term. 2. Place heater switch in **OFF** position.

**120 V Hook-Up:** Connect the two **BLACK** leads to **LINE**. Connect **WHITE** lead of Control and **WHITE** lead of **LOAD** to **NEUTRAL**. Connect **BLUE** lead to **LOAD**. **RED** and **YELLOW** leads are not used and must be insulated (capped). Valve actuator and heater connections are the same as the 240 V hook-up as shown.