



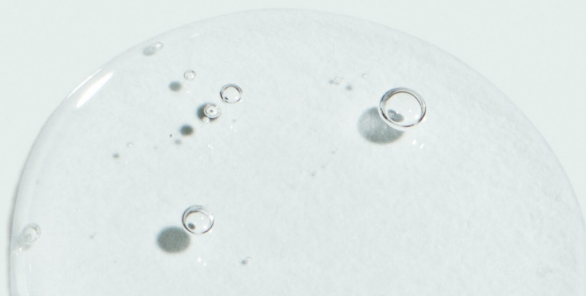
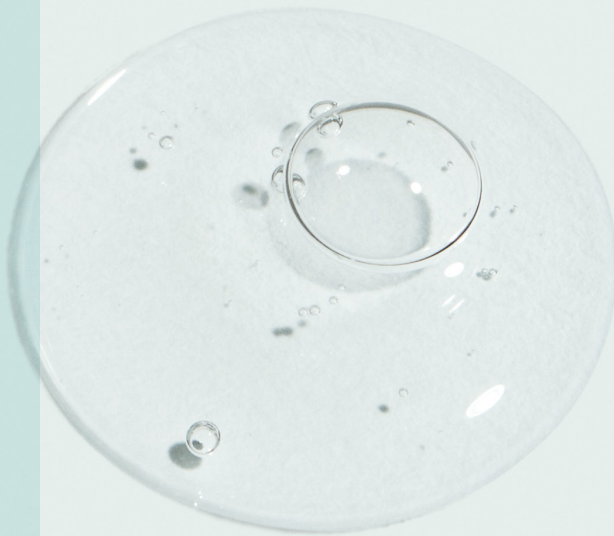
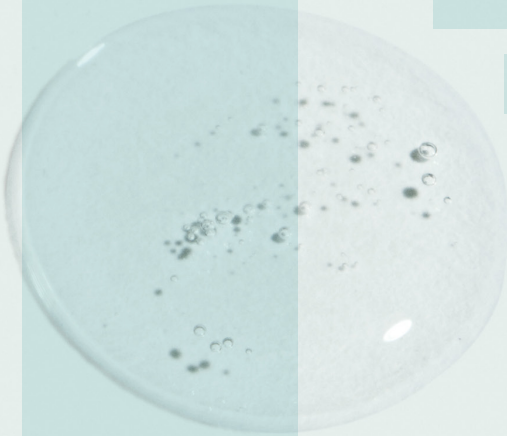
IMAGE

EDUCATION CENTER

02- FACIALS
24- TECHNOLOGY (MODALITIES)
36- BODY
40- MD



PROTOCOLS **FACIAL**



FALL INTO HYDRATION

FACIAL PROTOCOL



SKINCARE GOALS: **HYDRATION**

DESCRIPTION: We all need a little extra hydration in the fall and winter months. Designed for dull and depleted skin, this enzymatic treatment helps to replenish hydration while firming and brightening the skin's appearance. **SUGGESTED TREATMENT TIME:** 50 Minutes.

| | |
|---------------------------------------|---|
| 01- PRE-CLEANSE | Remove eye and lip makeup with I BEAUTY REFRESHING FACIAL WIPES . Apply VITAL C HYDRATING FACIAL CLEANSER and cleanse with wet fingertips for 1-2 minutes. Remove with sponges and tepid water or aromatherapy steam towels. |
| 02- CLEANSE | Apply ILUMA® INTENSE BRIGHTENING EXFOLIATING CLEANSER and cleanse with wet fingertips for 1-2 minutes. Remove with sponges and tepid water or aromatherapy steam towels. |
| 03- EXFOLIATE | Measure 1/8 oz. of ORMEDIC® LIFT SOLUTION into a medicine cup. Apply with an I SWAB in a circular motion beginning at forehead, moving to right cheek, left cheek, nose and perioral area. Massage for 1 minute. Solution may be left on the skin an additional 5-10 minutes. Remove thoroughly with sponges and cool water until client feels ZERO activity. |
| 04- EXTRACT (if necessary) | Dispense PRE-EXTRACTION EMULSION into a medicine cup and mix with an I SWAB or fan brush until product reaches a whipped consistency. Apply to areas of congestion and leave on for 7-10 minutes under steam. Remove with sponges and tepid water prior to performing extractions. |
| 05- MASQUE | Apply the MAX™ MASQUE combined with 1 full dropper of I ENHANCE of choice with an I SWAB or masque brush. Leave on skin for 5-10 minutes. Remove with sponges and tepid water. Optional: Perform arm and hand massage with VITAL C HYDRATING HAND AND BODY LOTION while masque sits. |
| 06- TARGET: HYDRATE | Customize by combining 1 full dropper of chosen I ENHANCE based on client's skin needs with the MAX SERUM and apply to entire treated area. |
| 07- EYE | Apply VITAL C HYDRATING EYE RECOVERY GEL to orbital area. |
| 08- PREVENTION+ | Apply a generous amount of PREVENTION+® DAILY HYDRATING MOISTURIZER SPF 30 to entire treated area. |
| 09- I CONCEAL | Apply I CONCEAL using FOUNDATION BRUSH to create a flawless finish. |
| 10- LIP | Apply ORMEDIC BALANCING LIP ENHANCEMENT COMPLEX to entire lip area. |
| 11- YANA | Offer client a complimentary sample of YANA® DAILY COLLAGEN SHOTS . |

BESPOKE HOLIDAY FACIAL PROTOCOL



SKINCARE GOALS: **GLOW**

DESCRIPTION: Exercise your artistic expertise and craft an experience that will brighten, oxygenate and nourish all skin types, allowing your clients to ring in the holiday season with luminous and glowing skin! This facial is packed with the gifts of organic extracts, nourishing antioxidants and vitamin C that will leave the skin looking smooth, plump and hydrated. **SUGGESTED TREATMENT TIME:** 50 Minutes.

| | |
|---------------------------------------|--|
| 01- PRE-CLEANSE | Remove eye and lip makeup with I BEAUTY REFRESHING FACIAL WIPES . Apply ORMEDIC® BALANCING FACIAL CLEANSER and cleanse with wet fingertips for 1-2 minutes. Remove with sponges and tepid water or aromatherapy steam towels. |
| 02- CLEANSE | Mix ORMEDIC BALANCING GEL POLISHER with the MAX™ FACIAL CLEANSER and cleanse with wet fingertips for 1-2 minutes. Remove with sponges and tepid water or aromatherapy steam towels. |
| 03- EXFOLIATE | Measure 1/8 oz. of ORMEDIC LIFT SOLUTION into a medicine cup. Apply with an I SWAB in a circular motion beginning at forehead, moving to right cheek, left cheek, nose and perioral area. Massage for 1 minute. Solution may be left on the skin an additional 5-10 minutes. Remove thoroughly with sponges and cool water until client feels ZERO activity. |
| 04- EXTRACT (if necessary) | Dispense PRE-EXTRACTION EMULSION into a medicine cup and mix with an I SWAB or fan brush until product reaches a whipped consistency. Apply to areas of congestion and leave on for 7-10 minutes under steam. Remove with sponges and tepid water prior to performing extractions. |
| 05- MASQUE | Pump 2 - 4 pumps of the O2 LIFT OXYGENATING FACIAL MASQUE into a medicine cup. Apply using an I SWAB to entire treatment area. Do not massage. Let sit until effervescent bubbling is completed (approx. 15 min). Remove with a warm towel. Optional: Perform arm and hand massage with VITAL C HYDRATING HAND AND BODY LOTION while masque sits. |
| 06- MASSAGE | Combine 1 full dropper of I ENHANCE HYALURONIC ACID FACIAL ENHANCER with 1-2 pumps of VITAL C HYDRATING FACIAL OIL and massage face, neck and décolletage for 5-10 minutes. Perform IMAGE facial massage. |
| 07- EYE | Apply VITAL C HYDRATING EYE RECOVERY GEL to orbital area. |
| 08- PREVENTION+ | Apply a generous amount of PREVENTION+® DAILY HYDRATING MOISTURIZER SPF 30 to entire treated area. |
| 09- I CONCEAL | Apply I CONCEAL using FOUNDATION BRUSH to create a flawless finish. |
| 10- LIP | Apply ORMEDIC BALANCING LIP ENHANCEMENT COMPLEX to entire lip area. |
| 11- YANA | Offer client a complimentary sample of YANA® DAILY COLLAGEN SHOTS . |

FIRMING NECK + DÉCOLLETAGE PROTOCOL



SKINCARE GOALS: **FIRMING**

DESCRIPTION: Don't let clients neglect the neck and chest! Perfect for "tech neck," this targeted treatment helps to fight the appearance of pigmentation, wrinkles and lax skin on the neck and décolletage.
SUGGESTED TREATMENT TIME: 25 - 50 Minutes.

| | |
|-------------------------|--|
| 01- PRE-CLEANSE | Apply the MAX™ FACIAL CLEANSER and cleanse the neck and décolletage with wet fingertips for 1-2 minutes. Remove with sponges and tepid water or aromatherapy steam towels. |
| 02- CLEANSE | Combine 5-7 shakes of the ILUMA® INTENSE BRIGHTENING EXFOLIATING POWDER with ILUMA INTENSE BRIGHTENING EXFOLIATING CLEANSER and cleanse the neck and décolletage with wet fingertips for 1-2 minutes. Remove with sponges and tepid water or aromatherapy steam towels. |
| 03- EXFOLIATE | Dispense MICRODERM EXFOLIATOR into a medicine cup. Apply with an I SWAB in a circular motion to entire area of treatment. Massage gently for 1-3 minutes, steam optional. Remove thoroughly with dry gauze followed by sponges and tepid water or aromatherapy steam towels. |
| 04- MASSAGE | Combine 1-2 full droppers of I ENHANCE HYALURONIC ACID FACIAL ENHANCER with 2-4 pumps of VITAL C HYDRATING FACIAL OIL and massage neck and décolletage for 5-10 minutes. |
| 05- MASQUE | Dispense the MAX MASQUE into a medicine cup or flexi-bowl. Apply with an I SWAB or masque brush to neck and décolletage. Massage for 2-5 minutes and remove after 10 minutes. Optional: Perform arm and hand massage with VITAL C HYDRATING HAND AND BODY LOTION while masque sits. |
| 06- TARGET: FIRM | Customize by combining 2 full droppers of chosen I ENHANCE based on client's skin needs with the MAX SERUM and apply to entire neck and décolletage. Apply the MAX NECK LIFT to neck and décolletage. Massage with soothing effleurage strokes. |
| 07- PREVENTION+ | Apply a generous amount of PREVENTION+® DAILY HYDRATING MOISTURIZER SPF 30 to entire treated area. |
| 08- LIP | Apply ORMEDIC® BALANCING LIP ENHANCEMENT COMPLEX to entire lip area. |
| 09- YANA | Offer client a complimentary sample of YANA DAILY COLLAGEN SHOTS . |

ANTIOXIDANT ANTI-AGING FACIAL PROTOCOL



SKINCARE GOALS: **BRIGHTEN**

DESCRIPTION: This comprehensive treatment combines our stabilized vitamin C blend with exfoliating agents, hydrating ingredients and plant cell extract technology to nourish dry, dehydrated skin.
SUGGESTED TREATMENT TIME: 50 Minutes.

| | |
|---------------------------------------|--|
| 01- PRE-CLEANSE | Remove eye and lip makeup with I BEAUTY REFRESHING FACIAL WIPES . Apply VITAL C HYDRATING FACIAL CLEANSER and cleanse with wet fingertips for 1-2 minutes. Remove with sponges and tepid water or aromatherapy steam towels. |
| 02- CLEANSE | Apply ILUMA® INTENSE BRIGHTENING EXFOLIATING CLEANSER and cleanse with wet fingertips for 1-2 minutes. Remove with sponges and tepid water or aromatherapy steam towels. |
| 03- EXFOLIATE | Measure 1/8 oz. of SIGNATURE FACELIFT SOLUTION into a medicine cup. Apply with an I SWAB in a circular motion beginning at forehead, moving to right cheek, left cheek, nose and perioral area. Massage for 1 minute. Solution may be left on the skin an additional 5-10 minutes. Remove thoroughly with sponges and cool water until client feels ZERO activity. |
| 04- EXTRACT (if necessary) | Dispense PRE-EXTRACTION EMULSION into a medicine cup and mix with an I SWAB or fan brush until product reaches a whipped consistency. Apply to areas of congestion and leave on for 7-10 minutes under steam. Remove with sponges and tepid water prior to performing extractions. |
| 05- MASSAGE | Combine 1 full dropper of I ENHANCE ANTIOXIDANT FACIAL ENHANCER with 1-2 pumps of VITAL C HYDRATING FACIAL OIL and massage face, neck and décolletage for 5-10 minutes. Perform IMAGE facial massage. |
| 06- MASQUE | Apply VITAL C HYDRATING ENZYME MASQUE combined with 1 full dropper of I ENHANCE of choice with an I SWAB or masque brush. Leave on skin for 5-10 minutes. Remove with sponges and tepid water. Optional: Perform arm and hand massage with VITAL C HYDRATING HAND AND BODY LOTION while masque sits. |
| 07- TARGET: BRIGHTEN | Mix VITAL C HYDRATING ANTI-AGING SERUM with one full dropper of ILUMA INTENSE FACIAL ILLUMINATOR and apply to entire treated area. |
| 08- EYE | Apply VITAL C HYDRATING EYE RECOVERY GEL to orbital area. |
| 09- PREVENTION+ | Apply a generous amount of PREVENTION+® DAILY HYDRATING MOISTURIZER SPF 30 to entire treated area. |
| 10- I CONCEAL | Apply I CONCEAL using FOUNDATION BRUSH to create a flawless finish. |
| 11- LIP | Apply ORMEDIC® BALANCING LIP ENHANCEMENT COMPLEX to entire lip area. |
| 12- YANA | Offer client a complimentary sample of YANA® DAILY COLLAGEN SHOTS . |

BE CLEAR PURIFYING FACIAL PROTOCOL



SKINCARE GOALS: **PURIFY**

DESCRIPTION: This comprehensive treatment helps to combat all types of breakouts with the power of targeted peptides, salicylic acid and soothing botanicals. Perfect for addressing oily skin and the appearance of blemishes. **SUGGESTED TREATMENT TIME:** 25 - 50 Minutes.

| | |
|---------------------------------------|---|
| 01- PRE-CLEANSE | Remove eye and lip makeup with I BEAUTY REFRESHING FACIAL WIPES . Apply ORMEDIC® BALANCING FACIAL CLEANSER and cleanse with wet fingertips for 1-2 minutes. Remove with sponges and tepid water or aromatherapy steam towels. |
| 02- CLEANSE | Apply CLEAR CELL SALICYLIC GEL CLEANSER and cleanse with wet fingertips for 1-2 minutes. Remove with sponges and tepid water or aromatherapy steam towels. |
| 03- EXFOLIATE | Dispense AGELESS TOTAL RESURFACING MASQUE into a medicine cup. Apply with an I SWAB in a circular motion to entire area of treatment. Massage gently for 1-3 minutes, steam optional. Remove thoroughly with sponges and tepid water or aromatherapy steam towels. |
| 04- EXTRACT (if necessary) | Dispense PRE-EXTRACTION EMULSION into a medicine cup and mix with an I SWAB or fan brush until product reaches a whipped consistency. Apply to areas of congestion and leave on for 7-10 minutes under steam. Remove with sponges and tepid water prior to performing extractions. |
| 05- MASQUE | Apply ORMEDIC BALANCING GEL MASQUE combined with 1 full dropper of I ENHANCE of choice with an I SWAB or masque brush. Leave on skin for 5-10 minutes. Remove with sponges and tepid water. Optional: Perform arm and hand massage with VITAL C HYDRATING HAND AND BODY LOTION while masque sits. |
| 06- TARGET: CLEAR | Customize by combining 1 full dropper of CLEAR CELL RESTORING SERUM with CLEAR CELL MEDICATED ACNE LOTION and apply to entire treated area. |
| 07- EYE | Apply VITAL C HYDRATING EYE RECOVERY GEL to orbital area. |
| 08- PREVENTION+ | Apply a generous amount of PREVENTION+® DAILY MATTE MOISTURIZER SPF 30 to entire treated area. |
| 09- I CONCEAL | Apply I CONCEAL using FOUNDATION BRUSH to create a flawless finish. |
| 10- LIP | Apply ORMEDIC BALANCING LIP ENHANCEMENT COMPLEX to entire lip area. |
| 11- YANA | Offer client a complimentary sample of YANA® DAILY COLLAGEN SHOTS . |

EYE TREATMENT PROTOCOL



SKINCARE GOALS: **BRIGHTEN EYES**

DESCRIPTION: This targeted treatment combines the brightening benefits of vitamin C with soothing botanical extracts and plant oils to quench delicate skin and deliver age-defying benefits to the eye area. **SUGGESTED TREATMENT TIME:** 30 Minutes.

| | |
|------------------------|---|
| 01- PRE-CLEANSE | Thoroughly remove eye makeup and mascara with I BEAUTY REFRESHING FACIAL WIPES . |
| 02- CLEANSE | Apply a small amount of VITAL C HYDRATING FACIAL CLEANSER and gently cleanse the orbital area for 1-2 minutes. Remove with sponges and tepid water. |
| 03- EXFOLIATE | Apply VITAL C HYDRATING ENZYME MASQUE to the orbital area with an I SWAB or masque brush. Massage 1-2 minutes. Apply a warm cotton compress and leave on an additional 3-5 minutes. Remove with sponges and tepid water. Optional: For additional lightening and brightening, add a small amount of ILUMA® INTENSE BRIGHTING EXFOLIATING POWDER to masque. |
| 04- MASSAGE | Combine 4-6 drops of VITAL C HYDRATING FACIAL OIL with 2-3 drops of I ENHANCE HYALURONIC ACID FACIAL ENHANCER and perform pressure point and lymph drainage massage for 5-10 minutes. |
| 05- MASQUE | Apply a generous amount of cooled ORMEDIC® BALANCING GEL MASQUE to the entire orbital area with an I SWAB or masque brush. Remove with sponges and tepid water after 10 minutes. |
| 06- TARGET | Apply appropriate IMAGE eye crème to the orbital area <ul style="list-style-type: none">• Aging: the MAX™ EYE CRÈME• Pigmentation: ILUMA INTENSE BRIGHTENING EYE CRÈME• Dry/Dehydrated: VITAL C HYDRATING EYE RECOVERY GEL• Sensitive/Puffy: ORMEDIC BALANCING EYE LIFT GEL |
| 07- I CONCEAL | Apply I CONCEAL using FOUNDATION BRUSH to create a flawless finish. |

FIRMING TRANSFORMATION

FACIAL PROTOCOL



SKINCARE GOALS: **FIRMING**

DESCRIPTION: This indulgent treatment helps all skin types reclaim the appearance of firmness, smoothness and elasticity. Advanced exfoliating agents, plant cell extracts and firming peptides work to promote rejuvenated, youthful-looking skin. **SUGGESTED TREATMENT TIME:** 50 Minutes.

| | |
|---------------------------------------|--|
| 01- PRE-CLEANSE | Remove eye and lip makeup with I BEAUTY REFRESHING FACIAL WIPES . Apply the MAX™ FACIAL CLEANSER and cleanse with wet fingertips for 1-2 minutes. Remove with sponges and tepid water or aromatherapy steam towels. |
| 02- CLEANSE | Combine 5-7 shakes of the ILUMA® INTENSE BRIGHTENING EXFOLIATING POWDER with ILUMA INTENSE BRIGHTENING EXFOLIATING CLEANSER and cleanse with wet fingertips for 1-2 minutes. Remove with sponges and tepid water or aromatherapy steam towels. |
| 03- EXFOLIATE | Dispense MICRODERM EXFOLIATOR into a medicine cup. Apply with an I SWAB in a circular motion to entire area of treatment. Massage gently for 1-3 minutes, steam optional. Remove thoroughly with dry gauze followed by sponges and tepid water or aromatherapy steam towels. |
| 04- EXTRACT (if necessary) | Dispense PRE-EXTRACTION EMULSION into a medicine cup and mix with an I SWAB or fan brush until product reaches a whipped consistency. Apply to areas of congestion and leave on for 7-10 minutes under steam. Remove with sponges and tepid water prior to performing extractions. |
| 05- MASSAGE | Combine 1 full dropper of I ENHANCE STEM CELL FACIAL ENHANCER with 1-2 pumps of VITAL C HYDRATING FACIAL OIL and massage face, neck and décolletage for 5-10 minutes. Perform IMAGE facial massage. |
| 06- MASQUE | Apply I MASK FIRMING TRANSFORMATION MASK with an I SWAB or masque brush. Leave on for 10 minutes. Remove with sponges and tepid water or aromatherapy steam towels. Optional: Perform arm and hand massage with VITAL C HYDRATING HAND AND BODY LOTION while masque sits. |
| 07- TARGET: FIRM | Customize by combining 1 full dropper of chosen I ENHANCE based on client's skin needs with the MAX™ SERUM and apply to entire treated area. |
| 08- EYE | Apply the MAX EYE CRÈME to orbital area. |
| 09- PREVENTION+ | Apply a generous amount of PREVENTION+® DAILY HYDRATING MOISTURIZER SPF 30 to entire treated area. |
| 10- I CONCEAL | Apply I CONCEAL using FOUNDATION BRUSH to create a flawless finish. |
| 11- LIP | Apply ORMEDIC® BALANCING LIP ENHANCEMENT COMPLEX to entire lip area. |
| 12- YANA | Offer client a complimentary sample of YANA® DAILY COLLAGEN SHOTS . |

GET GLOWING

W/ FACIAL ROLLER PROTOCOL



SKINCARE GOALS: **GLOW**

DESCRIPTION: Boost luminosity and promote radiant, healthy-looking skin. Perfect for all skin types, this results-driven treatment incorporates the sculpting benefits of a facial roller to deliver a visible lifting effect.
SUGGESTED TREATMENT TIME: 50 Minutes.

| | |
|-------------------------------|---|
| 01- PRE-CLEANSE | Remove eye and lip makeup with I BEAUTY REFRESHING FACIAL WIPES . Apply ILUMA® INTENSE BRIGHTENING EXFOLIATING CLEANSER and cleanse with wet fingertips for 1-2 minutes. Remove with sponges and tepid water or aromatherapy steam towels. |
| 02- CLEANSE | Apply ORMEDIC® BALANCING FACIAL CLEANSER and cleanse with wet fingertips for 1-2 minutes. Remove with sponges and tepid water or aromatherapy steam towels. |
| 03- EXFOLIATE | Dispense MICRODERM EXFOLIATOR into a medicine cup. Apply with an I SWAB in a circular motion to entire area of treatment. Massage gently for 1-3 minutes, steam optional. Remove thoroughly with dry gauze followed by sponges and tepid water or aromatherapy steam towels. |
| 04- EXTRACT (if necessary) | Dispense PRE-EXTRACTION EMULSION into a medicine cup and mix with an I SWAB or fan brush until product reaches a whipped consistency. Apply to areas of congestion and leave on for 7-10 minutes under steam. Remove with sponges and tepid water prior to performing extractions. |
| 05- ROLLER | <p>Combine 1 full dropper of I ENHANCE HYALURONIC ACID FACIAL ENHANCER with 1 full dropper of ILUMA INTENSE BRIGHTENING SERUM and apply to entire area of treatment.</p> <ol style="list-style-type: none"> Using the larger end of the roller, start at the base of the right ear, gently roll in a downward motion from ear to clavicle. Repeat 3x then move inward to the next section working across the front of neck to the center line. Move to the center of the chin and roll out horizontally towards the hair line. Repeat 3x. At the end of the third pass from the hairline, roll down the side of the face toward the clavicle 1x. Using the same pattern as above, start at the corner of the mouth and roll horizontally toward the ear. Repeat 3x. On the last roll, finish by moving the roller behind ear and continuing downward to the clavicle 1x. Using the smaller end of the roller, roll outward from the side of the nose to the temple. Repeat 3x. On the last roll, finish by rolling down the side of the face stopping behind the ear and continuing downward to the clavicle 1x. Gently roll from the center of the forehead above the eyebrows horizontally toward the hair line. Repeat 3x. On the last roll, finish by rolling down the side of the face stopping behind the ear and then continuing downward to the clavicle 1x. <p>Repeat steps 1-5 on the other side of the client's face.</p> |
| 06- MASQUE | Apply I MASK HYDROGEL SHEET MASK . Leave on 10 minutes. Remove mask and massage any remaining essence into the skin. Optional: Perform arm and hand massage with VITAL C HYDRATING HAND AND BODY LOTION while masque sits. |
| 07- EYE | Apply ORMEDIC BALANCING EYE LIFT GEL to orbital area. |
| 08- PREVENTION+ | Apply a generous amount of PREVENTION+® DAILY HYDRATING MOISTURIZER SPF 30 to entire treated area. |
| 09- I CONCEAL | Apply I CONCEAL using FOUNDATION BRUSH to create a flawless finish. |
| 10- LIP | Apply ORMEDIC BALANCING LIP ENHANCEMENT COMPLEX to entire lip area. |
| 11- YANA | Offer client a complimentary sample of YANA® DAILY COLLAGEN SHOTS . |

HOLIDAY BLISS & BUBBLE

FACIAL PROTOCOL



SKINCARE GOALS: **BRIGHTEN & OXYGENATE**

DESCRIPTION: Ring in the holiday season with luminous and glowing skin! This facial will brighten, oxygenate and nourish even the most winterized skin, leaving it smooth, plump and incredibly hydrated.
SUGGESTED TREATMENT TIME: 50 Minutes.

| | |
|-----------------------------------|--|
| 01- PRE-CLEANSE | Remove eye and lip makeup with I BEAUTY REFRESHING FACIAL WIPES . Apply the MAX™ FACIAL CLEANSER and cleanse with wet fingertips for 1-2 minutes. Remove with sponges and tepid water or aromatherapy steam towels. |
| 02- CLEANSE | Apply ILUMA® INTENSE BRIGHTENING EXFOLIATING CLEANSER and cleanse with wet fingertips for 1-2 minutes. Remove with sponges and tepid water or aromatherapy steam towels. |
| 03- EXFOLIATE | Measure 1/8 oz. of SIGNATURE FACELIFT SOLUTION into a medicine cup. Apply with an I SWAB in a circular motion beginning at forehead, moving to right cheek, left cheek, nose and perioral area. Massage for 1 minute. Solution may be left on the skin an additional 5-10 minutes. Remove thoroughly with sponges and cool water until client feels ZERO activity. |
| 04- EXTRACT (if necessary) | Dispense PRE-EXTRACTION EMULSION into a medicine cup and mix with an I SWAB or fan brush until product reaches a whipped consistency. Apply to areas of congestion and leave on for 7-10 minutes under steam. Remove with sponges and tepid water prior to performing extractions. |
| 05- MASQUE | Pump 2 - 4 pumps of the O2 LIFT OXYGENATING FACIAL MASQUE into a medicine cup. Apply using an I SWAB to entire treatment area. Do not massage. Let sit until effervescent bubbling is completed (approx. 15 min). Remove with a warm towel. Optional: Perform arm and hand massage with VITAL C HYDRATING HAND AND BODY LOTION while masque sits. |
| 06- MASSAGE | Combine 1 full dropper of I ENHANCE VITAMIN C FACIAL ENHANCER with 1-2 pumps of VITAL C HYDRATING FACIAL OIL and massage face, neck and décolletage for 5-10 minutes. Perform IMAGE facial massage. |
| 07- EYE | Apply ILUMA INTENSE BRIGHTENING EYE CREME to orbital area. |
| 08- PREVENTION+ | Apply a generous amount of PREVENTION+® DAILY HYDRATING MOISTURIZER SPF 30 to entire treated area. |
| 09- I CONCEAL | Apply I CONCEAL using FOUNDATION BRUSH to create a flawless finish. |
| 10- LIP | Apply ORMEDIC® BALANCING LIP ENHANCEMENT COMPLEX to entire lip area. |
| 11- YANA | Offer client a complimentary sample of YANA® DAILY COLLAGEN SHOTS . |

ILLUMINATE AND GLOW

FACIAL PROTOCOL



SKINCARE GOALS: **BOOST LUMINOSITY**

DESCRIPTION: Give skin a brightening boost with this antioxidant-rich facial. This results-driven luxury treatment helps to brighten, hydrate and reduce the appearance of fine lines in all skin types.
SUGGESTED TREATMENT TIME: 50 Minutes.

| | |
|---------------------------------------|--|
| 01- CLEANSE | Remove eye and lip makeup with I BEAUTY REFRESHING FACIAL WIPES . Apply ILUMA® INTENSE BRIGHTENING EXFOLIATING CLEANSER and cleanse with wet fingertips for 1-2 minutes. Remove with sponges and tepid water or aromatherapy steam towels. |
| 02- PREP | Saturate rough gauze with DEGREASING PREP SOLUTION . Squeeze out excess solution. Using firm pressure, swipe gauze in both horizontal and vertical directions over the entire area to be treated. |
| 03- EXFOLIATE | Measure 1/8 oz. of SIGNATURE FACELIFT SOLUTION into a medicine cup. Apply with an I SWAB in a circular motion beginning at forehead, moving to right cheek, left cheek, nose and perioral area. Massage for 1 minute. Solution may be left on the skin an additional 5-10 minutes. Remove thoroughly with sponges and cool water until client feels ZERO activity. |
| 04- EXTRACT (if necessary) | Dispense PRE-EXTRACTION EMULSION into a medicine cup and mix with an I SWAB or fan brush until product reaches a whipped consistency. Apply to areas of congestion and leave on for 7-10 minutes under steam. Remove with sponges and tepid water prior to performing extractions. |
| 05- MASQUE | Apply VITAL C HYDRATING ENZYME MASQUE combined with 1 full dropper of I ENHANCE of choice with an I SWAB or masque brush. Leave on skin for 5-10 minutes. Remove with sponges and tepid water. Optional: Perform arm and hand massage with VITAL C HYDRATING HAND AND BODY LOTION while masque sits. |
| 06- TARGET: ILLUMINATE | Customize by combining 1 full dropper of ILUMA INTENSE FACIAL ILLUMINATOR with ILUMA INTENSE BRIGHTENING SERUM and apply to entire treated area. |
| 07- EYE | Apply VITAL C HYDRATING EYE RECOVERY GEL to orbital area. |
| 08- PREVENTION+ | Apply a generous amount of PREVENTION+® DAILY HYDRATING MOISTURIZER SPF 30 to entire treated area. |
| 09- I CONCEAL | Apply I CONCEAL using FOUNDATION BRUSH to create a flawless finish. |
| 10- LIP | Apply ORMEDIC® BALANCING LIP ENHANCEMENT COMPLEX to entire lip area. |
| 11- YANA | Offer client a complimentary sample of YANA® DAILY COLLAGEN SHOTS . |

IMAGE MD® AGE LATER®

FACIAL PROTOCOL



SKINCARE GOALS: **RESTORE**

DESCRIPTION: This clinical flash treatment combines the latest innovations in advanced delivery technology with power exfoliators to correct visible signs of aging without drying the skin.
SUGGESTED TREATMENT TIME: 25-50 Minutes.

| | |
|---------------------------------------|--|
| 01- PRE-CLEANSE | Remove eye and lip makeup with I BEAUTY REFRESHING FACIAL WIPES . Apply ORMEDIC® BALANCING FACIAL CLEANSER and cleanse with wet fingertips for 1-2 minutes. Remove with sponges and tepid water or aromatherapy steam towels. |
| 02- CLEANSE | Apply IMAGE MD RESTORING FACIAL CLEANSER and cleanse with wet fingertips for 1-2 minutes. Remove with sponges and tepid water or aromatherapy steam towels. |
| 03- EXFOLIATE | Dispense MICRODERM EXFOLIATOR into a medicine cup. Apply with an I SWAB in a circular motion to entire area of treatment. Massage gently for 1-3 minutes, steam optional. Remove thoroughly with dry gauze followed by sponges and tepid water or aromatherapy steam towels. |
| 04- EXTRACT (if necessary) | Dispense PRE-EXTRACTION EMULSION into a medicine cup and mix with an I SWAB or fan brush until product reaches a whipped consistency. Apply to areas of congestion and leave on for 7-10 minutes under steam. Remove with sponges and tepid water prior to performing extractions. |
| 05- MASQUE | Apply I MASK PURIFYING PROBIOTIC MASK with an I SWAB or masque brush. Leave on skin for 5-10 minutes. Remove with sponges and tepid water. Optional: Perform arm and hand massage with VITAL C HYDRATING HAND AND BODY LOTION while masque sits. |
| 06- TARGET: RESTORE | Customize by combining 1 full dropper of I ENHANCE HYALURONIC ACID FACIAL ENHANCER with MD RESTORING YOUTH SERUM and apply to entire treated area. |
| 07- EYE | Apply IMAGE MD RESTORING COLLAGEN RECOVERY EYE GEL to orbital area. |
| 08- PREVENTION+ | Apply a generous amount of IMAGE MD RESTORING DAILY DEFENSE MOISTURIZER SPF 50 to entire treated area. |
| 09- I CONCEAL | Apply I CONCEAL using FOUNDATION BRUSH to create a flawless finish. |
| 10- LIP | Apply IMAGE MD RESTORING COLLAGEN LIP ENHANCER SPF 15 to entire lip area. |
| 11- YANA | Offer client a complimentary sample of YANA® DAILY COLLAGEN SHOTS . |

LIP TREATMENT PROTOCOL



SKINCARE GOALS: **HYDRATE**

DESCRIPTION: Exfoliate and soften dry lips with the pout-perfecting power of exfoliating natural enzymes and hyaluronic acid that gives a plump, hydrated appearance.
SUGGESTED TREATMENT TIME: 30 Minutes.

| | |
|--------------------------------|---|
| 01- PRE-CLEANSE | Thoroughly remove lipstick and lip liner with I BEAUTY REFRESHING FACIAL WIPES . (Pro-tip: for long wearing lipstick, apply ILUMA® INTENSE BRIGHTENING EXFOLIATING CLEANSER to wet fingertips and cleanse lips for 1-2 minutes. Remove with sponges and tepid water) |
| 02- CLEANSE | Apply a small amount of VITAL C HYDRATING FACIAL CLEANSER and gently cleanse the perioral area for 1-2 minutes. Remove with sponges and tepid water. |
| 03- EXFOLIATE | Apply VITAL C HYDRATING ENZYME MASQUE to the lips and perioral area with an I SWAB or masque brush. Massage 1-2 minutes. Apply a warm cotton compress and leave on an additional 3-5 minutes. Remove with sponges and tepid water. Optional: For additional lightening and brightening, add a small amount of ILUMA INTENSE BRIGHTENING EXFOLIATING POWDER to masque. (Pro-tip: for severely chapped lips, remove masque and buff lips with rough gauze) |
| 04- MASSAGE | Combine 4-6 drops of VITAL C HYDRATING FACIAL OIL with 2-3 drops of I ENHANCE STEM CELL FACIAL ENHANCER and massage for 5-10 minutes. |
| 05- MASQUE | Apply 2-3 drops of I ENHANCE HYALURONIC ACID directly to lips. Apply ORMEDIC® BALANCING GEL MASQUE to the lips and perioral area with an I SWAB or masque brush. Remove with sponges and tepid water after 10 minutes. |
| 06- TARGET: HYDRATE | Combine 2 drops of I ENHANCE HYALURONIC ACID with 2 drops of VITAL C HYDRATING FACIAL OIL and apply directly to lips. Gently massage until fully absorbed. |
| 07- PROTECT | Apply IMAGE MD® RESTORING POST TREATMENT COLLAGEN LIP ENHANCEMENT SPF 15 to entire lip area. |

ORMEDIC[®] DELUXE

NOURISHING FACIAL



SKINCARE GOALS: **NOURISH**

DESCRIPTION: This deluxe facial will brighten, hydrate and nourish the skin as relaxing massage techniques transport your clients to a state of bliss. With skin-nurturing organic botanicals, antioxidants and aloe vera, this gentle treatment works to refine and nourish all skin types.

SUGGESTED TREATMENT TIME: 80 Minutes.



| | |
|---------------------------------------|--|
| 01- PRE-CLEANSE | Remove eye and lip makeup with I BEAUTY REFRESHING FACIAL WIPES . |
| 02- CLEANSE | Apply ORMEDIC BALANCING FACIAL CLEANSER and cleanse with wet fingertips for 1-2 minutes. Remove with sponges and tepid water or aromatherapy steam towels. |
| 03- EXFOLIATE | <p>Dispense ORMEDIC BALANCING GEL POLISHER into a medicine cup. Apply with an I SWAB in a circular motion to entire area of treatment. DO NOT REMOVE. Apply VITAL C HYDRATING ENZYME MASQUE directly on top of ORMEDIC BALANCING GEL POLISHER and massage for 5-7 minutes. Remove thoroughly with sponges and tepid water or aromatherapy steam towels.</p> <p>Measure 1/8 oz. of ORMEDIC LIFT™ SOLUTION into a medicine cup. Apply with an I SWAB in a circular motion beginning at forehead, moving to right cheek, left cheek, nose, and perioral area. Massage for 1 minute. Solution may be left on the skin an additional 5-10 minutes. Remove thoroughly with sponges and cool water until client feels ZERO activity.</p> |
| 04- EXTRACT (if necessary) | Dispense PRE-EXTRACTION EMULSION into a medicine cup and mix with an I SWAB or fan brush until product reaches a whipped consistency. Apply to areas of congestion and leave on for 7-10 minutes under steam. Remove with sponges and tepid water prior to performing extractions. |
| 05- MASSAGE | Combine 1 full dropper of I ENHANCE HYALURONIC ACID FACIAL ENHANCER with 1-2 pumps of ORMEDIC BALANCING BIOPEPTIDE CRÈME and massage face, neck and décolletage for 5-10 minutes. Perform IMAGE facial massage. |
| 06- MASQUE | Apply ORMEDIC BALANCING GEL MASQUE combined with 1 full dropper of I ENHANCE of choice with an I SWAB or masque brush. Leave on skin for 5-10 minutes. Remove with sponges and tepid water. Optional: Perform arm and hand massage with VITAL C HYDRATING HAND AND BODY LOTION while masque sits. |
| 07- TARGET: NOURISH | Customize by combining 1 full dropper of I ENHANCE VITAMIN C FACIAL ENHANCER with ORMEDIC BALANCING ANTIOXIDANT SERUM and apply to entire treated area. |
| 08- EYE | Apply ORMEDIC BALANCING EYE LIFT GEL to orbital area. |
| 09- PREVENTION+ | Apply a generous amount of PREVENTION+® DAILY HYDRATING MOISTURIZER SPF 30 to entire treated area. |
| 10- I CONCEAL | Apply I CONCEAL using FOUNDATION BRUSH to create a flawless finish. |
| 11- LIP | Apply ORMEDIC BALANCING LIP ENHANCEMENT COMPLEX to entire lip area. |
| 12- YANA | Offer client a complimentary sample of YANA® DAILY COLLAGEN SHOTS . |

ORMEDIC[®] RESTORING FACIAL



SKINCARE GOALS: **RESTORE**

DESCRIPTION: Restore skin's resilience and gently sweep away impurities. With soothing aloe vera, ultra-hydrating hyaluronic acid and organic botanicals, this gentle facial is perfect to help balance, brighten and nourish all skin types.

SUGGESTED TREATMENT TIME: 50 Minutes.



| | |
|---------------------------------------|---|
| 01- PRE-CLEANSE | Remove eye and lip makeup with I BEAUTY REFRESHING FACIAL WIPES . |
| 02- CLEANSE | Apply ORMEDIC BALANCING FACIAL CLEANSER and cleanse with wet fingertips for 1-2 minutes. Remove with sponges and tepid water or aromatherapy steam towels. |
| 03- EXFOLIATE | Dispense ORMEDIC BALANCING GEL POLISHER into a medicine cup. Apply with an I SWAB in a circular motion to entire area of treatment. Massage gently for 1-3 minutes, steam optional. Remove thoroughly with sponges and tepid water or aromatherapy steam towels. |
| 04- EXTRACT (if necessary) | Dispense PRE-EXTRACTION EMULSION into a medicine cup and mix with an I SWAB or fan brush until product reaches a whipped consistency. Apply to areas of congestion and leave on for 7-10 minutes under steam. Remove with sponges and tepid water prior to performing extractions. |
| 05- MASSAGE | Combine 1 full dropper of I ENHANCE HYALURONIC ACID FACIAL ENHANCER with 1-2 pumps of ORMEDIC BALANCING BIOPEPTIDE CRÈME and massage face, neck, and décolletage for 5-10 minutes. Perform IMAGE facial massage. |
| 06- MASQUE | Apply ORMEDIC BALANCING GEL MASQUE combined with 1 full dropper of I ENHANCE of choice with an I SWAB or masque brush. Leave on skin for 5-10 minutes. Remove with sponges and tepid water. Optional: Perform arm and hand massage with VITAL C HYDRATING HAND AND BODY LOTION while masque sits. |
| 07- TARGET: RESTORE | Customize by combining 1 full dropper of I ENHANCE ANTIOXIDANT FACIAL ENHANCER with ORMEDIC BALANCING ANTIOXIDANT SERUM and apply to entire treated area. |
| 08- EYE | Apply ORMEDIC BALANCING EYE LIFT GEL to orbital area. |
| 09- PREVENTION+ | Apply a generous amount of PREVENTION+[®] DAILY HYDRATING MOISTURIZER SPF 30 to entire treated area. |
| 10- I CONCEAL | Apply I CONCEAL using FOUNDATION BRUSH to create a flawless finish. |
| 11- LIP | Apply ORMEDIC BALANCING LIP ENHANCEMENT COMPLEX to entire lip area. |
| 12- YANA | Offer client a complimentary sample of YANA[®] DAILY COLLAGEN SHOTS . |

ORMEDIC[®] FLASH FACIAL



SKINCARE GOALS: **BALANCE**

DESCRIPTION: This 30-minute speed treatment polishes away impurities and boosts radiance for clients on the go! This luxurious flash facial is designed to help your clients Age Later[®] the natural way, with certified organic ingredients and antioxidants. Perfect for all skin types.

SUGGESTED TREATMENT TIME: 30 Minutes.

| | |
|--------------------------------|--|
| 01- PRE-CLEANSE | Remove eye and lip makeup with I BEAUTY REFRESHING FACIAL WIPES . |
| 02- CLEANSE | Apply ORMEDIC BALANCING FACIAL CLEANSER and cleanse with wet fingertips for 1-2 minutes. Remove with sponges and tepid water or aromatherapy steam towels. |
| 03- EXFOLIATE | Dispense ORMEDIC BALANCING GEL POLISHER into a medicine cup. Apply with an I SWAB in a circular motion to entire area of treatment. Massage gently for 1-3 minutes, steam optional. Remove thoroughly with sponges and tepid water or aromatherapy steam towels. |
| 04- TARGET: BALANCE | Customize by combining 1 full dropper of I ENHANCE ANTIOXIDANT FACIAL ENHANCER with ORMEDIC BALANCING ANTIOXIDANT SERUM and apply to entire treated area. |
| 05- EYE | Apply ORMEDIC BALANCING EYE LIFT GEL to orbital area. |
| 06- PREVENTION+ | Apply a generous amount of PREVENTION+[®] HYDRATING MOISTURIZER SPF 30 to entire treated area. |
| 07- I CONCEAL | Apply I CONCEAL using FOUNDATION BRUSH to create a flawless finish. |
| 08- LIP | Apply ORMEDIC BALANCING LIP ENHANCEMENT COMPLEX to entire lip area. |
| 09- YANA | Offer client a complimentary sample of YANA[®] DAILY COLLAGEN SHOTS . |

THE GLOW GETTER

FACIAL PROTOCOL



SKINCARE GOALS: **SMOOTH & GLOW**

DESCRIPTION: Glowing skin is in—and this flash facial will deliver the radiance your clients are after. Harness the power of brightening botanicals, tranexamic acid, vitamin C and antioxidants to boost luminosity and improve skin clarity. Perfect for all skin types, this luxurious treatment will hydrate, soften and promote radiant, healthy-looking skin. **SUGGESTED TREATMENT TIME:** 25 Minutes.

| | |
|----------------------------|--|
| 01- PRE-CLEANSE | Remove eye and lip makeup with I BEAUTY REFRESHING FACIAL WIPES . Apply ORMEDIC® BALANCING FACIAL CLEANSER and cleanse with wet fingertips for 1-2 minutes. Remove with sponges and tepid water or aromatherapy steam towels. |
| 02- CLEANSE | Apply ILUMA® INTENSE BRIGHTENING EXFOLATING CLEANSER and cleanse with wet fingertips for 1-2 minutes. Remove with sponges and tepid water or aromatherapy steam towels. |
| 03- EXFOLIATE | Dispense MICRODERM EXFOLIATOR into a medicine cup. Apply with an I SWAB in a circular motion to entire area of treatment. Massage gently for 1-3 minutes, steam optional. Remove thoroughly with dry gauze followed by sponges and tepid water or aromatherapy steam towels. |
| 04- TARGET: HYDRATE | Customize by combining 1 full dropper of I ENHANCE HYALURONIC ACID FACIAL ENHANCER with VITAL C HYDRATING ANTI-AGING SERUM and apply to entire treated area. |
| 05- MASQUE | Apply I MASK HYDROGEL SHEET MASK . Leave on 10 minutes. Remove mask and massage any remaining essence into the skin. Optional: Perform arm and hand massage with VITAL C HYDRATING HAND AND BODY LOTION while masque sits. |
| 06- TARGET: SMOOTH | Dispense the MAX™ WRINKLE SMOOTHER into a medicine cup and apply with an I SWAB to forehead and around orbital area. |
| 07- TARGET: GLOW | Customize by combining 1 full dropper of ILUMA INTENSE FACIAL ILLUMINATOR with ILUMA INTENSE BRIGHTENING SERUM and apply to entire treated area. |
| 08- EYE | Apply VITAL C HYDRATING EYE RECOVERY GEL to orbital area |
| 09- PREVENTION+ | Apply a generous amount of PREVENTION+® DAILY HYDRATING MOISTURIZER SPF 30 to entire treated area. |
| 10- I CONCEAL | Apply I CONCEAL using FOUNDATION BRUSH to create a flawless finish. |
| 11- LIP | Apply ORMEDIC BALANCING LIP ENHANCEMENT COMPLEX to entire lip area. |
| 12- YANA | Offer client a complimentary sample of YANA® DAILY COLLAGEN SHOTS . |

RADIANCE REFRESH

FACIAL PROTOCOL



SKINCARE GOALS: **BRIGHTEN**

DESCRIPTION: Help clients spring into nourished, radiant skin! This treatment is perfect for all skin types and helps to brighten, hydrate and diminish lingering signs of dullness.
SUGGESTED TREATMENT TIME: 25 Minutes.

| | |
|---------------------------------|--|
| 01- PRE-CLEANSE | Remove eye and lip makeup with I BEAUTY REFRESHING FACIAL WIPES . Apply ORMEDIC® BALANCING FACIAL CLEANSER and cleanse with wet fingertips for 1-2 minutes. Remove with sponges and tepid water or aromatherapy steam towels. |
| 02- CLEANSE | Apply the MAX™ FACIAL CLEANSER and cleanse with wet fingertips for 1-2 minutes. Remove with sponges and tepid water or aromatherapy steam towels. |
| 03- PREP | Saturate rough gauze with DEGREASING PREP SOLUTION . Squeeze out excess solution. Using firm pressure, swipe gauze in both horizontal and vertical directions over the entire area to be treated. |
| 04- EXFOLIATE | Measure 1/8 oz. of ORMEDIC LIFT SOLUTION into a medicine cup. Apply with an I SWAB in a circular motion beginning at forehead, moving to right cheek, left cheek, nose and perioral area. Massage for 1 minute. Solution may be left on the skin an additional 5-10 minutes. Remove thoroughly with sponges and cool water until client feels ZERO activity. |
| 05- TARGET: BRIGHTEN | Customize by combining 1 full dropper of I ENHANCE STEM CELL FACIAL ENHANCER with VITAL C HYDRATING ANTI-AGING SERUM and apply to entire treated area. |
| 06- EYE | Apply ILUMA® INTENSE BRIGHTENING EYE CRÈME to orbital area. |
| 07- PREVENTION+ | Apply a generous amount of PREVENTION+® DAILY MATTE MOISTURIZER SPF 30 to entire treated area. |
| 08- I CONCEAL | Apply I CONCEAL using FOUNDATION BRUSH to create a flawless finish. |
| 09- LIP | Apply ORMEDIC BALANCING LIP ENHANCEMENT COMPLEX to entire lip area. |
| 10- YANA | Offer client a complimentary sample of YANA® DAILY COLLAGEN SHOTS . |

THE MAX™ CONTOURING FACIAL PROTOCOL



SKINCARE GOALS: **SMOOTH & CONTOUR**

DESCRIPTION: Visibly sculpt, tighten and improve skin tone with this indulgent facial packed with peptides and plant extracts. Invite your clients on a journey to experience the sophisticated sensations of refreshing water-based ingredients and comforting oils that melt onto the skin.

SUGGESTED TREATMENT TIME: 50 Minutes.



| | |
|-----------------------------------|---|
| 01- PRE-CLEANSE | Remove eye and lip makeup with I BEAUTY REFRESHING FACIAL WIPES . Apply ILUMA® INTENSE BRIGHTENING EXFOLIATING CLEANSER and cleanse with wet fingertips for 1-2 minutes. Remove with sponges and tepid water or aromatherapy steam towels. |
| 02- CLEANSE | Apply the MAX FACIAL CLEANSER and cleanse with wet fingertips for 1-2 minutes. Remove with sponges and tepid water or aromatherapy steam towels. |
| 03- EXFOLIATE | Dispense ORMEDIC® BALANCING GEL POLISHER into a medicine cup or flexi-bowl. Apply with an I SWAB or masque brush to entire treated area. Wet fingertips and gently massage for 3-5 minutes. Do not remove. Dispense VITAL C HYDRATING ENZYME MASQUE into a medicine cup or flexi-bowl. Apply with an I SWAB or masque brush to entire treated area. Massage for 3-5 minutes. Remove with sponges and tepid water. |
| 04- EXTRACT (if necessary) | Dispense PRE-EXTRACTION EMULSION into a medicine cup and mix with an I SWAB or fan brush until product reaches a whipped consistency. Apply to areas of congestion and leave on for 7-10 minutes under steam. Remove with sponges and tepid water prior to performing extractions. |
| 05- NOURISH | Customize by combining 1 full dropper of chosen I ENHANCE based on client's skin needs with the MAX SERUM and apply to entire treated area. |
| 06- MASQUE | Apply I MASK HYDROGEL SHEET MASK . Leave on 10 minutes. Remove mask and massage any remaining essence into the skin. Optional: Perform arm and hand massage with VITAL C HYDRATING HAND AND BODY LOTION while masque sits. |
| 07- TARGET: SMOOTH | Dispense the MAX WRINKLE SMOOTHER into a medicine cup and apply with an I SWAB to forehead and around orbital area. |
| 08- TARGET: CONTOUR | Massage the MAX CONTOUR GEL CRÈME into lower portion of face, including cheeks, jawline and perioral area. Apply in upward strokes. |
| 09- EYE | Apply the MAX EYE CRÈME to orbital area. |
| 10- PREVENTION+ | Apply a generous amount of PREVENTION+® DAILY ULTIMATE MOISTURIZER SPF 50 to entire treated area. |
| 11- I CONCEAL | Apply I CONCEAL using FOUNDATION BRUSH to create a flawless finish. |
| 12- LIP | Apply ORMEDIC BALANCING LIP ENHANCEMENT COMPLEX to entire lip area. |
| 13- YANA | Offer client a complimentary sample of YANA® DAILY COLLAGEN SHOTS . |

THE MAX™ DELUXE

CONTOURING FACIAL PROTOCOL



SKINCARE GOALS: **SCULPT & TIGHTEN**

DESCRIPTION: Create an elevated experience for your clients with this facial powered by clinically proven products from the MAX collection. Featuring microburst technology and high-performance ingredients to help restore the appearance of facial volume and firmness, this deluxe version of the MAX™ Contouring Facial Protocol includes added facial massage with a hyaluronic acid booster perfect for dry, dehydrated and dull skin.

SUGGESTED TREATMENT TIME: 80 Minutes.



| | |
|---------------------------------------|---|
| 01- PRE-CLEANSE | Remove eye and lip makeup with I BEAUTY REFRESHING FACIAL WIPES . Apply ILUMA® INTENSE BRIGHTENING EXFOLIATING CLEANSER and cleanse with wet fingertips for 1-2 minutes. Remove with sponges and tepid water or aromatherapy steam towels. |
| 02- CLEANSE | Apply the MAX FACIAL CLEANSER and cleanse with wet fingertips for 1-2 minutes. Remove with sponges and tepid water or aromatherapy steam towels. |
| 03- EXFOLIATE | Dispense ORMEDIC® BALANCING GEL POLISHER into a medicine cup or flexi-bowl. Apply with an I SWAB or masque brush to entire treated area. Wet fingertips and gently massage for 3-5 minutes. Do not remove. Dispense VITAL C HYDRATING ENZYME MASQUE into a medicine cup or flexi-bowl. Apply with an I SWAB or masque brush to entire treated area. Massage for 3-5 minutes. Remove with sponges and tepid water. |
| 04- EXTRACT (if necessary) | Dispense PRE-EXTRACTION EMULSION into a medicine cup and mix with an I SWAB or fan brush until product reaches a whipped consistency. Apply to areas of congestion and leave on for 7-10 minutes under steam. Remove with sponges and tepid water prior to performing extractions. |
| 05- MASSAGE | Combine 1 full dropper of HYALURONIC FACIAL ENHANCER with 1-2 pumps of VITAL C HYDRATING FACIAL OIL and massage face, neck and décolletage for 5-10 minutes. Perform IMAGE facial massage. |
| 06- MASQUE | Dispense the MAX MASQUE into a medicine cup or flexi-bowl. Apply with an I SWAB or masque brush to face, neck and décolletage. Massage for 2-5 minutes and remove after 10 minutes. Optional: Perform arm and hand massage with VITAL C HYDRATING HAND AND BODY LOTION while masque sits. |
| 07- TARGET: FIRM | Customize by combining 2 full droppers of chosen I ENHANCE based on client's skin needs with the MAX SERUM and apply to entire face, neck and décolletage. Apply the MAX NECK LIFT to neck and décolletage. Massage with soothing effleurage strokes. |
| 08- TARGET: SMOOTH | Dispense the MAX WRINKLE SMOOTHER into a medicine cup and apply with an I SWAB to forehead and around orbital area. |
| 09- TARGET: CONTOUR | Massage the MAX CONTOUR GEL CRÈME into lower portion of face, including cheeks, jawline and perioral area. Apply in upward strokes. |
| 10- EYE | Apply the MAX EYE CREME to orbital area. |
| 11- PREVENTION+ | Apply a generous amount of PREVENTION+® DAILY ULTIMATE MOISTURIZER SPF 50 to entire treated area. |
| 12- I CONCEAL | Apply I CONCEAL using FOUNDATION BRUSH to create a flawless finish. |
| 13- LIP | Apply ORMEDIC BALANCING LIP ENHANCEMENT COMPLEX to entire lip area. |
| 14- YANA | Offer client a complimentary sample of YANA® DAILY COLLAGEN SHOTS . |

THE MAX™ FLASH

FACIAL PROTOCOL



SKINCARE GOALS: **SMOOTH & CONTOUR**

DESCRIPTION: This flash facial offers the benefits of the MAX™ Contouring Facial Protocol in a fraction of the time. Nourishing oil microdroplets, targeted peptides and plant cell extracts help to lift and firm the skin's appearance in under 30 minutes. **SUGGESTED TREATMENT TIME:** 25 Minutes.

| | |
|---------------------------------------|---|
| 01- PRE-CLEANSE | Remove eye and lip makeup with I BEAUTY REFRESHING FACIAL WIPES . Apply ILUMA® INTENSE BRIGHTENING EXFOLIATING CLEANSER and cleanse with wet fingertips for 1-2 minutes. Remove with sponges and tepid water or aromatherapy steam towels. |
| 02- CLEANSE | Apply the MAX FACIAL CLEANSER and cleanse with wet fingertips for 1-2 minutes. Remove with sponges and tepid water or aromatherapy steam towels. |
| 03- EXFOLIATE | Dispense ORMEDIC® BALANCING GEL POLISHER into a medicine cup or flexi-bowl. Apply with an I SWAB or masque brush to entire treated area. Wet fingertips and gently massage for 2-3 minutes. Do not remove. Dispense VITAL C HYDRATING ENZYME MASQUE into a medicine cup or flexi-bowl. Apply with an I SWAB or masque brush to entire treated area. Massage for 2-3 minutes. Remove with sponges and tepid water. |
| 04- EXTRACT (if necessary) | Dispense PRE-EXTRACTION EMULSION into a medicine cup and mix with an I SWAB or fan brush until product reaches a whipped consistency. Apply to areas of congestion and leave on for 7-10 minutes under steam. Remove with sponges and tepid water prior to performing extractions. |
| 05- TARGET: FIRM | Customize by combining 1 full dropper of chosen I ENHANCE based on client's skin needs with the MAX SERUM and apply to entire treated area. |
| 06- MASQUE | Apply I MASK HYDROGEL SHEET MASK . Leave on 10 minutes. Remove mask and massage any remaining essence into the skin. Optional: Perform arm and hand massage with VITAL C HYDRATING HAND AND BODY LOTION while masque sits. |
| 07- TARGET: SMOOTH | Dispense the MAX WRINKLE SMOOTHER into a medicine cup and apply with an I SWAB to forehead and around orbital area. |
| 08- TARGET: CONTOUR | Massage the MAX CONTOUR GEL CRÈME into lower portion of face, including cheeks, jawline and perioral area. Apply in upward strokes. |
| 09- EYE | Apply the MAX EYE CRÈME to orbital area. |
| 10- PREVENTION+ | Apply a generous amount of PREVENTION+® DAILY ULTIMATE MOISTURIZER SPF 50 to entire treated area. |
| 11- I CONCEAL | Apply I CONCEAL using FOUNDATION BRUSH to create a flawless finish. |
| 12- LIP | Apply ORMEDIC BALANCING LIP ENHANCEMENT COMPLEX to entire lip area. |
| 13- YANA | Offer client a complimentary sample of YANA® DAILY COLLAGEN SHOTS . |

WINTER RADIANCE LIFT

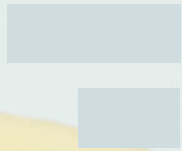
FACIAL PROTOCOL



SKINCARE GOALS: **RADIANCE**

DESCRIPTION: Deliver a winter radiance boost with this illuminating, brightening facial. The perfect treatment to help address lingering summer sun damage and begin the holiday season with brilliance and glow!
SUGGESTED TREATMENT TIME: 50 Minutes.

| | |
|------------------------|---|
| 01- PRE-CLEANSE | Remove eye and lip makeup with I BEAUTY REFRESHING FACIAL WIPES . Apply ILUMA® INTENSE BRIGHTENING EXFOLIATING CLEANSER and cleanse with wet fingertips for 1-2 minutes. Remove with sponges and tepid water or aromatherapy steam towels. |
| 02- CLEANSE | Apply AGELESS TOTAL FACIAL CLEANSER and cleanse with wet fingertips for 1-2 minutes. Remove with sponges and tepid water or aromatherapy steam towels. |
| 03- PREP | Saturate rough gauze with DEGREASING PREP SOLUTION . Squeeze out excess solution. Using firm pressure, swipe gauze in both horizontal and vertical directions over the entire area to be treated. |
| 04- EXFOLIATE | Measure 1/8 oz. of LIGHTENING LIFT SOLUTION into a medicine cup. Apply with an I SWAB in a circular motion beginning at forehead, moving to right cheek, left cheek, nose and perioral area. Massage for 1 minute. Solution may be left on the skin up to 10 minutes. Remove thoroughly with sponges and cool water until client feels ZERO activity. |
| 05- MASQUE | Apply I MASK HYDROGEL SHEET MASK . Leave on 10 minutes. Remove mask and massage any remaining essence into the skin. Optional: Perform arm and hand massage with VITAL C HYDRATING HAND AND BODY LOTION while masque sits. |
| 06- EYE | Apply ILUMA INTENSE BRIGHTENING EYE CRÈME to orbital area. |
| 07- PREVENTION+ | Apply a generous amount of PREVENTION+® DAILY ULTIMATE MOISTURIZER SPF 50 to entire treated area. |
| 08- I CONCEAL | Apply I CONCEAL using FOUNDATION BRUSH to create a flawless finish. |
| 09- LIP | Apply ORMEDIC® BALANCING LIP ENHANCEMENT COMPLEX to entire lip area. |
| 10- YANA | Offer client a complimentary sample of YANA® DAILY COLLAGEN SHOTS . |



PROTOCOLS **MODALITIES**



RED LIGHT LED PROTOCOL



SKINCARE GOALS: **ANTI-AGING**

DESCRIPTION: This treatment combines red LED light therapy with age-defying products from IMAGE to target the appearance of fine lines, wrinkles and visible signs of aging. Features bt-accent LED technology.

TREATMENT TIME: 50 Minutes **TECHNOLOGY USED:** bt-accent LED

| | |
|-----------------------------------|---|
| 01- PRE-CLEANSE | Remove eye and lip makeup with I BEAUTY REFRESHING FACIAL WIPES . Apply ORMEDIC® BALANCING FACIAL CLEANSER and cleanse with wet fingertips for 1-2 minutes. Remove with sponges and tepid water or aromatherapy steam towels. |
| 02- CLEANSE | Apply AGELESS TOTAL FACIAL CLEANSER and cleanse with wet fingertips for 1-2 minutes. Remove with sponges and tepid water or aromatherapy steam towels. |
| 03- EXFOLIATE | Dispense MICRODERM EXFOLIATOR into a medicine cup or flexi-bowl. Apply with an I SWAB in a circular motion to entire area of treatment. Massage gently for 1-3 minutes. Remove with dry gauze followed by sponges and tepid water or aromatherapy steam towels. |
| 04- BRIGHTEN | Combine 1 full dropper of I ENHANCE KOJIC ACID FACIAL ENHANCER with ORMEDIC BALANCING ANTIOXIDANT SERUM and apply to entire treated area. Do not remove. |
| 05- QUENCH | Place protective eye shields and goggles over client's eyes. Wear protective eye wear according to manufacturer's guidelines. Dispense ORMEDIC BALANCING GEL MASQUE into a medicine cup or flexi-bowl. Apply with an I SWAB to entire area of treatment. |
| 06- TARGET: ANTI-AGING | Press power <ul style="list-style-type: none"> • Light color: RED • Rate: Constant • Time: 15 minutes Position LED over face and press start. Upon completion of time, remove excess masque with sponges and tepid water or aromatherapy steam towels. |
| 07- NOURISH | Combine 1 full dropper of I ENHANCE STEM CELL FACIAL ENHANCER with the MAX™ SERUM and apply to entire treated area. |
| 08- SMOOTH | Dispense the MAX WRINKLE SMOOTHER into a medicine cup and apply with an I SWAB to forehead and around orbital area. Perform light tapotement. |
| 09- CONTOUR | Massage the MAX CONTOUR GEL CRÈME into lower portion of face, including cheeks, jawline and perioral area. Apply in upward strokes. |
| 10- EYE | Apply the MAX EYE CRÈME to orbital area. |
| 11- PREVENTION+ | Apply a generous amount of PREVENTION+ DAILY ULTIMATE PROTECTION MOISTURIZER SPF 50 to entire treated area. |
| 12- I CONCEAL | Apply I CONCEAL using FOUNDATION BRUSH to create a flawless finish. |
| 13- LIP | Apply ORMEDIC BALANCING LIP ENHANCEMENT COMPLEX to entire lip area. |
| 14- YANA | Offer client a complimentary sample of YANA® DAILY COLLAGEN SHOTS . |
| 15- POST TREATMENT | Provide IMAGE POST TREATMENT KIT to client and review post treatment care. |

BLUE LIGHT LED PROTOCOL



SKINCARE GOALS: **CLARIFY**

DESCRIPTION: With the benefits of blue LED light therapy and targeted shine-minimizing products from IMAGE, this treatment helps promote clear, healthy-looking skin. Features bt-accent LED technology.

TREATMENT TIME: 50 Minutes **TECHNOLOGY USED:** bt-accent LED

| | |
|-----------------------------------|--|
| 01- PRE-CLEANSE | Remove eye and lip makeup with I BEAUTY REFRESHING FACIAL WIPES . Apply ORMEDIC® BALANCING FACIAL CLEANSER and cleanse with wet fingertips for 1-2 minutes. Remove with sponges and tepid water or aromatherapy steam towels. |
| 02- CLEANSE | Apply CLEAR CELL SALICYLIC GEL CLEANSER and cleanse with wet fingertips for 1-2 minutes. Remove with sponges and tepid water or aromatherapy steam towels. |
| 03- EXTRACT | Dispense PRE-EXTRACTION EMULSION into a medicine cup and mix with an I SWAB or fan brush until product reaches a whipped consistency. Apply to areas of congestion and leave on for 7-10 minutes under steam. Remove with sponges and tepid water prior to performing extractions. After extracting, wipe areas of extraction with 1-2 CLEAR CELL SALICYLIC CLARIFYING PADS . |
| 04- HYDRATE | Combine 1 full dropper of I ENHANCE HYALURONIC ACID FACIAL ENHANCER with CLEAR CELL RESTORING SERUM and apply to entire treated area. Do not remove. |
| 05- QUENCH | Place protective eye shields and goggles over client's eyes. Wear protective eye wear according to manufacturer's guidelines. Dispense ORMEDIC BALANCING GEL MASQUE into a medicine cup or flexi-bowl. Apply with an I SWAB to entire area of treatment. |
| 06- TARGET: ANTI-AGING | Press power <ul style="list-style-type: none"> • Light color: BLUE • Rate: Constant • Time: 15 minutes Position LED over face and press start. Upon completion of time, remove excess masque with sponges and tepid water or aromatherapy steam towels. |
| 07- SPOT TREAT | Apply CLEAR CELL MEDICATED ACNE LOTION to any inflamed lesions. Activity is normal and will subside. |
| 08- NOURISH | Combine 1 full dropper of I ENHANCE KOJIC ACID FACIAL ENHANCER with CLEAR CELL MATTIFYING MOISTURIZER and apply to entire treated area. |
| 09- EYE | Apply ORMEDIC BALANCING EYE LIFT GEL to orbital area. |
| 10- PREVENTION+ | Apply a generous amount of PREVENTION+® DAILY MATTE MOISTURIZER SPF 30 to entire treated area. |
| 11- I CONCEAL | Apply I CONCEAL using FOUNDATION BRUSH to create a flawless finish. |
| 12- LIP | Apply ORMEDIC BALANCING LIP ENHANCEMENT COMPLEX to entire lip area. |
| 13- YANA | Offer client a complimentary sample of YANA® DAILY COLLAGEN SHOTS . |
| 14- POST TREATMENT | Provide IMAGE POST TREATMENT KIT to client and review post treatment care. |

RED & BLUE LIGHT LED PROTOCOL



SKINCARE GOALS: **ANTI-AGING**

DESCRIPTION: With a combination of both blue and red LED light therapies along with IMAGE professional products, this treatment is ideal for combination and aging skin. Features bt-accent LED technology.

TREATMENT TIME: 50 Minutes **TECHNOLOGY USED:** bt-accent LED

| | |
|-----------------------------------|--|
| 01- PRE-CLEANSE | Remove eye and lip makeup with I BEAUTY REFRESHING FACIAL WIPES . Apply ILUMA® INTENSE BRIGHTENING EXFOLIATING CLEANSER and cleanse with wet fingertips for 1-2 minutes. Remove with sponges and tepid water or aromatherapy steam towels. |
| 02- CLEANSE | Apply AGELESS TOTAL FACIAL CLEANSER and cleanse with wet fingertips for 1-2 minutes. Remove with sponges and tepid water or aromatherapy steam towels. |
| 03- EXFOLIATE | Dispense ORMEDIC® BALANCING GEL POLISHER into a medicine cup or flexi-bowl. Apply with an I SWAB to entire area of treatment. Wet fingertips and gently massage for 3-5 minutes. Remove with sponges and tepid water or aromatherapy steam towels. |
| 04- EXTRACT | Dispense PRE-EXTRACTION EMULSION into a medicine cup and mix with an I SWAB or fan brush until product reaches a whipped consistency. Apply to areas of congestion and leave on for 7-10 minutes under steam. Remove with sponges and tepid water prior to performing extractions. After extracting, wipe areas of extraction with 1-2 CLEAR CELL SALICYLIC CLARIFYING PADS . |
| 05- HYDRATE | Combine 1 full dropper of I ENHANCE HYALURONIC ACID FACIAL ENHANCER with VITAL C HYDRATING ANTI-AGING SERUM and apply to entire treated area. Do not remove. |
| 06- QUENCH | Place protective eye shields and goggles over client's eyes. Wear protective eye wear according to manufacturer's guidelines. Dispense ORMEDIC BALANCING GEL MASQUE into a medicine cup or flexi-bowl. Apply with an I SWAB to entire area of treatment. |
| 07- TARGET: ANTI-AGING | Press power <ul style="list-style-type: none"> • Light color: COMBINATION • Rate: Constant • Time: 15 minutes Position LED over face and press start. Upon completion of time, remove excess masque with sponges and tepid water or aromatherapy steam towels. |
| 08- SPOT TREAT | Apply CLEAR CELL MEDICATED ACNE LOTION to any inflamed lesions. Activity is normal and will subside. |
| 09- NOURISH | Combine 1 full dropper of I ENHANCE ANTIOXIDANT FACIAL ENHANCER with the MAX™ SERUM and apply to entire treated area. |
| 10- EYE | Apply ILUMA INTENSE BRIGHTENING EYE CRÈME to orbital area. |
| 11- PREVENTION+ | Apply a generous amount of PREVENTION+® DAILY TINTED MOISTURIZER SPF 30 to entire treated area. |
| 12- I CONCEAL | Apply I CONCEAL using FOUNDATION BRUSH to create a flawless finish. |
| 13- LIP | Apply ORMEDIC BALANCING LIP ENHANCEMENT COMPLEX to entire lip area. |
| 14- YANA | Offer client a complimentary sample of YANA® DAILY COLLAGEN SHOTS . |
| 15- POST TREATMENT | Provide IMAGE POST TREATMENT KIT to client and review post treatment care. |

DERMAPLANING

PROTOCOL FOR AGING SKIN



SKINCARE GOALS: **ANTI-AGING**

DESCRIPTION: This protocol combines the exfoliating benefits of dermaplaning with the clinical advancements of IMAGE products that address visible signs of aging like fine lines, wrinkles and uneven texture. Features dermaplaning tool. **TREATMENT TIME:** 50 Minutes

| | |
|----------------------|---|
| 01- PRE-CLEANSE | Remove eye and lip makeup with I BEAUTY REFRESHING FACIAL WIPES . Apply ILUMA® INTENSE BRIGHTENING EXFOLIATING CLEANSER and cleanse with wet fingertips for 1-2 minutes. Remove with sponges and tepid water or aromatherapy steam towels. |
| 02- CLEANSE | Apply the MAX™ FACIAL CLEANSER and cleanse with wet fingertips for 1-2 minutes. Remove with sponges and tepid water or aromatherapy steam towels. |
| 03- PREP | Saturate rough gauze with DEGREASING PREP SOLUTION . Squeeze out any excess solution. Using firm pressure, swipe gauze in both horizontal and vertical directions over the entire area of treatment. |
| 04- DERMAPLANE | Apply one full pump of VITAL C HYDRATING FACIAL OIL to entire area of treatment. Hold blade at a 45-degree angle. Clean blade periodically throughout treatment by wiping with a clean, dry cloth. SECTION 1: Forehead-hold skin taut and work blade vertically in 1-2" sections, moving from left side to right side of forehead. Include top of nose. SECTION 2: Left cheek-hold skin taut and work blade horizontally in 1-2" sections, beginning from top of cheekbone to ear. Include side of nose. Last pass should begin at corner of the mouth. SECTION 3: Right cheek-repeat steps above. SECTION 4: Chin and perioral area-hold skin taut and work blade vertically in 1-2" sections, moving from left side to right side of jaw and chin area. Ask client to open mouth when working around mouth area. |
| 05- EXFOLIATE | Apply 3-4 full pumps of the O2 LIFT ENZYMATIC FACIAL PEEL to entire face, using an I SWAB . Perform relaxing effleurage massage movements for 5-7 minutes until the product liquefies and begins to gommage. Continue to massage and exfoliate the skin for an additional 5-7 minutes. Total massage time 10-15 minutes. Remove with sponges and cool water or a tepid towel. |
| 06- MASQUE | Apply the MAX MASQUE combined with 1 full dropper of I ENHANCE of choice with an I SWAB or masque brush. Leave on skin for 5-10 minutes. Remove with sponges and tepid water. Optional: Perform arm and hand massage with VITAL C HYDRATING HAND AND BODY LOTION while masque sits. |
| 07- TARGET: BRIGHTEN | Customize by combining 1 full dropper of chosen I ENHANCE based on client's skin needs with ILUMA INTENSE BRIGHTENING SERUM and apply to entire treated area. |
| 08- EYE | Apply the MAX EYE CRÈME to orbital area. |
| 09- PREVENTION+ | Apply a generous amount of PREVENTION+® DAILY ULTIMATE PROTECTION MOISTURIZER SPF 50 to entire treated area. |
| 10- I CONCEAL | Apply I CONCEAL using FOUNDATION BRUSH to create a flawless finish. |
| 11- LIP | Apply ORMEDIC® BALANCING LIP ENHANCEMENT COMPLEX to entire lip area. |
| 12- YANA | Offer client a complimentary sample of YANA® DAILY COLLAGEN SHOTS . |
| 13- POST TREATMENT | Provide IMAGE POST TREATMENT KIT to client and review post treatment care. |

DERMAPLANING PROTOCOL FOR DRY SKIN



SKINCARE GOALS: **HYDRATE**

DESCRIPTION: Designed for skin that's dry, dehydrated or lacking moisture, this hydrating treatment combines dermaplaning exfoliation with the nourishing benefits of botanical oils and fruit enzymes. Features dermaplaning tool.
TREATMENT TIME: 50 Minutes

| | |
|------------------------|---|
| 01- PRE-CLEANSE | Remove eye and lip makeup with I BEAUTY REFRESHING FACIAL WIPES . Apply ILUMA® INTENSE BRIGHTENING EXFOLIATING CLEANSER and cleanse with wet fingertips for 1-2 minutes. Remove with sponges and tepid water or aromatherapy steam towels. |
| 02- CLEANSE | Apply the MAX™ FACIAL CLEANSER and cleanse with wet fingertips for 1-2 minutes. Remove with sponges and tepid water or aromatherapy steam towels. |
| 03- PREP | Saturate rough gauze with DEGREASING PREP SOLUTION . Squeeze out any excess solution. Using firm pressure, swipe gauze in both horizontal and vertical directions over the entire area of treatment. |
| 04- DERMAPLANE | Apply one full pump of VITAL C HYDRATING FACIAL OIL to entire area of treatment. Hold blade at a 45-degree angle. Clean blade periodically throughout treatment by wiping with a clean, dry cloth. SECTION 1: Forehead-hold skin taut and work blade vertically in 1-2" sections, moving from left side to right side of forehead. Include top of nose. SECTION 2: Left cheek-hold skin taut and work blade horizontally in 1-2" sections, beginning from top of cheekbone to ear. Include side of nose. Last pass should begin at corner of the mouth. SECTION 3: Right cheek-repeat steps above. SECTION 4: Chin and perioral area-hold skin taut and work blade vertically in 1-2" sections, moving from left side to right side of jaw and chin area. Ask client to open mouth when working around mouth area. |
| 05- EXFOLIATE | Measure 1/8 oz. of VITAL C HYDRATING ENZYME MASQUE into a medicine cup. Apply with an I SWAB in a circular motion to entire area of treatment. Massage gently for 3-5 minutes, leaving on a total of 10 minutes. Remove with sponges and tepid water. |
| 06- MASQUE | Apply I MASK HYDROGEL SHEET MASK . Leave on 10 minutes. Remove mask and massage any remaining essence into the skin. Optional: Perform arm and hand massage with VITAL C HYDRATING HAND AND BODY LOTION while mask sits. |
| 07- TARGET: HYDRATE | Customize by combining 1 full dropper of chosen I ENHANCE based on client's skin needs with VITAL C HYDRATING ANTI-AGING SERUM and apply to entire treated area. |
| 08- EYE | Apply VITAL C HYDRATING EYE RECOVERY GEL to orbital area. |
| 09- PREVENTION+ | Apply a generous amount of PREVENTION+® DAILY HYDRATING MOISTURIZER SPF 30 to entire treated area. |
| 10- I CONCEAL | Apply I CONCEAL using FOUNDATION BRUSH to create a flawless finish. |
| 11- LIP | Apply ORMEDIC® BALANCING LIP ENHANCEMENT COMPLEX to entire lip area. |
| 12- YANA | Offer client a complimentary sample of YANA® DAILY COLLAGEN SHOTS . |
| 13- POST TREATMENT | Provide IMAGE POST TREATMENT KIT to client and review post treatment care. |

DERMAPLANING

PROTOCOL FOR OILY SKIN



SKINCARE GOALS: **MATTIFY**

DESCRIPTION: This treatment combines dermaplaning to remove dead skin with IMAGE products designed to exfoliate and minimize the appearance of excess shine. Features dermaplaning tool.

TREATMENT TIME: 50 Minutes

| | |
|---------------------|---|
| 01- PRE-CLEANSE | Remove eye and lip makeup with I BEAUTY REFRESHING FACIAL WIPES . Apply ILUMA® INTENSE BRIGHTENING EXFOLIATING CLEANSER and cleanse with wet fingertips for 1-2 minutes. Remove with sponges and tepid water or aromatherapy steam towels. |
| 02- CLEANSE | Apply CLEAR CELL SALICYLIC GEL CLEANSER and cleanse with wet fingertips for 1-2 minutes. Remove with sponges and tepid water or aromatherapy steam towels. |
| 03- PREP | Saturate rough gauze with DEGREASING PREP SOLUTION . Squeeze out any excess solution. Using firm pressure, swipe gauze in both horizontal and vertical directions over the entire area of treatment. |
| 04- DERMAPLANE | Apply one full pump of VITAL C HYDRATING FACIAL OIL to entire area of treatment. Hold blade at a 45-degree angle. Clean blade periodically throughout treatment by wiping with a clean, dry cloth. SECTION 1: Forehead-hold skin taut and work blade vertically in 1-2" sections, moving from left side to right side of forehead. Include top of nose. SECTION 2: Left cheek-hold skin taut and work blade horizontally in 1-2" sections, beginning from top of cheekbone to ear. Include side of nose. Last pass should begin at corner of the mouth. SECTION 3: Right cheek-repeat steps above. SECTION 4: Chin and perioral area-hold skin taut and work blade vertically in 1-2" sections, moving from left side to right side of jaw and chin area. Ask client to open mouth when working around mouth area. |
| 05- EXFOLIATE | Measure 1/8 oz. of ORMEDIC® LIFT SOLUTION into a medicine cup. Apply with an I SWAB in a circular motion beginning at forehead, moving to right cheek, left cheek, nose and perioral area. Massage into skin for 1 minute. Solution may be left on the skin 5-10 minutes. Remove thoroughly with sponges and cool water until client feels ZERO activity. |
| 06- MASQUE | Apply I MASK PURIFYING PROBIOTIC MASK combined with 1 full dropper of I ENHANCE of choice with an I SWAB or masque brush. Leave on skin 5-10 minutes. Remove with sponges and tepid water. Optional: Perform arm and hand massage with VITAL C HYDRATING HAND AND BODY LOTION while mask sits. |
| 07- TARGET: MATTIFY | Customize by combining 1 full dropper of chosen I ENHANCE based on client's skin needs with CLEAR CELL RESTORING SERUM and apply to entire treated area. |
| 08- EYE | Apply VITAL C HYDRATING EYE RECOVERY GEL to orbital area. |
| 09- PREVENTION+ | Apply a generous amount of PREVENTION+® DAILY MATTE MOISTURIZER SPF 30 to entire treated area. |
| 10- I CONCEAL | Apply I CONCEAL using FOUNDATION BRUSH to create a flawless finish. |
| 11- LIP | Apply ORMEDIC BALANCING LIP ENHANCEMENT COMPLEX to entire lip area. |
| 12- YANA | Offer client a complimentary sample of YANA® DAILY COLLAGEN SHOTS . |
| 13- POST TREATMENT | Provide IMAGE POST TREATMENT KIT to client and review post treatment care. |

DERMAPLANING

PROTOCOL FOR PIGMENTATION



SKINCARE GOALS: **BRIGHTEN**

DESCRIPTION: This treatment features exfoliation with dermaplaning, plus the clinical advancements of IMAGE products formulated for dark spots, age spots, dullness and uneven skin tone. Features dermaplaning tool.

TREATMENT TIME: 50 Minutes

| | |
|-----------------------------|---|
| 01- PRE-CLEANSE | Remove eye and lip makeup with I BEAUTY REFRESHING FACIAL WIPES . Apply ILUMA® INTENSE BRIGHTENING EXFOLIATING CLEANSER and cleanse with wet fingertips for 1-2 minutes. Remove with sponges and tepid water or aromatherapy steam towels. |
| 02- CLEANSE | Apply AGELESS TOTAL FACIAL CLEANSER and cleanse with wet fingertips for 1-2 minutes. Remove with sponges and tepid water or aromatherapy steam towels. |
| 03- PREP | Saturate rough gauze with DEGREASING PREP SOLUTION . Squeeze out any excess solution. Using firm pressure, swipe gauze in both horizontal and vertical directions over the entire area of treatment. |
| 04- DERMAPLANE | Apply one full pump of VITAL C HYDRATING FACIAL OIL to entire area of treatment. Hold blade at a 45-degree angle. Clean blade periodically throughout treatment by wiping with a clean, dry cloth. SECTION 1: Forehead-hold skin taut and work blade vertically in 1-2" sections, moving from left side to right side of forehead. Include top of nose. SECTION 2: Left cheek-hold skin taut and work blade horizontally in 1-2" sections, beginning from top of cheekbone to ear. Include side of nose. Last pass should begin at corner of the mouth. SECTION 3: Right cheek-repeat steps above. SECTION 4: Chin and perioral area-hold skin taut and work blade vertically in 1-2" sections, moving from left side to right side of jaw and chin area. Ask client to open mouth when working around mouth area. |
| 05- EXFOLIATE | Measure 1/8 oz. of SIGNATURE FACELIFT SOLUTION into a medicine cup. Apply with an I SWAB in a circular motion beginning at forehead, moving to right cheek, left cheek, nose and perioral area. Massage into skin for 1 minute. Solution may be left on the skin 5-10 minutes. Remove thoroughly with sponges and cool water until client feels ZERO activity. |
| 06- MASQUE | Apply 3-4 full pumps of the O2 LIFT OXYGENATING FACIAL MASQUE to entire face, using an I SWAB . Do not massage. Upon application, the masque will thicken and settle in a cloud-like fashion. Let sit until all the effervescent bubbling is complete (approximately 10-15 minutes). Remove with sponges and tepid water. Optional: Perform arm and hand massage with VITAL C HYDRATING HAND AND BODY LOTION while masque sits. |
| 07- TARGET: BRIGHTEN | Customize by combining 1 full dropper of chosen I ENHANCE based on client's skin needs with ILUMA INTENSE BRIGHTENING SERUM and apply to entire treated area. |
| 08- EYE | Apply ILUMA INTENSE BRIGHTENING EYE CRÈME to orbital area. |
| 09- PREVENTION+ | Apply a generous amount of PREVENTION+® DAILY ULTIMATE PROTECTION MOISTURIZER SPF 50 to entire treated area. |
| 10- I CONCEAL | Apply I CONCEAL using FOUNDATION BRUSH to create a flawless finish. |
| 11- LIP | Apply ORMEDIC® BALANCING LIP ENHANCEMENT COMPLEX to entire lip area. |
| 12- YANA | Offer client a complimentary sample of YANA® DAILY COLLAGEN SHOTS . |
| 13- POST TREATMENT | Provide IMAGE POST TREATMENT KIT to client and review post treatment care. |

MICRONEEDLING PROTOCOL



SKINCARE GOALS: **ANTI-AGING**

DESCRIPTION: This treatment combines the rejuvenating properties of microneedling with clinical results from IMAGE products to target all signs of aging. Features bt-titan® MN model MD technology (available in the EU only)

TREATMENT TIME: 50 Minutes

| | |
|---------------------------|--|
| 01- PRE-CLEANSE | Remove eye and lip makeup with I BEAUTY REFRESHING FACIAL WIPES . Apply ORMEDIC® BALANCING FACIAL CLEANSER and cleanse with wet fingertips for 1-2 minutes. Remove with sponges and tepid water or aromatherapy steam towels. |
| 02- NUMB | Using IMAGE I SWAB , apply numbing cream of choice (23% lidocaine/7% prilocaine). Remove after 30 minutes using rough gauze. |
| 03- CLEANSE | Apply IMAGE MD RESTORING FACIAL CLEANSER and cleanse the skin for 1-2 minutes. Remove with tepid water and sponges. |
| 04- PREP | Saturate rough gauze with DEGREASING PREP SOLUTION . Squeeze out excess solution. Using firm pressure, swipe gauze in both horizontal and vertical directions over the entire area to be treated. |
| 05- EXFOLIATE | Combine 1 full dropper of I ENHANCE HYALURONIC ACID FACIAL ENHANCER with 1 full dropper of I ENHANCE ANTIOXIDANT FACIAL ENHANCER in a medicine cup and apply to area of treatment with an I SWAB . Reapply as needed ensuring skin is kept moist. <ul style="list-style-type: none">• Divide the face into 5 sections (forehead, right side, left side, upperlip/chin, nose).• Work in 2-4" inch sections keeping skin taut. Use a vertical and horizontal pattern.• Repeat this pattern until the entire area of treatment has been covered. |
| 06- HYDRATE | Apply 1 full dropper of I ENHANCE HYALURONIC ACID FACIAL ENHANCER to entire treated area. |
| 07- LIP | Apply ORMEDIC BALANCING LIP ENHANCEMENT COMPLEX to entire lip area. |
| 08- YANA | Offer client a complimentary sample of YANA® DAILY COLLAGEN SHOTS . |
| 09- POST TREATMENT | Provide IMAGE POST TREATMENT KIT to client and review post treatment care. |

MICROEXFOLIATION PROTOCOL



SKINCARE GOALS: **ANTI-AGING**

DESCRIPTION: This treatment combines the rejuvenating properties of nanoneedling with clinical results from IMAGE products to target all signs of aging. Features bt-titan® MN model AE with nano cartridges technology.

TREATMENT TIME: 50 Minutes

| | |
|---------------------------------------|--|
| <p>01- CLEANSE</p> | <p>Remove eye and lip makeup with I BEAUTY REFRESHING FACIAL WIPES. Apply AGELESS TOTAL FACIAL CLEANSER and cleanse with wet fingertips for 1-2 minutes. Remove with sponges and tepid water or aromatherapy steam towels.</p> |
| <p>02- PREP</p> | <p>Saturate rough gauze with DEGREASING PREP SOLUTION. Squeeze out excess solution. Using firm pressure, swipe gauze in both horizontal and vertical directions over the entire area to be treated.</p> |
| <p>03- EXFOLIATE</p> | <p>Combine 1 full dropper of I ENHANCE HYALURONIC ACID FACIAL ENHANCER with 1 full dropper of I ENHANCE ANTIOXIDANT FACIAL ENHANCER in a medicine cup and apply to area of treatment with an I SWAB. Reapply as needed ensuring skin is kept moist.</p> <ul style="list-style-type: none"> • Divide the face into 5 sections (forehead, right side, left side, upperlip/chin, nose). • Work in 2-4" inch sections keeping skin taut. Use a vertical and horizontal pattern. • Repeat this pattern until the entire area of treatment has been covered. |
| <p>04- LIFT</p> | <p>Measure 1/8 oz. of ORMEDIC® LIFT SOLUTION into a medicine cup. Apply with an I SWAB in a circular motion beginning at forehead, moving to right cheek, left cheek, nose and perioral area. Massage for 1 minute. Solution may be left on the skin up to 5 minutes. Remove thoroughly with sponges and cool water until client feels ZERO activity.</p> |
| <p>05- TARGET: BALANCE</p> | <p>Apply ORMEDIC BALANCING ANTIOXIDANT SERUM to entire treated area.</p> |
| <p>06- EYE</p> | <p>Apply the MAX™ EYE CRÈME to orbital area.</p> |
| <p>07- PREVENTION+</p> | <p>Apply a generous amount of PREVENTION+® DAILY HYDRATING MOISTURIZER SPF 30 to entire treated area.</p> |
| <p>08- LIP</p> | <p>Apply ORMEDIC BALANCING LIP ENHANCEMENT COMPLEX to entire lip area.</p> |
| <p>09- YANA</p> | <p>Offer client a complimentary sample of YANA® DAILY COLLAGEN SHOTS.</p> |
| <p>10- POST TREATMENT</p> | <p>Provide IMAGE POST TREATMENT KIT to client and review post treatment care.</p> |

MICROCURRENT PROTOCOL



SKINCARE GOALS: **HYDRATE AND LIFT**

DESCRIPTION: Perfect for all skin types, this protocol uses microcurrent technology with IMAGE formulas that leave skin with a radiant, refreshed appearance. Features bt-nano technology.

TREATMENT TIME: 50 Minutes

| | |
|---|--|
| 01- PRE-CLEANSE | Remove eye and lip makeup with I BEAUTY REFRESHING FACIAL WIPES . Apply ILUMA® INTENSE BRIGHTENING EXFOLIATING CLEANSER and cleanse with wet fingertips for 1-2 minutes. Remove with sponges and tepid water or aromatherapy steam towels. |
| 02- CLEANSE | Apply the MAX™ CLEANSER and cleanse with wet fingertips for 1-2 minutes. Remove with sponges and tepid water or aromatherapy steam towels. |
| 03- EXFOLIATE | Dispense MICRODERM EXFOLIATOR into a medicine cup or flexi-bowl. Apply with an I SWAB in a circular motion to entire area of treatment. Massage gently for 1-3 minutes. Remove with dry gauze followed by sponges and tepid water or aromatherapy steam towels. |
| 04- TARGET: HYDRATE AND LIFT | Combine 1 full dropper of I ENHANCE HYALURONIC ACID FACIAL ENHANCER with ORMEDIC® BALANCING GEL MASQUE in a medicine cup and apply with an I SWAB to left side of face. Keep a small bowl of ionized water to dip cotton buds in throughout treatment: <ul style="list-style-type: none"> • Perform lifting and holding techniques on left side of face according to technology program and manual. • Apply remaining product to right side of face and repeat lifting and holding techniques. Remove masque with sponges and tepid water or aromatherapy steam towels. |
| 05- BRIGHTEN | Combine 1 full dropper of I ENHANCE ANTIOXIDANT FACIAL ENHANCER with ILUMA INTENSE BRIGHTENING SERUM and apply to entire treated area. |
| 06- NOURISH | Combine 1 full dropper of the I ENHANCE HYALURONIC ACID FACIAL ENHANCER with 1 pump of ORMEDIC BALANCING ANTIOXIDANT SERUM in a medicine cup and apply to entire treated area. Keep remaining product aside to dip cotton buds in: <ul style="list-style-type: none"> • Perform skinwork techniques according to technology program and manual. Massage any remaining product into the skin. |
| 07- SMOOTH | Dispense the MAX WRINKLE SMOOTHER into a medicine cup and apply with an I SWAB to forehead and around orbital area. Perform light tapotement. |
| 08- CONTOUR | Massage the MAX CONTOUR GEL CRÈME into lower portion of face, including cheeks, jawline and perioral area. Apply in upward strokes. |
| 09- EYE | Apply ILUMA INTENSE BRIGHTENING EYE CRÈME to orbital area. |
| 10- PREVENTION+ | Apply a generous amount of PREVENTION+® DAILY ULTIMATE PROTECTION MOISTURIZER SPF 50 to entire treated area. |
| 11- I CONCEAL | Apply I CONCEAL using FOUNDATION BRUSH to create a flawless finish. |
| 12- LIP | Apply ORMEDIC BALANCING LIP ENHANCEMENT COMPLEX to entire lip area. |
| 13- YANA | Offer client a complimentary sample of YANA® DAILY COLLAGEN SHOTS . |
| 14- POST TREATMENT | Provide IMAGE POST TREATMENT KIT to client and review post treatment care. |

ULTRASONIC EXFOLIATION PROTOCOL

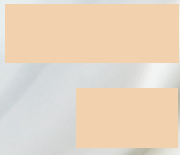


SKINCARE GOALS: **SMOOTH & FIRM**

DESCRIPTION: This smoothing and firming treatment harnesses the power of ultrasonic technology to aid in extractions and achieve superior results with IMAGE products. Features bt-micro ultrasonic technology.

TREATMENT TIME: 50 Minutes

| | |
|-----------------------------------|--|
| 01- PRE-CLEANSE | Remove eye and lip makeup with I BEAUTY REFRESHING FACIAL WIPES . Apply ILUMA® INTENSE BRIGHTENING EXFOLIATING CLEANSER and cleanse with wet fingertips for 1-2 minutes. Remove with sponges and tepid water or aromatherapy steam towels. |
| 02- CLEANSE | Apply ORMEDIC® BALANCING FACIAL CLEANSER and cleanse with wet fingertips for 1-2 minutes. Remove with sponges and tepid water or aromatherapy steam towels. |
| 03- EXFOLIATE | Dispense MICRODERM EXFOLIATOR into a medicine cup or flexi-bowl. Apply with an I SWAB in a circular motion to entire area of treatment. Massage gently for 1-3 minutes. <ul style="list-style-type: none"> • Set bt-micro to EXFOL mode. Press once for low and twice for high setting. • Hold bt-micro at a 45-degree angle with buttons facing palm of hand. • Slide device lightly, applicator end up, with upward movement, removing product from applicator as you work. Remove remaining product with dry gauze followed by sponges and tepid water or aromatherapy steam towels. |
| 04- TARGET: CLEAR | Dispense PRE-EXTRACTION EMULSION into a medicine cup and mix with an I SWAB or fan brush until product reaches a whipped consistency. Apply to areas of congestion. Massage gently for 30 seconds to create an even application and then steam the skin for 2 minutes. <ul style="list-style-type: none"> • After steaming, set bt-micro to CLEAR mode. Press once for low and twice for high setting. • Hold unit with buttons facing away from palm, applicator end down. • Glide with upward motions over entire area of congestion for up to two minutes. |
| 05- EXTRACT (if necessary) | Set bt-micro to EXFOL mode high setting. Apply fingers to side of congestion and apply bt-micro to opposite side using gentle pressure. <ul style="list-style-type: none"> • Remove any excess debris or solution. • Wipe areas of extraction with 1-2 CLEAR CELL SALICYLIC CLARIFYING PADS. |
| 06- NOURISH | Combine 1 full dropper of the I ENHANCE HYALURONIC ACID FACIAL ENHANCER with the MAX™ SERUM and apply to entire treated area. |
| 07- MASQUE | Apply I MASK HYDRATING HYDROGEL SHEET MASK . <ul style="list-style-type: none"> • Set bt-micro to SERUM mode. Press once for low and twice for high setting. • Hold unit with buttons facing away from palm, applicator end down. • Glide with upward motions over entire mask area for up to two minutes. Remove mask after 10 minutes and massage any remaining essence into the skin. Optional: Perform arm and hand massage with VITAL C HYDRATING HAND AND BODY LOTION while mask sits. |
| 08- SMOOTH | Dispense the MAX™ WRINKLE SMOOTHER into a medicine cup and apply with an I SWAB to forehead and around orbital area. Perform light tapotement. <ul style="list-style-type: none"> • Set bt-micro to SERUM mode. Press once for low and twice for high setting. • Hold unit with buttons facing away from palm, applicator end down. • Glide with upward motions over entire treated area for up to two minutes. |
| 09- CONTOUR | Massage the MAX CONTOUR GEL CRÈME into lower portion of face, including cheeks, jawline and perioral area. <ul style="list-style-type: none"> • Set bt-micro to CREAM mode. Press once for low and twice for high setting. • Hold unit with buttons facing away from palm, applicator end down. • Glide with upward motions over entire treated area for up to two minutes. |
| 10- EYE | Apply ILUMA INTENSE BRIGHTENING EYE CRÈME to orbital area. |
| 11- PREVENTION+ | Apply a generous amount of PREVENTION+® DAILY ULTIMATE PROTECTION MOISTURIZER SPF 50 to entire treated area. |
| 12- I CONCEAL | Apply I CONCEAL using FOUNDATION BRUSH to create a flawless finish. |
| 13- LIP | Apply ORMEDIC BALANCING LIP ENHANCEMENT COMPLEX to entire lip area. |
| 14- YANA | Offer client a complimentary sample of YANA® DAILY COLLAGEN SHOTS . |
| 15- POST TREATMENT | Provide IMAGE POST TREATMENT KIT to client and review post treatment care. |



PROTOCOLS
BODY

PURIFYING BACK TREATMENT PROTOCOL



SKINCARE GOALS: **PURIFY**

DESCRIPTION: This clinical treatment combines chemical and mechanical exfoliation with the benefits of salicylic acid and soothing botanicals to target breakouts on the back.

TREATMENT TIME: 25-50 Minutes

01- CLEANSE

Mix **BODY SPA EXFOLIATING BODY SCRUB** with **CLEAR CELL SALICYLIC GEL CLEANSER** and apply to the entire back area. Massage for 7-10 minutes. Remove with sponges and tepid water or aromatherapy steam towels. (Steam optional)

02- PREP

Saturate rough gauze with **DEGREASING PREP SOLUTION**. Using firm pressure, swipe gauze in both horizontal and vertical directions over the entire area to be treated. (Optional: Repeat an additional 1-2 times for a deeper treatment)

03- EXFOLIATE

Measure 1/2 oz. of **ACNE LIFT SOLUTION** into a medicine cup. Apply with an **I SWAB** in a circular motion to entire back area. Massage for 1-3 minutes. Solution may be left on the skin up to 10 minutes. Remove thoroughly with sponges and cool water until client feels ZERO activity.

04- MASQUE

Apply **I MASK PURIFYING PROBIOTIC MASK** with a mask brush to entire back area. Leave on skin for 5-10 minutes. Remove with sponges and tepid water. Optional: Perform arm and hand or leg and foot massage with **VITAL C HYDRATING HAND AND BODY LOTION** while mask sits.

05- TARGET: PURIFY

Customize by combining 1-2 full droppers of **I ENHANCE KOJIC ACID FACIAL ENHANCER** with **ORMEDIC® BALANCING ANTIOXIDANT SERUM** and apply to entire treated area.

06- HYDRATE

Apply **ORMEDIC BALANCING BIOPEPTIDE CRÈME** to entire treated area

07- YANA

Offer client a complimentary sample of **YANA® DAILY COLLAGEN SHOTS**.

CELL.U.LIFT

BODY TREATMENT



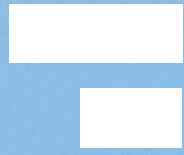
SKINCARE GOALS: **FIRM**

DESCRIPTION: This body toning treatment helps to fight skin laxity, giving a more smooth, contoured appearance to the body. This luxe experience starts with dry brushing to stimulate circulation and assist in the elimination of toxins, followed by an application of our body firming crème to help tighten and reduce the “orange peel” look associated with cellulite. Skin is left smooth, toned and hydrated.

TREATMENT TIME: 25-50 Minutes

| | |
|--|---|
| 01- PREP | Dress table with large sheet and large towel. Ask client to lay face down on table, under the towel. |
| 02- CLEANSE (back of body) | Mix BODY SPA EXFOLIATING BODY SCRUB with AGELESS TOTAL FACIAL CLEANSER . Mixture may be thinned with water. Apply to left leg, right leg, back and back of arms. Remove with steam towels. |
| 03- FIRM | Apply CELL.U.LIFT BODY LOTION to left leg, right leg and back in long, smooth movements. Massage until absorbed. Ask client to turn over onto supine position. |
| 04- CLEANSE (front of body) | Mix BODY SPA EXFOLIATING BODY SCRUB with AGELESS TOTAL FACIAL CLEANSER . Mixture may be thinned with water. Apply to left leg, right leg, abdomen and front of arms. Remove with steam towels. |
| 05- FIRM | Apply CELL.U.LIFT BODY LOTION to left leg, right leg, abdomen and arms in long, smooth movements. Massage until absorbed. |
| 06- WRAP | Wrap client with large sheet and place a blanket on client to keep warm. Perform neck and shoulder massage using VITAL C HYDRATING FACIAL OIL . Unwrap client after 15-20 minutes. |
| 07- MOISTURIZE | Apply BODY SPA REJUVENATING BODY LOTION to left leg, right leg, abdomen and arms in long, smooth movements. Massage until absorbed. Ask client to turn over onto their back. Apply BODY SPA REJUVENATING BODY LOTION to left leg, right leg and back in long, smooth movements. Massage until absorbed. |
| 08- LIP | Apply ORMEDIC® BALANCING LIP ENHANCEMENT COMPLEX to entire lip area. |
| 09- YANA | Offer client a complimentary sample of YANA® DAILY COLLAGEN SHOTS . |





PROTOCOLS **MD**



MD ADVANCED BHA LIFT

TREATMENT



SKINCARE GOALS: **RESTORE**

DESCRIPTION: Designed for blemish-prone skin, this advanced treatment features a salicylic acid-based peel that helps to exfoliate dead skin and remove excess oil, along with targeted products from the IMAGE MD® collection.

TREATMENT TIME: 25 Minutes

| | |
|----------------------------|---|
| 01- CLEANSE | Remove eye and lip makeup with I BEAUTY REFRESHING FACIAL WIPES . Apply IMAGE MD RESTORING FACIAL CLEANSER and cleanse with wet fingertips for 1-2 minutes. Remove with sponges and tepid water. |
| 02- PREP | Saturate rough gauze with DEGREASING PREP SOLUTION . Squeeze out excess solution. Using firm pressure, swipe gauze in both horizontal and vertical directions over the entire area to be treated. For barrier protection, apply a generous amount of petroleum jelly under lower lash line, around the folds of the nose and around entire lip area. |
| 03- EXFOLIATE | Measure 1/8 oz. of ADVANCED BHA LIFT into a medicine cup. Saturate rough gauze with ADVANCED BHA LIFT squeezing out any excess solution. Beginning at the forehead, firmly swipe gauze horizontally then vertically in a basket weave pattern. Continue this pattern on the right cheek, left cheek, nose, perioral area and neck. An additional 1-2 layers may be applied to the face; wait 5-7 minutes between each layer. Limit the neck to one layer only. For increased client comfort, sit client up between layers to drink a glass of ice water. DO NOT NEUTRALIZE - ADVANCED BHA LIFT IS A SELF-NEUTRALIZING SOLUTION. |
| 04- TARGET: RESTORE | Customize by combining 1 full dropper of I ENHANCE RETINOL FACIAL ENHANCER with IMAGE MD RESTORING RETINOL CRÈME and apply to entire treated area. |
| 05- EYE | Apply IMAGE MD RESTORING COLLAGEN RECOVERY EYE GEL to orbital area. |
| 06- PROTECT | Apply a generous amount of IMAGE MD RESTORING DAILY DEFENSE MOISTURIZER SPF 50 to entire treated area. |
| 07- I CONCEAL | Apply I CONCEAL using FOUNDATION BRUSH to create a flawless finish. |
| 08- LIP | Apply IMAGE MD RESTORING LIP ENHANCER SPF 15 to entire lip area. |
| 09- YANA | Offer client a complimentary sample of YANA® DAILY COLLAGEN SHOTS . |
| 10- POST TREATMENT | Provide IMAGE POST TREATMENT KIT to client and review post treatment care. |

MD LIGHTENING LIFT®

FORTE TREATMENT



SKINCARE GOALS: **BRIGHTEN**

DESCRIPTION: This lactic acid-based therapy helps to diminish the appearance of more advanced pigmentation, uneven skin tone and lingering discoloration with I PEEL LIGHTENING LIFT® FORTE and IMAGE MD® brightening products.

TREATMENT TIME: 25 Minutes

| | |
|-----------------------------|--|
| 01- CLEANSE | Remove eye and lip makeup with I BEAUTY REFRESHING FACIAL WIPES . Apply IMAGE MD RESTORING FACIAL CLEANSER and cleanse with wet fingertips for 1-2 minutes. Remove with sponges and tepid water. |
| 02- PREP | Saturate rough gauze with DEGREASING PREP SOLUTION . Squeeze out excess solution. Using firm pressure, swipe gauze in both horizontal and vertical directions over the entire area to be treated. |
| 03- EXFOLIATE | Measure 1/8 oz. of LIGHTENING LIFT FORTE into a medicine cup. Apply with an I SWAB in a circular motion beginning at forehead, moving to right cheek, left cheek, nose and perioral area. Massage into skin for 1 minute. Solution may be left on the skin 5-10 minutes. Remove thoroughly with sponges and cool water until client feels ZERO activity. |
| 04- TARGET: BRIGHTEN | Customize by combining 1 full dropper of I ENHANCE KOJIC ACID FACIAL ENHANCER with IMAGE MD RESTORING BRIGHTENING CRÈME and apply to entire treated area. |
| 05- EYE | Apply IMAGE MD RESTORING COLLAGEN RECOVERY EYE GEL to orbital area. |
| 06- PROTECT | Apply a generous amount of IMAGE MD RESTORING DAILY DEFENSE MOISTURIZER SPF 50 to entire treated area. |
| 07- I CONCEAL | Apply I CONCEAL using FOUNDATION BRUSH to create a flawless finish. |
| 08- LIP | Apply IMAGE MD RESTORING LIP ENHANCER SPF 15 to entire lip area. |
| 09- YANA | Offer client a complimentary sample of YANA® DAILY COLLAGEN SHOTS . |
| 10- POST TREATMENT | Provide IMAGE POST TREATMENT KIT to client and review post treatment care. |

MD PERFECTION LIFT™

FORTE TREATMENT



SKINCARE GOALS: **RESTORE**

DESCRIPTION: This treatment features a peel with AHAs, BHAs and active exfoliants for tough-to-treat signs of aging, pigmentation and blemishes, plus the advanced benefits of products from the IMAGE MD® collection.
TREATMENT TIME: 25 Minutes

| | |
|----------------------------|--|
| 01- CLEANSE | Remove eye and lip makeup with I BEAUTY REFRESHING FACIAL WIPES . Apply IMAGE MD RESTORING FACIAL CLEANSER and cleanse with wet fingertips for 1-2 minutes. Remove with sponges and tepid water. |
| 02- PREP | Saturate rough gauze with DEGREASING PREP SOLUTION . Squeeze out excess solution. Using firm pressure, swipe gauze in both horizontal and vertical directions over the entire area to be treated. For barrier protection, apply a generous amount of petroleum jelly under lower lash line, around the folds of the nose and around entire lip area. |
| 03- EXFOLIATE | Measure 1/8 oz. of PERFECTION LIFT OR PERFECTION LIFT FORTE into a medicine cup. Saturate rough gauze with PERFECTION LIFT OR PERFECTION LIFT FORTE squeezing out any excess solution. Beginning at the forehead, firmly swipe gauze horizontally then vertically in a basket weave pattern. Continue this pattern on the right cheek, left cheek, nose, perioral area and neck. An additional 1-2 layers may be applied to the face; wait 5-7 minutes between each layer. Limit the neck to one layer only. For increased client comfort, sit client up between layers to drink a glass of ice water. DO NOT NEUTRALIZE - PERFECTION LIFT OR PERFECTION LIFT FORTE IS A SELF-NEUTRALIZING SOLUTION. |
| 04- TARGET: RESTORE | Customize by combining 1 full dropper of I ENHANCE RETINOL FACIAL ENHANCER with IMAGE MD RESTORING RETINOL CREME and apply to entire treated area. |
| 05- EYE | Apply IMAGE MD RESTORING COLLAGEN RECOVERY EYE GEL to orbital area. |
| 06- PROTECT | Apply a generous amount of IMAGE MD RESTORING DAILY DEFENSE MOISTURIZER SPF 50 to entire treated area. |
| 07- I CONCEAL | Apply I CONCEAL using FOUNDATION BRUSH to create a flawless finish. |
| 08- LIP | Apply IMAGE MD RESTORING LIP ENHANCER SPF 15 to entire lip area. |
| 09- YANA | Offer client a complimentary sample of YANA® DAILY COLLAGEN SHOTS . |
| 10- POST TREATMENT | Provide IMAGE POST TREATMENT KIT to client and review post treatment care. |

MD WRINKLE LIFT®

FORTE TREATMENT



SKINCARE GOALS: **ANTI-AGING**

DESCRIPTION: This advanced glycolic-based treatment features the I PEEL WRINKLE LIFT® FORTE treatment and high-performance IMAGE MD® products designed for deeper wrinkles, lax skin and more progressed signs of aging.
TREATMENT TIME: 25 Minutes

| | |
|----------------------------|---|
| 01- CLEANSE | Remove eye and lip makeup with I BEAUTY REFRESHING FACIAL WIPES . Apply IMAGE MD RESTORING FACIAL CLEANSER and cleanse with wet fingertips for 1-2 minutes. Remove with sponges and tepid water. |
| 02- PREP | Saturate rough gauze with DEGREASING PREP SOLUTION . Squeeze out excess solution. Using firm pressure, swipe gauze in both horizontal and vertical directions over the entire area to be treated. |
| 03- EXFOLIATE | Measure 1/8 oz. of WRINKLE LIFT FORTE into a medicine cup. Apply with an I SWAB in a circular motion beginning at forehead, moving to right cheek, left cheek, nose and perioral area. Massage into skin for 1 minute. Solution may be left on the skin 5-10 minutes. Remove thoroughly with sponges and cool water until client feels ZERO activity. |
| 04- TARGET: HYDRATE | Customize by combining 1 full dropper of I ENHANCE HYALURONIC ACID FACIAL ENHANCER with IMAGE MD RESTORING SERUM and apply to entire treated area. |
| 05- EYE | Apply IMAGE MD RESTORING COLLAGEN RECOVERY EYE GEL to orbital area. |
| 06- PROTECT | Apply a generous amount of IMAGE MD RESTORING DAILY DEFENSE MOISTURIZER SPF 50 to entire treated area. |
| 07- I CONCEAL | Apply I CONCEAL using FOUNDATION BRUSH to create a flawless finish. |
| 08- LIP | Apply IMAGE MD RESTORING LIP ENHANCER SPF 15 to entire lip area. |
| 09- YANA | Offer client a complimentary sample of YANA® DAILY COLLAGEN SHOTS . |
| 10- POST TREATMENT | Provide IMAGE POST TREATMENT KIT to client and review post treatment care. |

