



Elite
SERIES



ELITE SERIES 2-Gang Decorator Screwless Wall Plate

Model No: SI8832-DB-GD-NK-SV

Description

Enerlites Elite Series screwless cover wall plates are made of high quality matte polycarbonate thermoplastic material and designed to enhance the look of any room. This standard size wall plate is intended to cover a single decorator receptacle or switch in a residential or commercial location.

Features

- High impact resistant thermoplastic frame
- Includes both the cover and wall back bracket
- Virtually unbreakable polycarbonate construction
- Designed for easy and fast installation - simply screw the mounting plate onto the wiring device
- No gaps
- No visible screws

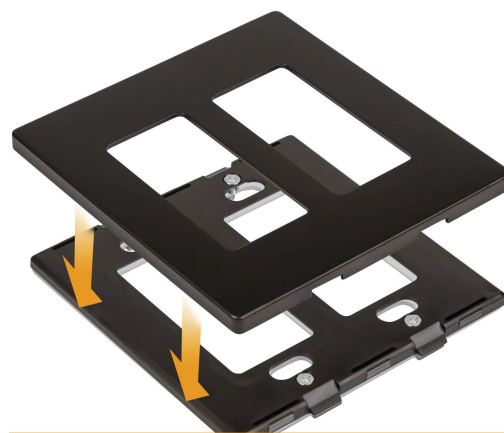
Testing & Code Compliance



Specifications

Environmental	Flammability UL94, V2 Rating
Depth	0.25"
Height X Width	4.68" X 2.73"
Inner Dimensions	Height: 2.65" x Length: 1.36"
Shape	Square
Gold	SI8832-GD
Silver	SI8832-SV
Nickel	SI8832-NK
Dark Bronze	SI8832-DB

Application



Easy to install snap-on cover