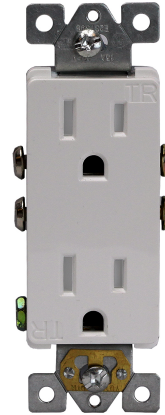


Residential Grade Decorator Receptacle



Model No.: 61501-TR

Description: Built-in protective shutter mechanism designed to prevent the insertion of foreign objects into the receptacle contact openings. Clearly visible "TR" markings on the device with shallow design for maximum wiring room in box

Features:

- High impact-resistant thermoplastic cover and body
- Flammability UL94, V2 Rating.
- Push-in and Side terminals for quick installation

Specifications:

Amperage..... 15Amp
Color Availability.....White, Almond, Black, Brown, Ivory, Light Almond and Gray
Voltage.....125VAC
Termination.....Rear Push In and Side
Receptacle MaterialThermoplastic
Standards and Certifications.....UL Listed

Testing & Code Compliance

