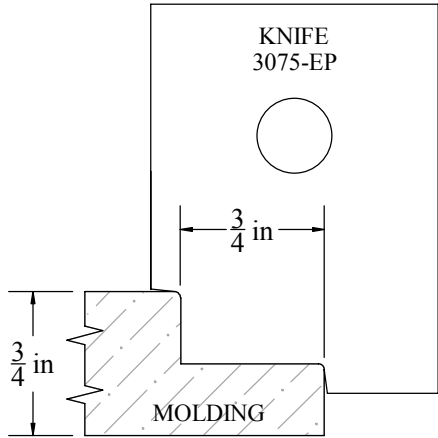
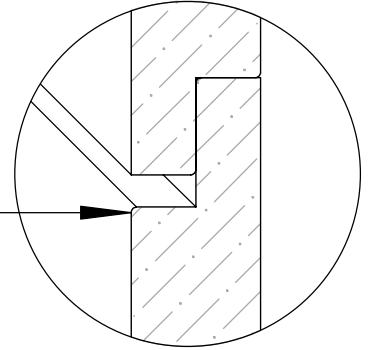


Description	NICKEL Gap, Top, 3/4" x 3/4" End Profile	W&H Item #	3075-EP
-------------	---	------------	---------

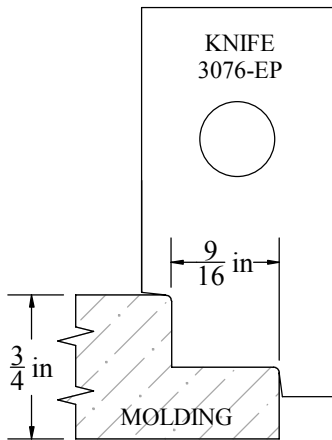
Printing may distort actual profile measurement. Print in "Actual Size", outer border should measure 8" x 10-1/2"



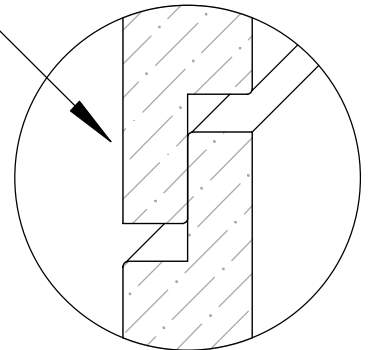
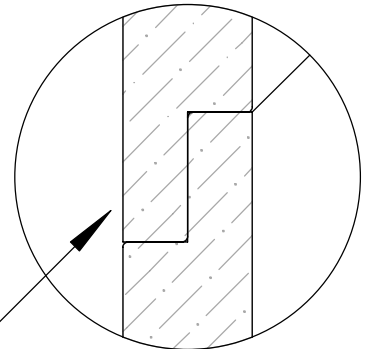
Use 3075-EP & 3076-EP  
together to achieve  
consistent 3/16" gap every time



Nickel Gap  
OR  
Shiplap

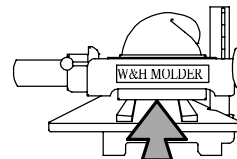


Use 3075-EP for  
reversible Shiplap  
No Gap or Choose  
Your Reveal (up to 1/2")



**WILLIAMS & HUSSEY  
MACHINE CO**  
105 State Route 101A, Unit 4  
Amherst, NH 03031

800-258-1380 or 603-732-0219  
Fax 603-732-4048  
www.williamsnhussey.com  
customerservice@williamsnhussey.com



**KNIFE ORIENTATION  
SHOWN FROM  
THE INFED SIDE  
OF MOLDER**