

GX460 ROCK SLIDER INSTALLATION

TOOLS NEEDED
13mm Socket ad ratchet



INCLUDED HARDWARE

Drivers side - 10 bolts and washers
Passenger side - 13 bolts and washers

1) REMOVE OEM STEPS



- 2) REMOVE KDSS SKID PLATE (SEE FIG 1) (FIG 2 SHOWS REMOVED PLATE)
- 3) CUT SKID PLATE (SEE FIG 3)



DRIVERS SIDE

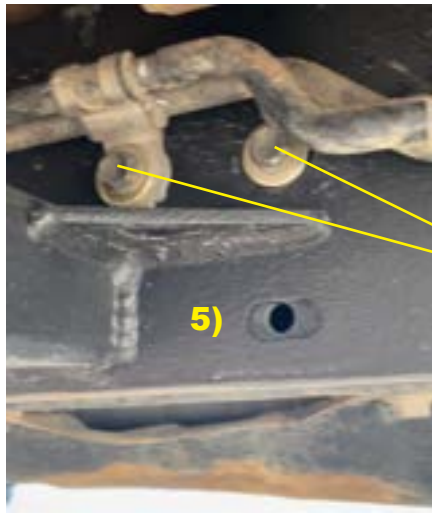
FRONT



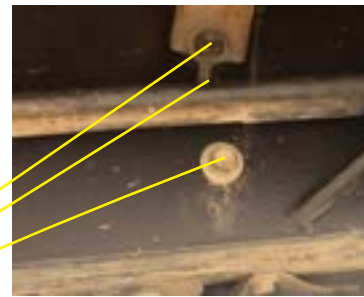
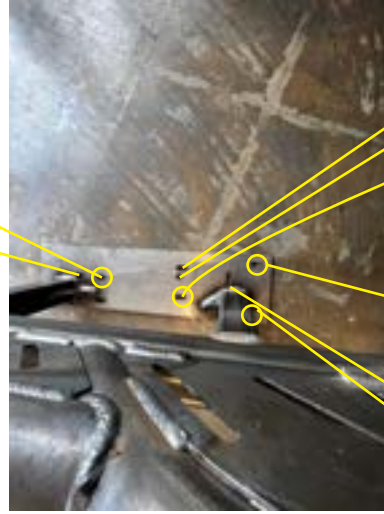
BACK

- 4) REMOVE BRAKE LINE BOLTS
- 5) LIFT SLIDERS INTO PLACE
- 6) MOUNT BOLTS IN FRONT 2 HOLES (FIG 4 SHOWS THE HOLES BEING USED, 4B SHOWS HOW IT WILL LOOK MOUNTED)
- 7) MOUNT ALL BOLTS EXCEPT THE LOWER HOLE BELOW THE BRAKE LIKE (FIG 5)
- 8) FIG 5B SHOWS THE REAR LEGS MOUNTED

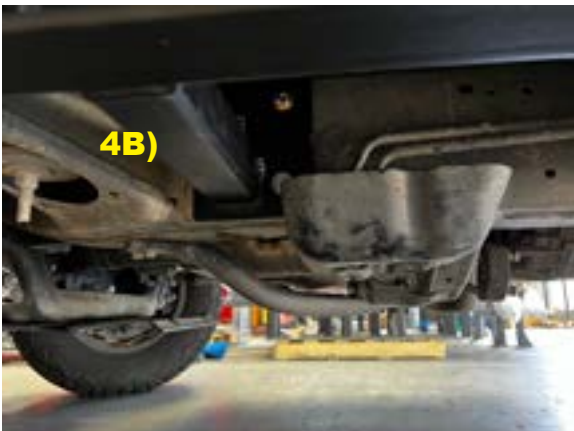
FRONT



BACK



4B)



5B)



GX460 ROCK SLIDER INSTALLATION DRIVERS SIDE

FRONT LEGS



BACK LEGS



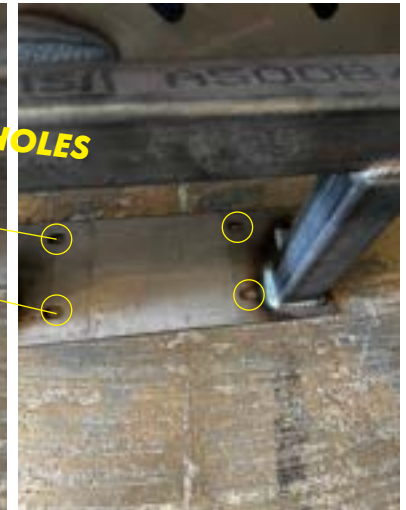
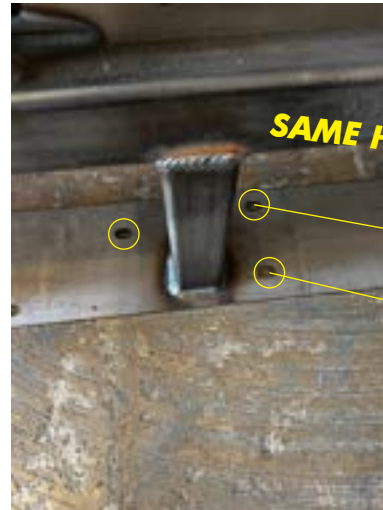
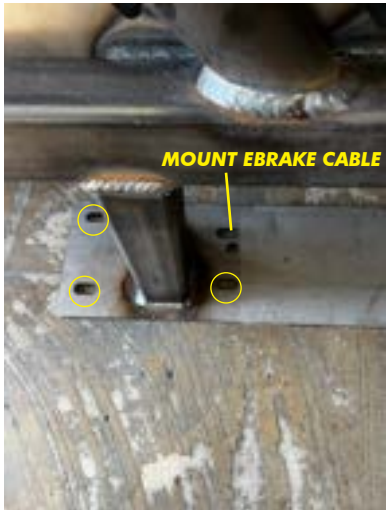
GX460 ROCK SLIDER INSTALLATION PASSENGER SIDE

BACK



FRONT

BACK



FRONT

SAME HOLES

GX460 ROCK SLIDER INSTALLATION PASSENGER SIDE

9) REMOVE BRAKE LINE BOLTS
10) BOLT UP SLIDERS, SEE BOLT
DIAGRAM BELOW (FIG 6,7,8,9)

