

OFFROAD

GX460/470 XL MOLLE PANEL INSTALLATION

STEP 1

Panel Assembly

NEED: 4 1/4:20X3/4" BOLTS, WASHERS AND NUTS, UPPER BRACKET AND MOLLE PANEL.

- Hand tighten the upper panel to the lower panel. You will adjust once mounted to the roof rack.



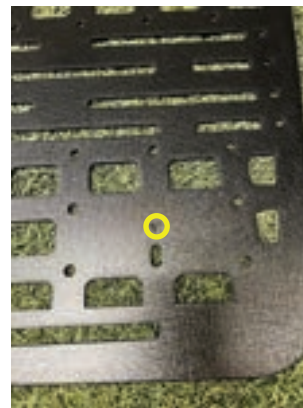
STEP 2

Mount suction cups

NEED: 2 1/4:20 X 3/8" BOLTS & SUCTION CUPS

- 1 1/4:20 x 3/8" bolt for each suction cup. Suction cups get bolted below the arrow.

* Dont over tighten to the suction cup



STEP 3

Mounting the panel

- Loosen the 2 outer rail bolts.
- Mount the upper bracket to the rail and replace the 2 bolts.
- Line up the panel to the rear window and tighten up all the bolts.
- Secure the suction cups to the rear window by pumping them. Make sure rear window is clean, if there is any dirt, they wont stick properly. * Dont over pump

