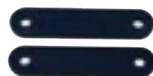


GX460 TIRE CARRIER INSTRUCTIONS

TOOLS NEEDED

RATCHET, 10MM SOCKET, 13MM WRENCH, 13MM SOCKET, 14MM WRENCH, 14MM SOCKET, DREMEL, RAZOR BLADE, PANEL PULLER
3/32" DRILL BIT, 1/8" DRILL BIT, 1/4" DRILL BIT, 5/16" DRILL BIT, 3/8" DRILL BIT, 25/64 DRILL BIT, DRILL, RIVET NUT TOOL
WIRE STRIPPER, CRIMPING TOOL, WIRE CUTTERS, HEAT GUN

INCLUDED HARDWARE



1) NECK SUPPORT BRACES



2) NECK HARDWARE



3) TONGUE HARDWARE



4) UPPER CARRIER & INNER SUPPORT BRACE HARDWARE



5) LOWER CARRIER & BACKING PLATE HARDWARE

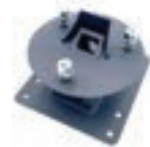


7) TIRE CARRIER



8a) STANDARD NECK FOR CPM (BUNDLE 2)

or



8b) SLOTTED CAMERA NECK (BUNDLE 1)

UPPER



LOWER



6) INNER SUPPORT BRACES



9) *OPTIONAL CENTER PLATE MOUNT (BUNDLE 2)



10) DOWN FORCE PLATE



11) tongue



12) QUICK RELEASE CONNECTORS (FOR BUNDLE 2)



13) DIY RELOCATION FOR LICENSE PLATE (BUNDLE 1)

*INSTALL SKILL LEVEL



3 OUT OF 5

BEFORE CONTINUING, BE SURE TO KNOW

WE RECOMMEND 2 PEOPLE FOR THIS INSTALL. WE DON'T RECOMMEND ANY ACCESSORIES ADDED TO OUR CARRIER
JW OFFROAD IS NOT RESPONSIBLE FOR ANY DAMAGES, MISUSE OF OUR MOUNTS, OR USER ERROR

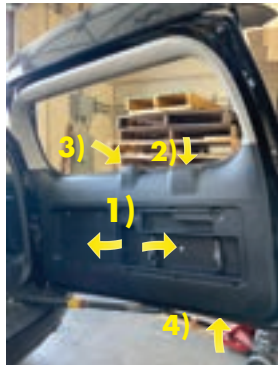
STEP 1 CARRIER ASSEMBLY

NEED: NECK SUPPORT BRACES, HARDWARE, TIRE CARRIER AND NECK



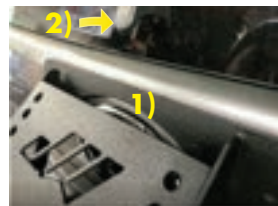
STEP 2 REMOVAL OF PLASTICS

- 1) REMOVE BOTH PANEL COVERS
- REMOVE 10MM BOLT
- 2) REMOVE PHILLIPS SCREW
- 3) REMOVE PLASTIC COVER
- 4) USE BODY PANEL TOOL & POP TABS TO REMOVE REAR HATCH PLASTICS.
- 5) REMOVE DUST SHIELD



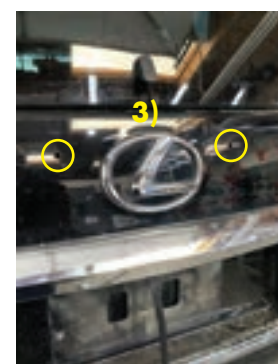
STEP 3 MOUNTING THE CARRIER

- 1) CENTER THE CARRIER TO HATCH
- 2) GOOD REF. FOR CENTER
- 3) ONCE CENTERED, MARK THE HOLES. MAKE SURE CENTER OF EACH SIDE IS 2 5/8" FROM BOTTOM OF WINDOW
- 4) CENTER PUNCH TOP MOUNTING POINTS



STEP 4 DRILLING THE HATCH

- 1) START WITH A 3/32" DRILL BIT TO START YOUR PILOT HOLE
- 2) WORK YOUR WAY UP 1/8", 1/4"
- 3) FINISH WITH THE 5/16" DRILL BIT



*** DO NOT MOUNT THE CARRIER YET.**

STEP5 UPPER INNER DOUBLE SKIN SUPPORT

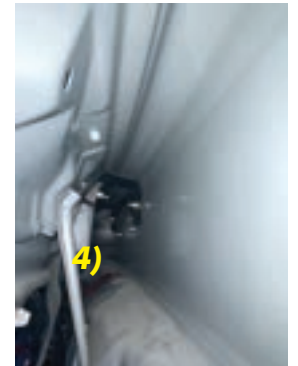
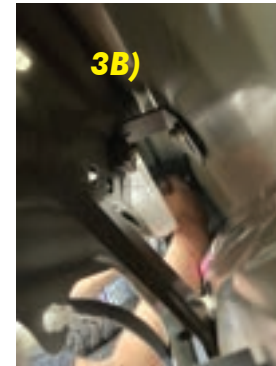
- 1) SLIDE INNER DOOR SKIN
SUPPORT IN HATCH



- 2) MAKE SURE YOU PUSH UP
THE BRACKET AS FAR UP AS
POSSIBLE. 2B) INSERT BOLTS
THROUGH CARRIER INTO DOOR
SKIN SUPPORT BRACE



- 3) INSERT BOLT FROM INNER
DOOR SKIN SIDE THROUGH INNER
DOOR SKIN SUPPORT & 3B) ADD
WEDGE WASHERS.



- 4) WHAT INNER DOOR SKIN
SUPPORT SHOULD LOOK LIKE

- 5) DRILL OUT THE FIRST
LOWER CARRIER BOLT
HOLES WITH 5/16" DRILL BIT.
ONCE DRILLED OUT, PUT A
BOLT THROUGH TO HOLD
IN PLACE. DRILL 2ND HOLE.
REMOVE BOLT AND MOUNT
DOWN FORCE PLATE. HAVE
THE 2ND PERSON HOLD
BACKING PLATE FROM THE
INSIDE OF THE DOOR SKIN
& HAND TIGHTEN.



13MM SOCKET FOR OUTSIDE
13MM WRENCH FOR 2ND
PERSON TO HOLD THE BOLT
FROM THE INSIDE. TIGHTEN
CARRIER BOLTS FROM TOP
TO BOTTOM. WHEN
TIGHTENING THE BOTTOM
BOLTS, MAKE SURE TO PUSH
UP ON THE DOWN FORCE
PLATE.



TONGUE INSTALLATION

STEP 6

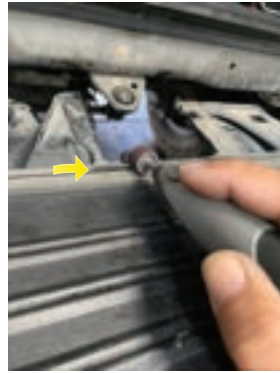
- 1) REMOVE PLASTIC ACCESS COVER
- 2) PULL OFF TOP BUMPER COVER
- 3) CUT OUT PLASTIC



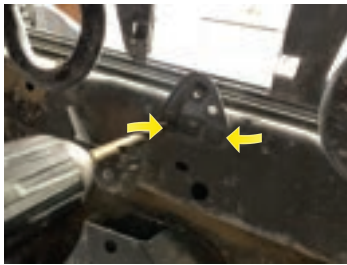
- 4) WHAT CUT OUT SHOULD LOOK LIKE DONT WORRY IF ITS NOT THE PRETTIEST THIS WILL BE COVERED



- 5) GRIND DOWN THE LIP WITH A DREMEL
- 6) LIP SHOULD LOOK LIKE THIS WHEN FINISHED



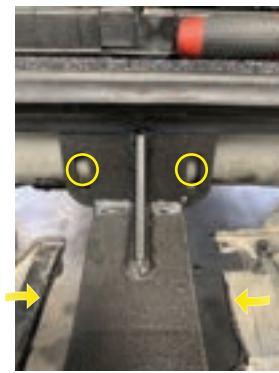
- 7) GET YOUR 3/8" DRILL BIT TO DRILL OUT THE SPOT WELDS. MAKE SURE NOT TO DRILL THROUGH THE SPOT WELDS.



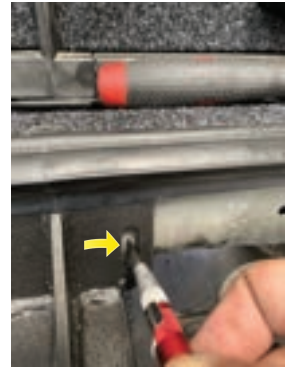
- 8) PULL BACK TAB AND REMOVE.



- 9) LINE UP TONGUE IN THE CENTER AND MARK THE HOLES TO BE DRILLED



- 10) CENTER PUNCH



- 11) START OFF PILOT HOLES WITH 3/32" DRILL BIT AND END WITH 25/64"



- 12) NUTCERT WITH PROVIDED NUTCERTS.



- 13) HAND TIGHTEN TONGUE. (PRESS DOWN ON THE TONGUE WHILE TIGHTENING)



- 14) CENTER PUNCH HOLE FOR BOTTOM SIDE OF THE TONGUE



15) DRILL PILOT HOLE WITH 3/32" DRILL BIT. WORK UP TO 25/64"



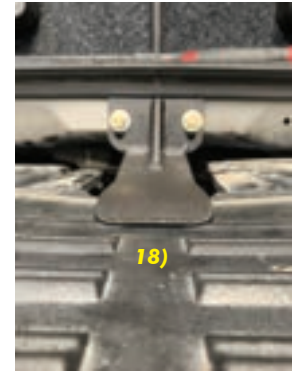
16) NUTCERT



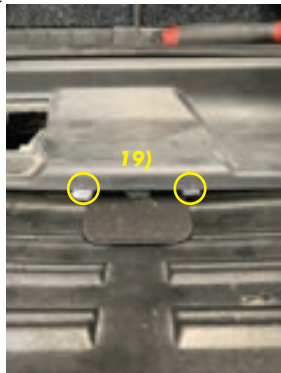
17) PUT BOLTS IN FRONT & BOTTOM. PRESS DOWN ON TONGUE WHEN TIGHTENING FRONT BOLTS.



18) TIGHTEN BOTTOM BOLT (TENSION BOLTS) SHOULD LOOK LIKE FIGURE 16



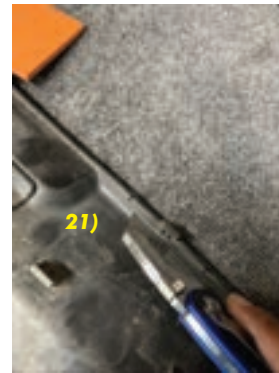
19) PUT PLASTIC COVER BACK ON TO MARK THE CUT LINES



20) CUT WITH AIR SAW OR RAZOR BLADE



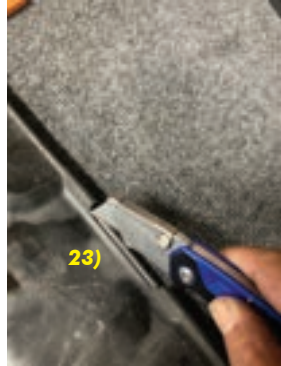
21) SCORE THE BACK OF THE PLASTICS, YOU DONT HAVE TO CUT ALL THE WAY THROUGH.



22) BEND PLASTICS ON THE SCORE LINE AND IT WILL BEND PERFECTLY.



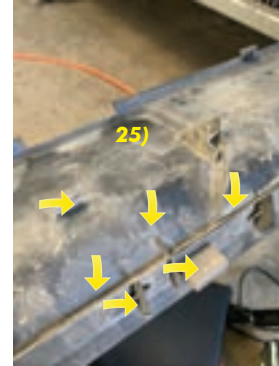
23) CUT ACROSS THE LINE



24) SHOULD LOOK LIKE FIGURE 24 WHEN DONE



25) NEED TO GRIND DOWN ALL POINTS TO CLEAR A PATHWAY FOR THE TONGUE



26) WILL LOOK LIKE FIGURE 26 WHEN COMPLETE



27) PUT COVER BACK ON

