

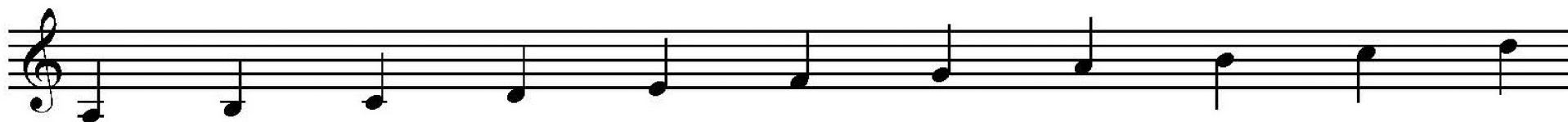


A Complete Fingering Chart for Double Ocarina (Part One)

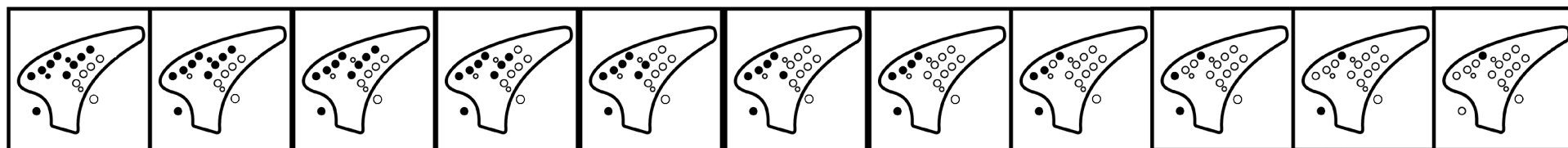
This fingering chart is for the main ocarina.

The actual pitch is one octave above the notes written here.

A B C D E F G A B C D



©2010 by STL Ocarina

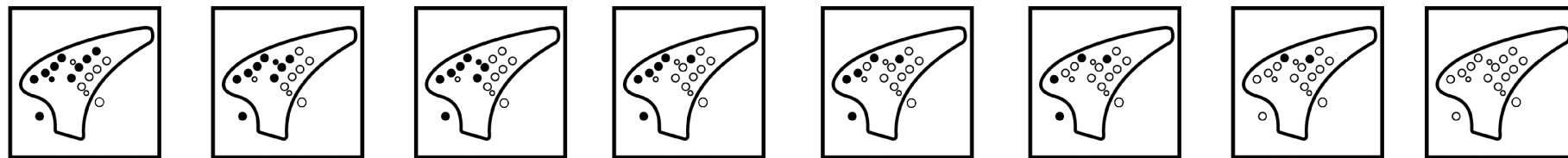


3 4[#] = 5^b 5 6 7 1 2 3 4[#] = 5^b 5 6

A[#]=B^b C[#]=D^b D[#]=E^b F[#]=G^b G[#]=A^b A[#]=B^b C[#]=D^b D[#]=E^b



©2010 by STL Ocarina



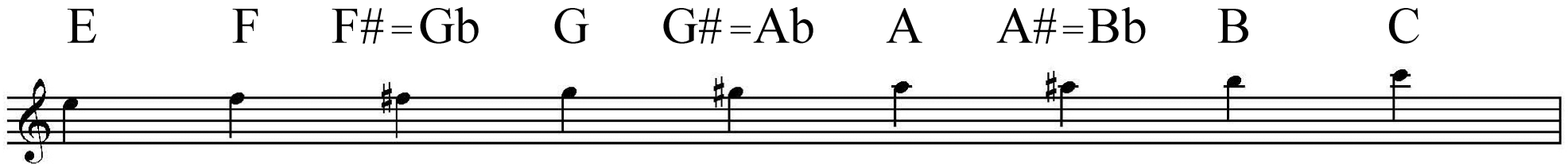
4 5[#] = 6^b 6[#] = 7^b 1[#] = 2^b 2[#] = 3^b 4 5[#] = 6^b 6[#] = 7^b



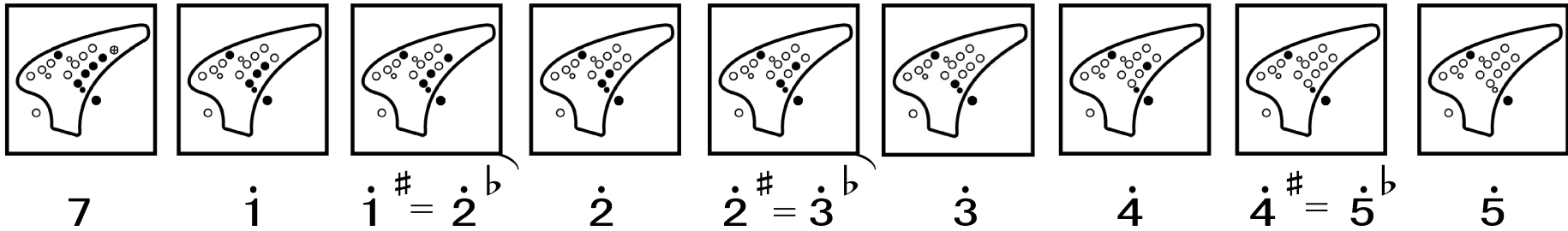
A Complete Fingering Chart for Double Ocarina (Part Two)

This fingering chart is for the second ocarina.

The actual pitch is one octave above the notes written here.



©2010 by STL Ocarina



Your Max Range Double Ocarina can play four more notes than the regular double ocarina.

