

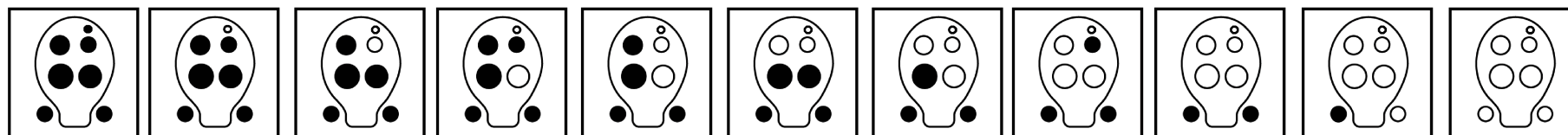


A Complete Fingering Chart for 6 Hole Double Ocarinas with Maximum Range(Part One)

This fingering chart is for the outer holes (tenor ocarina)
The actual pitch is one octave above the written notes here

B C D E F G A B C D E

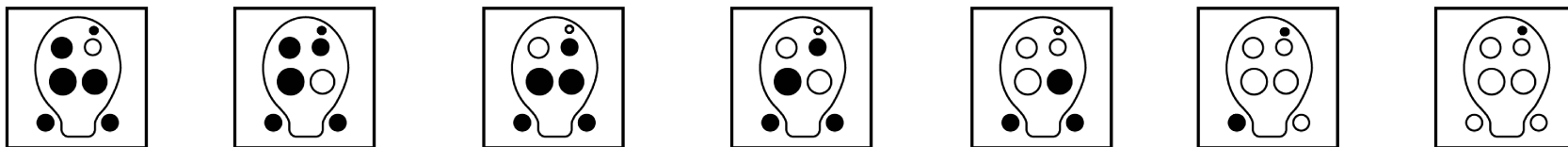
©2010 by STL Ocarina



$4^{\#} = 5^{\flat}$ 5 6 7 1 2 3 $4^{\#} = 5^{\flat}$ 5 6 7

C# = Db D# = Eb F# = Gb G# = Ab A# = Bb C# = Db D# = Eb

©2010 by STL Ocarina



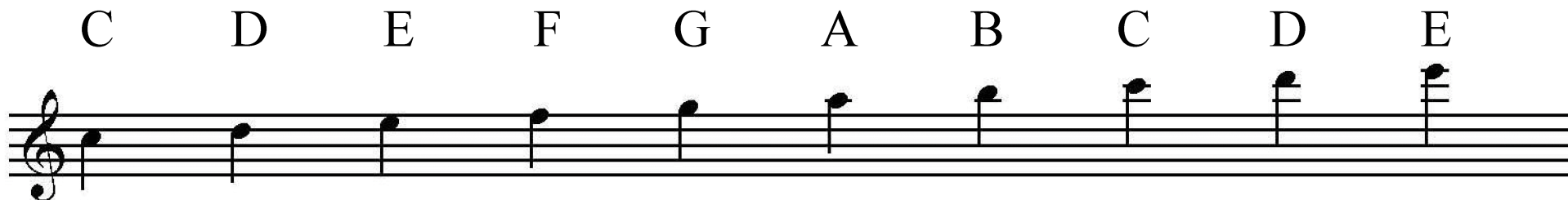
$5^{\#} = 6^{\flat}$ $6^{\#} = 7^{\flat}$ $1^{\#} = 2^{\flat}$ $2^{\#} = 3^{\flat}$ 4 $5^{\#} = 6^{\flat}$ $6^{\#} = 7^{\flat}$



A Complete Fingering Chart for 6 Hole Double Ocarinas with Maximum Range(Part Two)

This fingering chart is for the inner holes (soprano ocarina)

The actual pitch is one octave above the written notes here



©2010 by STL Ocarina

