



DEVONSTONE collection



Composition : 100% Cotton **Width * :** 112cm / 43.5" **Length / Put Up :** 8m / 8.7yd

* Unless otherwise marked as Linen or Wide width

Washing : Machine wash cold, Do not bleach, Wash dark colours separately, Tumble dry low, Remove promptly



Worldwide Distributor
www.twogreenzebras.com
sales@twogreenzebras.com
@2greenzebras

**Ngurambang Cultural Education
and Aboriginal Art**

Artworks by Wayne Martin

www.ngurambangoriginalart.com

ngurambangoriginalart19@gmail.com

@ngurambang

DEVONSTONE
collection
&
Wayne Martin

Ngurambang Collection

Ngurambang means 'Home / Country' in Wiradjuri language. This Aboriginal owned and run Business was created by Husband and Wife team Danielle and Wayne who are both very passionate about their culture and being able to share it with others.

Danielle is a proud Wulli Wulli woman from Central QLD, who manages the business. Danielle grew up in her home town of Theodore QLD where she, her husband Wayne and daughter Stella-May still live.

Wayne is the Artist and is a proud Wiradjuri/Maranganji (Mardigan) man. Wayne's family originates from Cunnamulla in South West QLD on Kunja country. His mother's country is Mardigan country, in Quilpie. He also has family connections in Lightning Ridge on Yuwaalaraay Country, his grandmother's country is along the Lachlan and Murrumbidgee Rivers on Wiradjuri country.



Wayne's family moved around a lot throughout QLD and NSW when he was growing up. He has done a lot of travel throughout his life. As a teenager Wayne's uncle also named Wayne started teaching him about Aboriginal Culture and Lore.

Along his cultural journey he met a lot of strong cultural men and this is what inspires his art which showcases dreaming stories and connections to Mother Earth.

Wayne loves to share his culture with everyone and painting has allowed him to do that. He wants to be able to give people a piece of his journey, his cultural knowledge and experiences.



DV3620

Ngulburnan (Waterholes)

This painting represents the rivers and water holes we connect with on country.



DV3621

Ngulburnan (Waterholes)

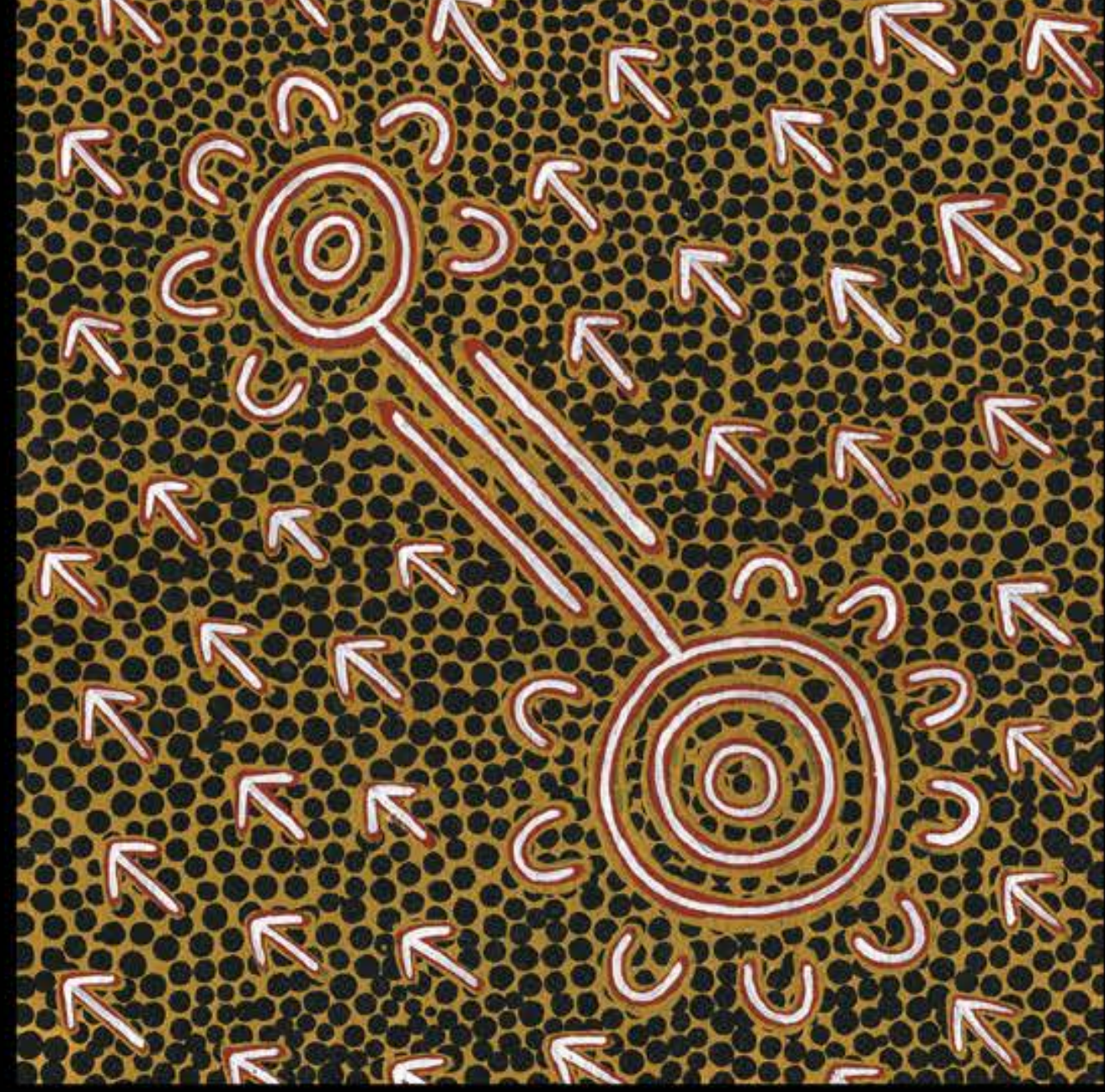
100% scale

This painting represents the rivers on country that we have a strong connection with.

Selvage



Wandayali Yiranmanggi
(Echidna & White Ants)
This piece represents the echidna feasting
on white ants



Dhinawan Dhuray (Emu Connection)
This painting represents the emu family coming
together for ceremony and keeping the
connection with the land.

DV3622

*Image to full scale

Panel size 13.5 x 13.5" / 34 x 34 cm

Fabric Repeat 16" x 43.5" WOF



Bookilee (Crayfish)

This piece represents one of many bush
food we catch on country

Selvage

Selvage



Dhuray (Connection)

This painting is about our people having a strong connection with country.



Bandhaa Yarruhang (Kangaroo Dreaming)
Kangaroo families coming together for family ceremony.

DV3623

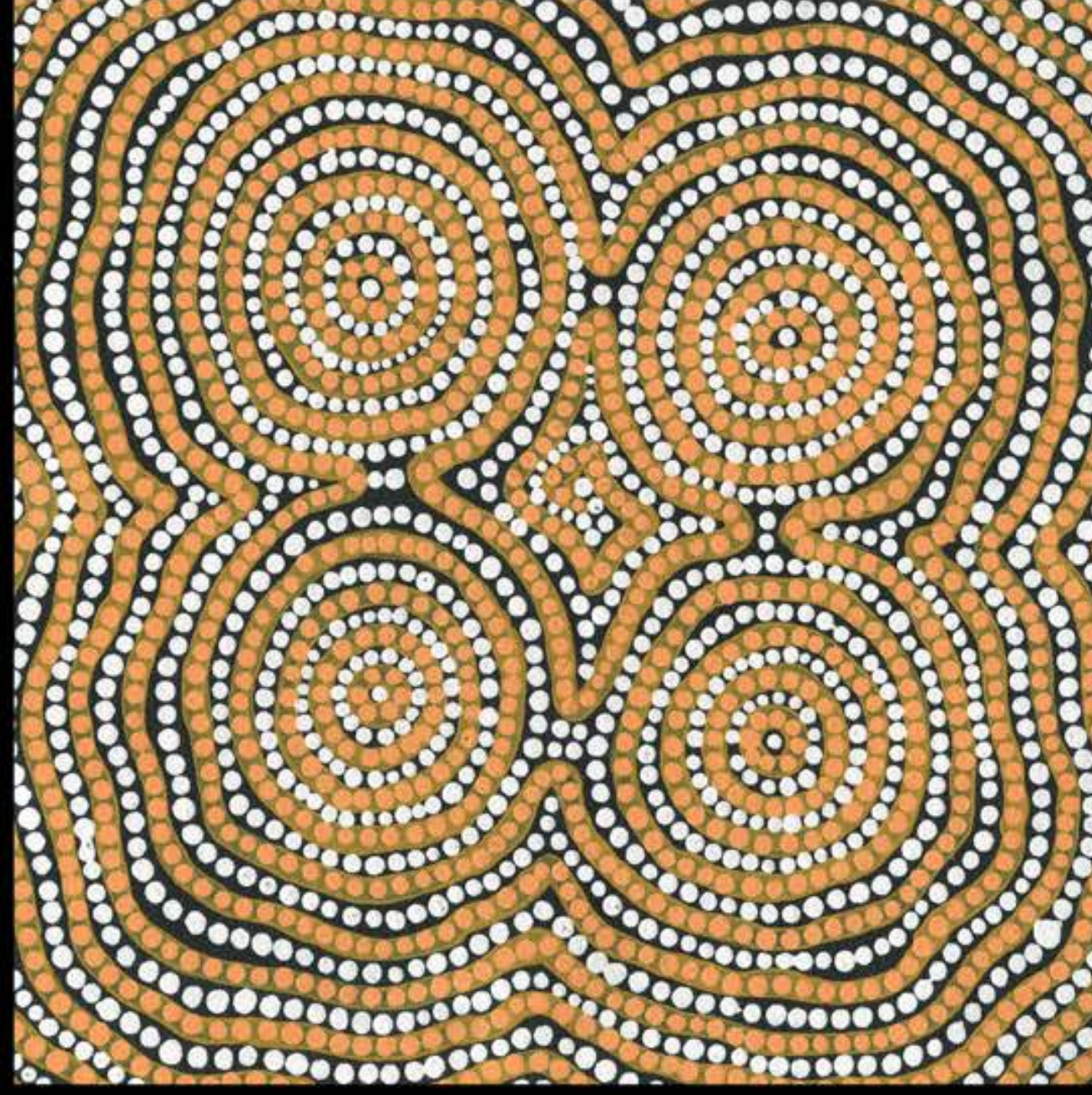
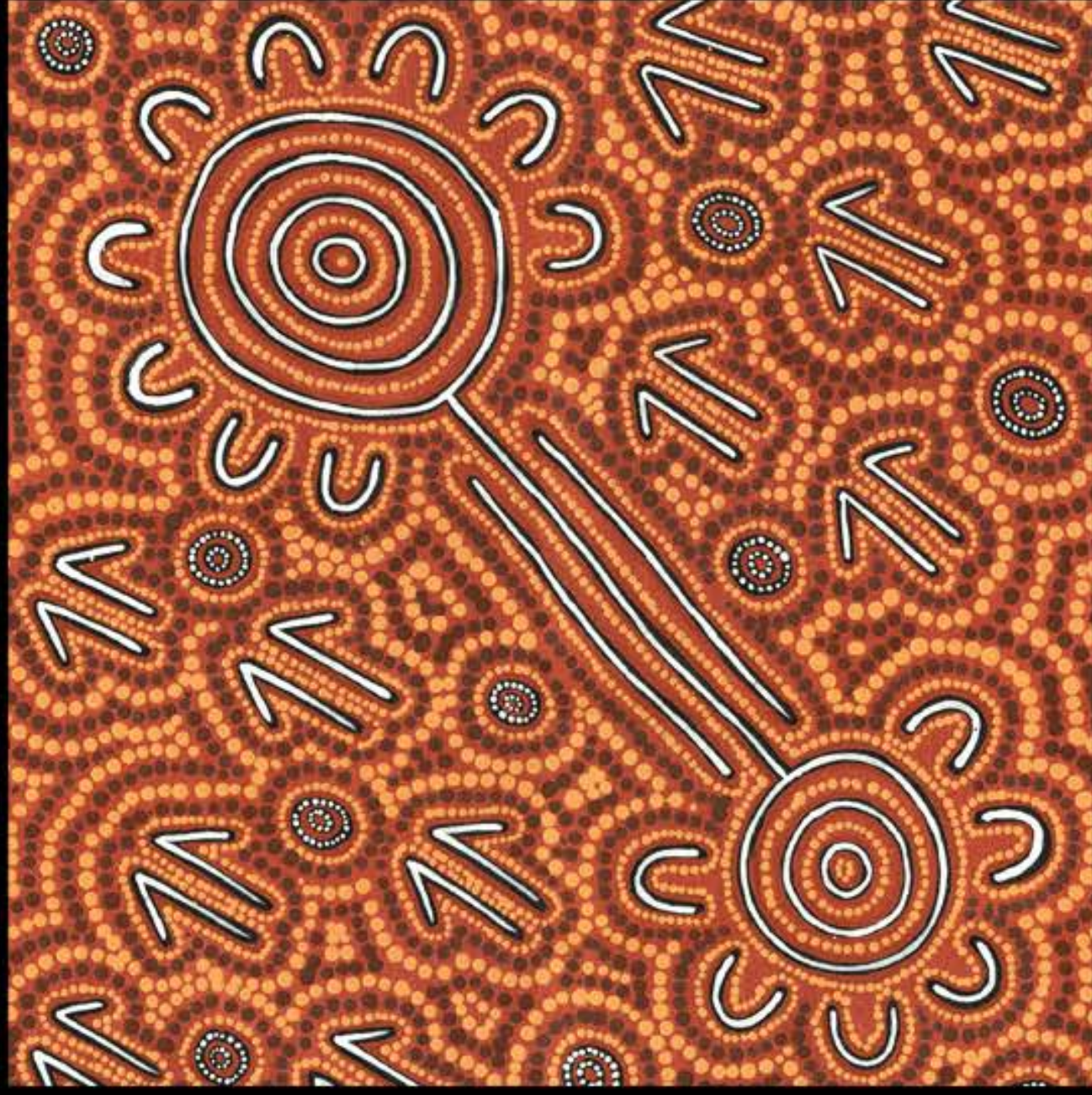
*Image to full scale

Panel size 13.5 x 13.5" / 34 x 34 cm

Fabric Repeat 16" x 43.5" WOF

Ngulbuman (Waterholes)

This painting represents the rivers on country that we have a strong connection with.



Selvage

DV3623

Gulayguli the pelican

When I was little I went fishing out west with my gunhimbang (my mothers brother). I remember asking him "Who is the best fisherman you know?" and he said "there, that's the best fishermen on country". He was talking about the pelican ~ gulayguli.



DV3624 *Image to full scale

Panel size 16x 20" / 40 x 50 cm

Fabric Repeat 18" x 43.5" WOF

Dhuling (Sand Goanna)

This painting represents the sand goanna family.

Selvage



Selvage

Selvage



DV3625

DV3625

Panel Size: 24" x 42.5" / 58 x 108 cm

Fabric Repeat 25" x 43.5" / 63.5 x 110cm WOF

Selvage

Pigeelar (Creation)

This piece represents the creation of our Land,
Lore and Languages

Selvage



DV3626

DV3626

Panel Size: 24" x 42.5" / 58 x 108 cm

Fabric Repeat 25" x 43.5" / 63.5 x 110cm WOF

Selvage

Marbaamarbaa Ngulburman (Colourful Waterholes)

This painting represents the colourful rivers that we connect with on country.



DV3627

DV3627

Panel Size: 24" x 53.5" / 61 x 135cm

Composition: 55% Linen 45% Cotton

Fabric Size: 26" x 54.5" / 66 x 137cm

Selvage

Dhuray (Connection)

This painting represents all the animals from the water having a connection with the animals on the land.



DV3628

DV3628

Fabric Repeat: 29" / 74 cm

Composition: 55% Linen 45% Cotton Width: 54.5" / 137cm

Selvage

Bowerra, Goolbae, Woffhar Yumberra
(Kangaroo, Emu, Crow on Country)

This piece represents the animals on our country

Selvage



DV3629

Selvage

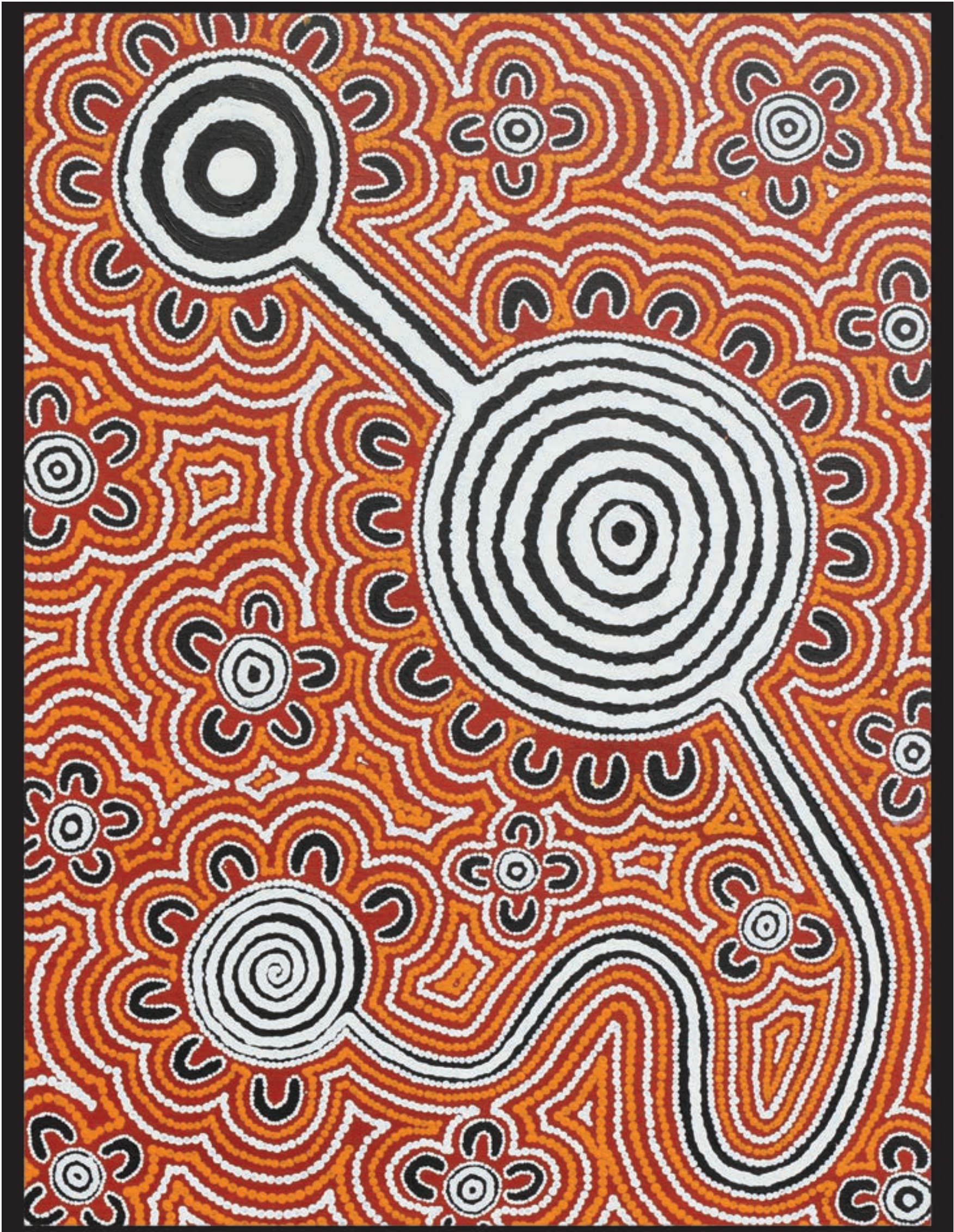
Ngurambang (Home/Country)

Panel Size: 45" x 54.5" / 114 x 138cm

This painting represents my mothers country in South West Queensland; a place I'm strongly connected to.

Fabric Repeat: 47" x 55.5" / 119 x 141cm WOF

Selvage



DV3630

Selvage

Ngurambang (Home/Country)

Panel Size: 41" x 54.5" / 103 x 138cm

This painting is about my connection to my grandmothers country in North Western NSW.

Fabric Repeat: 43" x 55.5" / 108 x 141cm WOF

Selvage



DV3631

Panel Size: 51:" x 54.5" / 130 x 138cm WOF

Fabric Repeat 53.5" x 55.5" / 136 x 141cm WOF

Selvage

Thickibilla (Echidna)

Mother Echidna waiting for her babies