



DesignByThem

SPECIFICATION SHEET

Overlay Rugs

DESIGNED BY

Danielah Martinez

MATERIAL

Hand-tufted 100% New Zealand wool. Made in India.
(Cotton tassels and backing)
Pile Height - 9-12 mm
Weight - 3.5 Kg/m²
Origin - Made in India

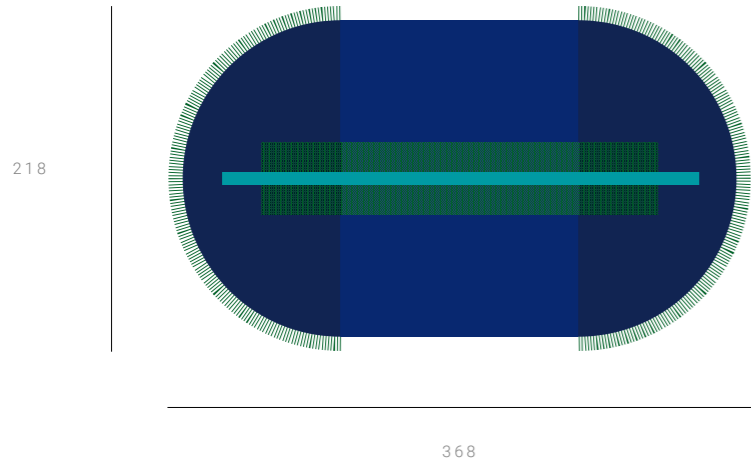
WARRANTY

5 year warranty based on observance of product maintenance procedures. Excludes fair wear and tear, improper use or vandalism.

Dimensions

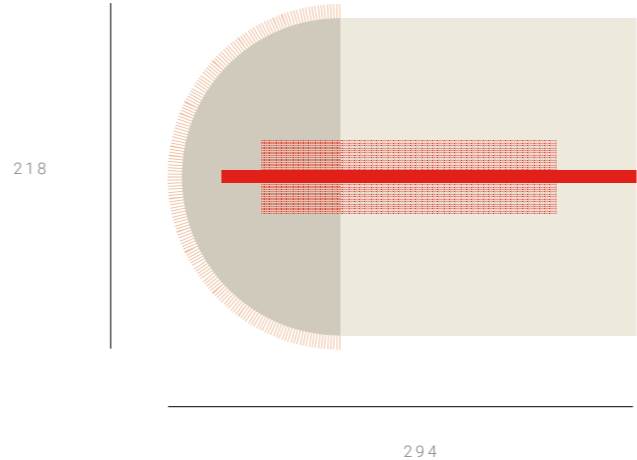
PILL BLUE
OVE-RUG

218 W x 368 L cm (Including Fringe)
Approx. 24kg



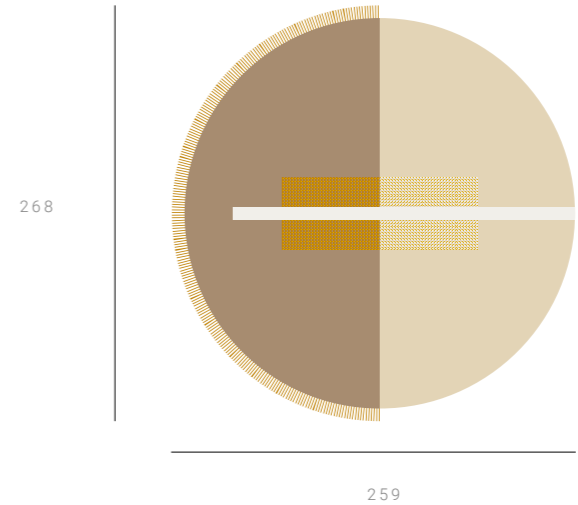
ARCH PEACH
OVE-RUG

218 W x 294 L cm (Including Fringe)
Approx. 21kg



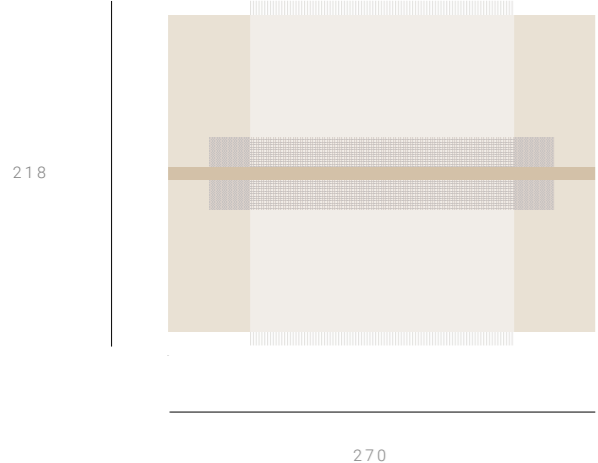
CIRCLE MUSTARD
OVE-RUG

268 W x 259 L cm (Including Fringe)
Approx. 23Kg



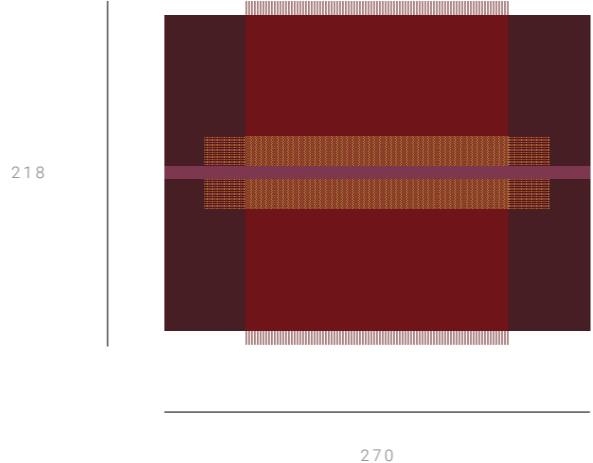
RECTANGLE NEUTRAL
OVE-RUG

218 W x 270 L cm (Including Fringe)
Approx. 23Kg



RECTANGLE BURGUNDY
OVE-RUG

218 W x 270 L cm (Including Fringe)
Approx. 23kg



Note: Please allow +/- 30mm tolerance on all rugs.

CARE & MAINTENANCE

Professional Cleaning

Professional cleaning by an experienced carpet cleaner is recommended at least twice per year or more for high traffic areas.

Dry Cleaning and Washing

Do not wash or machine wash. Do not use bleach, harsh chemicals or scrubs. Do not tumble dry. Do not iron. Do not dry clean. Do not steam clean.

General Stains and Spills

Clean spills and wet spots immediately. Carefully scrape up solids using a soft dustpan and blot with a cold, damp paper towel or white cloth (coloured cloths may bleed and affect the color of the rug).

For any difficult/non-water based stains it is recommended that they are removed by professional cleaners and that an annual cleaning is done.

Vacuuming

For general cleaning, we recommend regularly vacuuming the rug on a gentle-low setting on a weekly basis to prevent dirt and dust build up. When vacuuming, avoid using high suction and do not use a rotating brush head or motorized head.

Shedding

New New Zealand wool rugs with tassels will naturally shed fibres. This is a natural occurrence of the material and not a fault. If your rug experiences any shedding, a light vacuum will remove any loose fibres.

Wear and Tear

To extend the life and appearance of the rug, rotate every six months to spread the wear on the rug.

Sunlight + Colours

For best colour longevity, avoid direct sunlight as prolonged UV exposure may change the colour of your rug.

Storage

Roll the rug carefully with the bottom of the rug on the outside. Do not fold the rug and take care to avoid creasing when storing to prevent damage. Keep rug away from moisture laden areas. Rugs are susceptible to moths and other parasites. Do not use an air sealed bag to store the rug as this may cause moisture to develop.

END OF LIFE

For more information on the DesignByThem Stewardship Program please visit:
www.designbythem.com/stewardship-and-warranty

NOTE

Product specifications are subject to change after date of print at the discretion of DesignByThem. Before placing any orders please confirm all finishes and dimensions with DesignByThem. Images are a guide only.