

DesignByThem

House Materials Handbook

FABRICS & LEATHER ALTERNATIVES



Contents

About This Handbook	3
Why Guides	4
House Fabrics 1 - HF1	5-8
House Fabrics 2 - HF2	9-22
House Fabrics 3 - HF3	23-28
House Fabrics 4 - HF4	29-40
House Fabrics 5 - HF5	41-48
House Fabrics 6 - HF6	49-51
House Fabrics 7 - HF7	52-54
Contact	55



Cover: Sundae Seat in Kvadrat Coda 2 410.
Above: Olio Armchair in Maharam Hearth 466536-001.



Piper Lounge Chair Upholstered in outdoor-friendly Kvadrat Patio 340.

This Handbook

HOW THE HOUSE FABRICS WORK

This handbook is your go-to guide for DesignByThem's house range of fabrics and leather alternatives. Partnering with international textile house Kvadrat Maharam, our goal is to offer upholstery options that are well crafted, versatile and sustainably designed.

The carefully selected fabrics and leather alternatives available for our upholstered products have been categorised into price tiers ranging from **HF1 (lower priced)** - **HF7 (higher priced)**.

CUSTOMERS OWN MATERIAL (COM)

If you would like to specify your own material, that's totally fine. Please advise us by email at trade@designbythem.com.

WARRANTIES

All upholstery material warranties are based on manufacturer's warranty.

Prices subject to change. Images are a guide only and display may vary across devices. Seeing a physical sample is recommended before ordering.

Handy Things To Know

The trusty “Why” Guides to recurring materials in this handbook.

WHY WOOL

Comfortable

Wool is comfortable, as it is soft and breathable. Thanks to its insulating properties and ability to absorb moisture, wool is suitable for both cold and hot climates.

Hard wearing

Woolen fabric is capable of withstanding a high degree of wear and has very little tendency to crease. Wool ages with grace, due to its excellent abrasion resistance and high elasticity.

Dirt repellent

Wool resists dirt to a greater extent than other types of fibres. Wool has a water-repelling surface and permits spills to be wiped off before permanent staining occurs.

Flame retardant

Wool is intrinsically flame retardant as its ignition temperature is very high. It neither drips nor melts, but chars. If a glowing ember from a match or cigarette is dropped on it, there will only be a singed mark, which can typically be brushed off.

Environmental advantages

Being a natural fibre, wool is a renewable source.

WHY RECYCLED POLYESTER

The advantages of recycled polyester Post-industrial recycled polyester is a bi-product of scrap polyester. The scrap polyester is gathered and re-extruded so it can be used and turned into fabric.

The textiles are made using a process that is much more efficient than for virgin polyester:

- Less energy and chemicals are used
- CO2 emissions are minimised



Cabin Armchair and Lounges in Kvadrat Colline 2 0127.

House Fabrics 1 – HF1

HF1 HF2 HF3 HF4 HF5 HF6 HF7

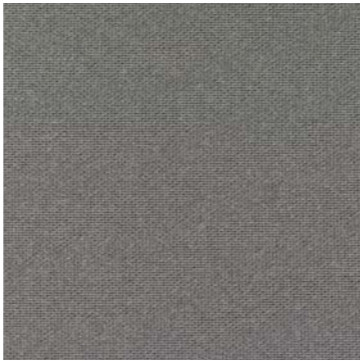
KVADRAT - AUTUMN

Content: 100% recycled polyester
Abrasion: Min. 50.000 Martindale rubs, EN ISO 12947
Lightfastness: Note 6-7 ISO 105-B02
Country of Origin: Turkey

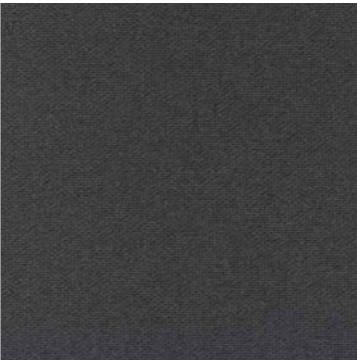
Environmental:
REACH compliant
Californian Proposition 65 list compliant
LBC Red list compliant
Healthier Hospitals compliant
No content of PFCs or 'PFAS'
Mono-material designed for circularity
Recyclable



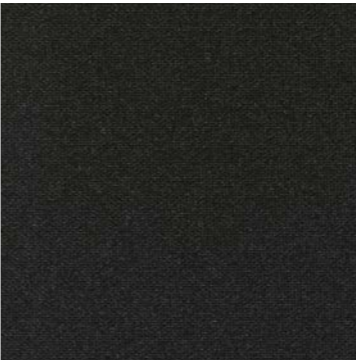
0101



0131



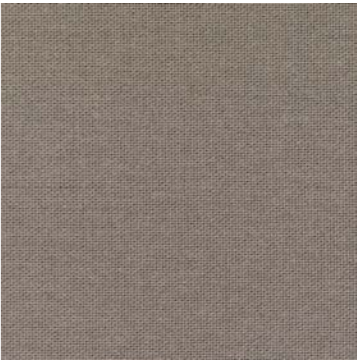
0171



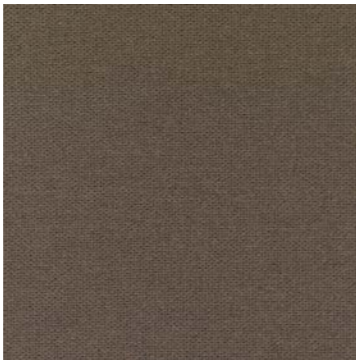
0191



0221



0331



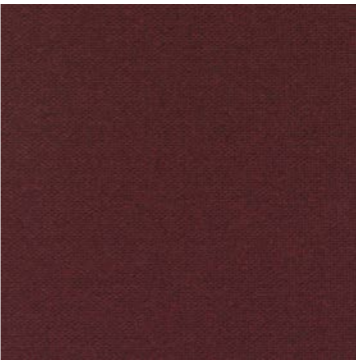
0361



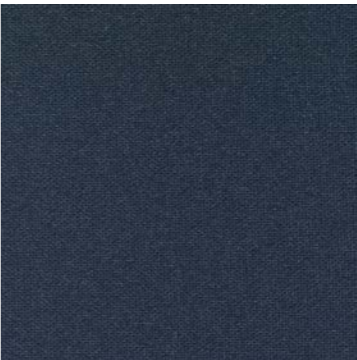
0551



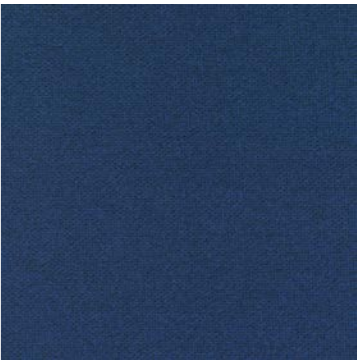
0651



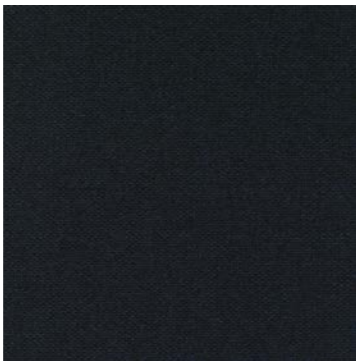
0681



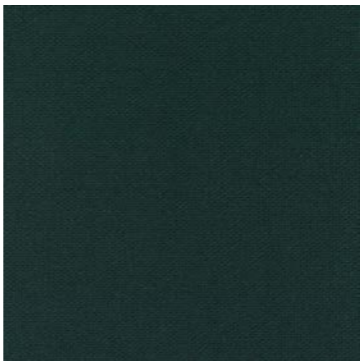
0751



0771



0791



0971

House Fabrics 1 – HF1

HF1 HF2 HF3 HF4 HF5 HF6 HF7

MAHARAM - METAPHOR

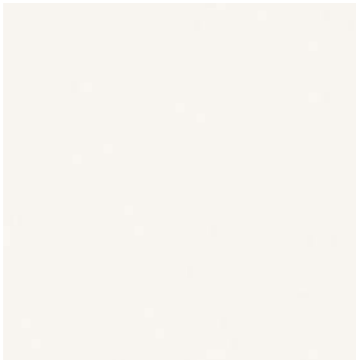
Content: 100% polyester

Abrasion: ASTM D4157,
100,000 double rubs
Wyzenbeek

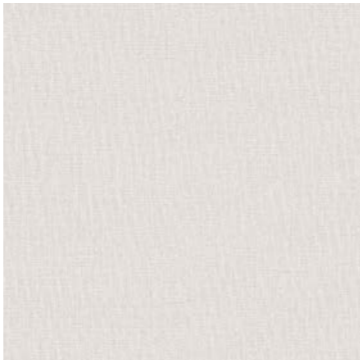
Lightfastness: AATCC 16.3,
40+ hours

Country of Origin: China

Environmental:
Greenguard Gold Certified
Healthier Hospitals Compliant
LBC Red List Free REACH
Compliant FR Free Free of
Intentionally Added PFAS



001 Afterfeather



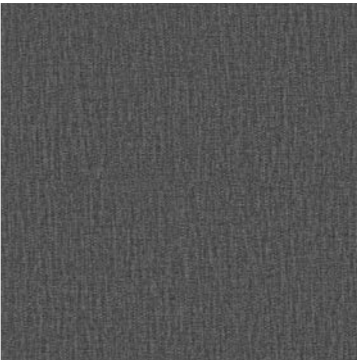
002 Moonflower



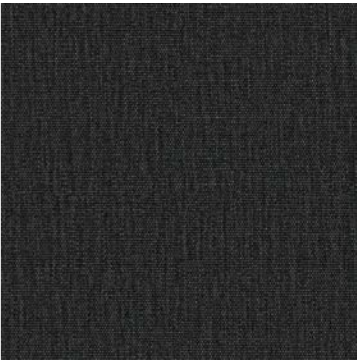
003 Handcraft



004 Crossroad



005 Chondrite



006 Detective



007 Steamship



008 Electricity



009 Takeoff



010 Parachute



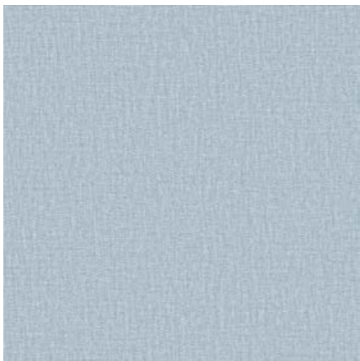
011 Blueshift



012 Dockyard



013 Bathe



014 Icebound



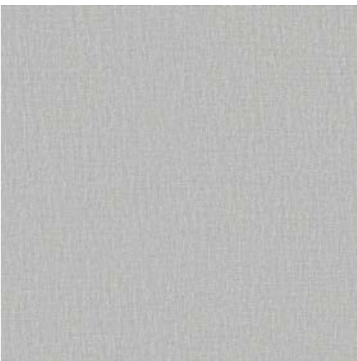
016 Themosphere



017 Aboard



018 Agaware



019 Homeland

House Fabrics 1 – HF1

HF1 HF2 HF3 HF4 HF5 HF6 HF7

MAHARAM - METAPHOR

Content: 100% polyester

Abrasion: ASTM D4157,
100,000 double rubs
Wyzenbeek

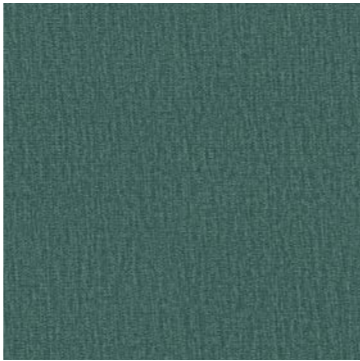
Lightfastness: AATCC 16.3,
40+ hours

Country of Origin: China

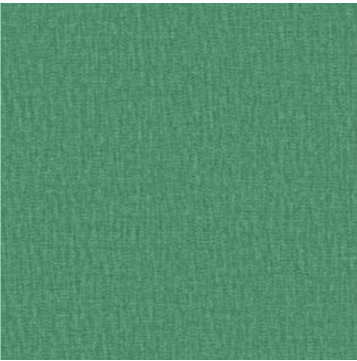
Environmental:
Greenguard Gold Certified
Healthier Hospitals Compliant
LBC Red List Free REACH
Compliant FR Free Free of
Intentionally Added PFAS



019 Rockfall



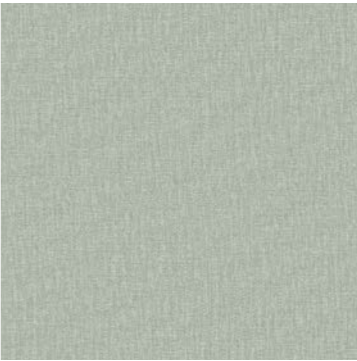
020 Undergrowth



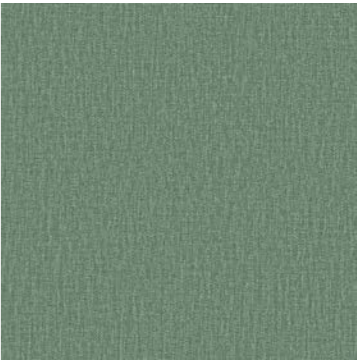
021 Gremolata



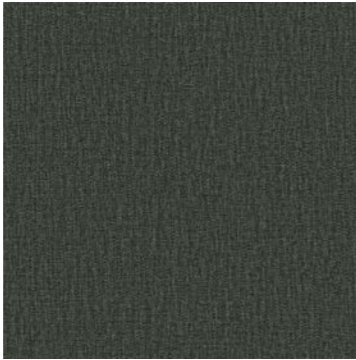
022 Patina



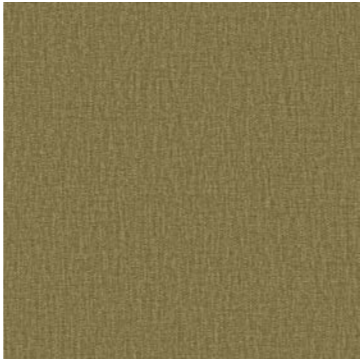
023 Sylvan



024 Outfield



025 Windbreak



026 Saguaro



027 Barnwood



028 Cookshop



029 Amandine



030 Bodhran



031 Centrestage



032 Focaccia



033 Bumblebee



034 Microbrew



035 Sauna



036 Gazebo

House Fabrics 1 – HF1

HF1 HF2 HF3 HF4 HF5 HF6 HF7

MAHARAM - METAPHOR

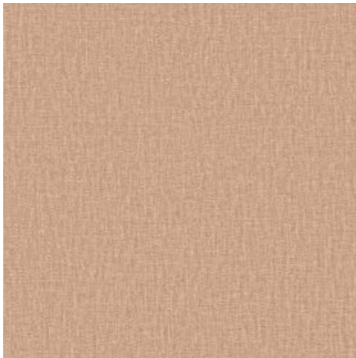
Content: 100% polyester

Abrasion: ASTM D4157,
100,000 double rubs
Wyzenbeek

Lightfastness: AATCC 16.3,
40+ hours

Country of Origin: China

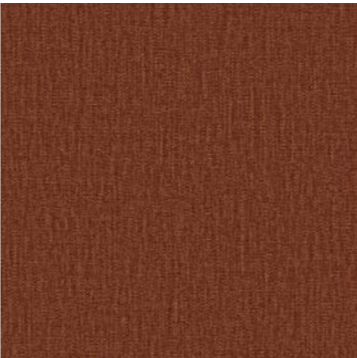
Environmental:
Greenguard Gold Certified
Healthier Hospitals Compliant
LBC Red List Free REACH
Compliant FR Free Free of
Intentionally Added PFAS



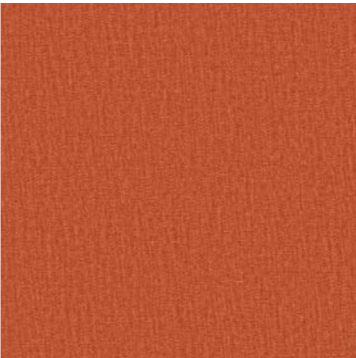
037 Pirouette



038 Heartbeat



039 Shino



040 Sunrise



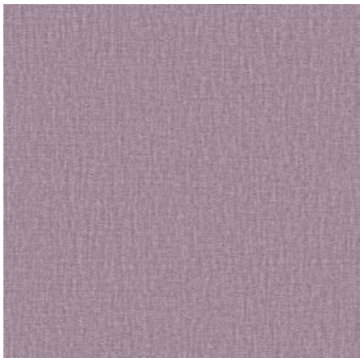
041 Florist



042 Beadwork



043 Framboise



044 Wisteria



045 Warrior

House Fabrics 2 – HF2

HF1 HF2 HF3 HF4 HF5 HF6 HF7

MAHARAM - MESSENGER

Two-Tone Weave

Content: 78% Post-Industrial Recycled Polyester, 15% Polyester, 7% Nylon

Application: Indoor upholstery

Abrasion: 100,000 double rubs Wyzenbeek

Lightfastness: AATCC 16E, 40+ hours

Finish: Stain Repellent

Backing: None

Maintenance: W/S-Clean with water-based cleanser or mild, water-free dry cleaning solvent.

Country of Origin: USA

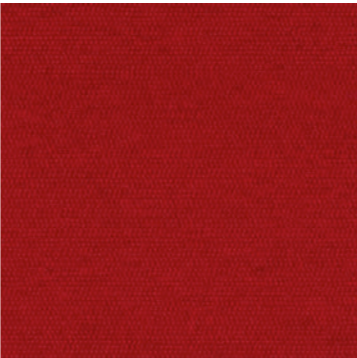
Environmental: Greenguard and Greenguard Gold Certified Contains Recycled Content FR Free REACH Compliant



Shadow 458640-007



Poppy 458640-024



Mao 458640-025



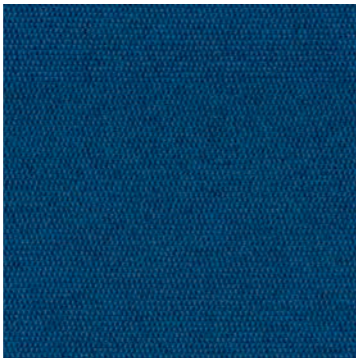
Onyx 458640-029



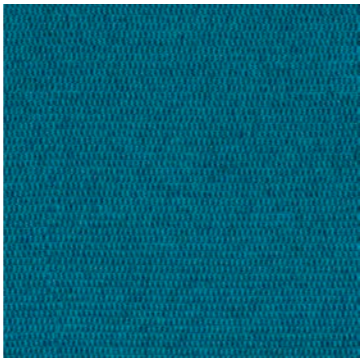
Cloud 458640-031



Depth 458640-038



Nile 458640-040



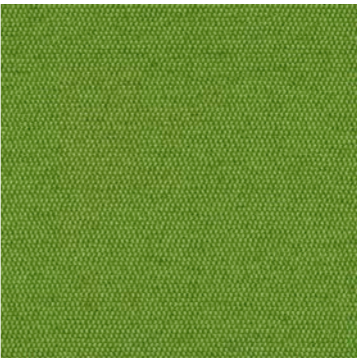
Azure 458640-041



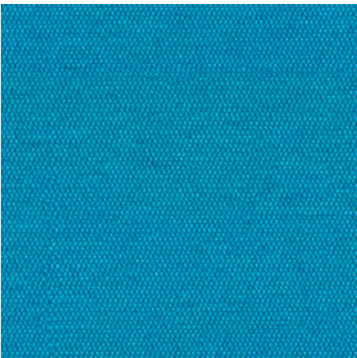
Cactus 458640-045



Ice 458640-046



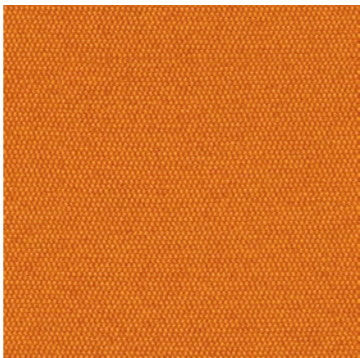
Neon 458640-048



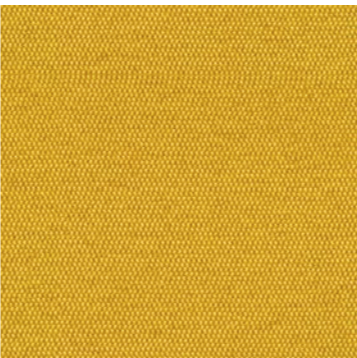
Hydrangea 458640-050



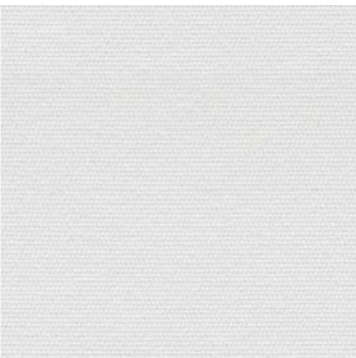
Lilac 458640-051



Tangelo 458640-053



Lumine 458640-054



Snow 458640-058



Peridot 458640-060



Capri 458640-061

House Fabrics 2 – HF2

HF1 HF2 HF3 HF4 HF5 HF6 HF7

MAHARAM - MESSENGER

Two-Tone Weave

Content: 78% Post-Industrial Recycled Polyester, 15% Polyester, 7% Nylon

Application: Indoor upholstery

Abrasion: 100,000 double rubs Wyzenbeek

Lightfastness: AATCC 16E, 40+ hours

Finish: Stain Repellent

Backing: None

Maintenance: W/S-Clean with water-based cleanser or mild, water-free dry cleaning solvent.

Country of Origin: USA

Environmental: Greenguard and Greenguard Gold Certified Contains Recycled Content FR Free REACH Compliant



Ultramarine 458640-062



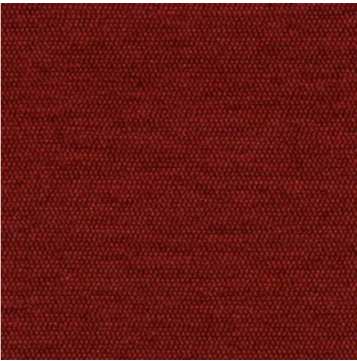
Squall 458640-063



Cassis 458640-066



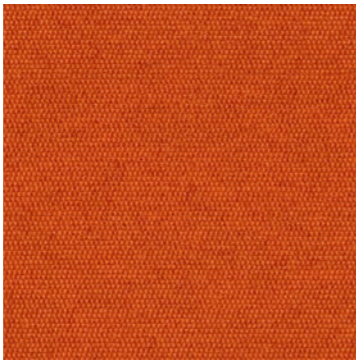
Aster 458640-067



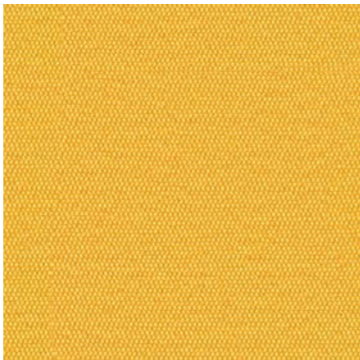
Cherry 458640-069



Vibrant 458640-070



Satsuma 458640-071



Maize 458640-072



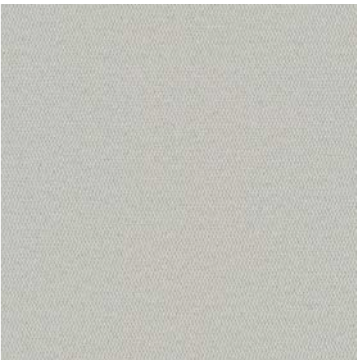
Fossil 458640-076



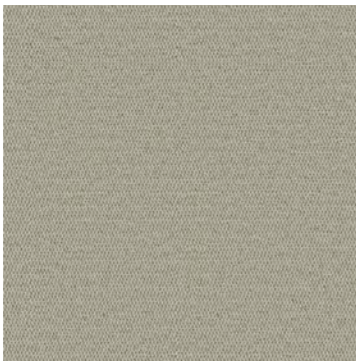
Ash 458640-077



Tusk 458640-078



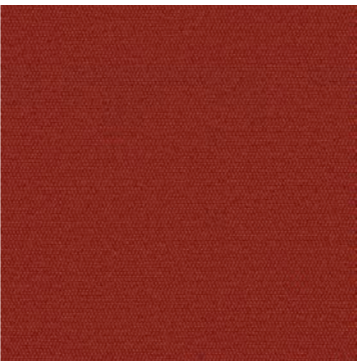
Oyster 458640-079



Pensive 458640-080



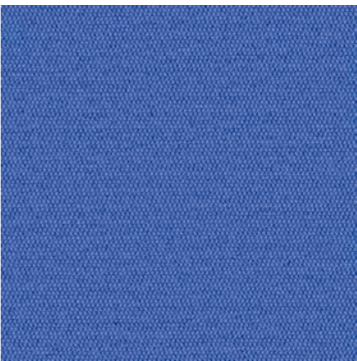
Husk 458640-081



Chili 458640-083



Robust 458640-084



Beyond 458640-085



Voyage 458640-086

House Fabrics 2 – HF2

HF1 HF2 HF3 HF4 HF5 HF6 HF7

MAHARAM - MESSENGER

Two-Tone Weave

Content: 78% Post-Industrial Recycled Polyester, 15% Polyester, 7% Nylon

Application: Indoor upholstery

Abrasion: 100,000 double rubs Wyzenbeek

Lightfastness: AATCC 16E, 40+ hours

Finish: Stain Repellent

Backing: None

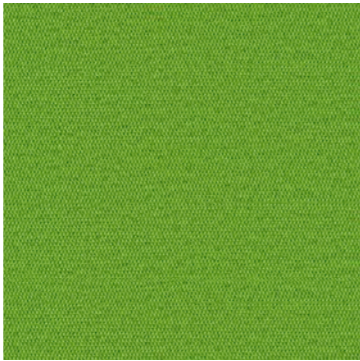
Maintenance: W/S-Clean with water-based cleanser or mild, water-free dry cleaning solvent.

Country of Origin: USA

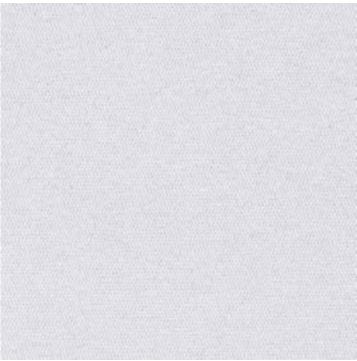
Environmental: Greenguard and Greenguard Gold Certified Contains Recycled Content FR Free REACH Compliant



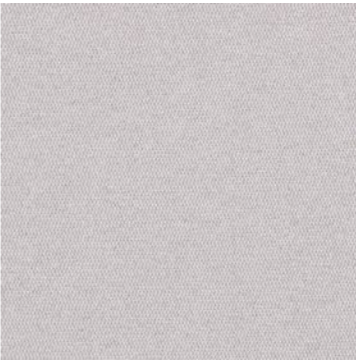
Everglade 458640-087



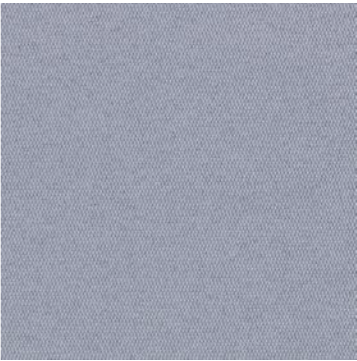
Electric 458640-088



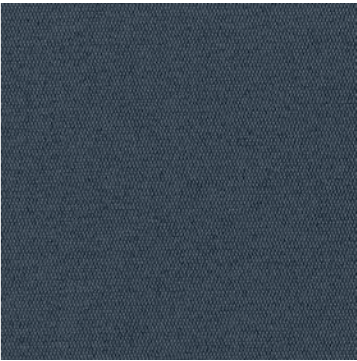
Blanch 458640-089



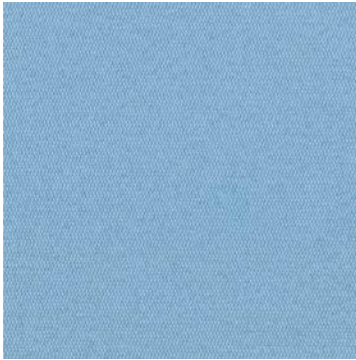
Longspur 458640-090



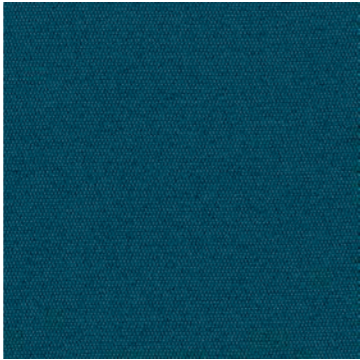
Vireo 458640-091



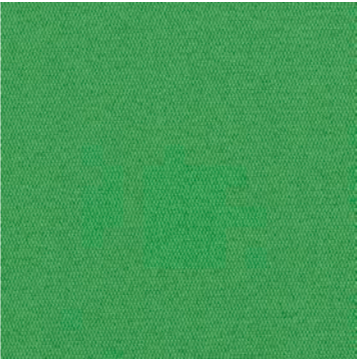
Dipper 458640-092



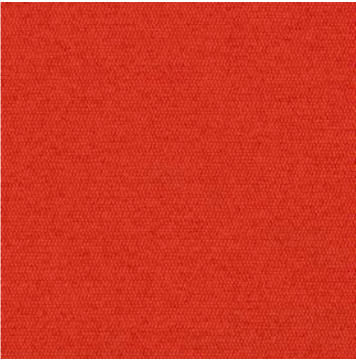
Gale 458640-093



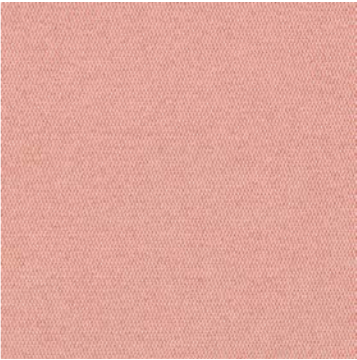
Hunter 458640-094



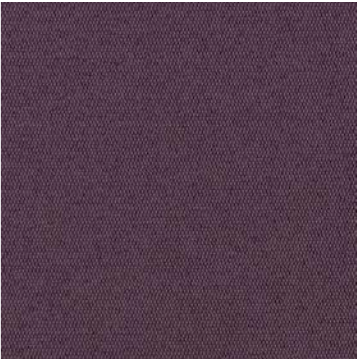
Lime 458640-095



Apple 458640-096



Krill 458640-097



Catalyst 458640-098

House Fabrics 2 – HF2

HF1 HF2 HF3 HF4 HF5 HF6 HF7

MAHARAM - MODE

Marled Weave

Content: 80% Post-Consumer Recycled Polyester, 20% Polyester

Application: Indoor upholstery

Abrasion: 100,000 double rubs Wyzenbeek

Lightfastness: AATCC 16E, 40+ hours

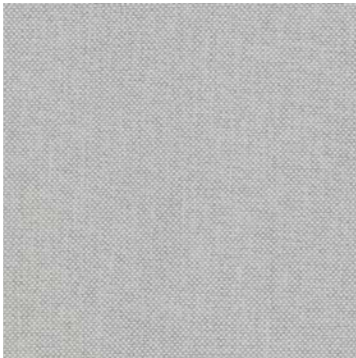
Finish: Stain Repellent

Backing: None

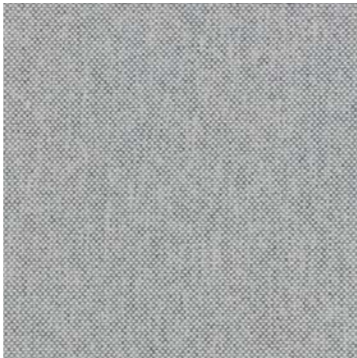
Maintenance: W/S-Clean with water-based cleanser or mild, water-free dry cleaning solvent.

Country of Origin: USA

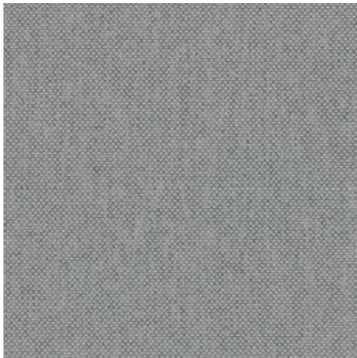
Environmental: Greenguard and Greenguard Gold Certified GRS Certified REACH Compliant Contains Recycled Content FR Free



Stroll 466337-001



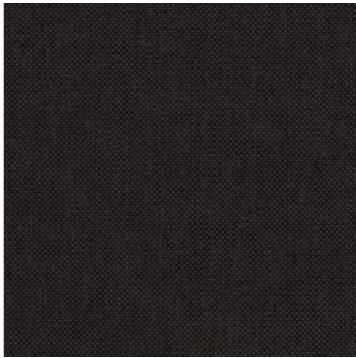
Intaglio 466337-002



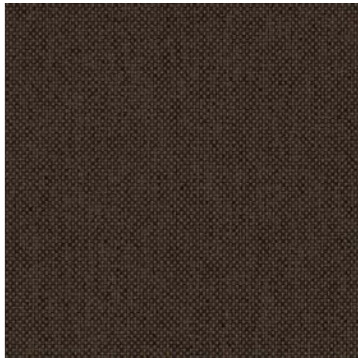
Ominous 466337-003



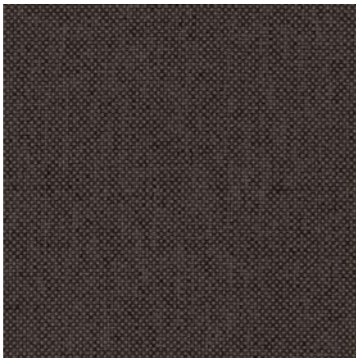
Machine 466337-004



Talus 466337-005



Marsh 466337-006



Hollow 466337-007



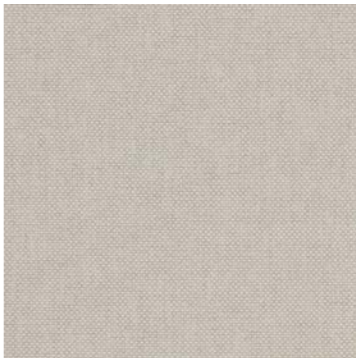
Sycamore 466337-008



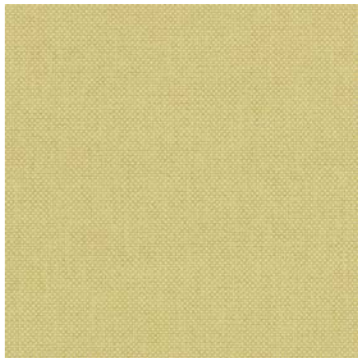
Clavicle 466337-009



Billygoat 466337-010



Spindle 466337-011



Lemon 466337-012



Oxeye 466337-013



Henge 466337-014



Goldenrod 466337-015



Cottontail 466337-016



Lioness 466337-017



Oriole 466337-018

House Fabrics 2 – HF2

HF1 HF2 HF3 HF4 HF5 HF6 HF7

MAHARAM - MODE

Marled Weave

Content: 80% Post-Consumer Recycled Polyester, 20% Polyester

Application: Indoor upholstery

Abrasion: 100,000 double rubs Wyzenbeek

Lightfastness: AATCC 16E, 40+ hours

Finish: Stain Repellent

Backing: None

Maintenance: W/S-Clean with water-based cleanser or mild, water-free dry cleaning solvent.

Country of Origin: USA

Environmental: Greenguard and Greenguard Gold Certified GRS Certified REACH Compliant Contains Recycled Content FR Free



Rust 466337-019



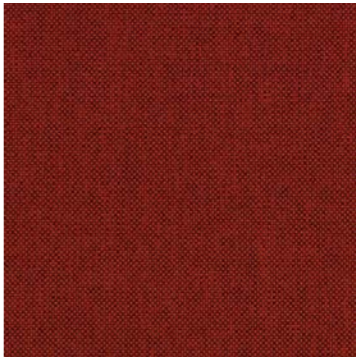
Carotene 466337-020



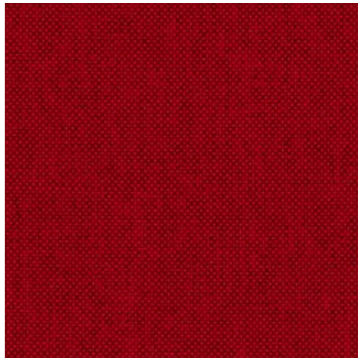
Blush 466337-021



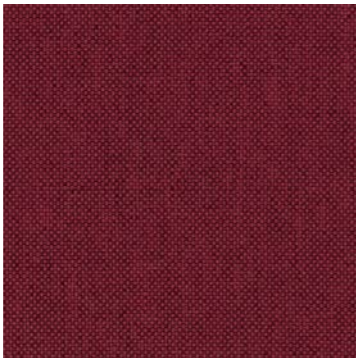
Vermilion 466337-022



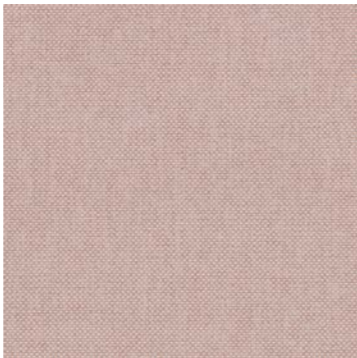
Alder 466337-023



Kermes 466337-024



Barberry 466337-025



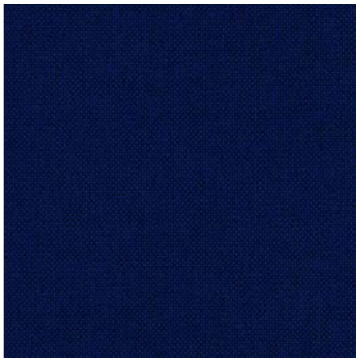
Petal 466337-026



Valley 466337-027



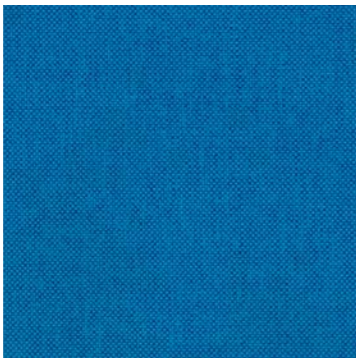
Odyssey 466337-028



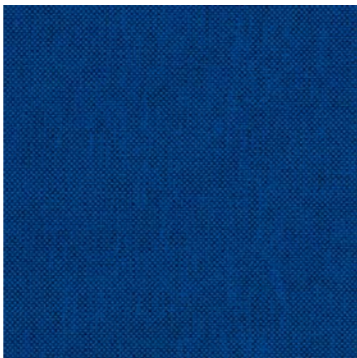
Ballpoint 466337-029



Toile 466337-030



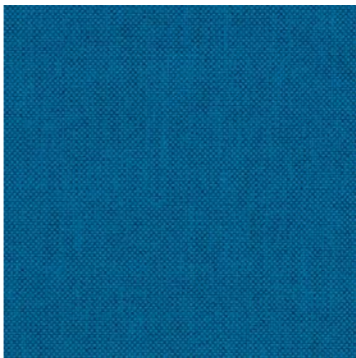
Paradise 466337-031



Angelfish 466337-032



Denim 466337-033



Crush 466337-034



Jetty 466337-035



Saltwater 466337-036

House Fabrics 2 – HF2

HF1 HF2 HF3 HF4 HF5 HF6 HF7

MAHARAM - MODE

Marled Weave

Content: 80% Post-Consumer Recycled Polyester, 20% Polyester

Application: Indoor upholstery

Abrasion: 100,000 double rubs Wyzenbeek

Lightfastness: AATCC 16E, 40+ hours

Finish: Stain Repellent

Backing: None

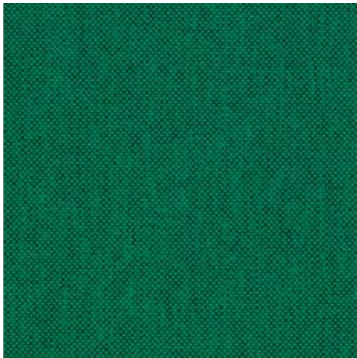
Maintenance: W/S-Clean with water-based cleanser or mild, water-free dry cleaning solvent.

Country of Origin: USA

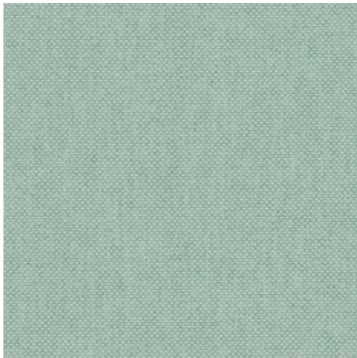
Environmental: Greenguard and Greenguard Gold Certified GRS Certified REACH Compliant Contains Recycled Content FR Free



Mallard 466337-037



Celtic 466337-038



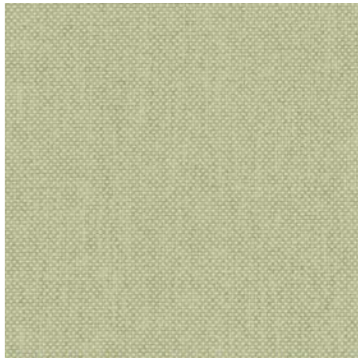
Eucalyptus 466337-039



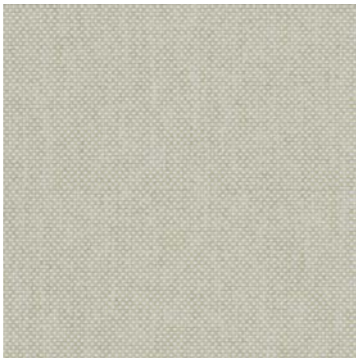
Bonsai 466337-040



Sassafras 466337-041



Yucca 466337-042



Lichen 466337-043

House Fabrics 2 – HF2

HF1 HF2 HF3 HF4 HF5 HF6 HF7

MAHARAM - MERIT

Content: 76% Post-Consumer Recycled Polyester, 24% Polyester

Application: Indoor upholstery

Abrasion: 100,000 double rubs Wyzenbeek

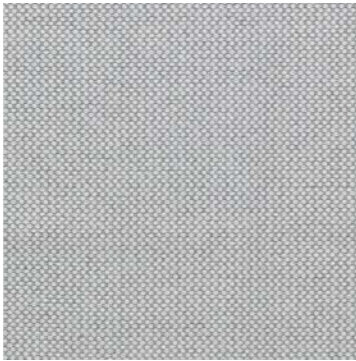
Lightfastness: AATCC 16E, 40+ hours

Finish: Stain Repellent

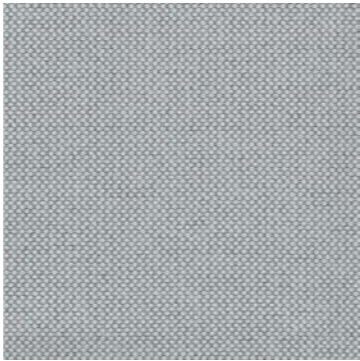
Maintenance: Vacuuming and dry cleaning if fixed covers. W/S-Clean with water-based cleanser or mild, water-free dry cleaning solvent.

Country of Origin: USA

Environmental: Greenguard and Greenguard Gold Certified GRS Certified REACH Compliant Contains Recycled Content FR Free



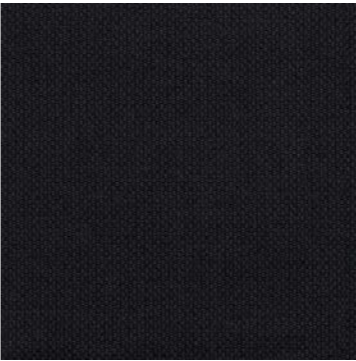
0001



0002



0003



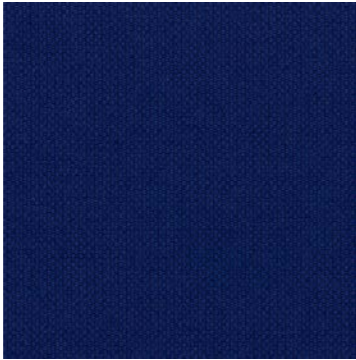
0004



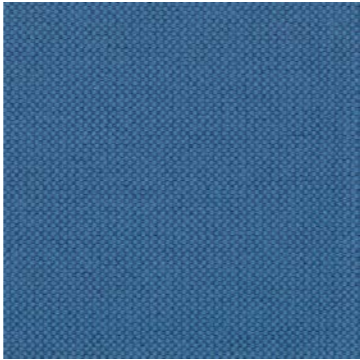
0005



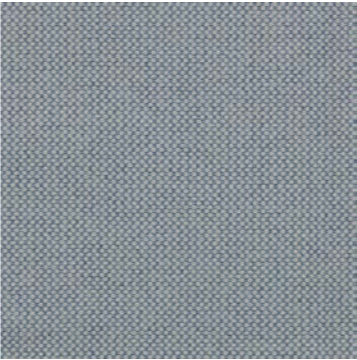
0006



0007



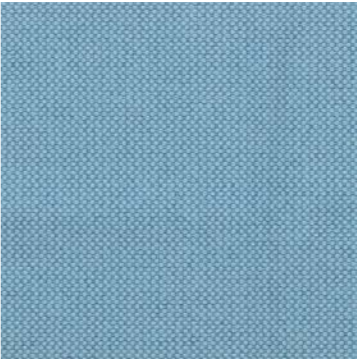
0008



0009



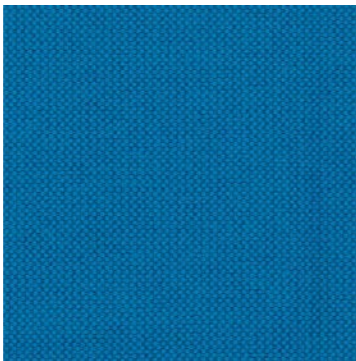
0010



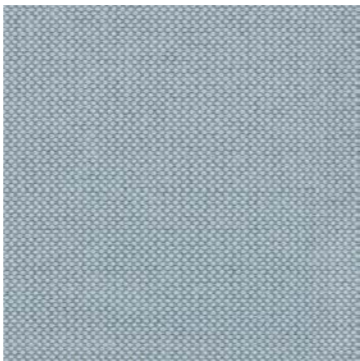
0011



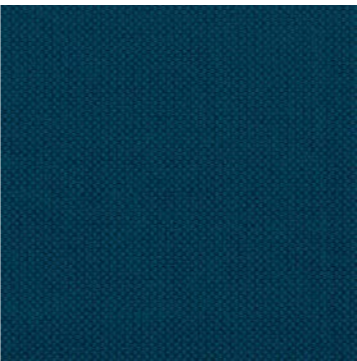
0012



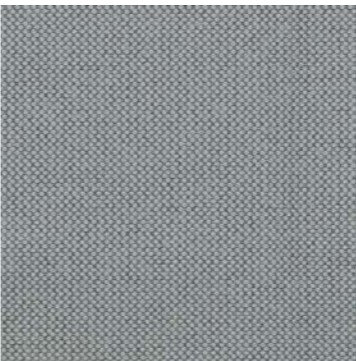
0013



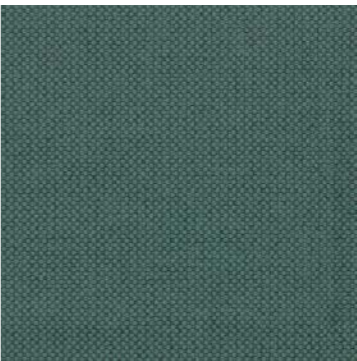
0014



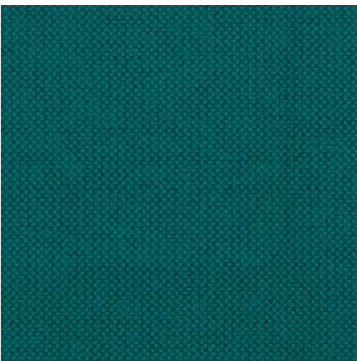
0015



0016



0017



0018

House Fabrics 2 – HF2

HF1 HF2 HF3 HF4 HF5 HF6 HF7

MAHARAM - MERIT

Content: 76% Post-Consumer Recycled Polyester, 24% Polyester

Application: Indoor upholstery

Abrasion: 100,000 double rubs Wyzenbeek

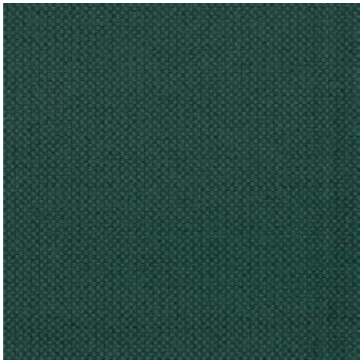
Lightfastness: AATCC 16E, 40+ hours

Finish: Stain Repellent

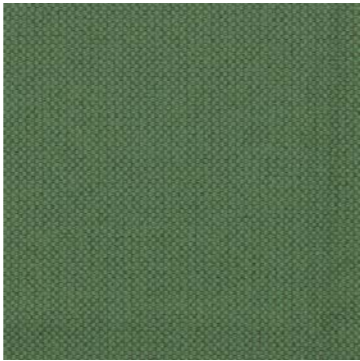
Maintenance: Vacuuming and dry cleaning if fixed covers. W/S-Clean with water-based cleanser or mild, water-free dry cleaning solvent.

Country of Origin: USA

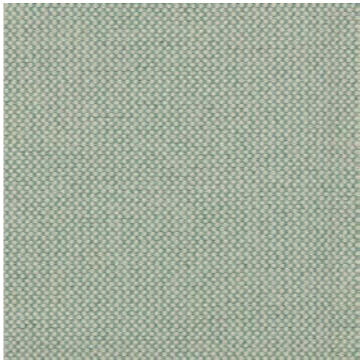
Environmental: Greenguard and Greenguard Gold Certified GRS Certified REACH Compliant Contains Recycled Content FR Free



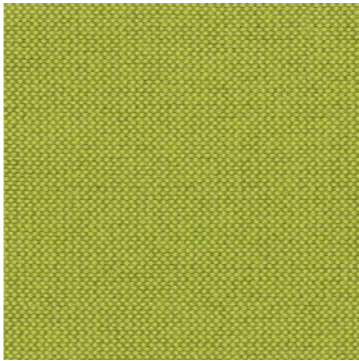
0019



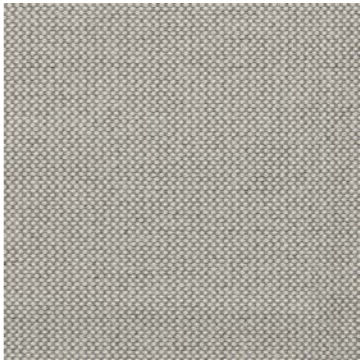
0020



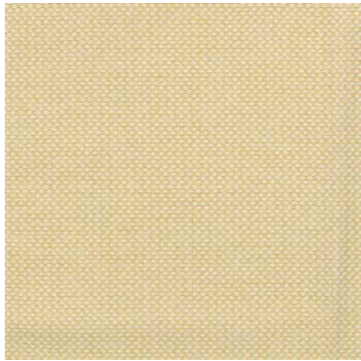
0021



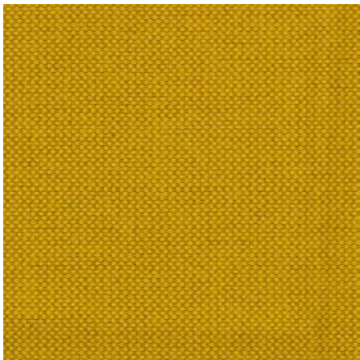
0022



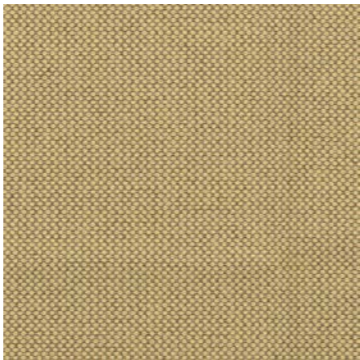
0023



0024



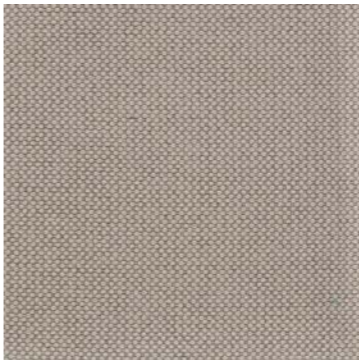
0025



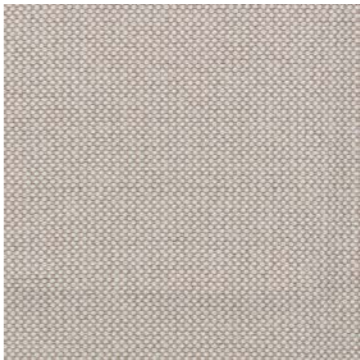
0026



0027



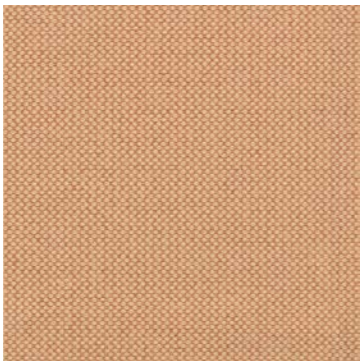
0028



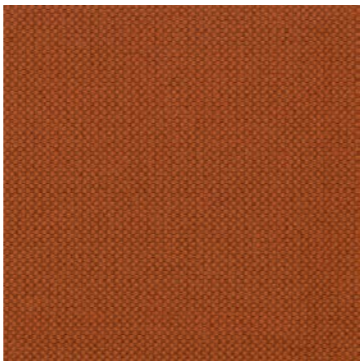
0029



0030



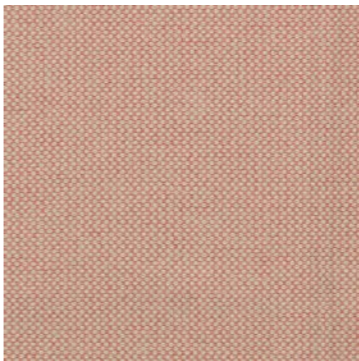
0031



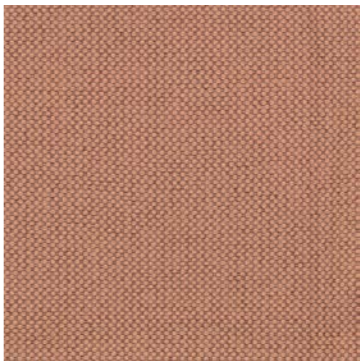
0032



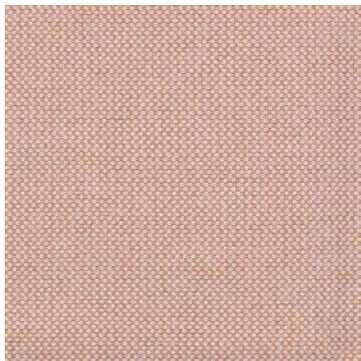
0033



0034



0035



0036

House Fabrics 2 – HF2

HF1 HF2 HF3 HF4 HF5 HF6 HF7

MAHARAM - MERIT

Content: 76% Post-Consumer Recycled Polyester, 24% Polyester

Application: Indoor upholstery

Abrasion: 100,000 double rubs Wyzenbeek

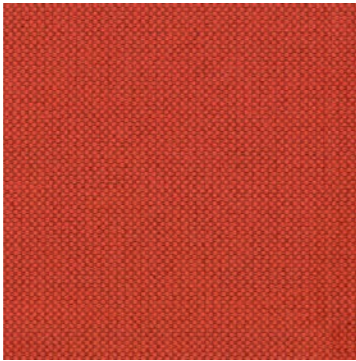
Lightfastness: AATCC 16E, 40+ hours

Finish: Stain Repellent

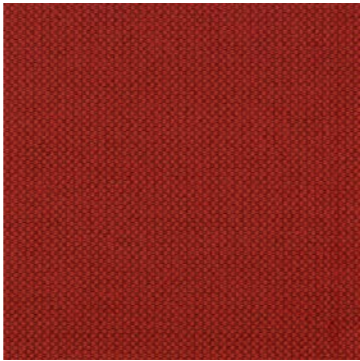
Maintenance: Vacuuming and dry cleaning if fixed covers. W/S-Clean with water-based cleanser or mild, water-free dry cleaning solvent.

Country of Origin: USA

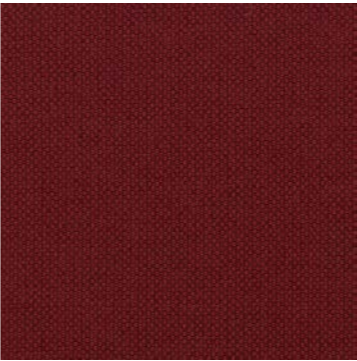
Environmental: Greenguard and Greenguard Gold Certified GRS Certified REACH Compliant Contains Recycled Content FR Free



0037



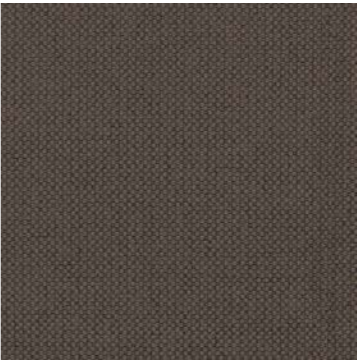
0038



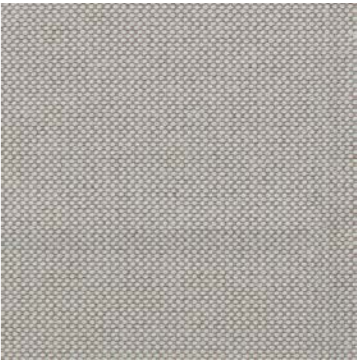
0039



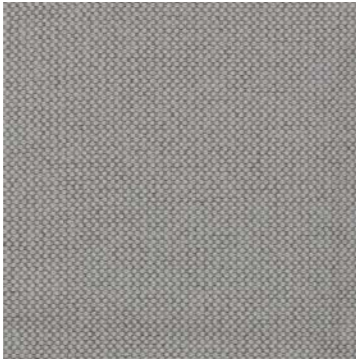
0040



0041



0042



0043

House Fabrics 2 – HF2

HF1 HF2 HF3 HF4 HF5 HF6 HF7

MAHARAM - LARIAT (VINYL)

Indoor Leather Alternative
Textured

Content: 100% Non-Phthalate
Vinyl

Application: Indoor upholstery

Abrasion: 140,000 double rubs
Wyzenbeek

Lightfastness: AATCC 16E,
200+ hours

Finish: Protective Topcoat

Backing: Polyester

Maintenance: W/B-Clean
with water-based cleanser or
diluted household bleach.

Country of Origin: China

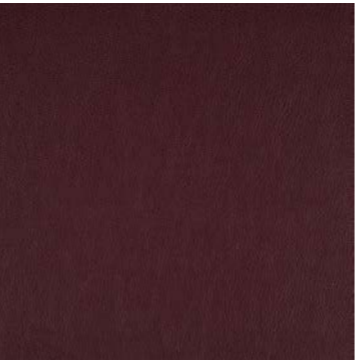
Environmental:
Non-Phthalate Vinyl
FR Free
PFAS-Free



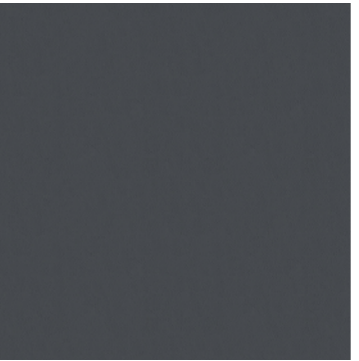
Camel 440401-001



Russet 440401-002



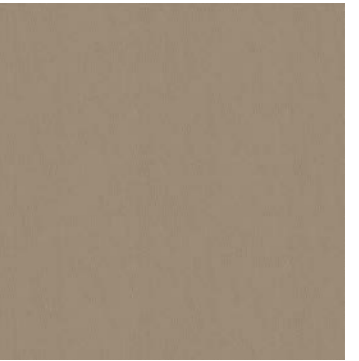
Brick Red 440401-003



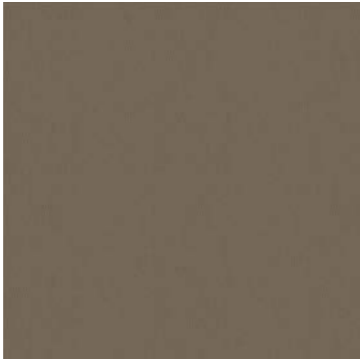
Indigo 440401-004



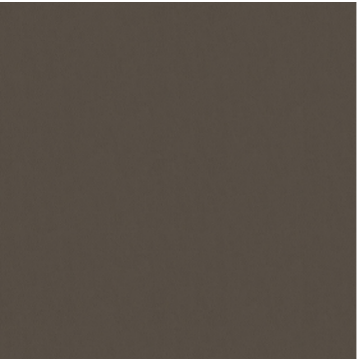
Black 440401-006



Oyster 440401-007



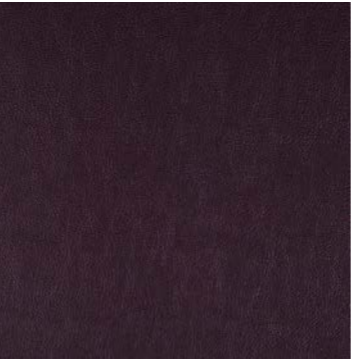
Fern 440401-008



Taupe 440401-010



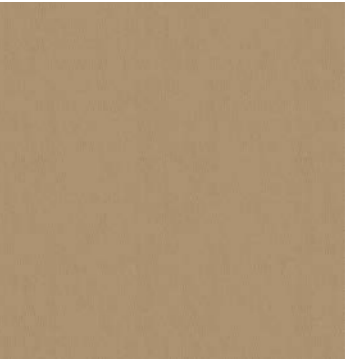
Chocolate 440401-011



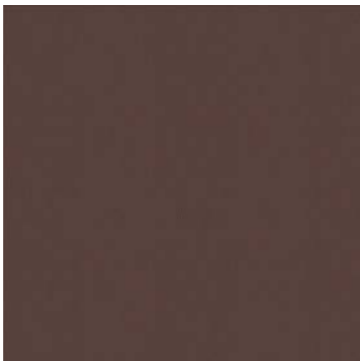
Oxblood 440401-012



Ivory 440401-013



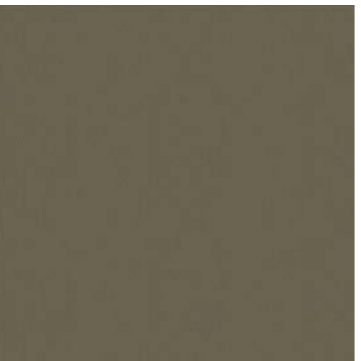
Sand 440401-014



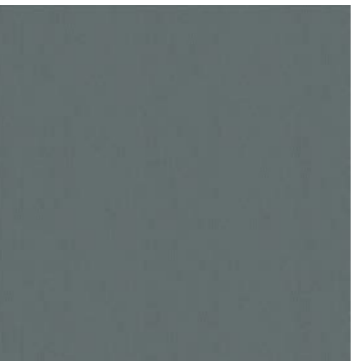
Mahogany 440401-015



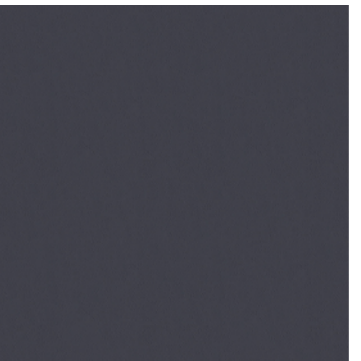
Pebble 440401-016



Fatigue 440401-018



Lake 440401-020



Navy 440401-021



Cumin 440401-023

House Fabrics 2 – HF2

HF1 HF2 HF3 HF4 HF5 HF6 HF7

MAHARAM - LARIAT (VINYL)

Indoor Leather Alternative
Textured

Content: 100% Vinyl

Application: Indoor upholstery

Abrasion: 140,000 double rubs
Wyzenbeek

Lightfastness: AATCC 16E,
200+ hours

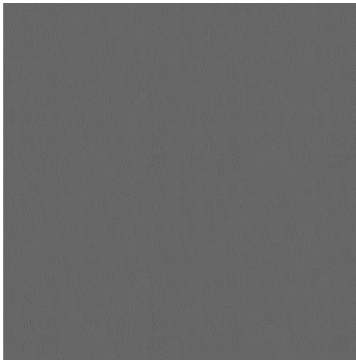
Finish: Protective Topcoat

Backing: Polyester

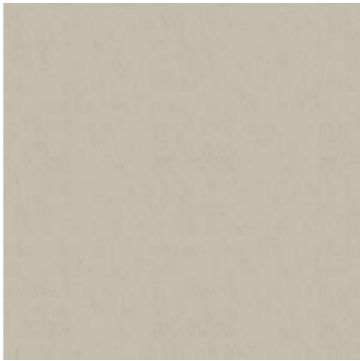
Maintenance: W/B-Clean
with water-based cleanser or
diluted household bleach.

Country of Origin: China

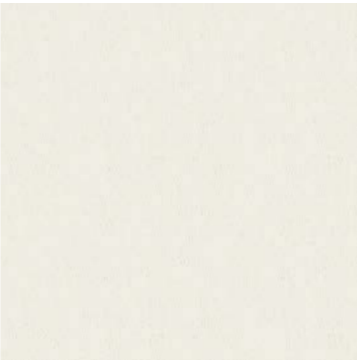
Environmental:
Non-Phthalate Vinyl
FR Free
PFAS-Free



Zinc 440401-024



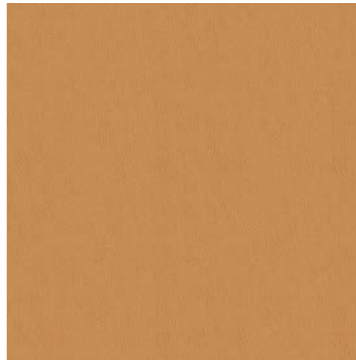
Alabaster 440401-025



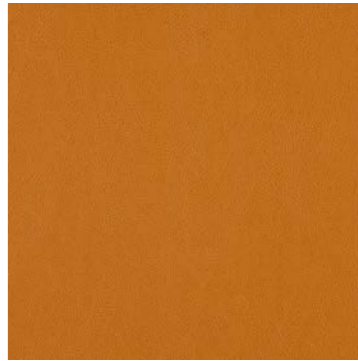
Snow 440401-026



Straw 440401-027



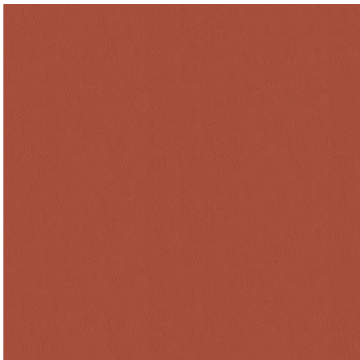
Tamarind 440401-028



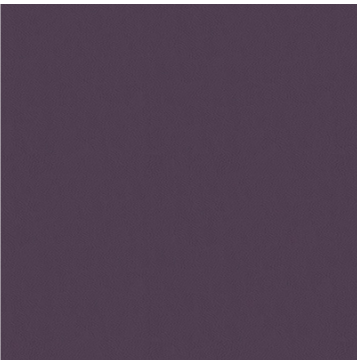
Yam 440401-029



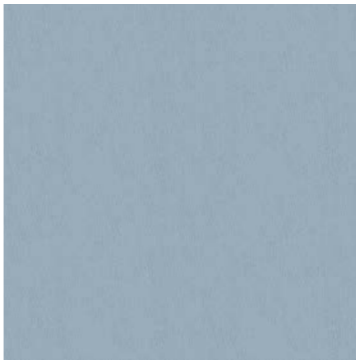
Pepper 440401-030



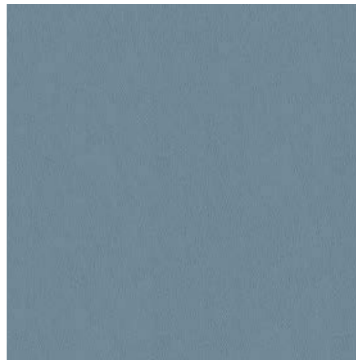
Auburn 440401-031



Plum 440401-032



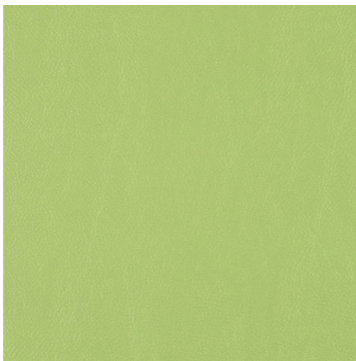
Cornflower 440401-033



Macaw 440401-034



Cucumber 440401-036



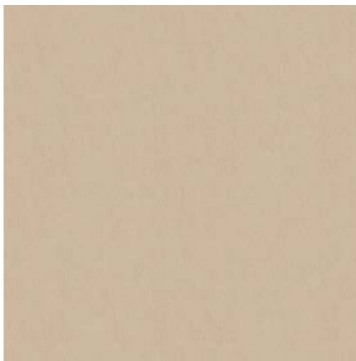
Peridot 440401-037



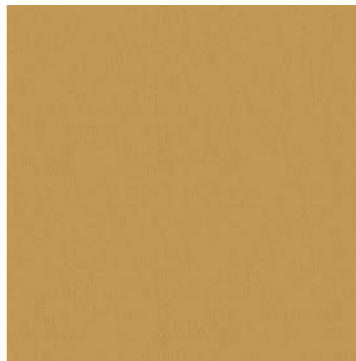
Reptile 440401-038



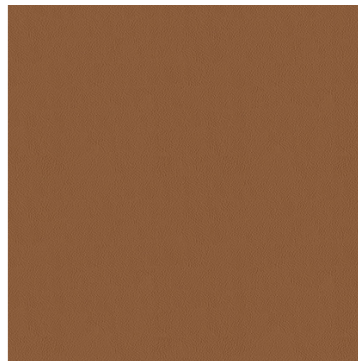
Granite 440401-039



Linen 440401-040



Stella 440401-041



Saddle 440401-042

House Fabrics 2 – HF2

HF1 HF2 HF3 HF4 HF5 HF6 HF7

MAHARAM - LARIAT (VINYL)

Indoor Leather Alternative
Textured

Content: 100% Vinyl

Application: Indoor upholstery

Abrasion: 140,000 double rubs
Wyzenbeek

Lightfastness: AATCC 16E,
200+ hours

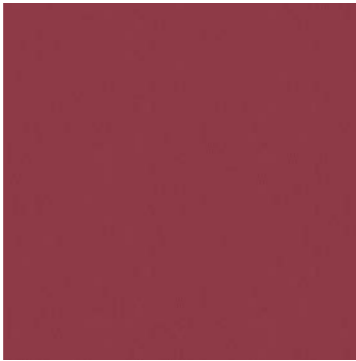
Finish: Protective Topcoat

Backing: Polyester

Maintenance: W/B-Clean
with water-based cleanser or
diluted household bleach.

Country of Origin: China

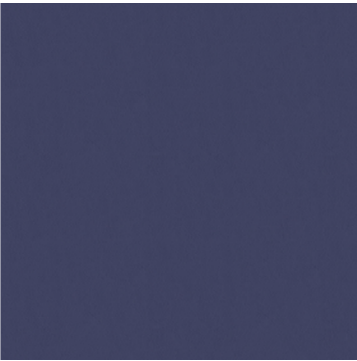
Environmental:
Non-Phthalate Vinyl
FR Free
PFAS-Free



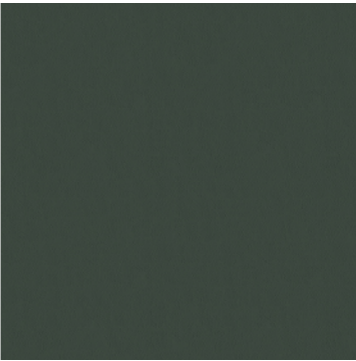
Holly 440401-043



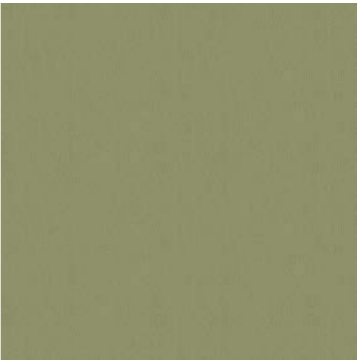
Maroon 440401-044



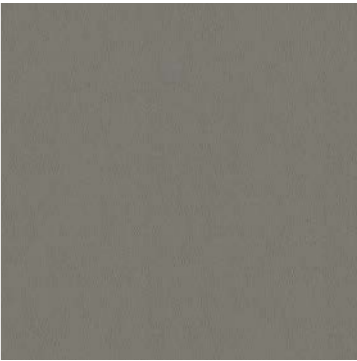
Siren 440401-045



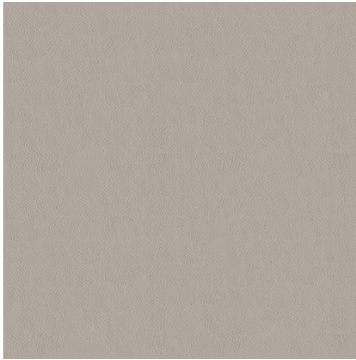
Reseda 440401-046



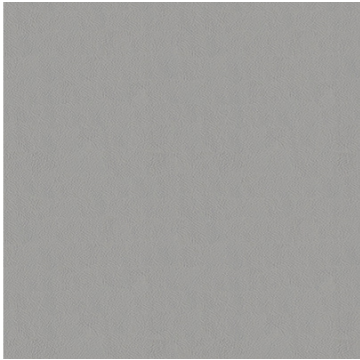
Purslane 440401-047



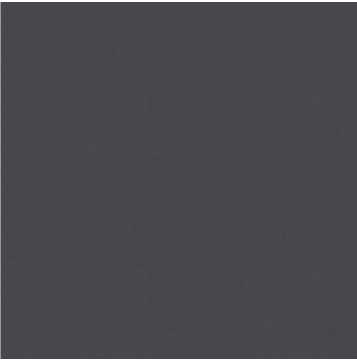
Spire 440401-048



Papyrus 440401-049



Chickadee 440401-051



Requiem 440401-051

House Fabrics 2 – HF2

HF1 HF2 HF3 HF4 HF5 HF6 HF7

KVADRAT - SPORT

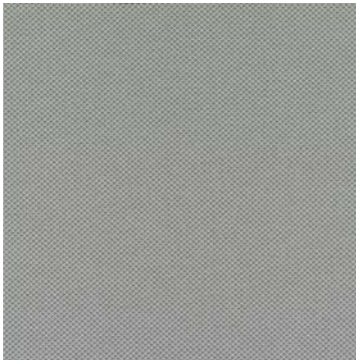
Content: 100% ocean bound polyester

Abrasion: Approx. 40.000 Martindale rubs, EN ISO 12947

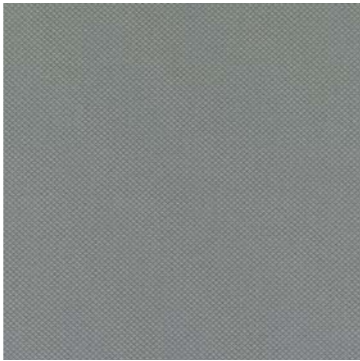
Lightfastness: Note 6-7 ISO 105-B02

Country of Origin: Holland

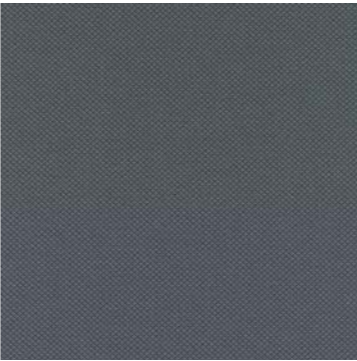
Environmental:
Recycled content
Follow the EU Ecolabel dye restrictions incl. AZO dye and heavy metal restrictions
REACH compliant
Californian Proposition 65 list compliant
LBC Red list compliant
Healthier Hospitals compliant
Mono-material designed for circularity
Recyclable



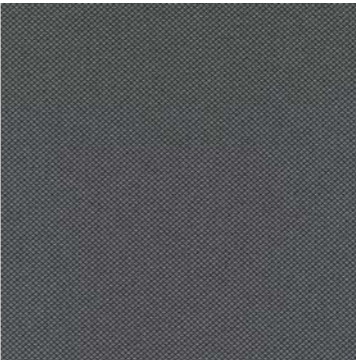
0113



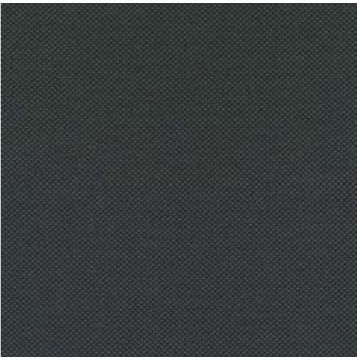
0123



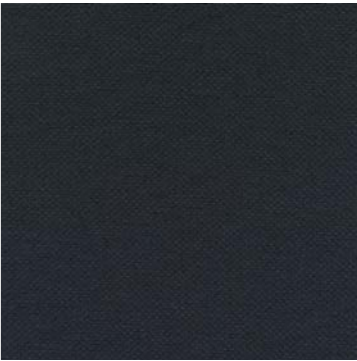
0133



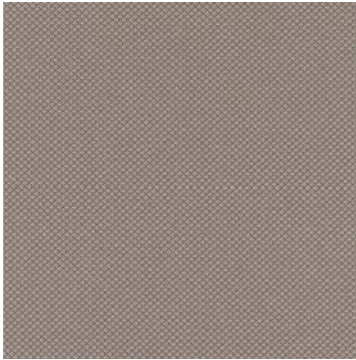
0153



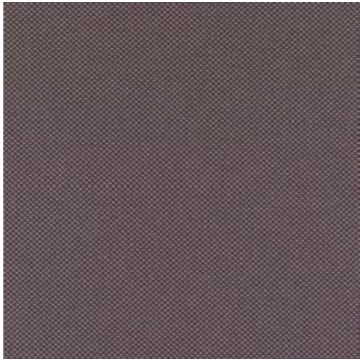
0173



0183



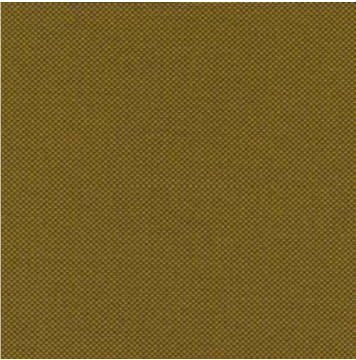
0213



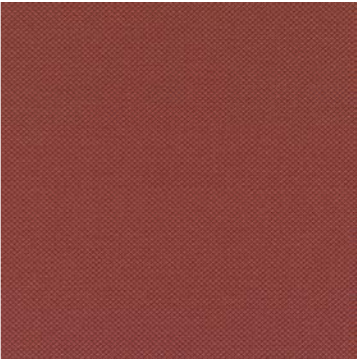
0243



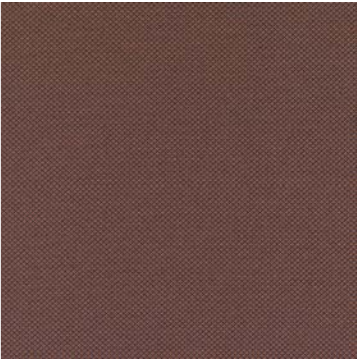
0253



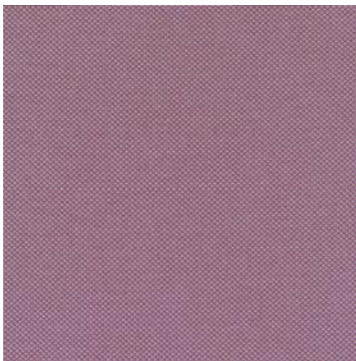
0443



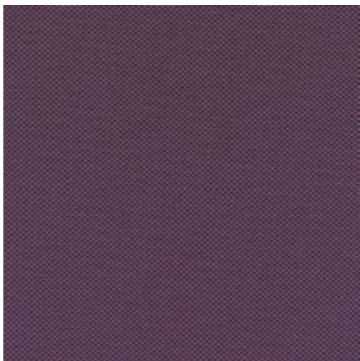
0543



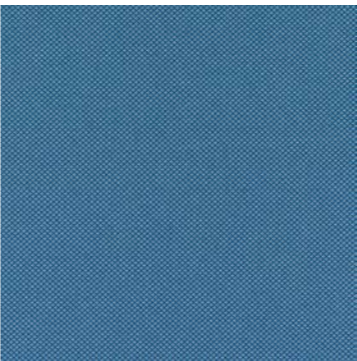
0553



0613



0643



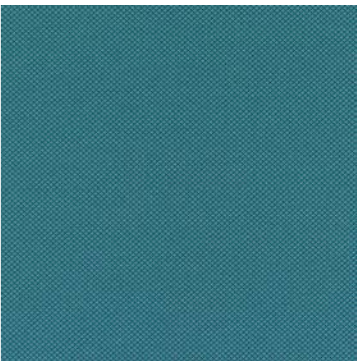
0713



0743



0783



0823

House Fabrics 2 – HF2

HF1 **HF2** HF3 HF4 HF5 HF6 HF7

KVADRAT - SPORT

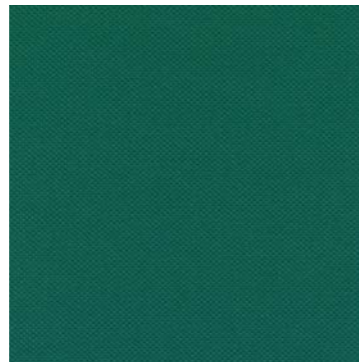
Content: 100% ocean bound polyester

Abrasion: Approx. 40.000 Martindale rubs, EN ISO 12947

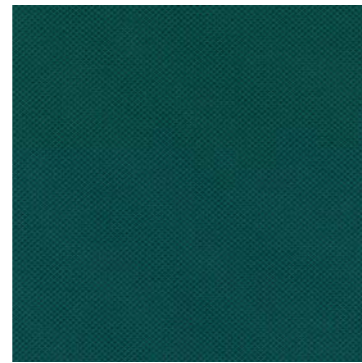
Lightfastness: Note 6-7 ISO 105-B02

Country of Origin: Holland

Environmental:
Recycled content
Follow the EU Ecolabel dye restrictions incl. AZO dye and heavy metal restrictions
REACH compliant
Californian Proposition 65 list compliant
LBC Red list compliant
Healthier Hospitals compliant
Mono-material designed for circularity
Recyclable



0923



0943

House Fabrics 3 – HF3

HF1 HF2 **HF3** HF4 HF5 HF6 HF7

KVADRAT - PATIO

Outdoor Fabric - Woven

Content: 100% Trevira CS,
water repellent

Application: Indoor/outdoor
upholstery

Durability: 50,000 Martindale

Lightfastness: 7

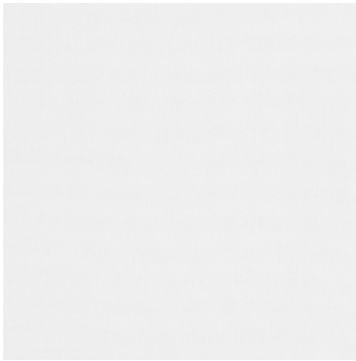
Pilling: 4-5 (ISO 1-5)

Maintenance: Vacuuming.
Drip drying. Shrinkage app.
1%. Mount in moist condi-
tion. Mildew growth is not
promoted by the textile but
mildew may grow on dirt and
other foreign substances if not
removed. Keep the textile dry
to avoid mildew spores to
stick.

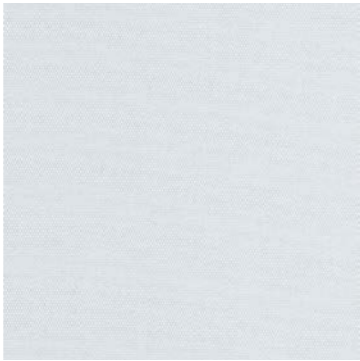
Country of Origin: Holland

Sustainability:
Greenguard Gold
HPD
EPD

Available for outdoor products
only.



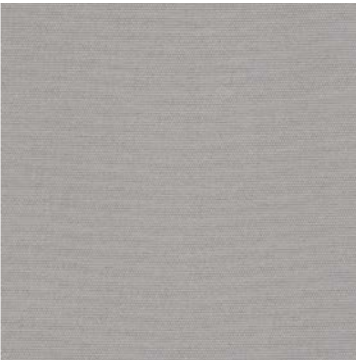
0100



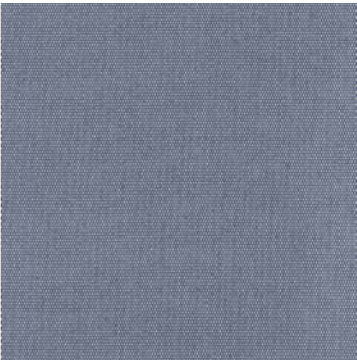
0110



0140



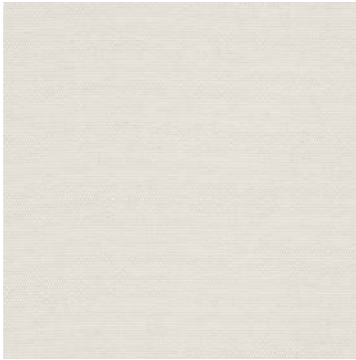
0150



0170



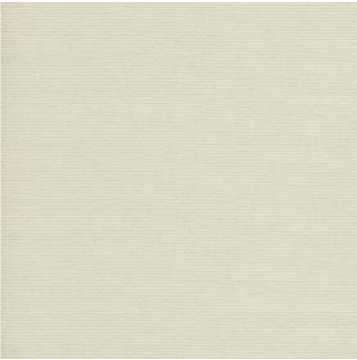
0200



0210



0220



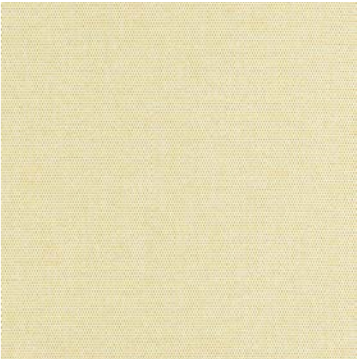
0230



0340



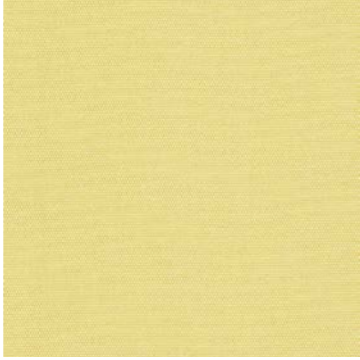
0370



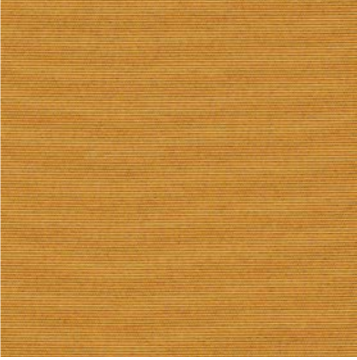
0410



0430



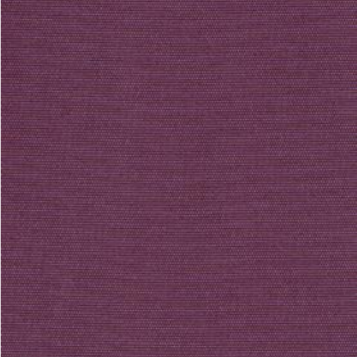
0440



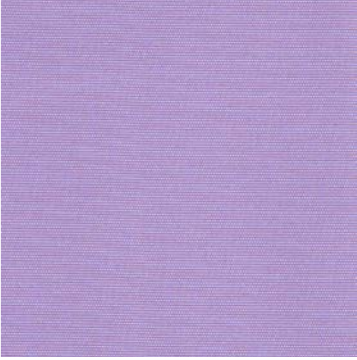
0450



0550



0570



0650

House Fabrics 3 – HF3

HF1 HF2 **HF3** HF4 HF5 HF6 HF7

KVADRAT - PATIO

Outdoor Fabric - Woven

Content: 100% Trevira CS,
water repellent

Application: Indoor/outdoor
upholstery

Durability: 50,000 Martindale

Lightfastness: 7

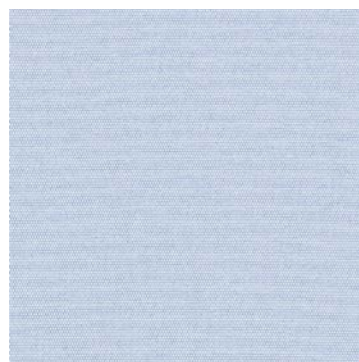
Pilling: 4-5 (ISO 1-5)

Maintenance: Vacuuming.
Drip drying. Shrinkage app.
1%. Mount in moist condi-
tion. Mildew growth is not
promoted by the textile but
mildew may grow on dirt and
other foreign substances if not
removed. Keep the textile dry
to avoid mildew spores to
stick.

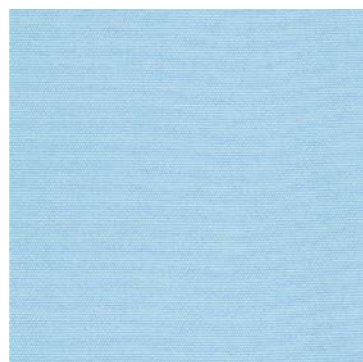
Country of Origin: Netherlands

Sustainability:
Greenguard Gold
HPD
EPD

Available for outdoor products
only.



0730



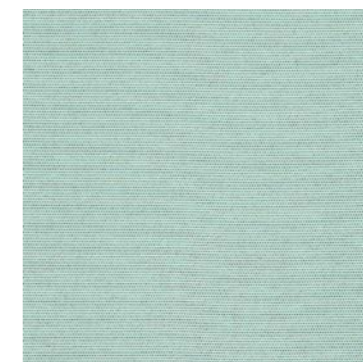
0740



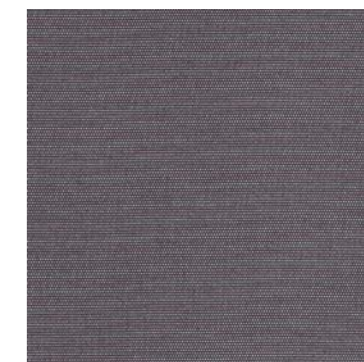
0750



0780



0840



0970

House Fabrics 3 – HF3

HF1 HF2 **HF3** HF4 HF5 HF6 HF7

MAHARAM - NICO

Content: 63% Wool, 21% Polyester, 16% Nylon

Application: Upholstered Walls, Seating

Abrasion: ASTM D4966, 100,000 cycles Martindale

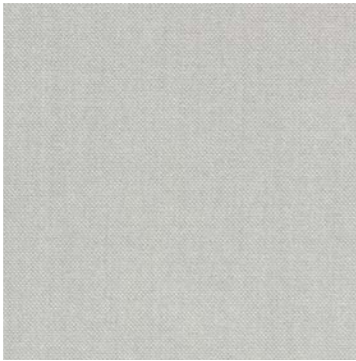
Lightfastness: AATCC 16.3, 40+ hours

Finish: None

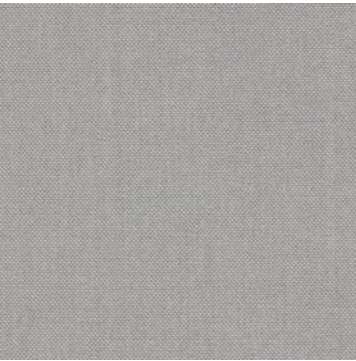
Backing: None

Country of Origin: Mexico

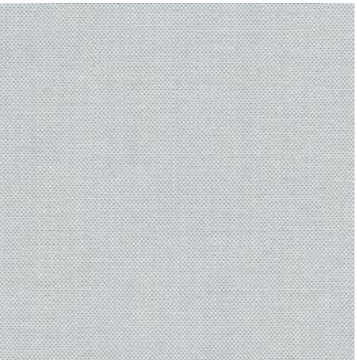
Environmental:
Greenguard Gold Certified
LBC Red List Free
REACH Compliant
Contains Bio-Based Content
FR Free
Free of Intentionally Added PFAS



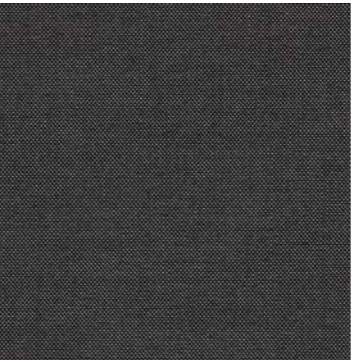
001 Alcazar



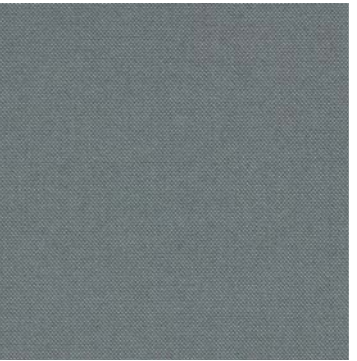
002 Ironclad



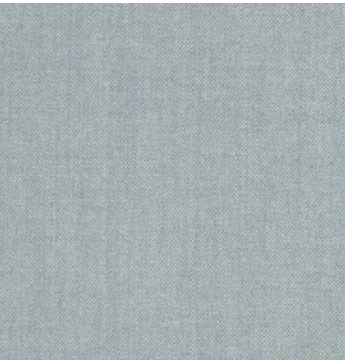
003 Tune



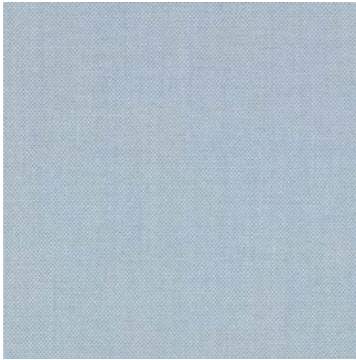
004 Bridegroom



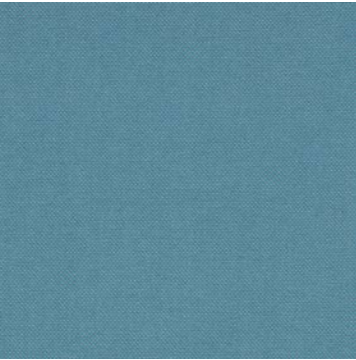
005 Diode



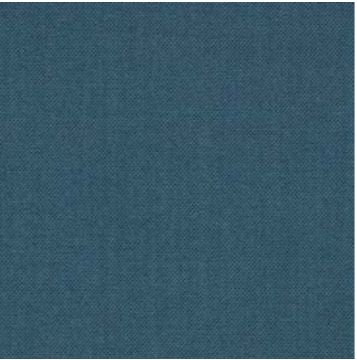
006 Jest



007 Sanctuary



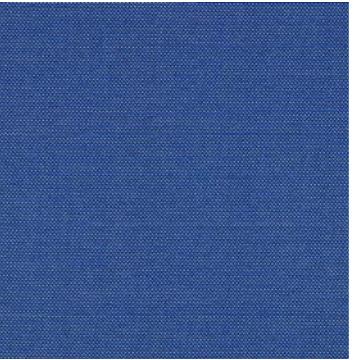
008 Aquarius



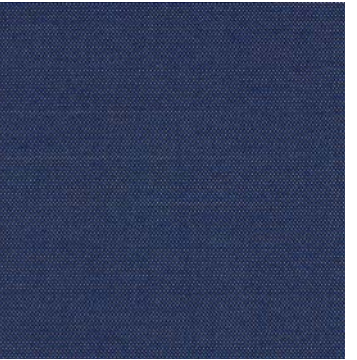
009 Houseboat



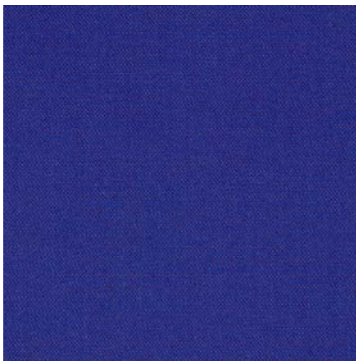
010 Olympian



011 Tennis



012 Dressage



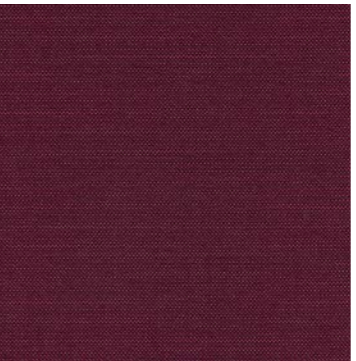
013 Zing



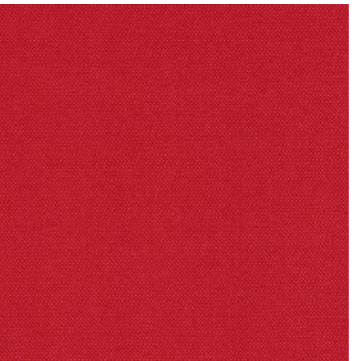
014 Bitterroot



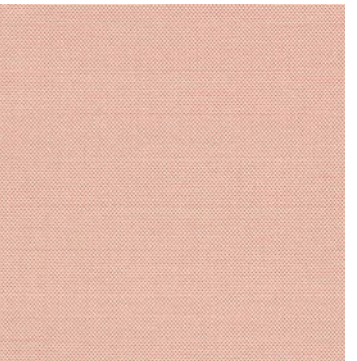
015 Gemini



016 Posh



017 Sizzle



018 Cheerful

House Fabrics 3 – HF3

HF1 HF2 **HF3** HF4 HF5 HF6 HF7

MAHARAM - NICO

Content: 63% Wool, 21% Polyester, 16% Nylon

Application: Upholstered Walls, Seating

Abrasion: ASTM D4966, 100,000 cycles Martindale

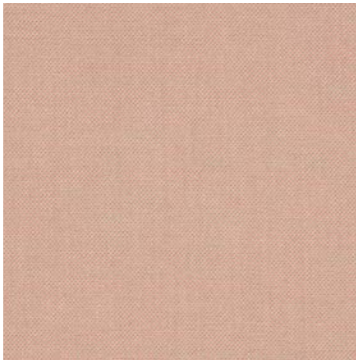
Lightfastness: AATCC 16.3, 40+ hours

Finish: None

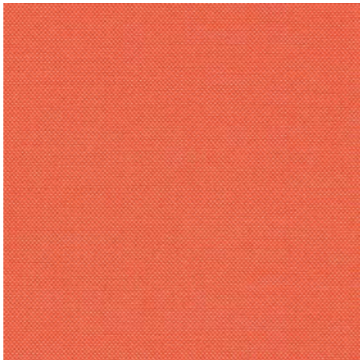
Backing: None

Country of Origin: Mexico

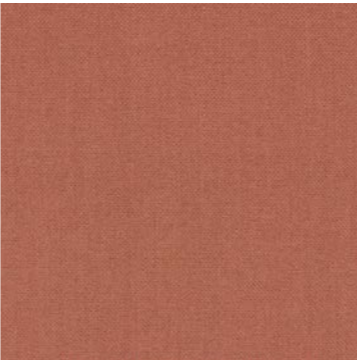
Environmental:
Greenguard Gold Certified
LBC Red List Free
REACH Compliant
Contains Bio-Based Content
FR Free
Free of Intentionally Added PFAS



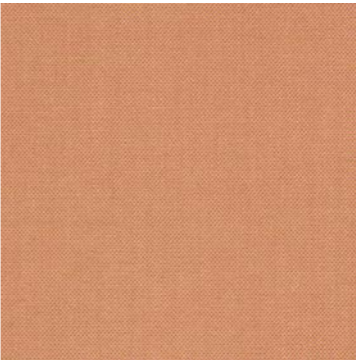
019 Watermelon



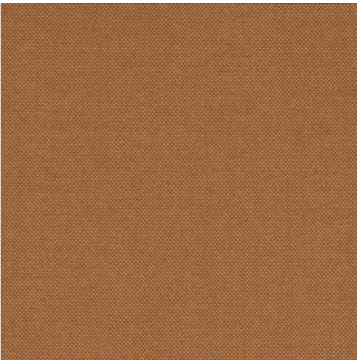
020 Toucan



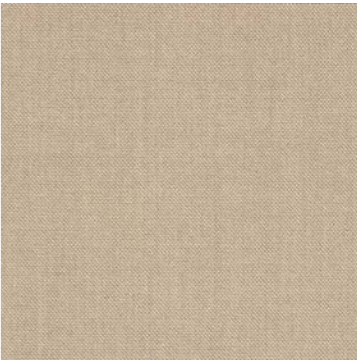
021 Rosin



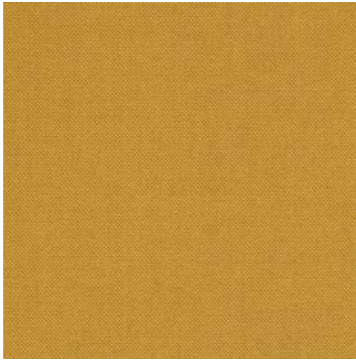
022 Jousting



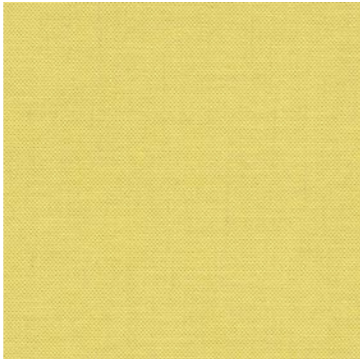
023 Jojoba



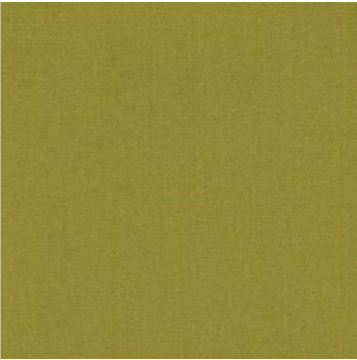
024 Dromedary



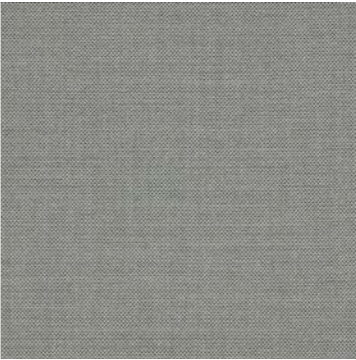
025 Toasty



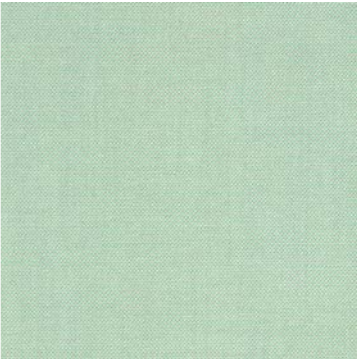
026 Casaba



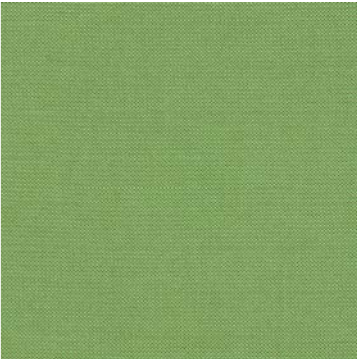
027 Greenhouse



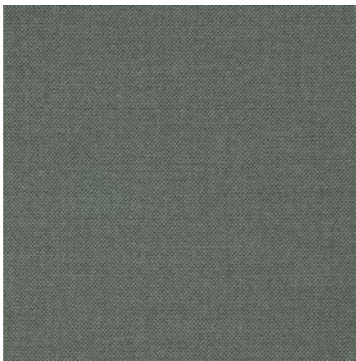
028 Sibyl



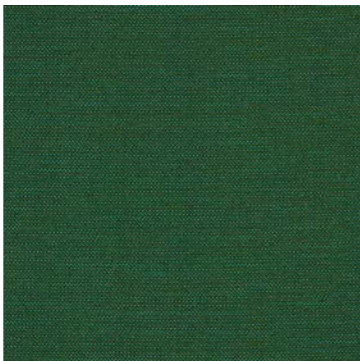
029 Spearmint



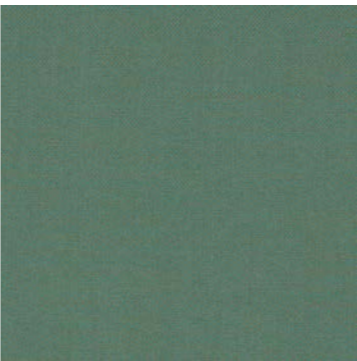
030 Pothos



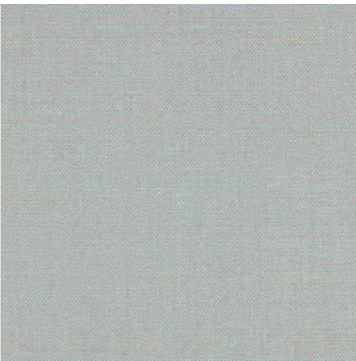
031 Calathea



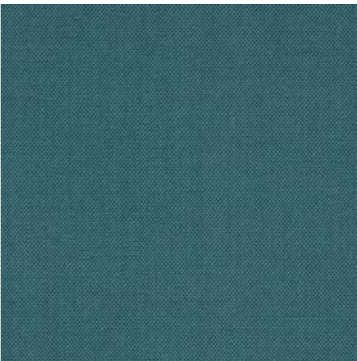
032 Landscape



033 Espalier



034 Gecko



035 Meditation

House Fabrics 3 – HF3

HF1 HF2 **HF3** HF4 HF5 HF6 HF7

KVADRAT - HERO HEATHER

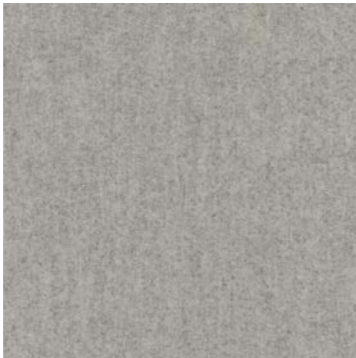
Content: 97% new wool, 3% recycled nylon

Abrasion: Approx. 45.000 Martindale rubs, EN ISO 12947

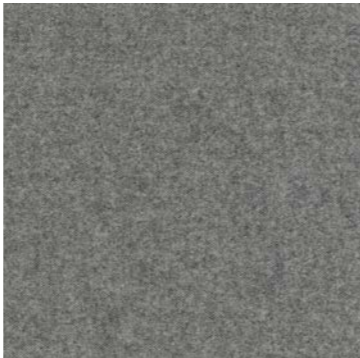
Lightfastness: Note 6 ISO 105-B02

Country of Origin: UK

Environmental:
EU Ecolabel compliant
REACH compliant
Californian Proposition 65 list compliant
LBC Red list compliant
Healthier Hospitals compliant
No content of PFCs or 'PFAS'



0113



0143



0153



0163



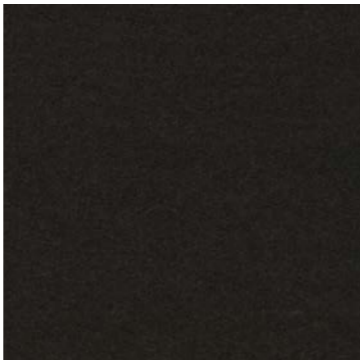
0183



0233



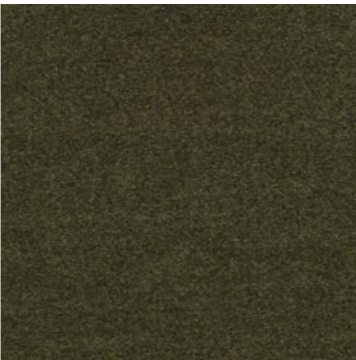
0373



0393



0423



0463



0533



0563



0643



0663



0673



0683



0713



0733

House Fabrics 3 – HF3

HF1 HF2 **HF3** HF4 HF5 HF6 HF7

KVADRAT - HERO HEATHER

Content: 97% new wool, 3% recycled nylon

Abrasion: Approx. 45.000 Martindale rubs, EN ISO 12947

Lightfastness: Note 6 ISO 105-B02

Country of Origin: UK

Environmental:
EU Ecolabel compliant
REACH compliant
Californian Proposition 65 list compliant
LBC Red list compliant
Healthier Hospitals compliant
No content of PFCs or 'PFAS'



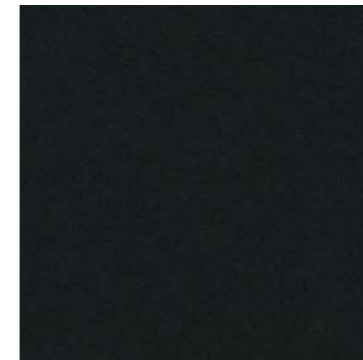
0753



0773



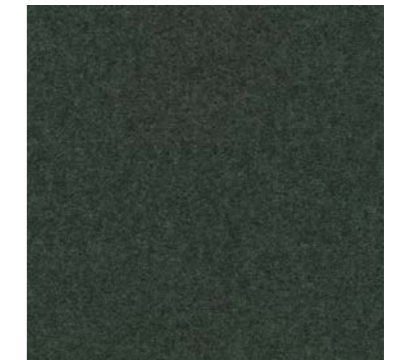
0873



0893



0933



0953



0973

House Fabrics 4 – HF4

HF1 HF2 HF3 **HF4** HF5 HF6 HF7

MAHARAM - PITCH

Outdoor Leather Alternative
Smooth

Content: 100% Vinyl

Application: Outdoor
upholstery

Abrasion: 100,000 double rubs
Wyzenbeek

Lightfastness: ASTM G 154,
1,000+ hours

Finish: Ink-Resistant Protective
Top Coat

Backing: Polyester

Maintenance: W/B-Clean
with water-based cleanser or
diluted household bleach.

Country of Origin: Colombia

Environmental:
Produced in an ISO 14001
Facility
PFAS-Free

Available for outdoor products
only.



Pollen 466186-004



Apple 466186-007



Voyage 466186-011



Turquoise 466186-012



Inlet 466186-014



Captain 466186-015



Aura 466186-016



Coastal 466186-017



Fog 466186-018



Coal 466186-019



Mulberry 466186-021



Flame 466186-024



Tumbleweed 466186-026



Subtle 466186-029



Buff 466186-030

House Fabrics 4 – HF4

HF1 HF2 HF3 **HF4** HF5 HF6 HF7

KVADRAT - CANVAS 2

Plain Variant

Content: 90% new wool worsted, 10% nylon

Application: Indoor/outdoor upholstery

Durability: 100,000 Martindale

Lightfastness: 5-6

Pilling: 4(ISO 1-5)

Maintenance: Vacuum clean frequently, ideally every week. Remove stains as soon as they occur, with clean warm water or sparkling water.

Extraction clean when necessary. Extraction cleaning might dissolve water-based glue. Pay attention to temperature and amount of cleaning fluid.

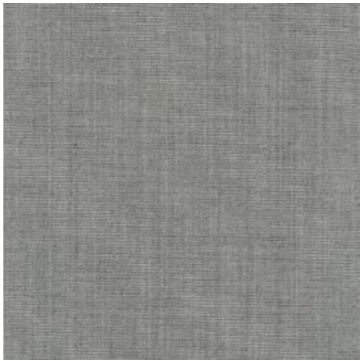
Country of Origin: United Kingdom

Sustainability: EU Ecolabel Greenguard Gold HPD EPD

For seat pads only.



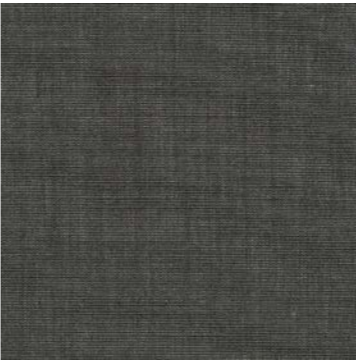
0114



0124



0134



0154



0174



0216



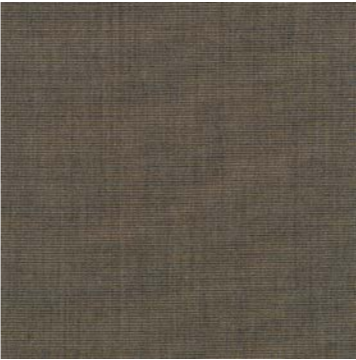
0224



0244



0254



0264



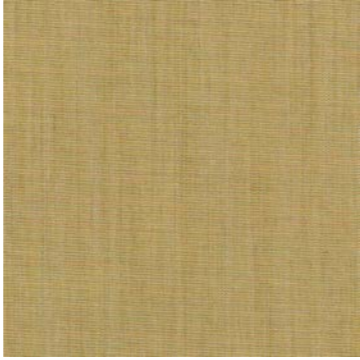
0356



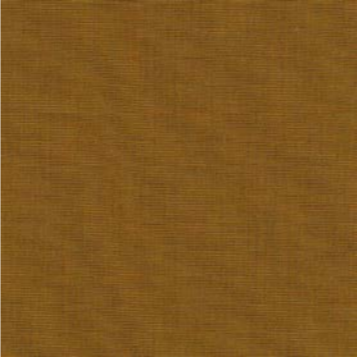
0364



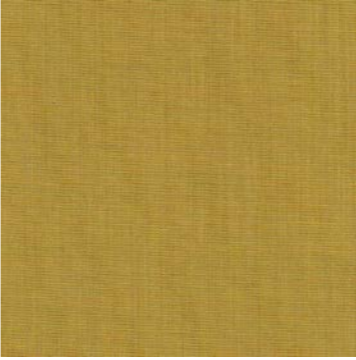
0374



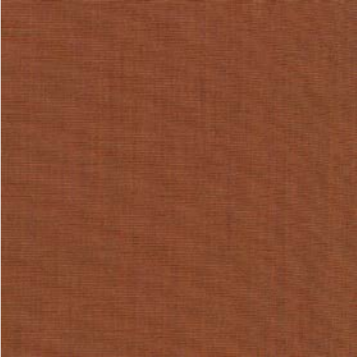
0414



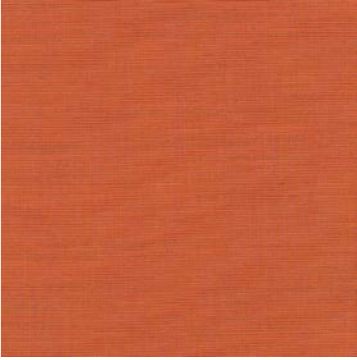
0424



0446



0454



0546

House Fabrics 4 – HF4

HF1 HF2 HF3 **HF4** HF5 HF6 HF7

KVADRAT - CANVAS 2

Plain Variant

Content: 90% new wool worsted, 10% nylon

Application: Indoor/outdoor upholstery

Durability: 100,000 Martindale

Lightfastness: 5-6

Pilling: 4(ISO 1-5)

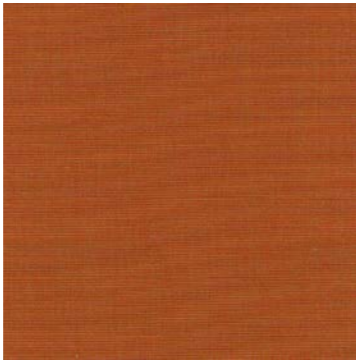
Maintenance: Vacuum clean frequently, ideally every week. Remove stains as soon as they occur, with clean warm water or sparkling water.

Extraction clean when necessary. Extraction cleaning might dissolve water-based glue. Pay attention to temperature and amount of cleaning fluid.

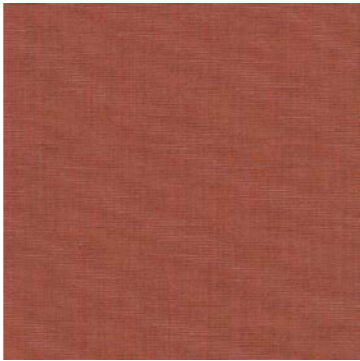
Country of Origin: United Kingdom

Sustainability: EU Ecolabel Greenguard Gold HPD EPD

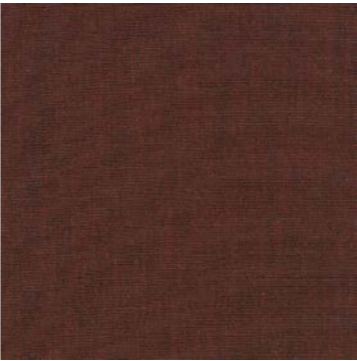
For seat pads only.



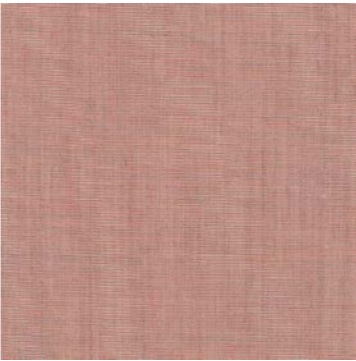
0556



0566



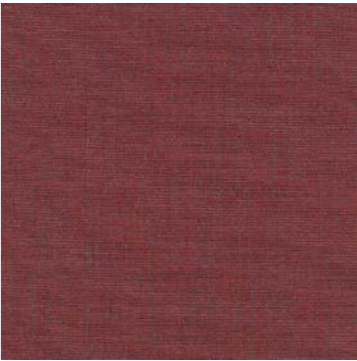
0576



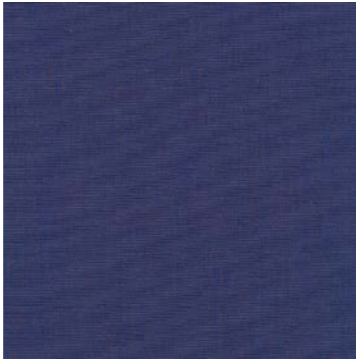
0614



0644



0654



0666



0674



0684



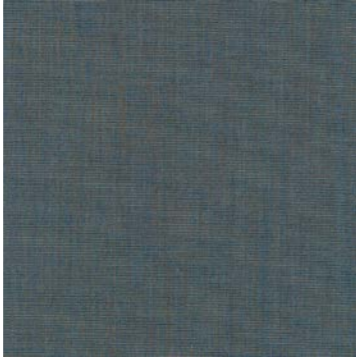
0694



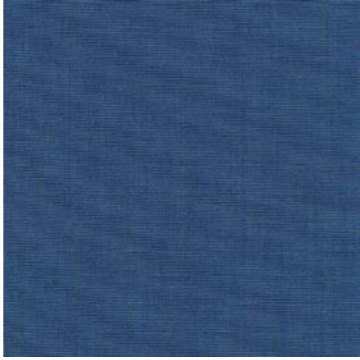
0716



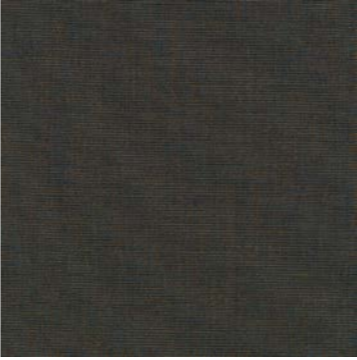
0726



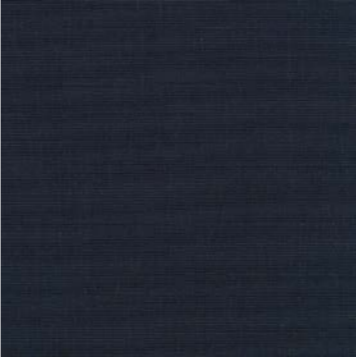
0734



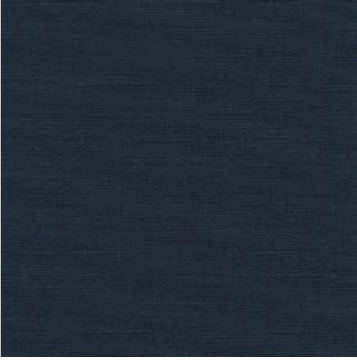
0746



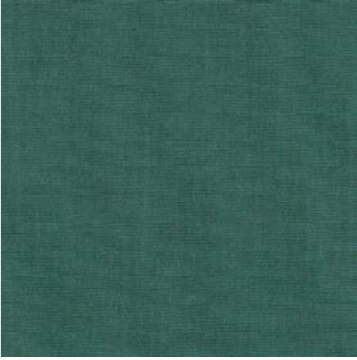
0764



0786



0794



0836

House Fabrics 4 – HF4

HF1 HF2 HF3 **HF4** HF5 HF6 HF7

KVADRAT - CANVAS 2

Plain Variant

Content: 90% new wool worsted, 10% nylon

Application: Indoor/outdoor upholstery

Durability: 100,000 Martindale

Lightfastness: 5-6

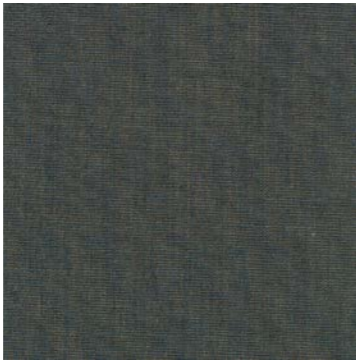
Pilling: 4(ISO 1-5)

Maintenance: Vacuum clean frequently, ideally every week. Remove stains as soon as they occur, with clean warm water or sparkling water. Extraction clean when necessary. Extraction cleaning might dissolve water-based glue. Pay attention to temperature and amount of cleaning fluid.

Country of Origin: United Kingdom

Sustainability:
EU Ecolabel
Greenguard Gold
HPD
EPD

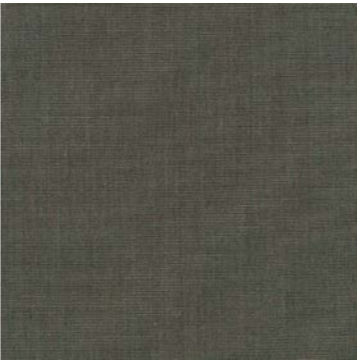
For seat pads only.



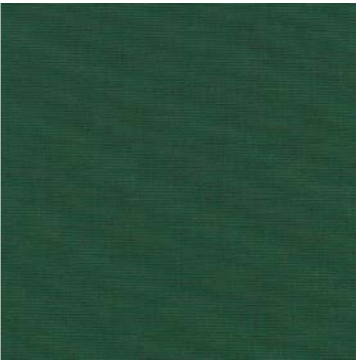
0854



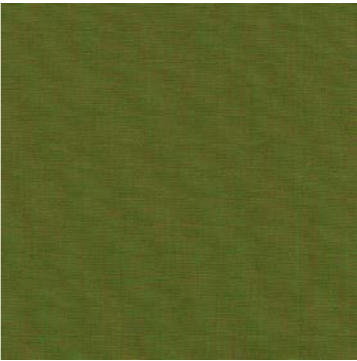
0926



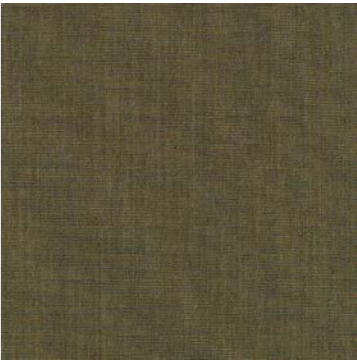
0936



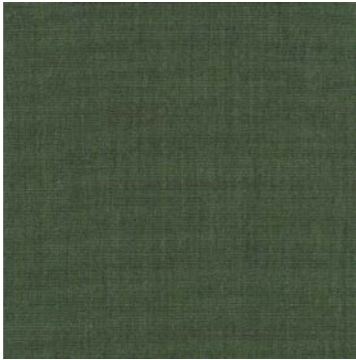
0946



0954



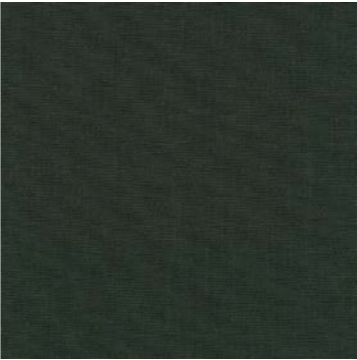
0964



0974



0984



0996

House Fabrics 4 – HF4

HF1 HF2 HF3 **HF4** HF5 HF6 HF7

KVADRAT - REMIX 3

Content: 90% new wool, 10% nylon

Abrasion: Approx. 100.000 Martindale rubs, EN ISO 12947

Lightfastness: Note 5-7 ISO 105-B02

Pilling: Note 4, EN ISO 1294

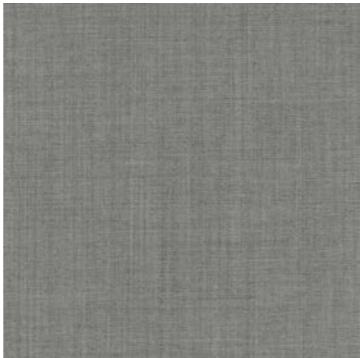
Maintenance: Vacuum clean frequently, ideally every week. Remove stains as soon as they occur, with clean warm water or sparkling water. Extraction clean when necessary. Extraction cleaning might dissolve water-based glue. Pay attention to temperature and amount of cleaning fluid.

Country of Origin: UK

Environment:
EU Ecolabel compliant
No content of PFCs or 'PFAS'
REACH compliant
Californian Proposition 65 list compliant
LBC Red list compliant
Healthier Hospitals compliant



0113



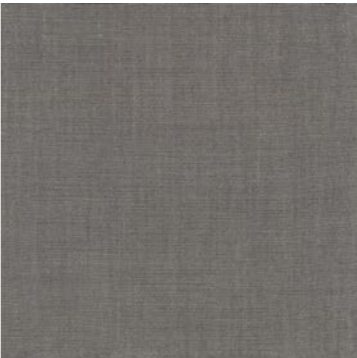
0123



0126



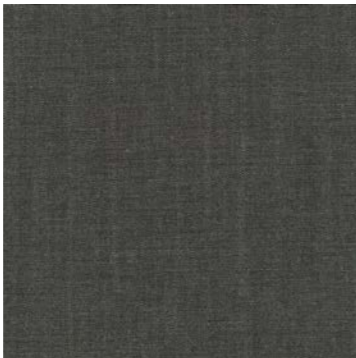
0133



0136



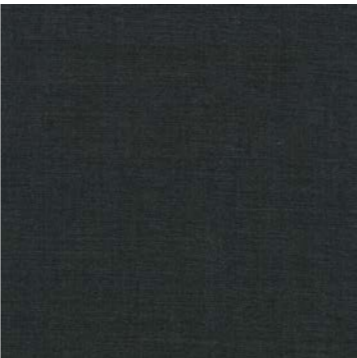
0143



0152



0163



0173



0183



0196



0223



0233



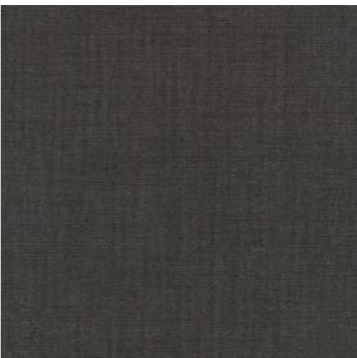
0242



0252



0266



0276



0286

House Fabrics 4 – HF4

HF1 HF2 HF3 **HF4** HF5 HF6 HF7

KVADRAT - REMIX 3

Content: 90% new wool, 10% nylon

Abrasion: Approx. 100.000 Martindale rubs, EN ISO 12947

Lightfastness: Note 5-7 ISO 105-B02

Pilling: Note 4, EN ISO 1294

Maintenance: Vacuum clean frequently, ideally every week. Remove stains as soon as they occur, with clean warm water or sparkling water. Extraction clean when necessary. Extraction cleaning might dissolve water-based glue. Pay attention to temperature and amount of cleaning fluid.

Country of Origin: UK

Environment:
EU Ecolabel compliant
No content of PFCs or 'PFAS'
REACH compliant
Californian Proposition 65 list compliant
LBC Red list compliant
Healthier Hospitals compliant



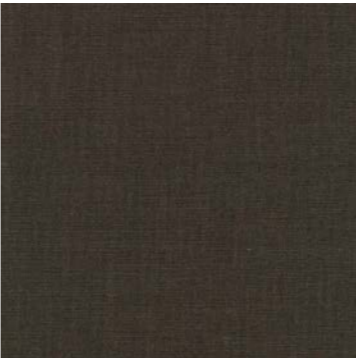
0296



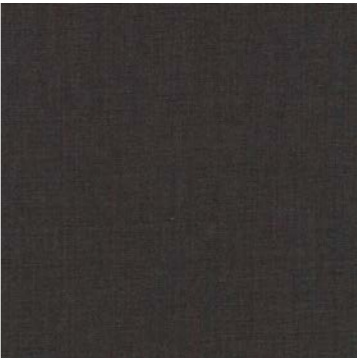
0326



0346



0356



0362



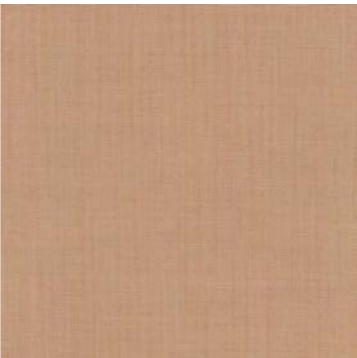
0373



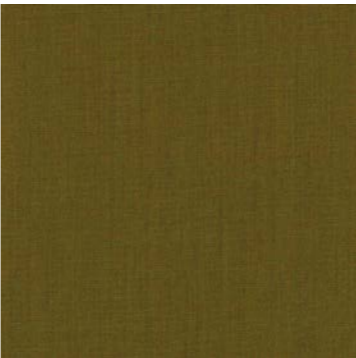
0383



0163



0393



0406



0422



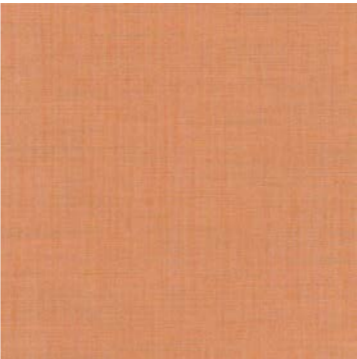
0433



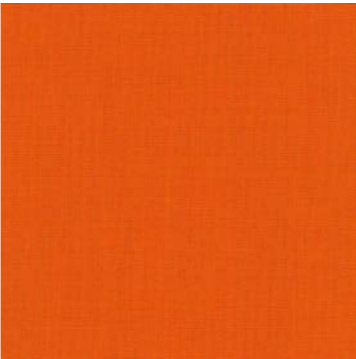
0443



0452



0516



0536



0543



0566

House Fabrics 4 – HF4

HF1 HF2 HF3 **HF4** HF5 HF6 HF7

KVADRAT - REMIX 3

Content: 90% new wool, 10% nylon

Abrasion: Approx. 100.000 Martindale rubs, EN ISO 12947

Lightfastness: Note 5-7 ISO 105-B02

Pilling: Note 4, EN ISO 1294

Maintenance: Vacuum clean frequently, ideally every week. Remove stains as soon as they occur, with clean warm water or sparkling water. Extraction clean when necessary. Extraction cleaning might dissolve water-based glue. Pay attention to temperature and amount of cleaning fluid.

Country of Origin: UK

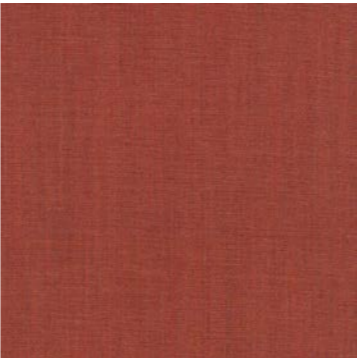
Environment:
EU Ecolabel compliant
No content of PFCs or 'PFAS'
REACH compliant
Californian Proposition 65 list compliant
LBC Red list compliant
Healthier Hospitals compliant



0606



0612



0632



0643



0653



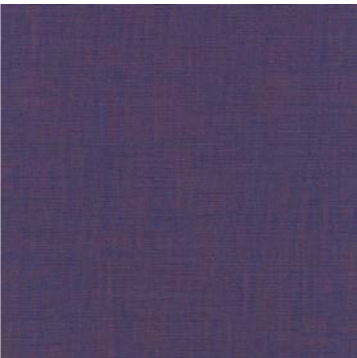
0662



0672



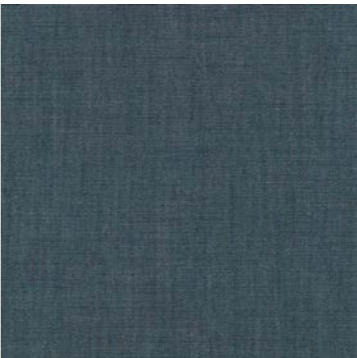
0682



0686



0692



0716



0722



0733



0743



0753



0762



0773



0783

House Fabrics 4 – HF4

HF1 HF2 HF3 **HF4** HF5 HF6 HF7

KVADRAT - REMIX 3

Content: 90% new wool, 10% nylon

Abrasion: Approx. 100.000 Martindale rubs, EN ISO 12947

Lightfastness: Note 5-7 ISO 105-B02

Pilling: Note 4, EN ISO 1294

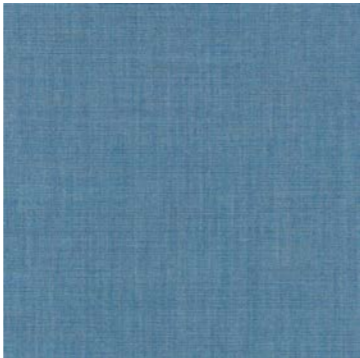
Maintenance: Vacuum clean frequently, ideally every week. Remove stains as soon as they occur, with clean warm water or sparkling water. Extraction clean when necessary. Extraction cleaning might dissolve water-based glue. Pay attention to temperature and amount of cleaning fluid.

Country of Origin: UK

Environment:
EU Ecolabel compliant
No content of PFCs or 'PFAS'
REACH compliant
Californian Proposition 65 list compliant
LBC Red list compliant
Healthier Hospitals compliant



0796



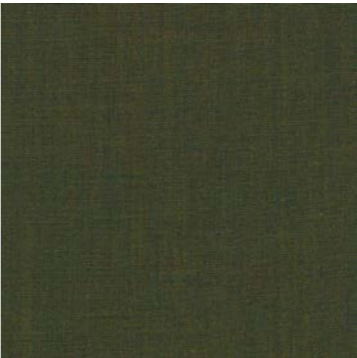
0816



0823



0836



0824



0852



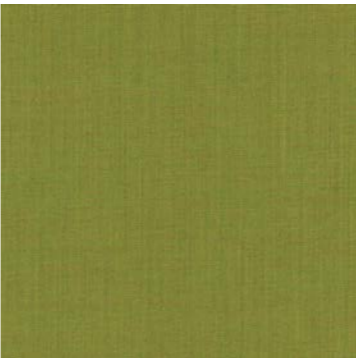
0866



0873



0906



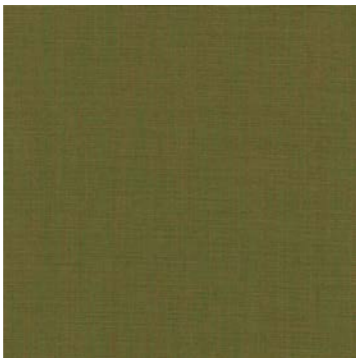
0912



0923



0933



0942



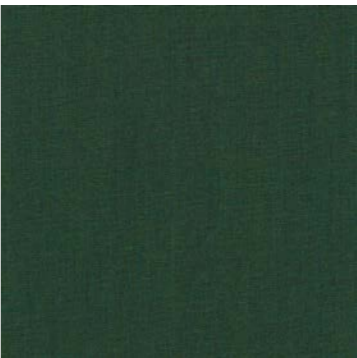
0954



0962



0973



0982



0996

House Fabrics 4 – HF4

HF1 HF2 HF3 **HF4** HF5 HF6 HF7

KVADRAT - COLLINE 2

Geometric Weave

Content: 75% New Wool
Worsted, 17% Polyacrylic, 8%
Nylon

Application: Indoor upholstery

Durability: 100,000 Martindale

Lightfastness: 7

Pilling: 4-5 (ISO 1-5)

Maintenance: Dry cleaning
or cleaning with foam
detergents.

Country of Origin: United
Kingdom

Sustainability:
Greenguard Gold
HPD
EPD

Seat pads made in this
material are for trade only.



0127



0147



0177



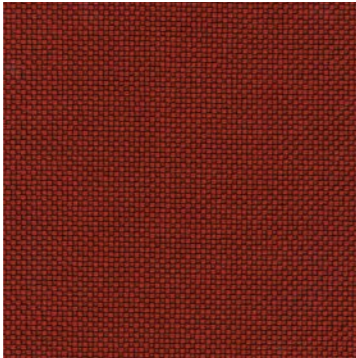
0227



0347



0397



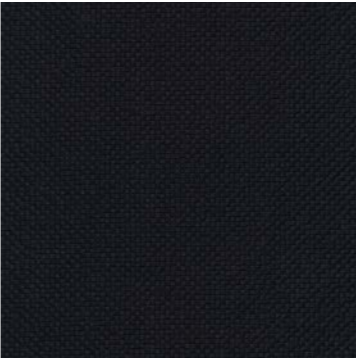
0657



0677



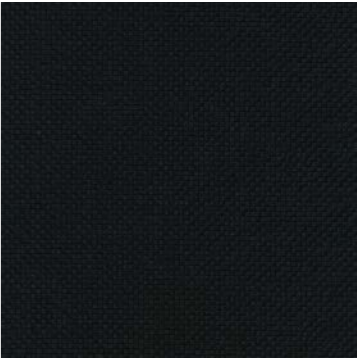
0737



0787



0797



0987

House Fabrics 4 – HF4

HF1 HF2 HF3 **HF4** HF5 HF6 HF7

KVADRAT - REWOOL

Content: 45% recycled wool
45% new wool, worsted 10% nylon

Abrasion: Approx. 100.000
Martindale rubs, EN ISO 12947

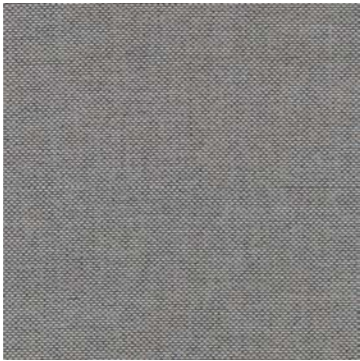
Lightfastness: Note 6-7 ISO
105-B02

Pilling: Note 4, EN ISO 12945

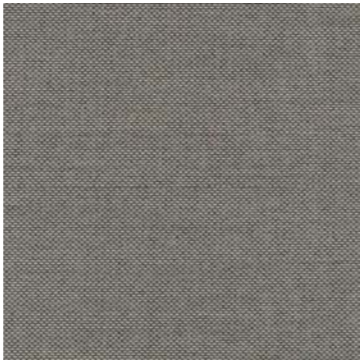
Maintenance: Vacuum clean frequently, ideally every week. Remove stains as soon as they occur, with clean warm water or sparkling water. Extraction clean when necessary. Extraction cleaning might dissolve water-based glue. Pay attention to temperature and amount of cleaning fluid.

Country of Origin: UK

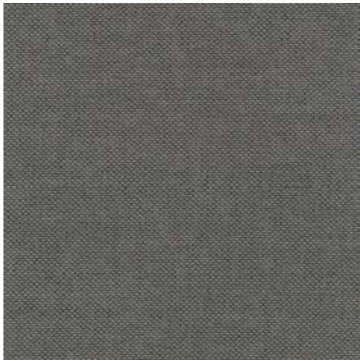
Environment:
Recycled content
EU Ecolabel compliant
No content of PFCs or 'PFAS'
REACH compliant
Californian Proposition 65 list compliant
LBC Red list compliant
Healthier Hospitals compliant



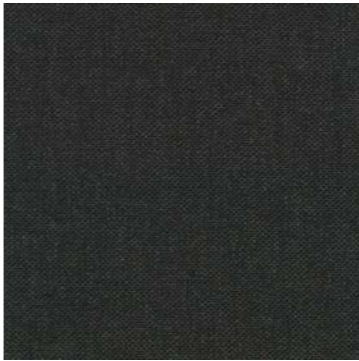
0108



0128



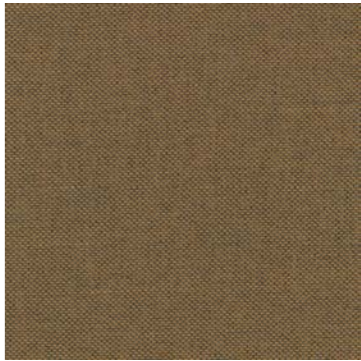
0158



0198



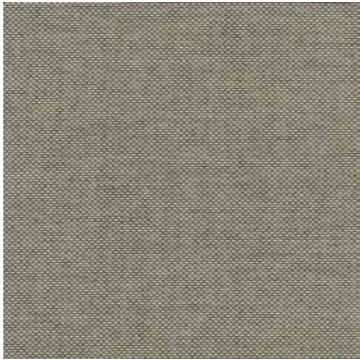
0218



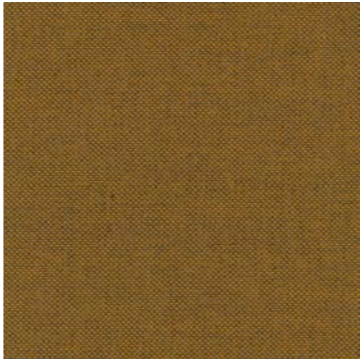
0358



0378



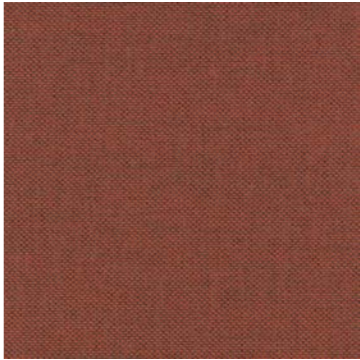
0408



0448



0458



0558



0568



0628



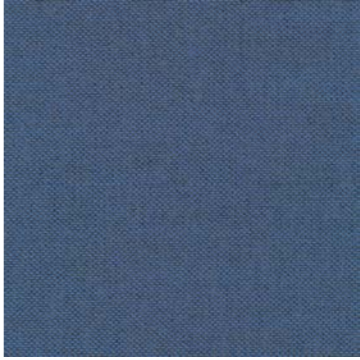
0648



0658



0718



0758



0768

House Fabrics 4 – HF4

HF1 HF2 HF3 **HF4** HF5 HF6 HF7

KVADRAT - REWOOL

Content: 45% recycled wool
45% new wool, worsted 10%
nylon

Abrasion: Approx. 100.000
Martindale rubs, EN ISO 12947

Lightfastness: Note 6-7 ISO
105-B02

Pilling: Note 4, EN ISO 12945

Maintenance: Vacuum clean
frequently, ideally every week.
Remove stains as soon as
they occur, with clean warm
water or sparkling water.
Extraction clean when
necessary. Extraction cleaning
might dissolve water-based
glue. Pay
attention to temperature and
amount of cleaning fluid.

Country of Origin: UK

Environment:
Recycled content
EU Ecolabel compliant
No content of PFCs or 'PFAS'
REACH compliant
Californian Proposition 65 list
compliant
LBC Red list compliant
Healthier Hospitals compliant



0828



0858



0868

House Fabrics 4 – HF4

HF1 HF2 HF3 **HF4** HF5 HF6 HF7

KVADRAT - SUUNTA

Content: 35% new wool, 11% nylon, 54% recycled polyester

Abrasion: Approx. 100.000 Martindale rubs, EN ISO 12947

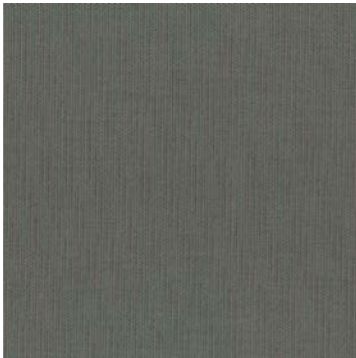
Lightfastness: Note 6-7, ISO 105-B02

Pilling: Note 4-5, EN ISO 12945

Maintenance: Vacuuming gently. Washable at 30°C if loose covers. Drip drying. Shrinkage approx. 2% Mount in moist condition

Country of Origin: The Netherlands

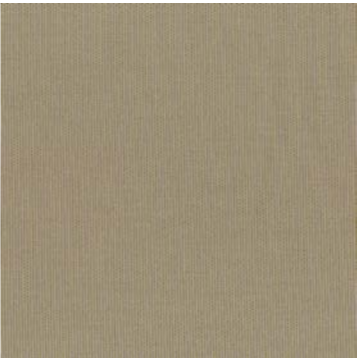
Environment:
Polyester used is made of 100% recycled post-consumer plastic bottles
Reduced raw material by using waste as a resource
Decreased CO2 footprint
REACH compliant
Follow the EU Ecolabel dye restrictions incl. AZO dye and heavy metal restrictions
No use of halogen-based flame retardants (incl. brominated and chlorinated)
No content of formaldehyde
No content of PFCs or 'PFAS'
REACH compliant



0152



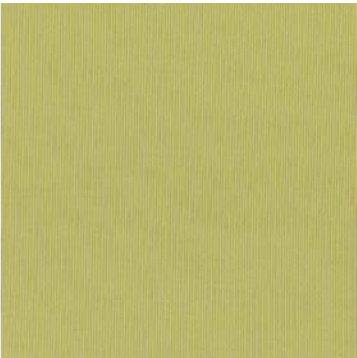
0162



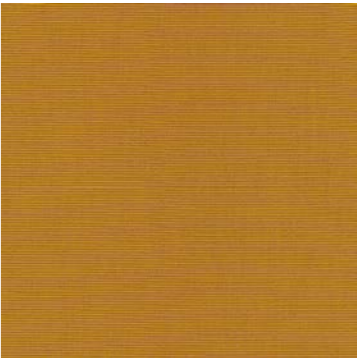
0212



0352



0402



0442



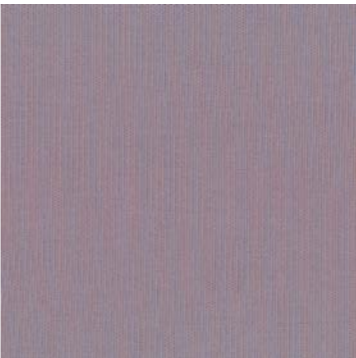
0552



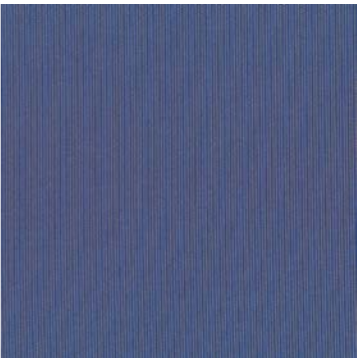
0582



0622



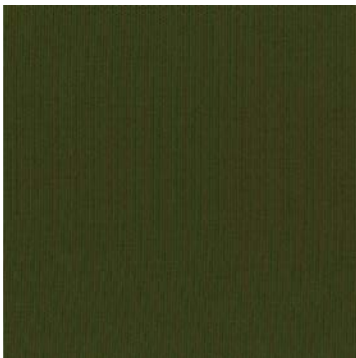
0712



0742



0792



0972



0992

House Fabrics 5 – HF5

HF1 HF2 HF3 HF4 **HF5** HF6 HF7

KVADRAT FEBRIK - PLANUM

Solid Weave

Content: 44% New Wool, 42% Polyester, 14% Nylon

Application: Indoor upholstery

Durability: 100,000 Martindale

Lightfastness: 5-6 (ISO 1-8)

Pilling: 4 (ISO 1-5)

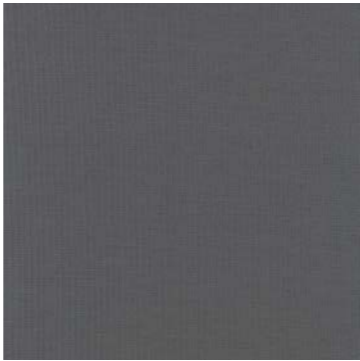
Maintenance: Do not bleach
Professional dry cleaning
with tetrachloroethylene, mild
process

Country of Origin: Holland

Sustainability:
Greenguard Gold
HPD
EPD



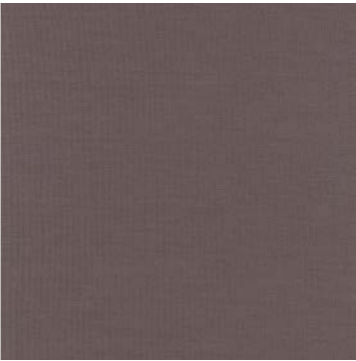
0111



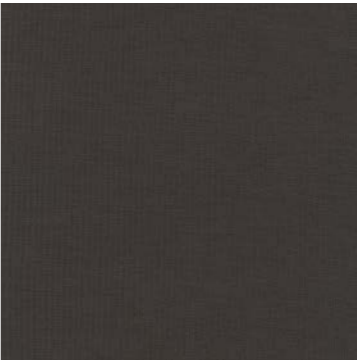
0141



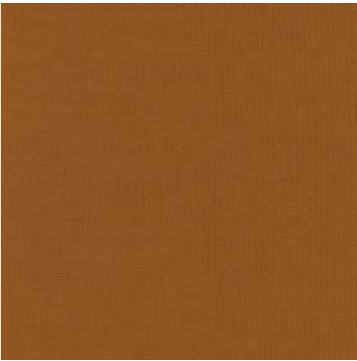
0201



0241



0271



0351



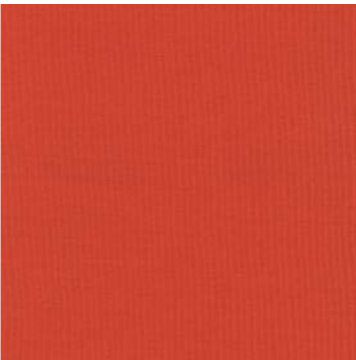
0411



0441



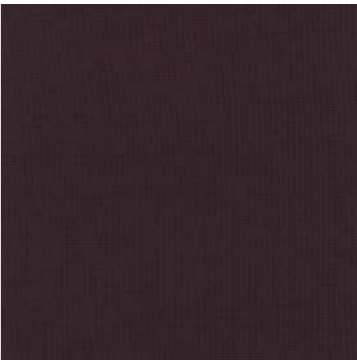
0521



0551



0571



0681



0711



0741



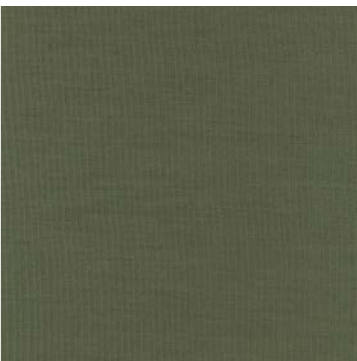
0751



0791



0921



0941

House Fabrics 5 – HF5

HF1 HF2 HF3 HF4 **HF5** HF6 HF7

KVADRAT FEBRIK - PLANUM

Solid Weave

Content: 44% New Wool, 42% Polyester, 14% Nylon

Application: Indoor upholstery

Durability: 100,000 Martindale

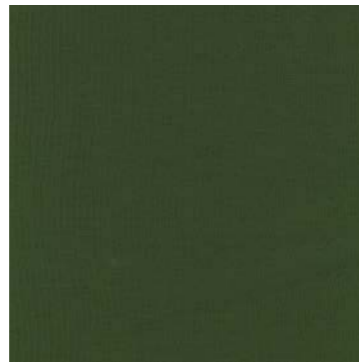
Lightfastness: 5-6 (ISO 1-8)

Pilling: 4 (ISO 1-5)

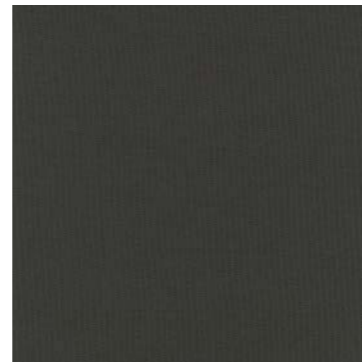
Maintenance: Do not bleach
Professional dry cleaning
with tetrachloroethylene, mild
process

Country of Origin: Holland

Sustainability:
Greenguard Gold
HPD
EPD



0961



0971

House Fabrics 5 – HF5

HF1 HF2 HF3 HF4 **HF5** HF6 HF7

KVADRAT - STEELCUT TRIO 3

Content: 90% new wool, 10% nylon

Abrasion: Approx. 100.000 Martindale rubs, EN ISO 12947

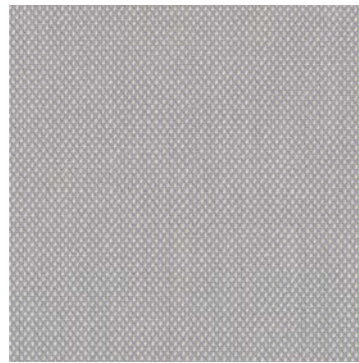
Lightfastness: Note 5-7 ISO 105-B02

Pilling: Note 4, EN ISO 12945

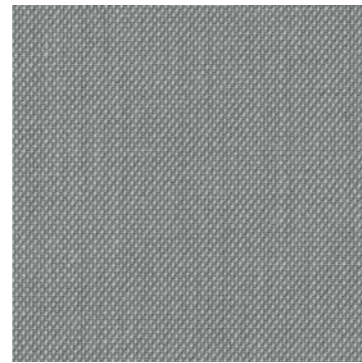
Maintenance: Vacuum clean frequently, ideally every week. Remove stains as soon as they occur, with clean warm water or sparkling water. Extraction clean when necessary. Extraction cleaning might dissolve water-based glue. Pay attention to temperature and amount of cleaning fluid.

Country of Origin: UK

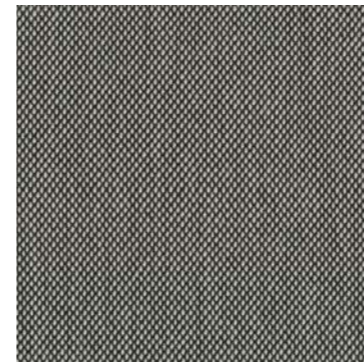
Environment:
 EU Ecolabel compliant
 No content of PFCs or 'PFAS'
 REACH compliant
 Californian Proposition 65 list compliant
 LBC Red list compliant
 Healthier Hospitals compliant



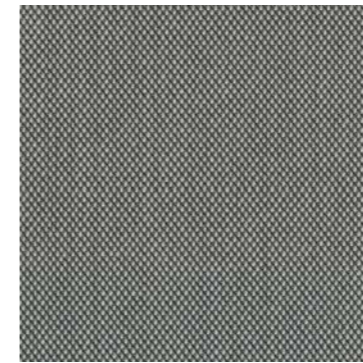
0105



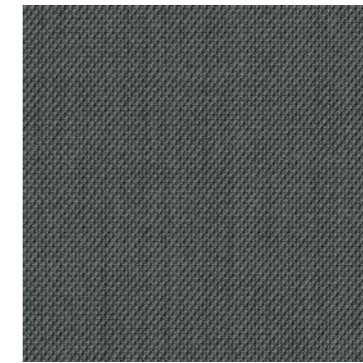
0113



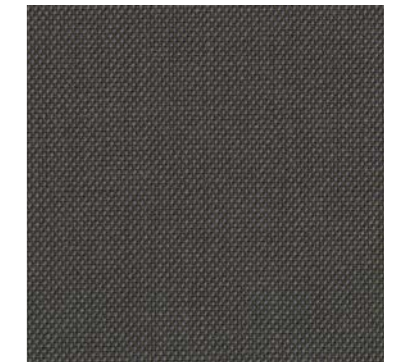
0124



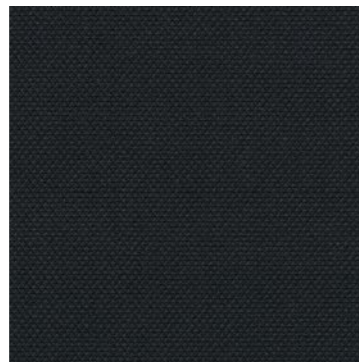
0133



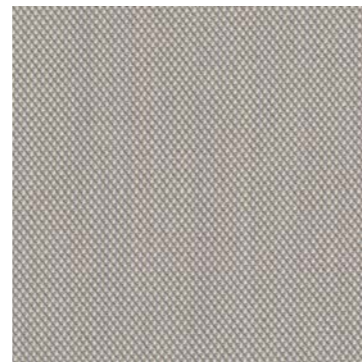
0153



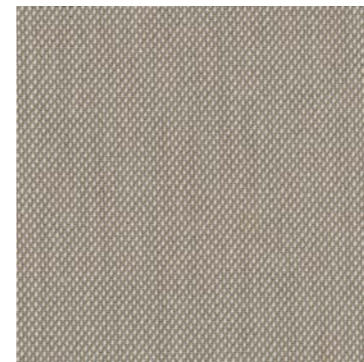
0176



0195



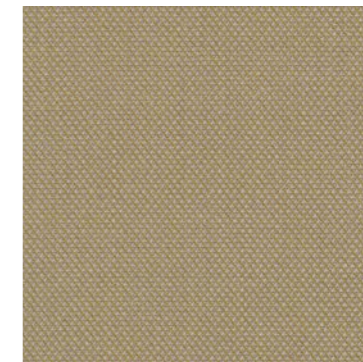
0205



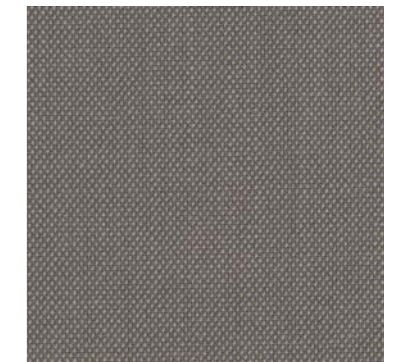
0213



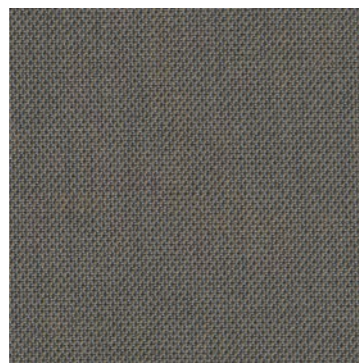
0226



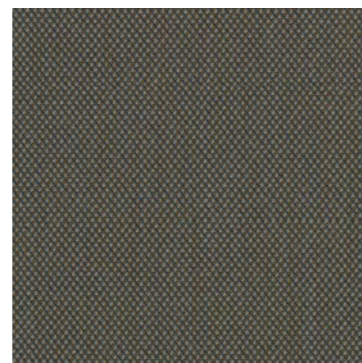
0236



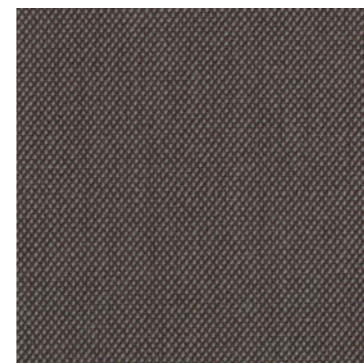
0246



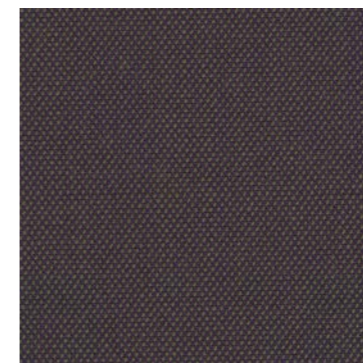
0253



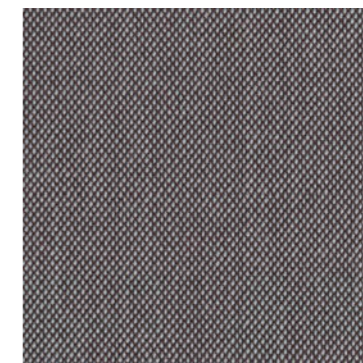
0266



0276



0283



0336



0376

House Fabrics 5 – HF5

HF1 HF2 HF3 HF4 HF5 HF6 HF7

KVADRAT - STEELCUT TRIO 3

Content: 90% new wool, 10% nylon

Abrasion: Approx. 100.000 Martindale rubs, EN ISO 12947

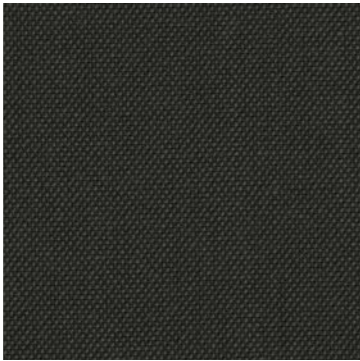
Lightfastness: Note 5-7 ISO 105-B02

Pilling: Note 4, EN ISO 12945

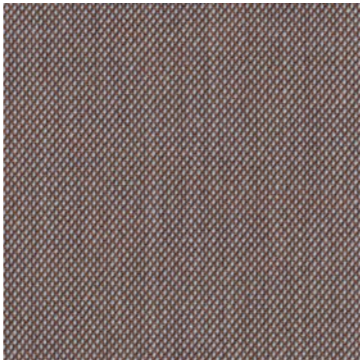
Maintenance: Vacuum clean frequently, ideally every week. Remove stains as soon as they occur, with clean warm water or sparkling water. Extraction clean when necessary. Extraction cleaning might dissolve water-based glue. Pay attention to temperature and amount of cleaning fluid.

Country of Origin: UK

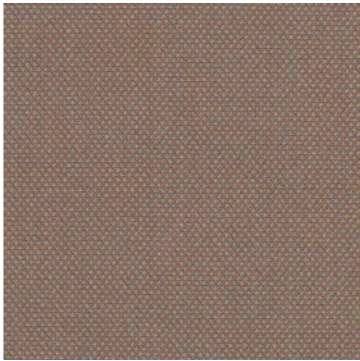
Environment:
EU Ecolabel compliant
No content of PFCs or 'PFAS'
REACH compliant
Californian Proposition 65 list compliant
LBC Red list compliant
Healthier Hospitals compliant



0383



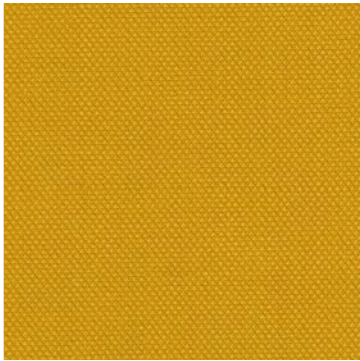
0416



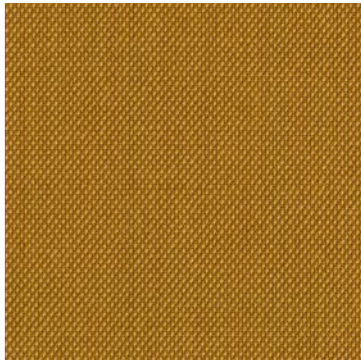
0426



0436



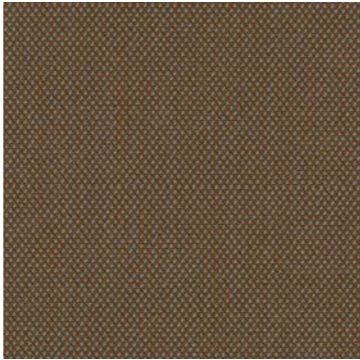
0446



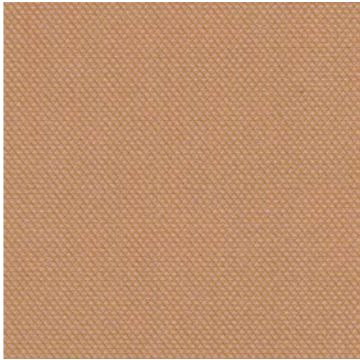
0453



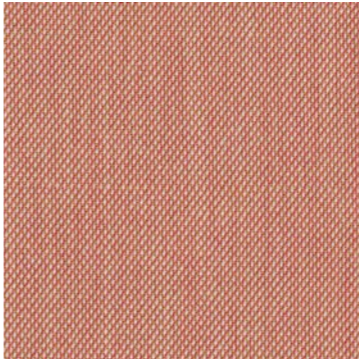
0466



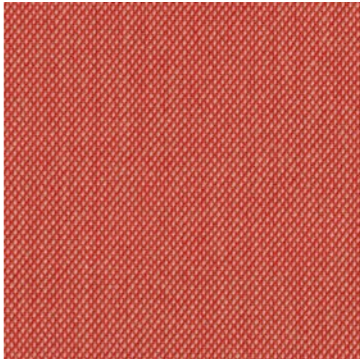
0476



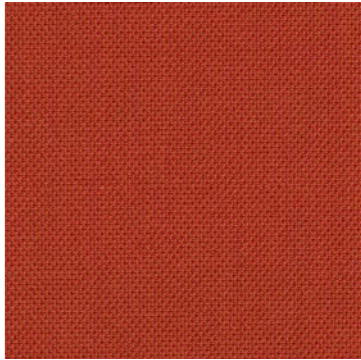
0506



0515



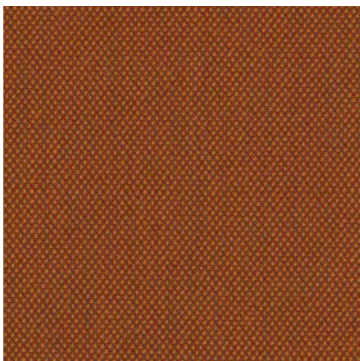
0526



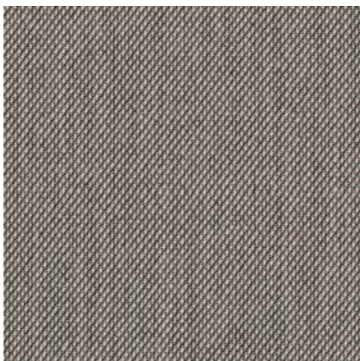
0533



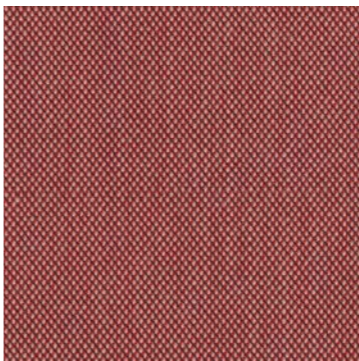
0553



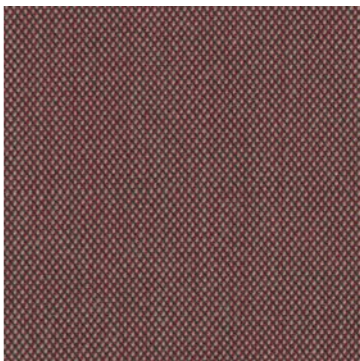
0576



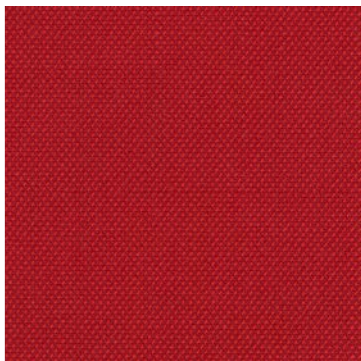
0616



0636



0645



0666

House Fabrics 5 – HF5

HF1 HF2 HF3 HF4 **HF5** HF6 HF7

KVADRAT - STEELCUT TRIO 3

Content: 90% new wool, 10% nylon

Abrasion: Approx. 100.000 Martindale rubs, EN ISO 12947

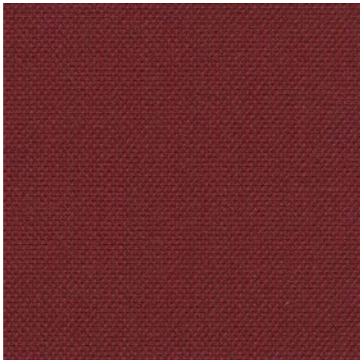
Lightfastness: Note 5-7 ISO 105-B02

Pilling: Note 4, EN ISO 12945

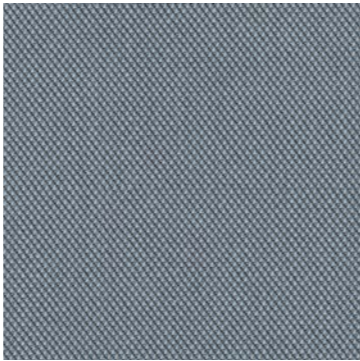
Maintenance: Vacuum clean frequently, ideally every week. Remove stains as soon as they occur, with clean warm water or sparkling water. Extraction clean when necessary. Extraction cleaning might dissolve water-based glue. Pay attention to temperature and amount of cleaning fluid.

Country of Origin: UK

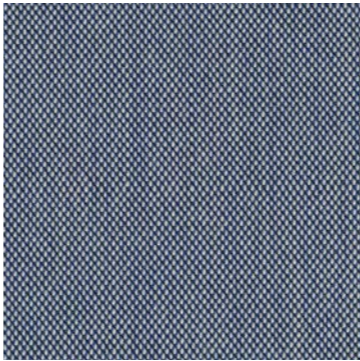
Environment:
EU Ecolabel compliant
No content of PFCs or 'PFAS'
REACH compliant
Californian Proposition 65 list compliant
LBC Red list compliant
Healthier Hospitals compliant



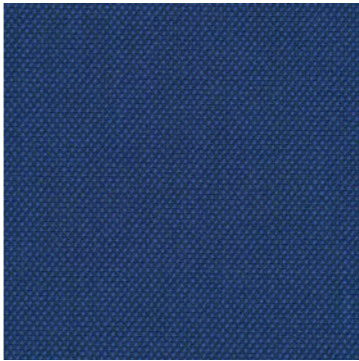
0686



0713



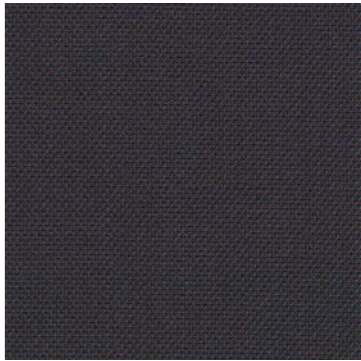
0716



0746



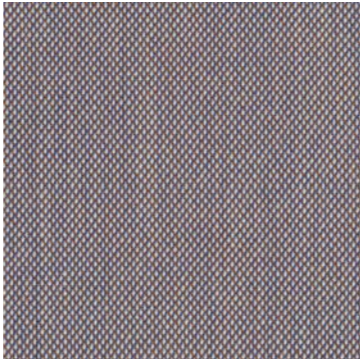
0756



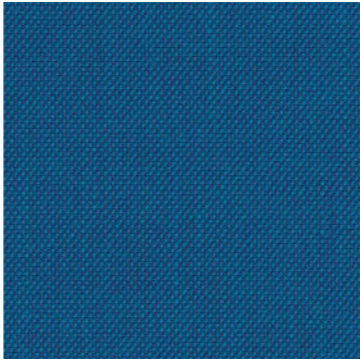
0776



0796



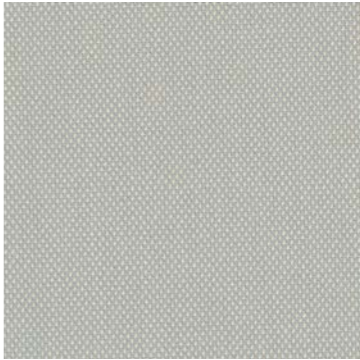
0806



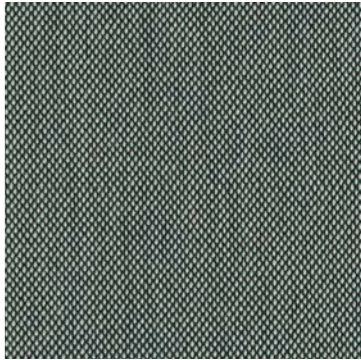
0865



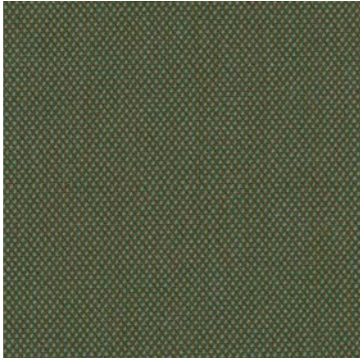
0883



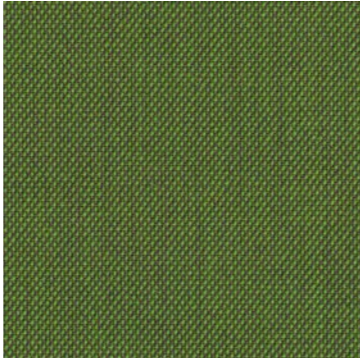
0906



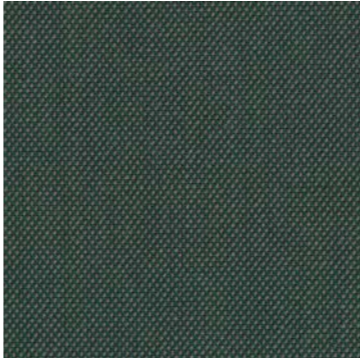
0916



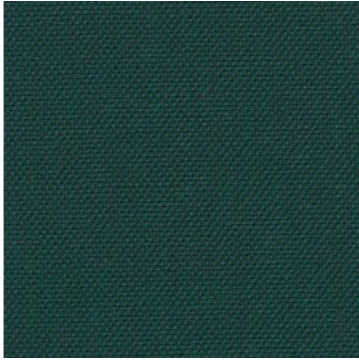
0946



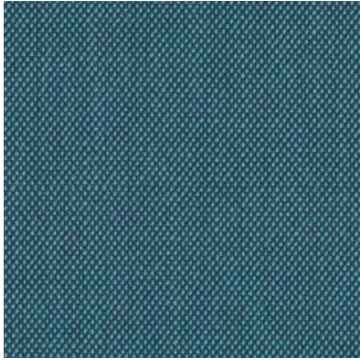
0953



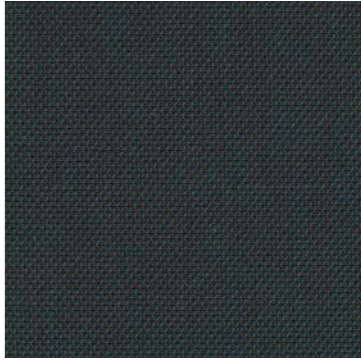
0966



0976



0983



0996

House Fabrics 5 – HF5

HF1 HF2 HF3 HF4 HF5 HF6 HF7

KVADRAT SAHCO - ZERO

Content: 65% cotton, 20% polyacrylic, 15% polyester

Abrasion: 70.000 Martindale rubs, EN ISO 12947

Lightfastness: Note 5-6 ISO 105-B02

Pilling: Note 5, EN ISO 12945

Maintenance: Vacuum clean frequently, ideally every week. Remove stains as soon as they occur, with clean warm water or sparkling water. Extraction clean when necessary. Extraction cleaning might dissolve water based glue. Pay attention to temperature and amount of cleaning fluid.

Country of Origin: Belgium

Environment:
Follow the EU Eco label dye restrictions incl. AZO dye and heavy metal restrictions
No use of halogen based flame retardants (incl. brominated and chlorinated)
REACH compliant
Californian Proposition 65 list compliant
LBC Red list compliant



0001



0002



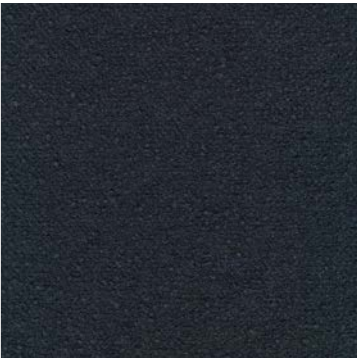
0003



0004



0005



0006



0007



0008



0009



0010



0011



0012



0013



0014



0015



0016

House Fabrics 5 – HF5

HF1 HF2 HF3 HF4 **HF5** HF6 HF7

KVADRAT SAHCO - ELLE

Curled Bouclé

Content: 25% cotton, 20% polyacrylic, 20% wool, 20% viscose, 15% polyamide

Application: Indoor upholstery

Abrasion: 70,000 Martindale

Lightfastness: 6 (ISO 1-8)

Finish: None

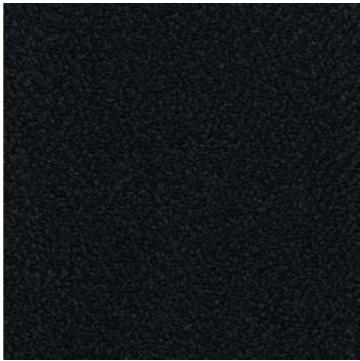
Maintenance: Do not wash. Do not bleach. Do not tumble dry. Iron at low temperature (max. 110°C), steam may cause damage. Professional dry cleaning with tetrachloroethylene, mild process

Country of Origin: Italy

Environmental:
Greenguard Gold



0150



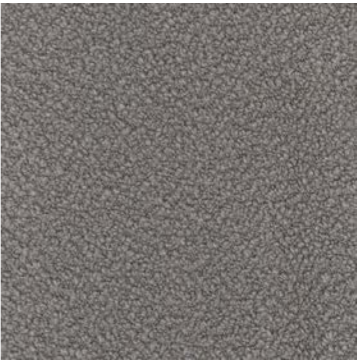
0180



0200



0220



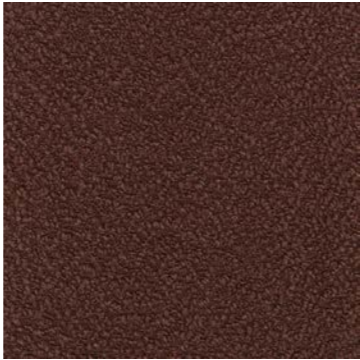
0230



0280



0290



0350



0390



0480



0530



0680



0750



0950

House Fabrics 5 – HF5

HF1 HF2 HF3 HF4 HF5 HF6 HF7

KVADRAT - SISU

Content: 91% Norwegian wool, 8% New Zealand wool, 1% nylon

Abrasion: Approx. 70.000 Martindale rubs, EN ISO 12947

Lightfastness: Note 5-7 ISO 105-B02

Pilling: Note 3-4, EN ISO 12945

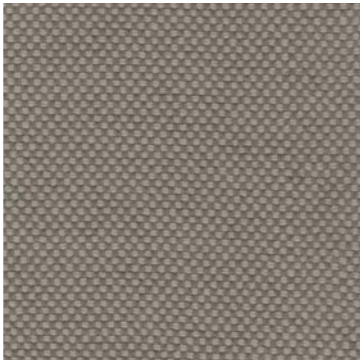
Maintenance: Vacuum clean frequently, ideally every week. Remove stains as soon as they occur, with clean warm water or sparkling water. Extraction clean when necessary. Extraction cleaning might dissolve water-based glue. Pay attention to temperature and amount of cleaning fluid.

Country of Origin: Norway

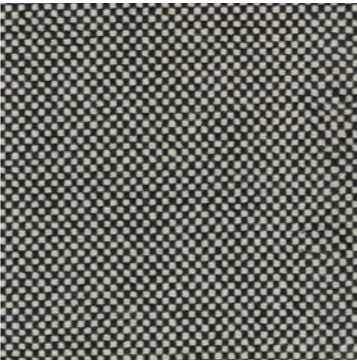
Environment: Follow the EU Ecolabel dye restrictions incl. AZO dye and heavy metal restrictions No content of PFCs or 'PFAS' REACH compliant Californian Proposition 65 list compliant LBC Red list compliant Healthier Hospitals compliant



0105



0125



0165



0175



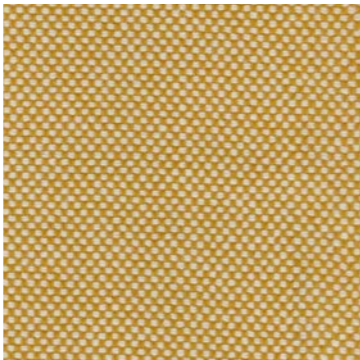
0195



0225



0375



0405



0525



0645



0655



0765



0775



0785



0805



0885

House Fabrics 6 – HF6

HF1 HF2 HF3 HF4 HF5 **HF6** HF7

MAHARAM - HEARTH

Content: 32% Wool, 31% Acrylic, 30% Cotton, 7% Polyester

Application: Indoor upholstery

Abrasion: 80,000 double rubs Wyzenbeek

Lightfastness: AATCC 16E, 40+ hours

Finish: None

Maintenance: S-Clean with mild, water-free dry cleaning solvent.

Country of Origin: Belgium

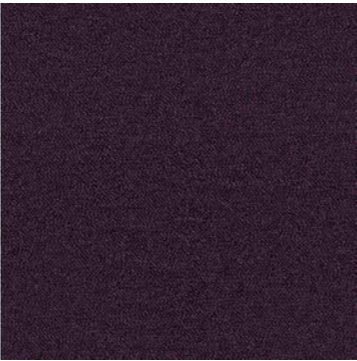
Environmental:
Greenguard and Greenguard Gold Certified
Healthier Hospitals Compliant
LBC Red List Free
REACH Compliant
Contains Bio-Based Materials
FR Free
PFAS-Free



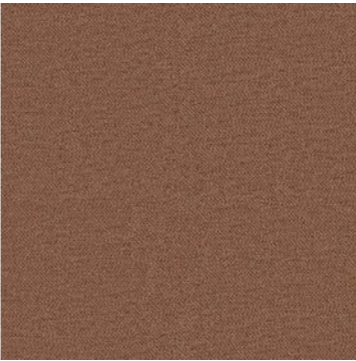
466536-001 Wedding



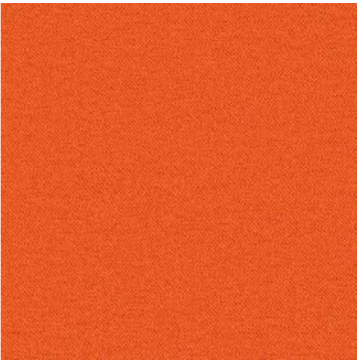
466536-002 Sherbet



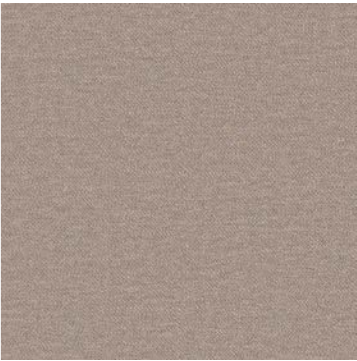
466536-003 Regnant



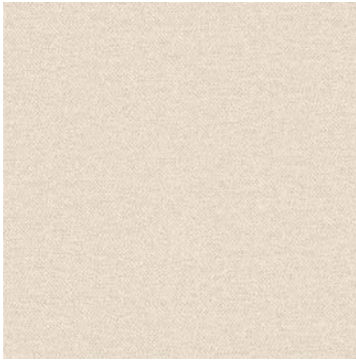
466536-004 Coffeehouse



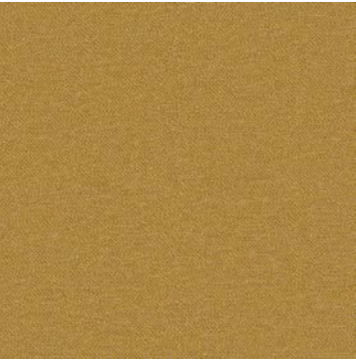
466536-005 Goldfish



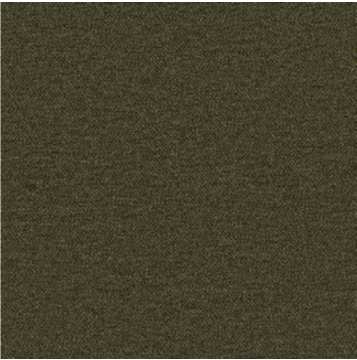
466536-006 Stardust



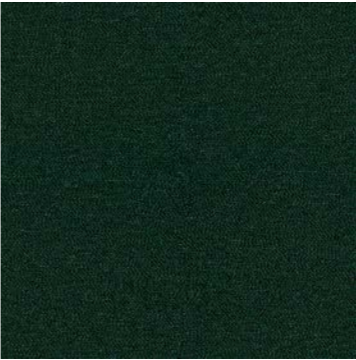
466536-007 Amphitheater



466536-008 Gingersnap



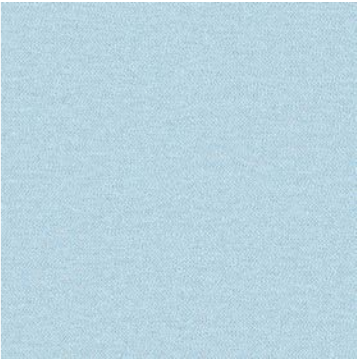
466536-009 Downfield



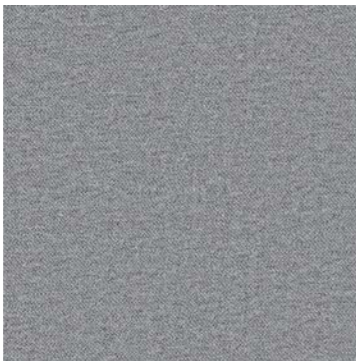
466536-010 Subtropical



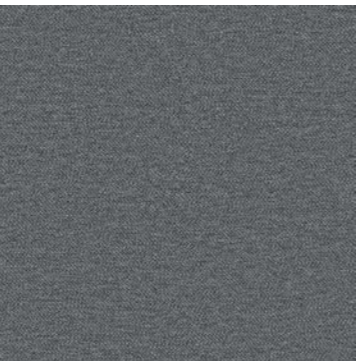
466536-011 Undersea



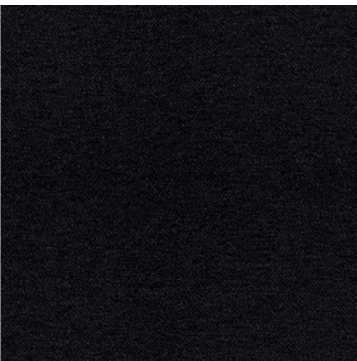
466536-012 Kite



466536-013 Mystical



466536-014 Moonlet



466536-015 Bonobo

House Fabrics 6 – HF6

HF1 HF2 HF3 HF4 HF5 **HF6** HF7

KVADRAT - MOSAIC 2

Content: 27% new wool, 9% nylon, 12% polyester, 6% elastane, 46%

Abrasion: Approx. 100.000 Martindale rubs, EN ISO 12947

Lightfastness: Note 5-7, ISO 105-B02

Pilling: Note 4-5, EN ISO 12945

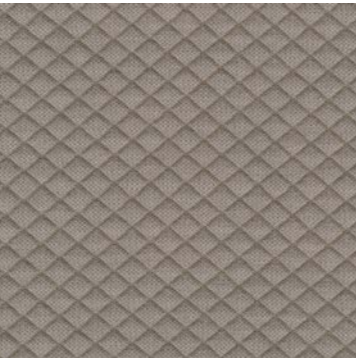
Maintenance: Vacuuming clean gently, ideally every week. Washable at 30°C if loose covers. Flat drip drying

Country of Origin: The Netherlands

Environment:
REACH compliant
Follow the EU Ecolabel dye restrictions incl. AZO dye and heavy metal restrictions
No use of halogen-based flame retardants (incl. brominated and chlorinated)
No content of formaldehyde



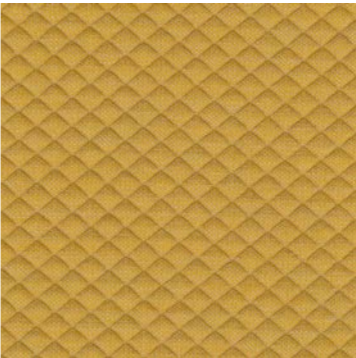
0182



0222



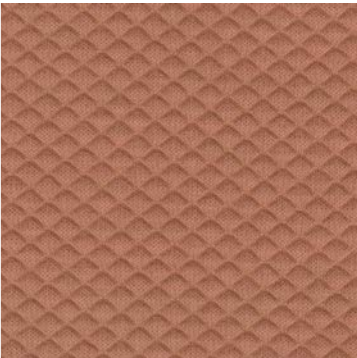
0262



0422



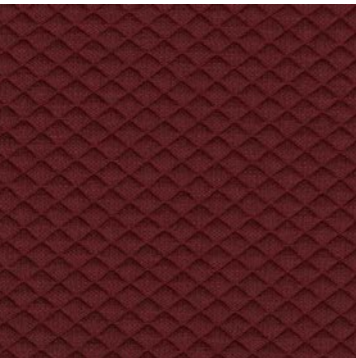
0472



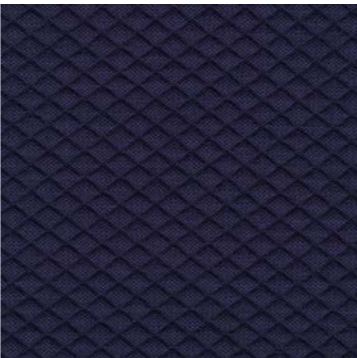
0532



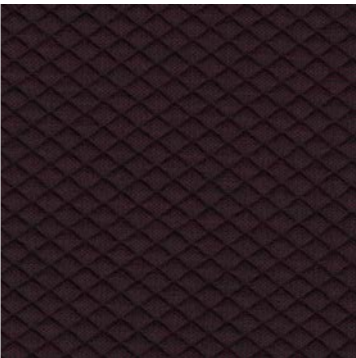
0642



0662



0672



0682



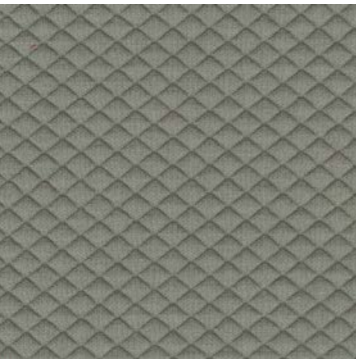
0692



0722



0772



0922



0972

House Fabrics 6 – HF6

HF1 HF2 HF3 HF4 HF5 **HF6** HF7

KVADRAT - PHLOX

Content: 90% cotton, 10% polyester

Abrasion: Approx. 100.000 Martindale rubs, EN ISO 12947

Lightfastness: Note 5-7 ISO 105-B02

Pilling: Note 4, EN ISO 12945

Maintenance: Vacuum clean frequently, ideally every week. Remove stains as soon as they occur, with clean warm water or sparkling water. No ironing only steaming. Steaming might be necessary to remove pressure marks. Extraction clean when necessary. Extraction cleaning might dissolve water-based glue.

Country of Origin: Italy

Environment: Follow the EU Ecolabel dye restrictions incl. AZO dye and heavy metal restrictions

No content of PFCs or 'PFAS' REACH compliant Californian Proposition 65 list compliant LBC Red list compliant Healthier Hospitals compliant



0133



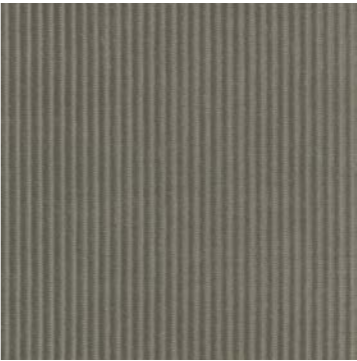
0183



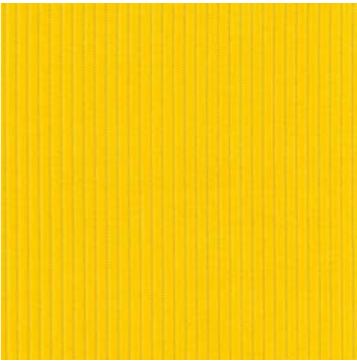
0193



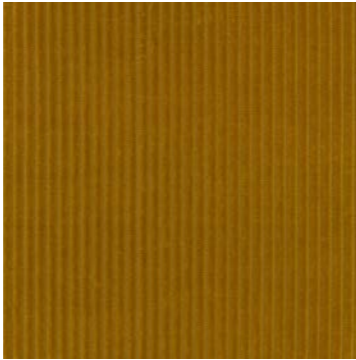
0213



0243



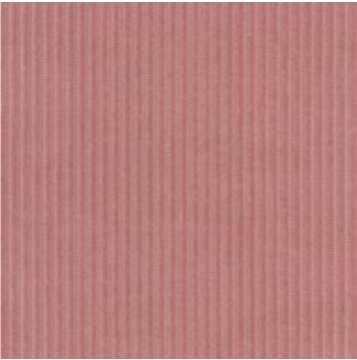
0433



0443



0563



0633



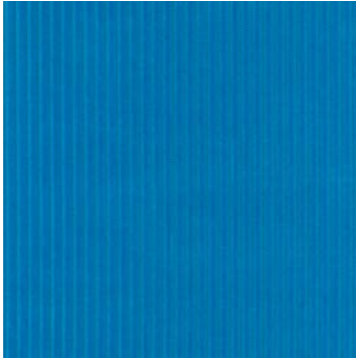
0743



0763



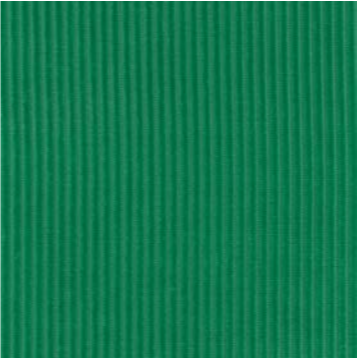
0783



0833



0883



0933



0943



0983

House Fabrics 7 – HF7

HF1 HF2 HF3 HF4 HF5 HF6 HF7

KVADRAT - CODA 2

Woven

Content: 90% New wool, 10% Nylon

Application: Indoor upholstery

Durability: 100,000 Martindale

Lightfastness: 6

Pilling: 4 (ISO 1-5)

Maintenance: Do not bleach, Vacuuming and Professional dry cleaning with tetrachloroethylene, normal process

Country of Origin: Norway

Sustainability:

Greenguard Gold

HPD

EPD

Seat pads made in this material are for trade only.



0100



0103



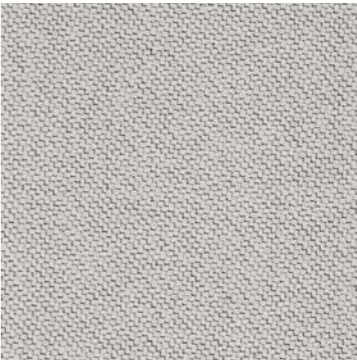
0116



0182



0222



0232



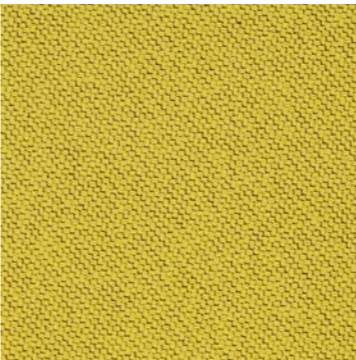
0242



0362



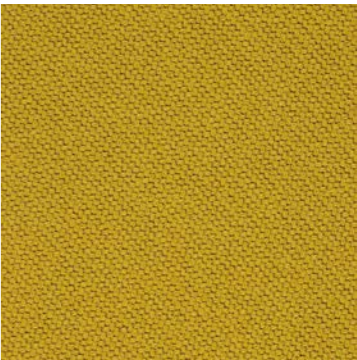
0382



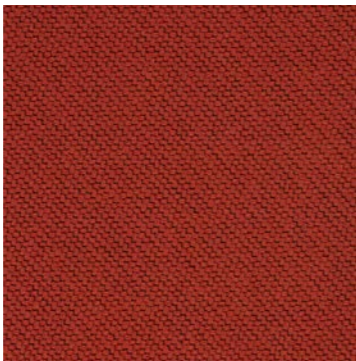
0410



0422



0442



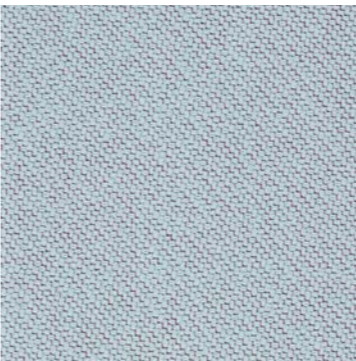
0610



0632



0642



0722



0762



0962

House Fabrics 7 – HF7

HF1 HF2 HF3 HF4 HF5 HF6 HF7

KVADRAT FEBRIK - GENTLE 2

Knitted Upholstery, Velvet-like

Content: 60% New wool, 20% Nylon, 20% Polyester

Application: Indoor upholstery

Durability: 90,000 Martindale

Lightfastness: 6-7 (ISO 1-8)

Pilling: 4-5 (ISO 1-5)

Maintenance: Do not bleach, or iron, only steam. Vacuuming and Professional dry cleaning with tetrachloroethylene, normal process

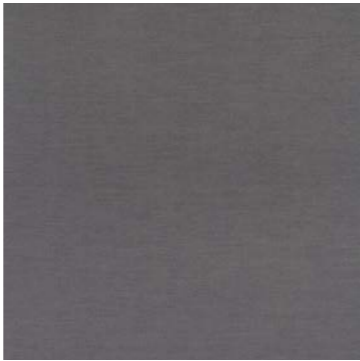
Country of Origin: Holland

Sustainability: Greenguard Gold HPD EPD

Seat pads made in this material are for trade only.



0113



0133



0183



0193



0203



0223



0373



0443



0553



0573



0623



0663



0673



0683



0733



0753



0783



0873

House Fabrics 7 – HF7

HF1 HF2 HF3 HF4 HF5 HF6 **HF7**

KVADRAT FEBRIK - GENTLE 2

Knitted Upholstery, Velvet-like

Content: 60% New wool, 20% Nylon, 20% Polyester

Application: Indoor upholstery

Durability: 90,000 Martindale

Lightfastness: 6-7 (ISO 1-8)

Pilling: 4-5 (ISO 1-5)

Maintenance: Do not bleach, or iron, only steam. Vacuuming and Professional dry cleaning with tetrachloroethylene, normal process

Country of Origin: Holland

Sustainability:
Greenguard Gold
HPD
EPD

Seat pads made in this material are for trade only.



0933



0963



0973

Contact

info@designbythem.com

+612 8005 4805

designbythem.com

@designbythem

Fabric swatches courtesy of
© Kvadrat and © Maharam.

Product photography by Pete Daly.

