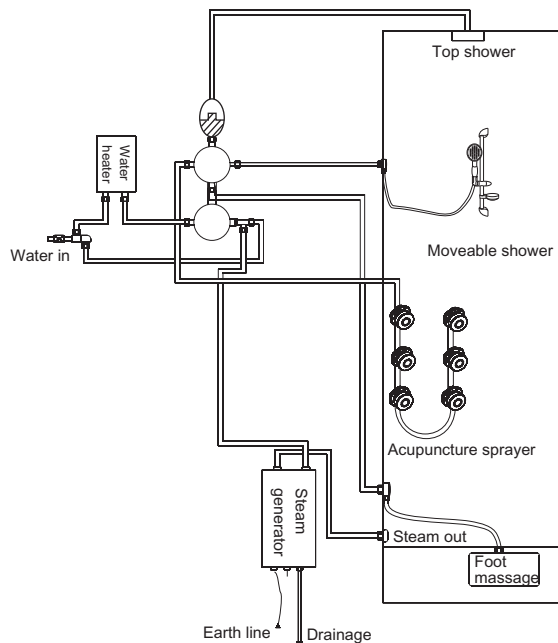


## Drawing of water connection

MESDA



### Instructions:

1. You should install the water heater yourself.
2. As the "⊕" and "⊖" from the picture, please make the connection according to the serial number v1, v2, etc.

## WS-905 PRODUCT MANUAL

★All we do our best for the particular and definitude of the products information making , but only for reference , please depend on the practise and reality in detail .

★Our company keep down the authority of amending the aspects and the spare parts , according as the scheme's or parameter's redressal

which was come out from technical renewal , sorry to will not offer any notice.

★our company reserve the final explanation and modify right for all the contents.



Do not dispose this product as unsorted municipal waste. Collection of such waste separately for special treatment is necessary.

Dear Guest,

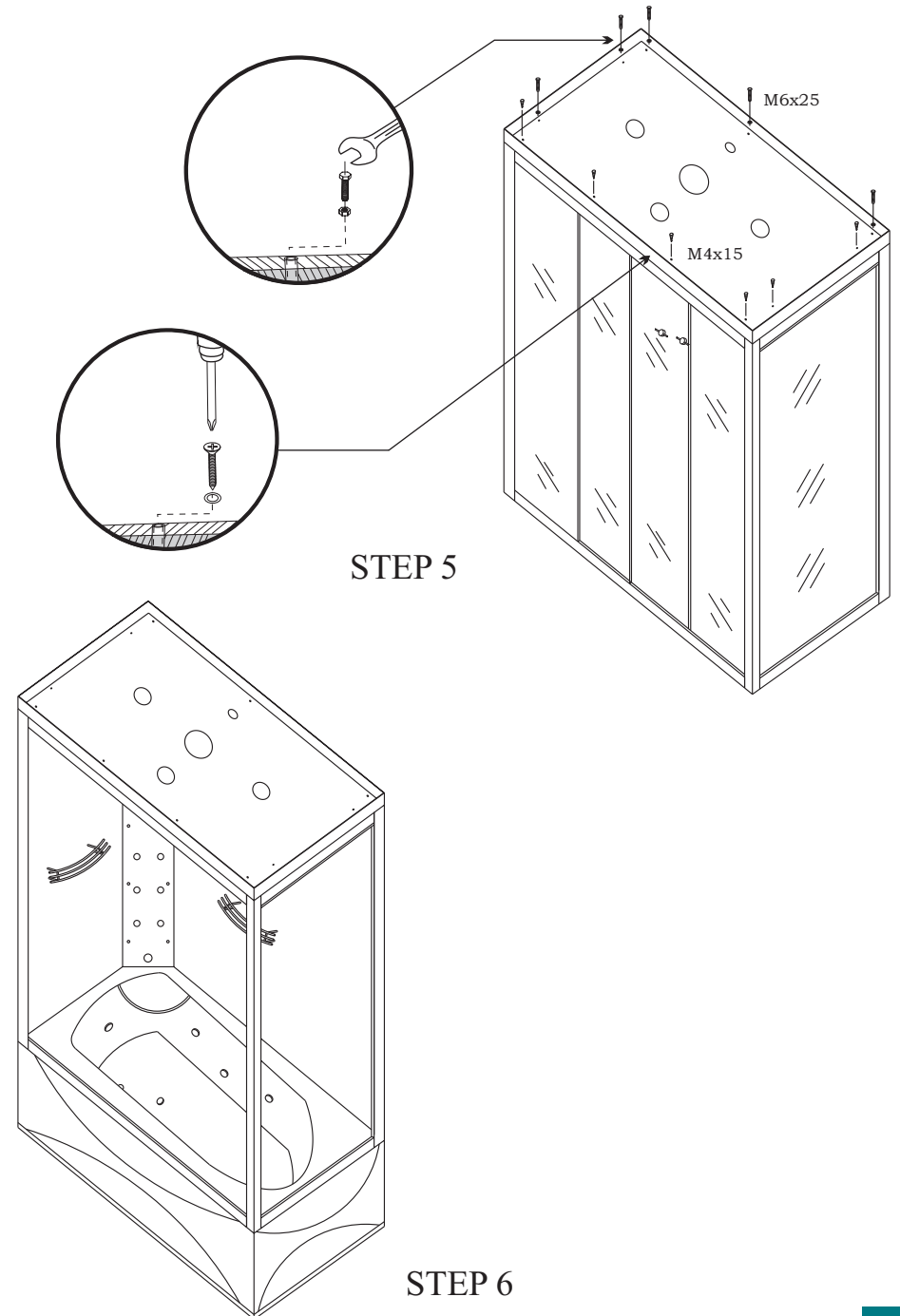
Thank you very much for purchasing our sanitary ware. To enable you to use this product safely and effectively, please read this installation and operation manual carefully before use.

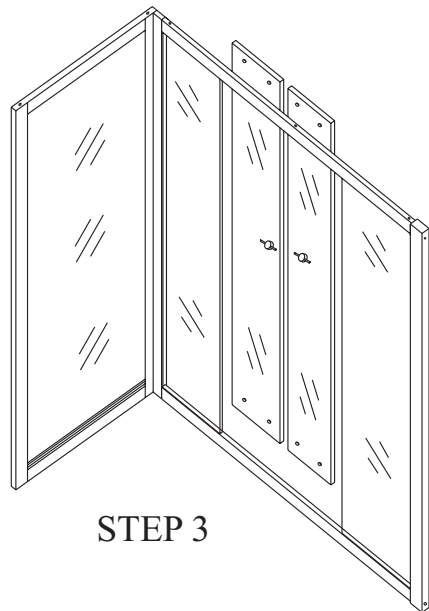
CAUTIONS

1. Please ensure that the product installed reliable electric leakage protection device, the power plug contains earth line, and make sure it is reliable earth line. Check the protect system of leakage protection each time before use.
2. Do not turn on water pump, heat pump or air bubble pump without water.
3. Before turn on water pump, check if the water level over jets 10 to 20 mm or not, make sure regular usage of water pump otherwise it will be destroy because of water leakage.
4. People with Hypertension symptom, after drink or heart disease are not allowed to use the bathtub. Children have a bath must under adult's guidance.
5. During use please noticed that don't blocked the jets and avoiding the air adjustment valve overflowing. Also keep the bathtub clean and don't let it blocked by hair or mess.
6. During use, please firstly adjust the water temperature or it will be burned.
7. The bathtub is designed with ergonomic, rise and fall changes are quite big so during usage pay more attention of be slipped.
8. Please shut down the system when not to use.

TECHNIQUE PARAMETER

Voltage	Frequency	Water Volatge	Power of steam generator	Power of water pump
AC220V(±10%)	50/60HZ	0.1~0.2Mpa	3KW	1HP

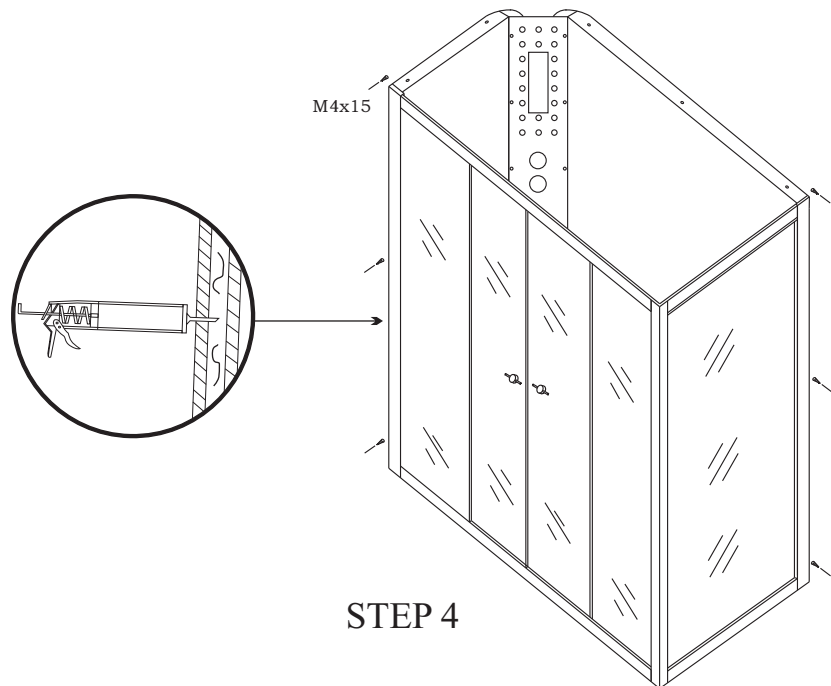




Active chain wheel of glass

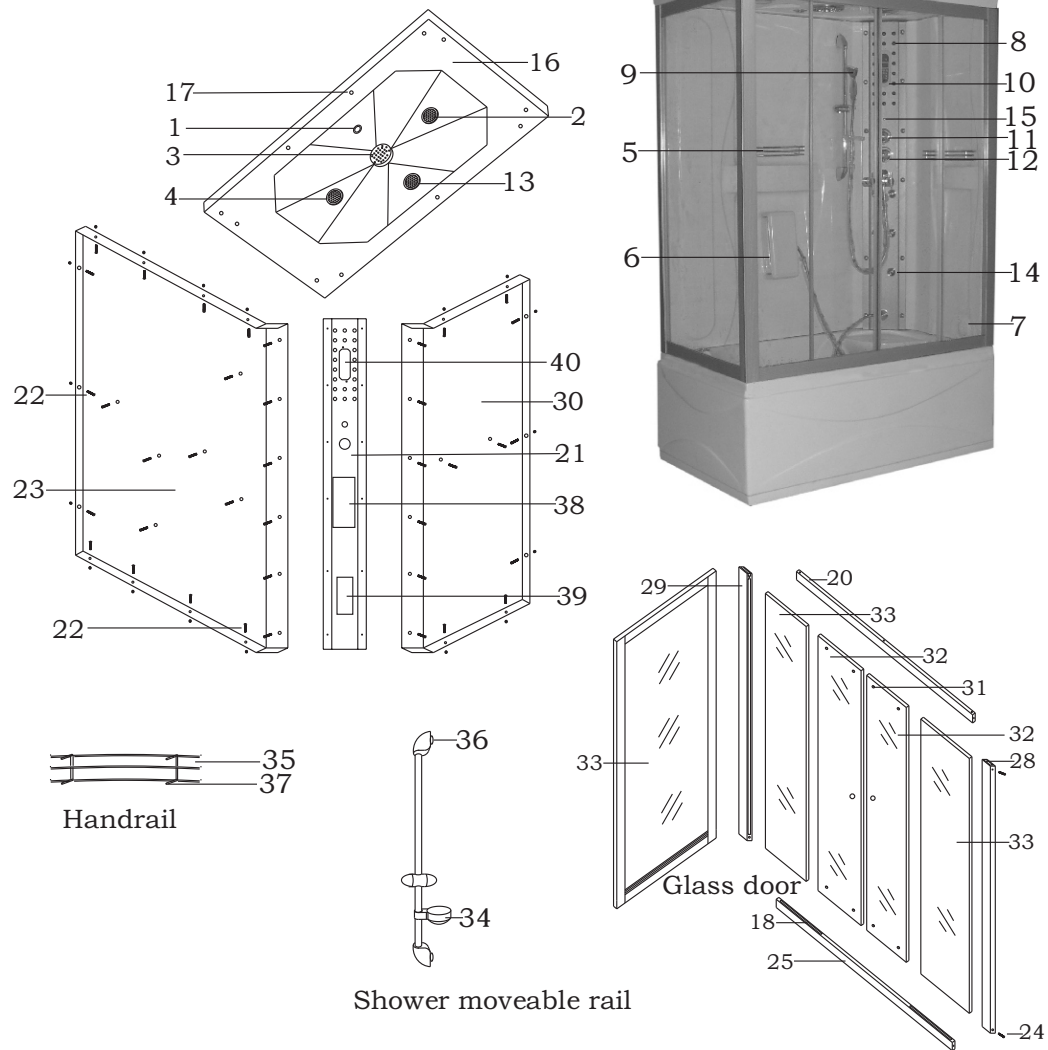


STEP 3

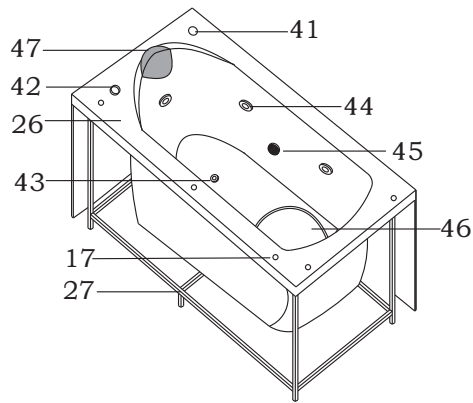


STEP 4

CONSTRUCTION SKETCH

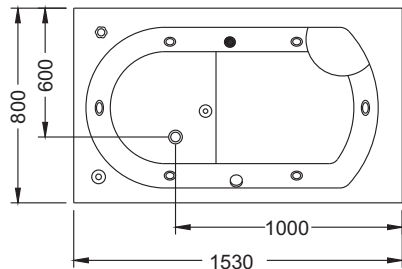
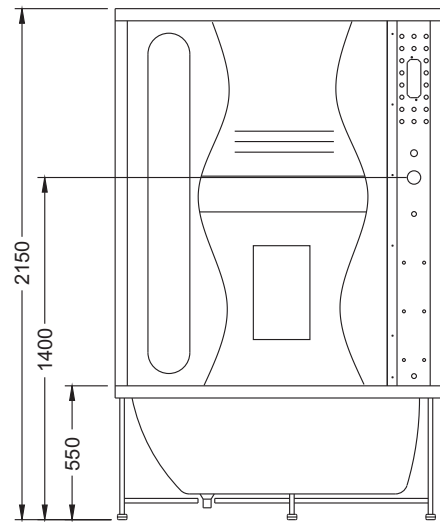


- |                    |                           |                       |                          |
|--------------------|---------------------------|-----------------------|--------------------------|
| 1、 roof lamp       | 11、 function shift switch | 31、 glass chain wheel | 21、 decorated board      |
| 2、 speaker         | 12、 cold/hot water switch | 32、 moveable glass    | 22、 6X25screw            |
| 3、 top shower      | 13、 ozone                 | 33、 fixed glass       | 23、 right body           |
| 4、 exhaust fan     | 14、 water jet             | 34、 soap box          | 24、 4X25self-fixed screw |
| 5、 handrail        | 15、 temperature needle    | 35、 handrail          | 25、 down holder          |
| 6、 foot massage    | 16、 body roof             | 36、 installation hole | 26、 bottom bathtub       |
| 7、 steam out       | 17、 screw hole            | 37、 drainage switch   | 27、 bottom shelf         |
| 8、 decorated light | 18、 glass holder          | 38、 electric box      | 28、 fixed holder         |
| 9、 moveable shower | 19、 right holder          | 39、 water tank        | 29、 left holder          |
| 10、 control panel  | 20、 up holder             |                       | 30、 left body            |

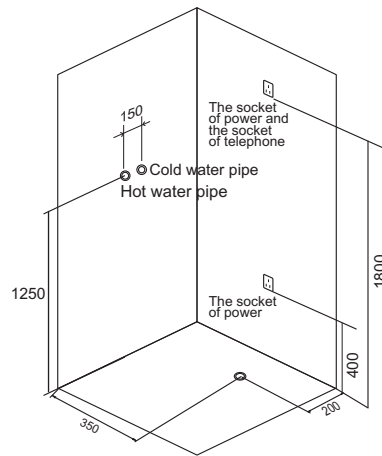


- 40、control panel
- 41、air supply valve
- 42、air-pressure switch
- 43、drainage
- 44、water jet
- 45、water in
- 46、seat
- 47、pillow

INSTALLATION SKETCH



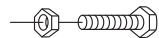
905SIZE: 1530×800×2150mm



Other screws  
M4x15 M4x25



Install the screw  
M6x25



Active chain wheel of glass

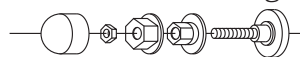


ILLUSTRATION OF INSTALLATION

1. The products should be installed by technical guy who are got the certificate or those technical who are assign by dealers. The main power switch and electronic leakage device should be installed.
2. The plug of electronic should be installed above the steam generator and the length of electronic wire not less then 1800MM from the earth.
3. There are should be with main power switch for hot and cold water pipe of steam room and the water pipe should be connect to drainage water pipe.
4. Install the products according to the diagram of installation When fixed the place for the products.

INSTALLATION PROCESS

