



GRILLES WITH LED LIGHTING

2013-2014 Ford Mustang GT/ V6

INSTALLATION INSTRUCTIONS

CONTENTS

(1) Upper Grille SKU 4118862--A

If Purchased with Optional Grille Lights

- (1) Pair of Grille Lights
- (6) Phillips Screws
- (6) Flat Washers
- (6) Threaded Clips

If Purchased with Optional Lower Grille

- (1) Lower Grille SKU 411862-C

TOOLS REQUIRED

- 7mm Socket
- 8mm Socket
- 10mm Socket
- Ratchet
- Flathead Screwdriver
- Panel Removal Tool
- Drill
- 3/16th Drill Bit

SKU #411862



STEP 1



Using a panel removal tool, remove (8) push clips from the radiator cover. Lift radiator cover and set aside.

STEP 2



Remove (4) 8mm bolts, as well as (4) Phillips push clips. Unscrew the middle of the push clips using a Phillips screwdriver, then remove the base with a panel removal tool.

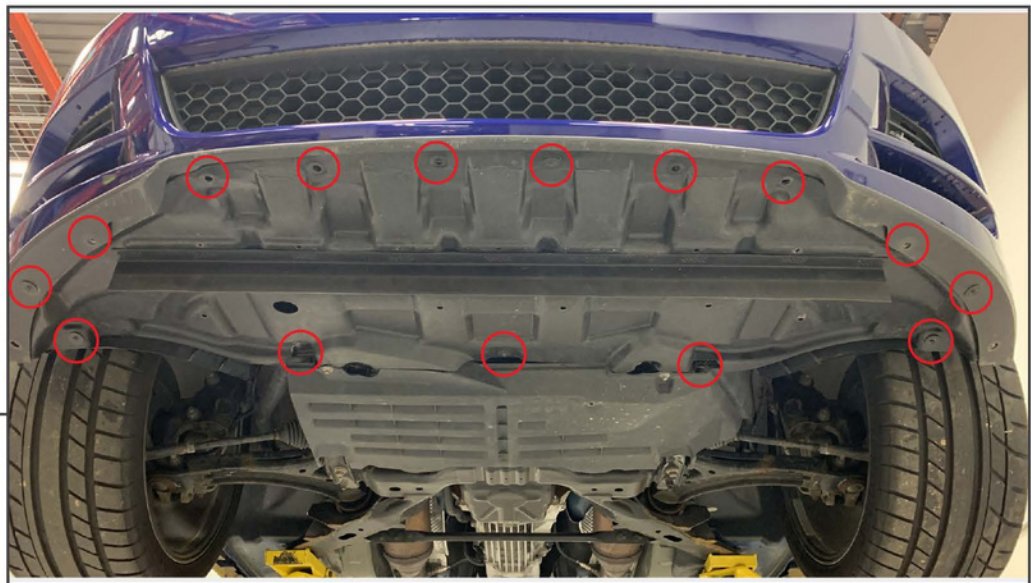


STEP 3



Remove (3) 7mm bolts and (1) Phillips push clip per side.

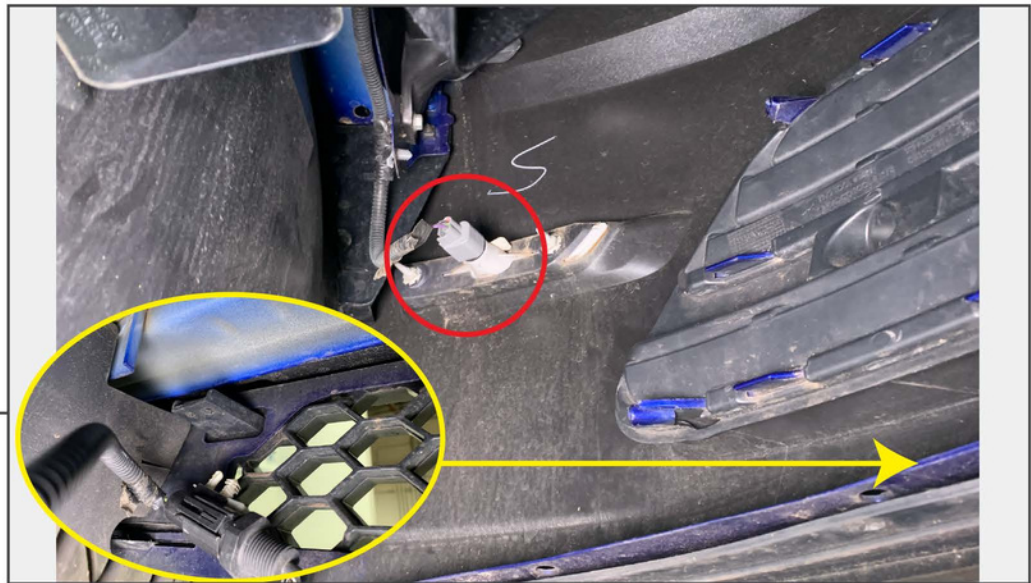
STEP 4



Remove splash shield by removing (15) 7mm screws. Remove splash shield from vehicle.



STEP 5



Unplug the turn signal connectors from each side of the bumper. Behind the face of the bumper, remove the sensor from the grille by pulling it down, away from the bumper.

STEP 6



Release each side of the bumper by firmly pulling along the edge. Then firmly pull the bumper away from the vehicle as the bumper is clipped to the vehicle.

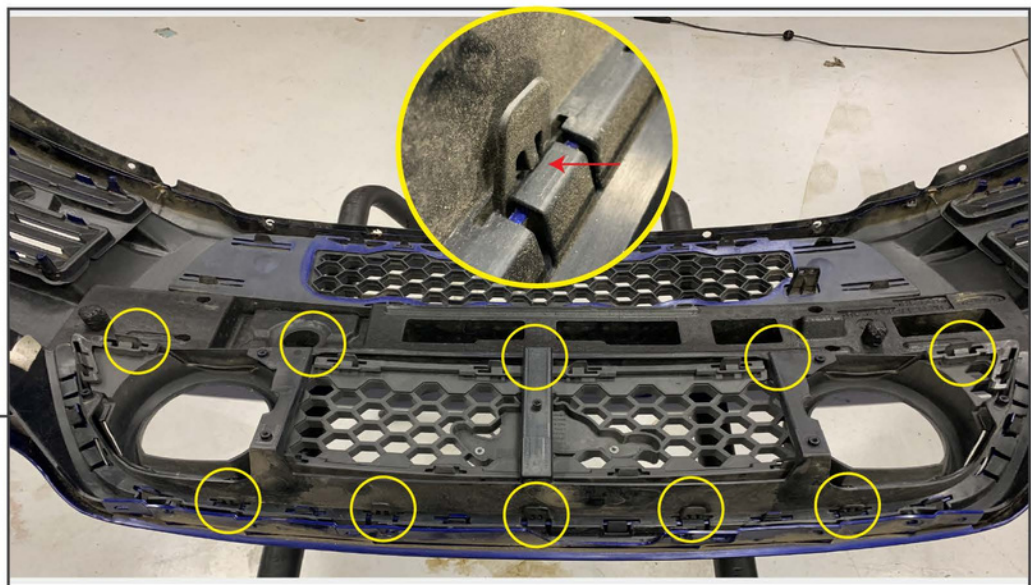


STEP 7



Unplug the fog light harnesses from the fog light housings. Remove bumper from vehicle and place on a soft surface for grille disassembly.

STEP 8

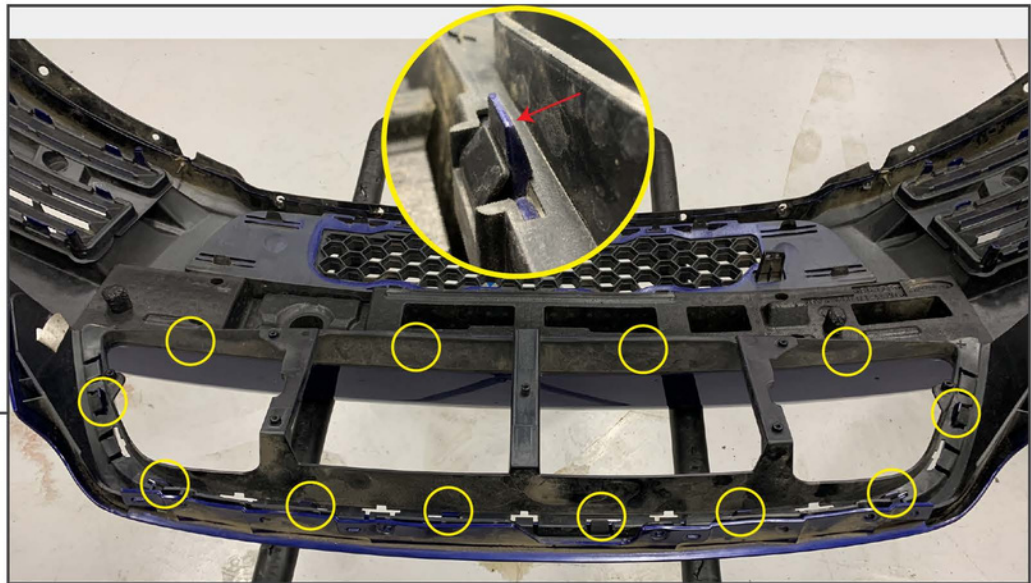


Remove the outer layer of the upper grille by pushing in the tabs with a flathead screwdriver while putting slight pressure down on the panel. The grille will be removed through the face of the bumper cover.

Note: These clips are very stiff, take your time.



STEP 9



Using a flathead screwdriver, pry back on the clips on the inner layer of the grille.

Note: These clips are very stiff, take your time.

**STEP 10
(W/ LED Lights)**



If purchased with LED Grille lights, drill a 3/16 hole into the grille at the designated areas first. Place (3) threaded clips onto the light assembly and place the light through the front of the grille. Align the pre-drilled holes with the threaded clips. Secure the lights to the grille using provided washers and Phillips screws.

Tip: For ease of installation, hold the threaded clip with needle nose pliers to help align the Phillips screw during installation.

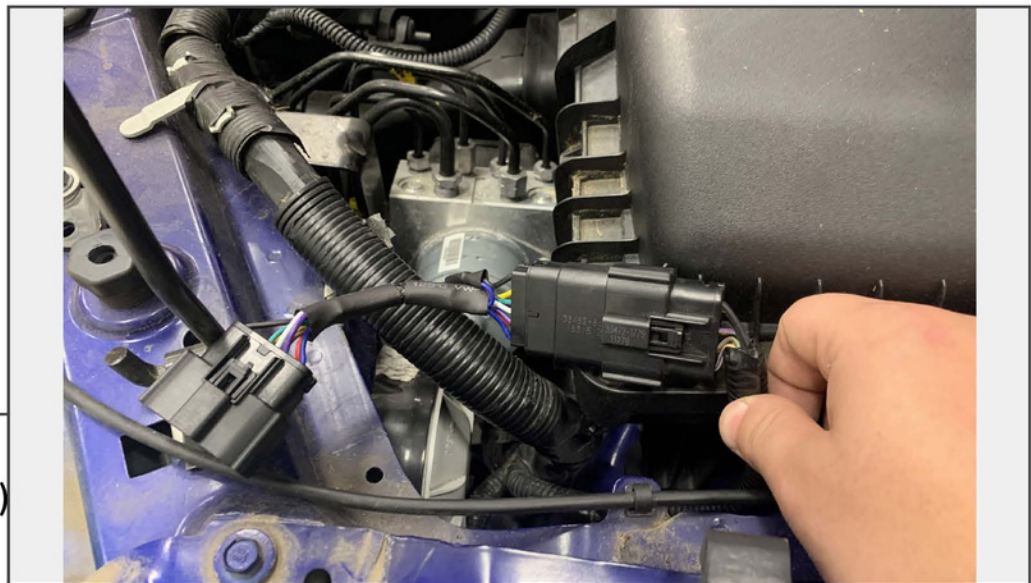


STEP 11



Install the new grille(s) into the bumper by aligning the clip locations with the factory holes. Firmly press the grille through the bumper. You will hear it snap into place.

STEP 12 (W/ LED Lights)



If purchased with LED Grille lights, route the grille light wiring to the headlight plug. Install the grille light T-Harness into the factory headlight harness. Clean a suitable location on the vehicle, peel back the tape backing from the control box, and secure it to the vehicle.

Turn the key to the 'On' position to test light functionality. Light will not function correctly without key in the 'On' position. If light does not power on, ensure the headlight connections locked into place.



STEP 13

Reinstall bumper to vehicle in reverse order.

Installation is now complete.