



**2021 Ford Bronco
RTR Rock Sliders**

Part numbers:

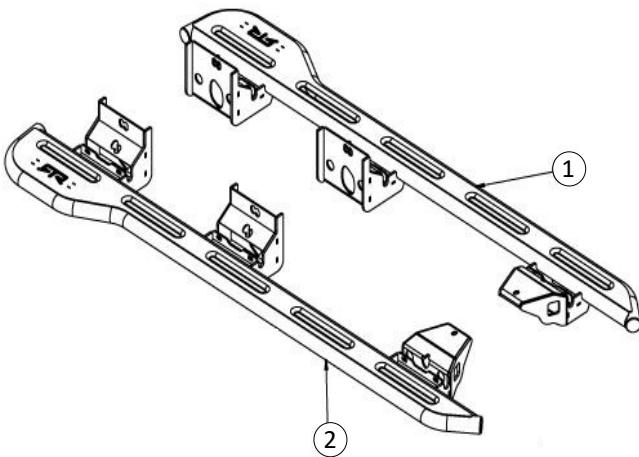
- 14021.0009.14.A** 2 Door
- 14021.0010.14.A** 4 Door

Components Included

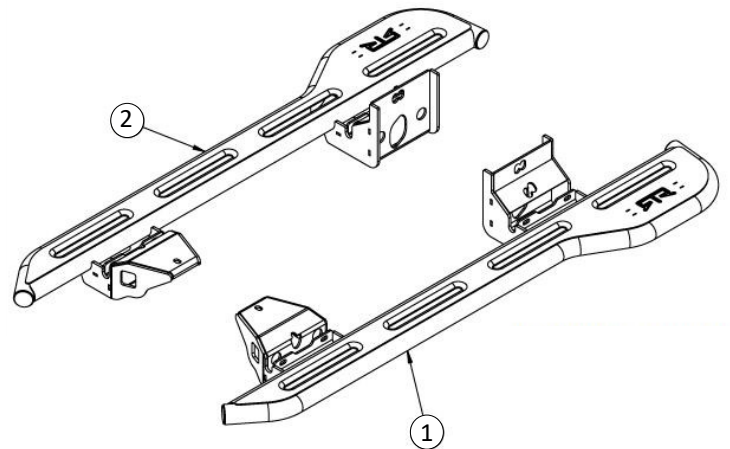
- 1. **RTR Rock Slider-Left** 1
- 2. **RTR Rock Slider-Right** 1
- 3. **Hardware pack**– not shown 1

NOTE: This instruction manual depicts installation of the RTR Rock Sliders on a 4 door Bronco. While the 2 door model has less mounting points, the general installation procedure remains the same.

Design and specifications are subject to change without notice.



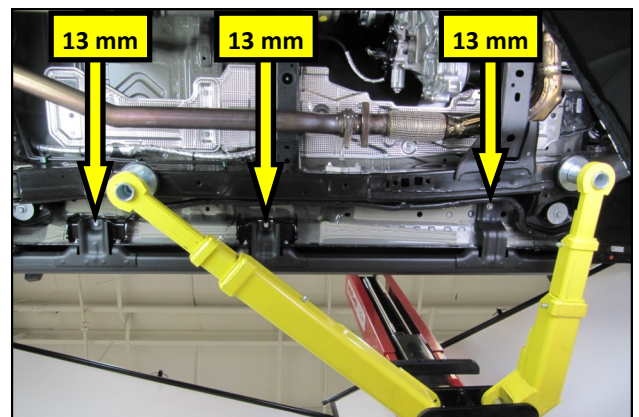
4 DOOR ROCK SLIDERS



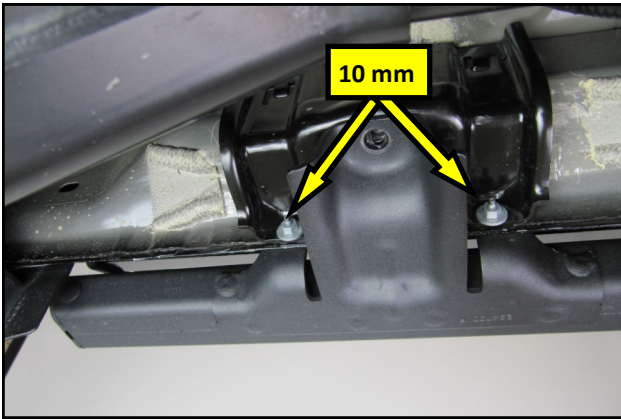
2 DOOR ROCK SLIDERS



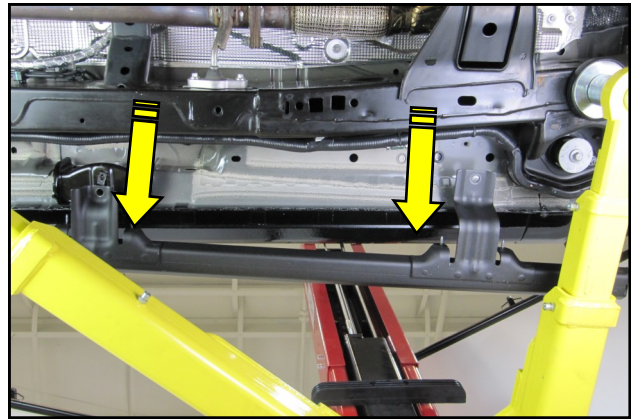
1. For ease of installation safely support the vehicle using an automotive lift or jack stands and remove the wheels and tires.



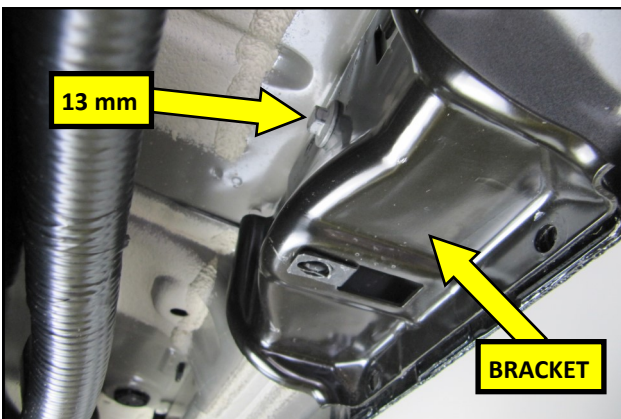
2. Remove the vertical bolts securing the OEM rock rail or steps the vehicle. Depending on your configuration, there will be between 2 and 6.



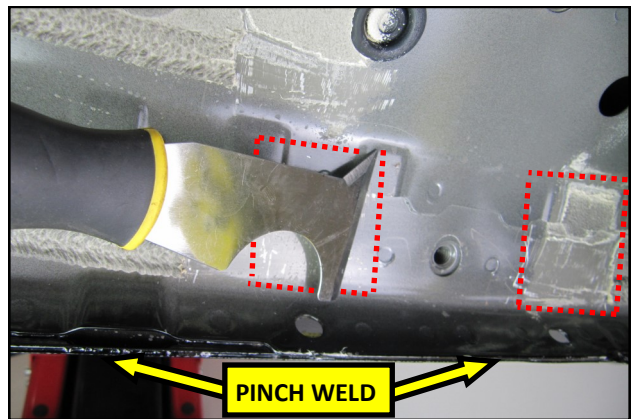
3. If the vehicle is equipped with the OEM rock rails, remove the flange nuts from both sides of each mount and set them aside.



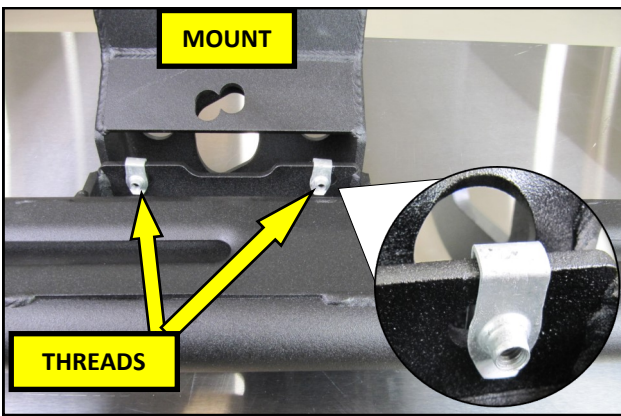
4. Remove the OEM rock rail or step from the vehicle as shown.



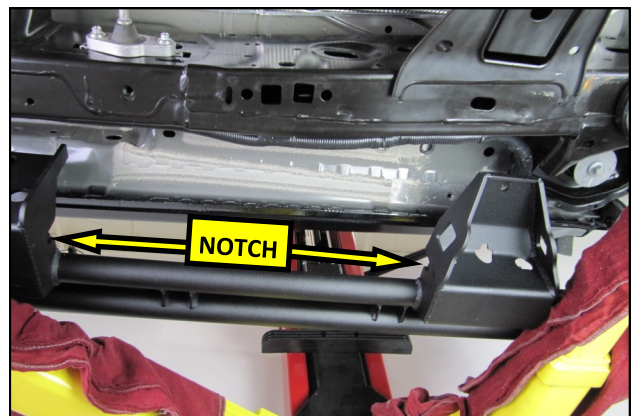
5. If the vehicle is equipped with the OEM rock rails, remove the horizontal bolt from the rail bracket and remove the bracket from the vehicle. Depending on the vehicle type, there will be 1 or 2.



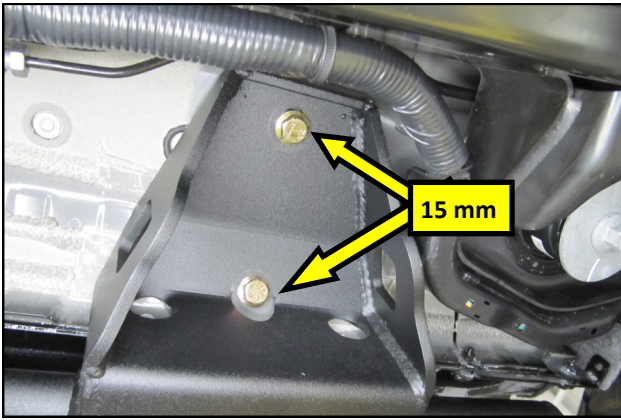
6. Using a gasket scraper or equivalent, remove approximately 3 square inches of body adhesive from both sides of the front and rear mounting holes, directly above the pinch weld.



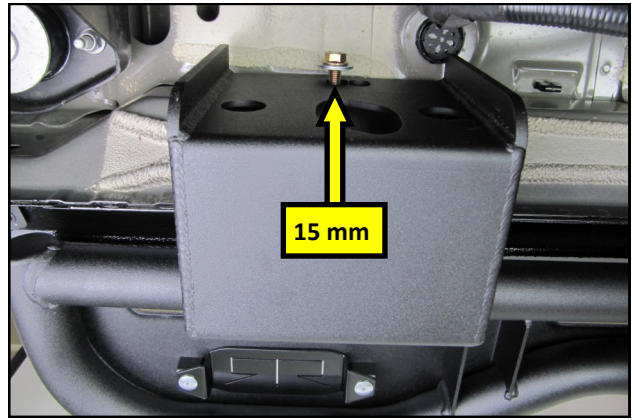
7. Slide the 6mm Speed Nuts onto the RTR Rock Slider as shown, with the threads pointing away from the mounts.



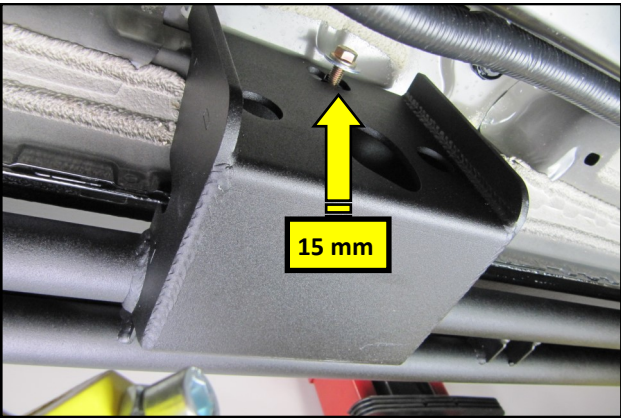
8. With a protected work surface underneath it, position the Rock Slider underneath the vehicle and align the notch with the pinch weld.



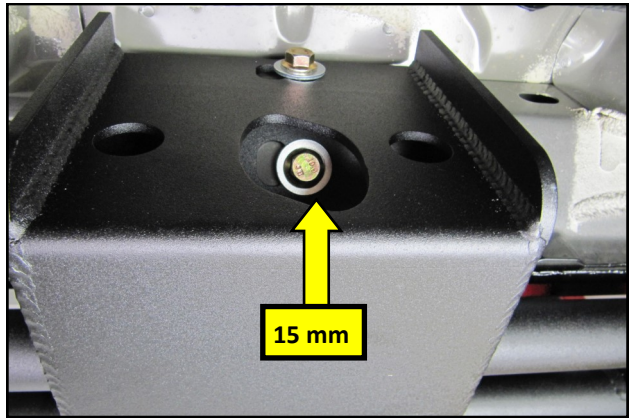
9. With the help of an assistant, raise the front of the Slider up and onto the pinch weld and secure it to the body using two of the supplied 10 MM Bolts. Leave the Bolts finger tight for now.



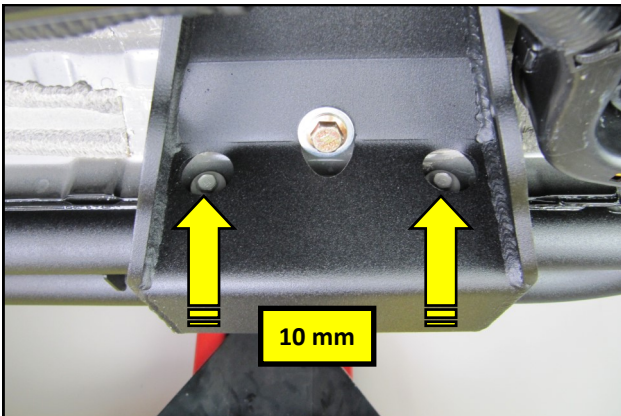
10. Raise the rear of the Slider up and onto the pinch weld and secure it to the body using one set of the supplied 10 MM Bolts and Washers. Leave the Bolt finger tight for now.



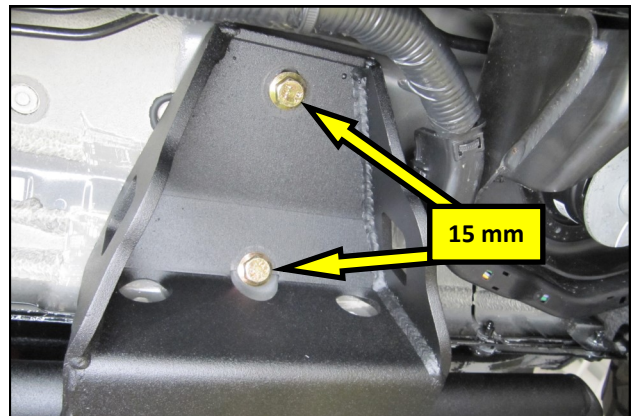
11. 4 Door Sliders have a center mount. Secure it to the body using one set of the supplied 10 MM Bolts and Washers. Leave the Bolt finger tight for now.



12. Using a 3" extension and a 15 MM socket, install a second set of 10MM Bolts and Washers into the angled plates of the rear and center mounts, if so equipped. Again, leave the Bolts finger tight at this time.



13. Insert two of the supplied 6 MM Bolts into each mount, through the pinch weld, and into the Speed Nuts from step 7. Using a 10 MM socket, tighten each Bolt to 124 lb.in.



14. Starting from the front and working your way rearward. Torque all of the 10MM Mount Bolts to 37 lb.ft. Repeat steps 2-14 on the opposite side of the vehicle.

**THIS PAGE HAS INTENTIONALLY BEEN LEFT
BLANK**