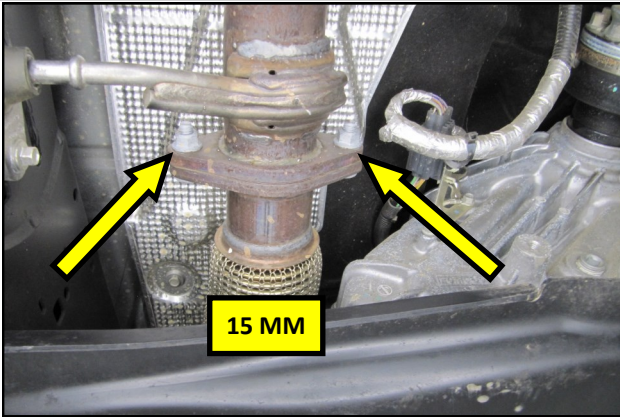


2021-22 Ford Bronco
RTR High Clearance Ex-
haust System
2 Door/4 Door
2.3 & 2.7L
Part Number 14111.0001.88.A

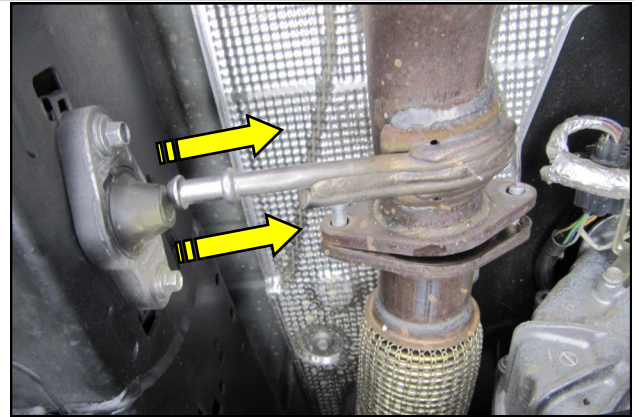
Components Included

1.	A Pipe	1
2.	Muffler	5
3.	B Pipe	2
4.	C Pipe	5
5.	D Pipe	1
6.	Clamp	4

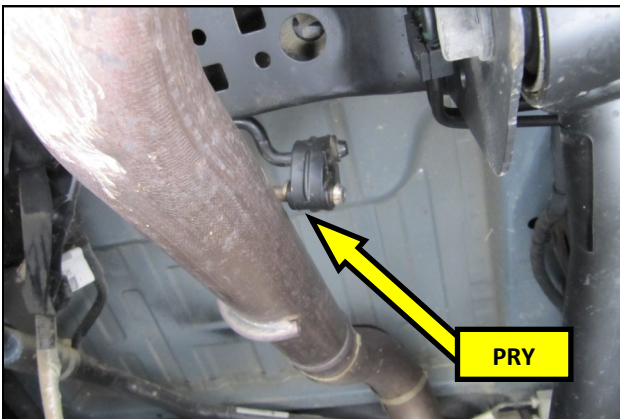
NOTE- Installation of this Exhaust System onto a 2 Door vehicle will require cutting of the B pipe. In addition to common hand tools, this installation requires the use of a Sawzall® or equivalent.



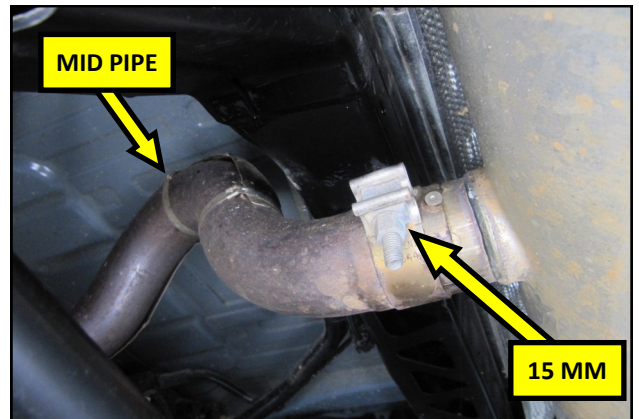
1. Using a 15 mm wrench, remove the two nuts at the exhaust flange and set them aside. Retain the hardware for future use.



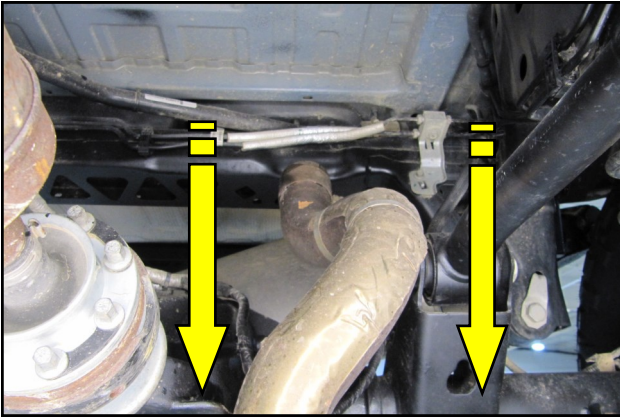
2. Separate the hanger bracket from the frame mounted isolator.



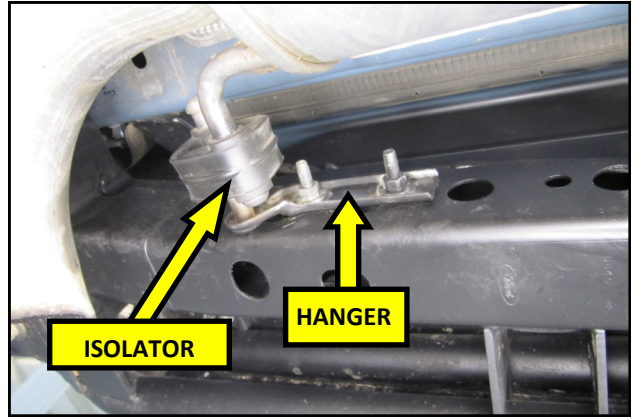
3. Pry the rubber isolator off of the hanger on the mid pipe.



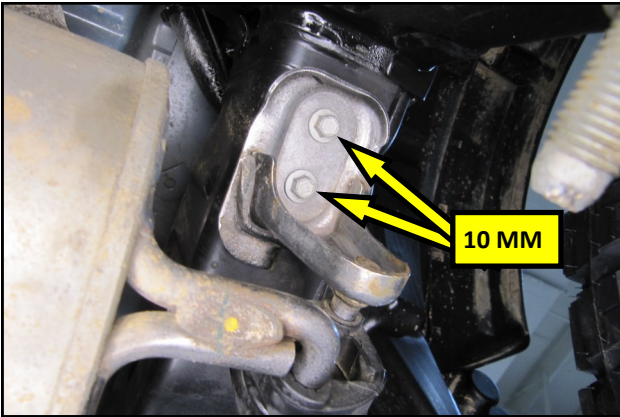
4. Using a 15 mm socket, loosen the clamp at the muffler inlet.



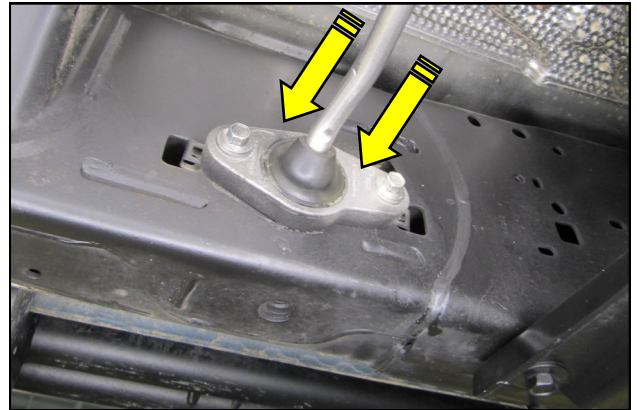
5. Pull the mid pipe out of the muffler and remove it from the vehicle. Do not remove the gasket from the flange in step 1. It is to be reused.



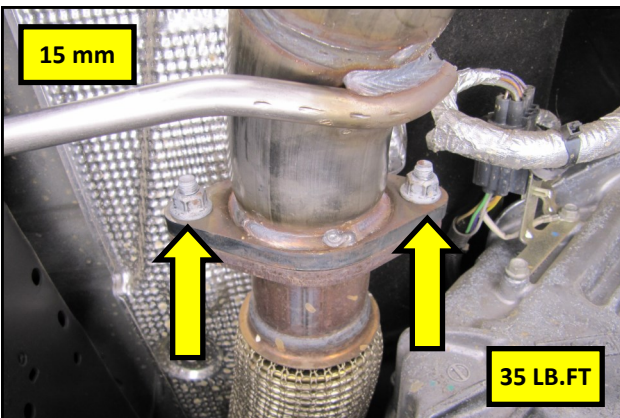
6. Pry the passenger side rubber isolator off of the frame mounted muffler hanger.



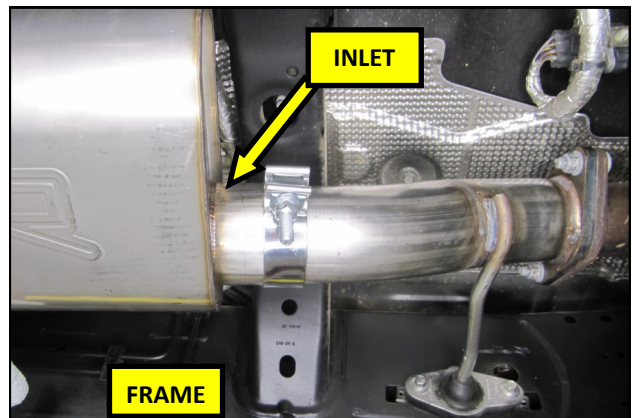
7. Using a 10 mm socket, remove the two bolts securing the driver side muffler hanger to the frame. With the help of an assistant, remove the muffler and hanger from the vehicle.



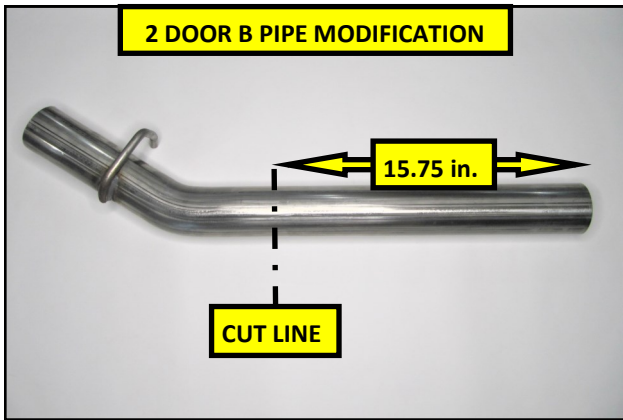
8. Insert the RTR Exhaust hanger on the A Pipe into the frame mounted isolator from step 2.



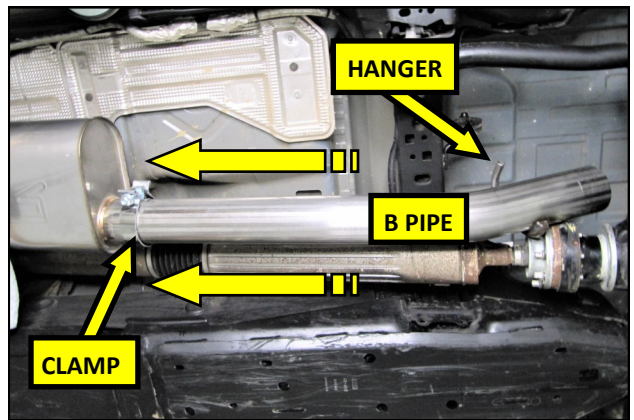
9. Slide the RTR A Pipe flange over the studs and secure it using the OEM hardware from step 1. Torque the nuts to 35 lb.ft



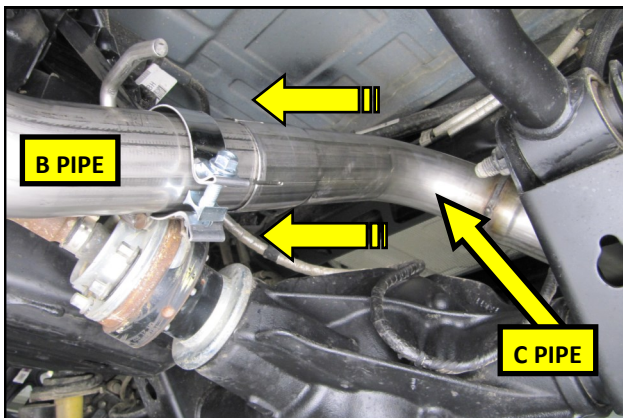
10. Slide the RTR Muffler with one of the supplied Clamps onto the A Pipe as shown. When properly installed, the Muffler inlet will be closest to the frame.



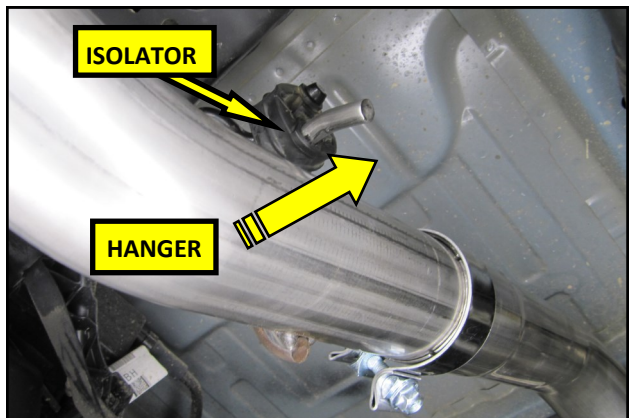
11. If installing the RTR Exhaust onto a two door vehicle, remove 15.75 in. of tube from the straight section of the B Pipe.



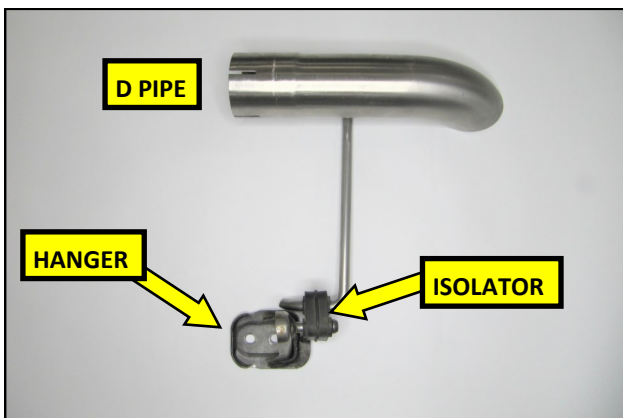
12. Slide the B Pipe and one clamp into the Muffler outlet as shown, with the hanger in the 12 O'clock position.



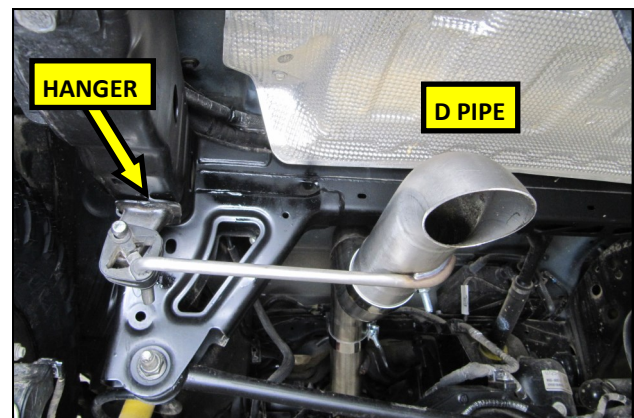
13. Slide the C Pipe and one Clamp over the axle and onto the B Pipe as shown.



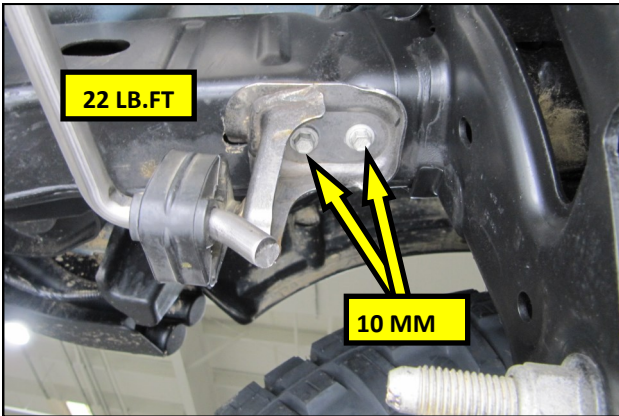
14. Insert the B Pipe hanger into the rubber isolator as shown. **HINT:** Use of a silicone spray lube on the isolators will ease installation of the hangers.



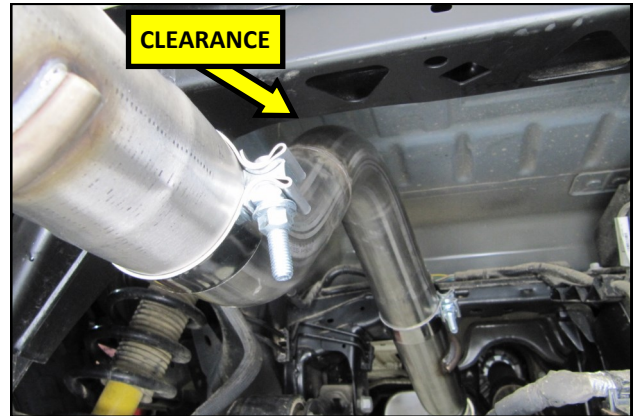
15. Transfer the OEM hanger and isolator from step 7. onto the RTR D Pipe as shown.



16. Slide the D Pipe and the last Clamp onto the C Pipe. Position the D pipe so that the OEM Hanger mates to the frame.



17. Secure the hanger to the frame using the OEM hardware removed in step 7. Torque the bolts to 22 lb.ft



18. Adjust the Exhaust into its final position and where the most clearance can be gained under the crossmember. Tighten all 4 of the exhaust Clamps to 45 lb.ft. Retorque all 4 Exhaust Clamps following a thorough heat cycle.