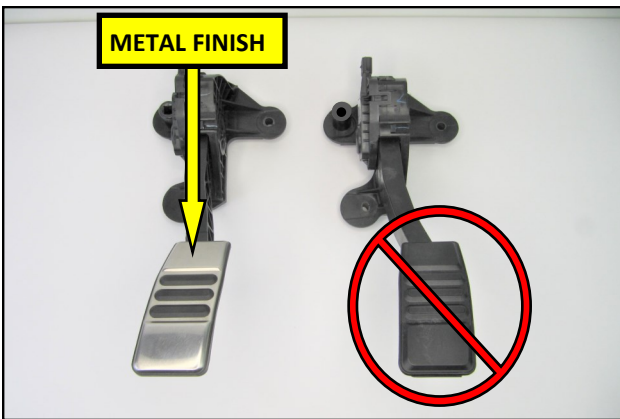
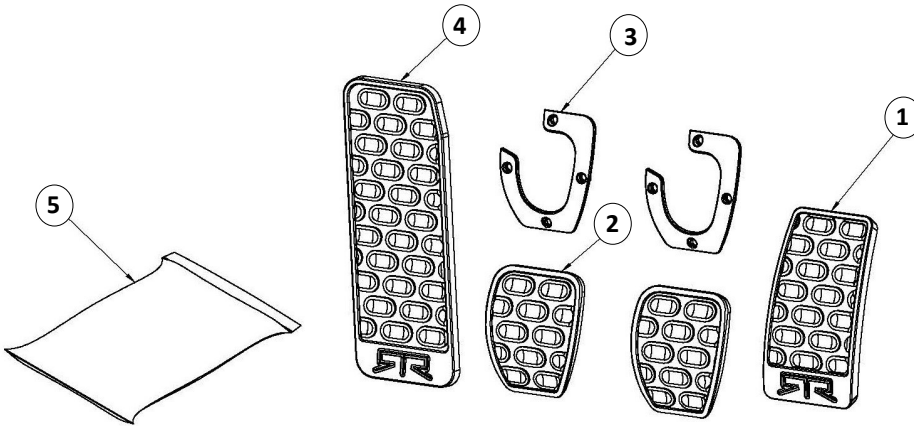




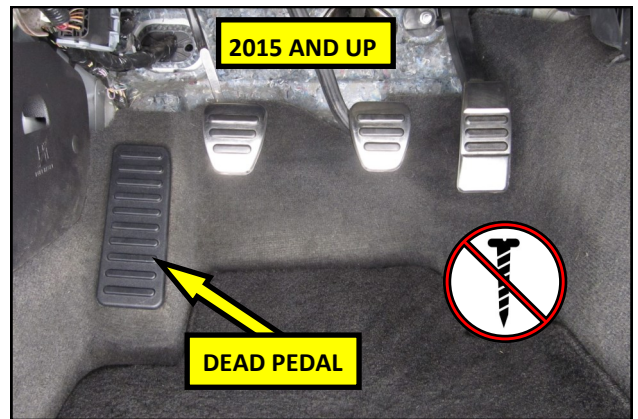
**2011-23 Ford Mustang
RTR Pedal Cover Kit
Manual Transmission
Part Number 11031.0001.32.A
Component Identification**

- | | | |
|----|-------------------------------|---|
| 1. | Accelerator Pedal Cover | 1 |
| 2. | Brake and Clutch Pedal Cover | 2 |
| 3. | Cover Retainer | 2 |
| 4. | Dead Pedal | 1 |
| 5. | Hardware and Instruction Card | 1 |

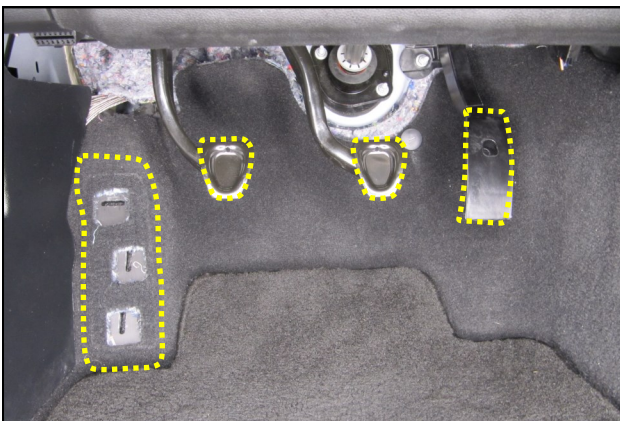
NOTE: Dead Pedal is not used on 2011-2014 model year vehicles.



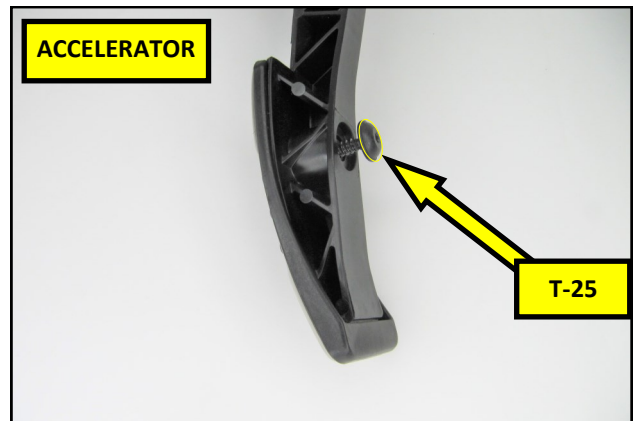
NOTE: The RTR Pedal kit is intended to be installed on vehicles equipped with the optional Accelerator Pedal with Metal Finish. New pedal assemblies can be special ordered from your local Ford Dealer if needed.



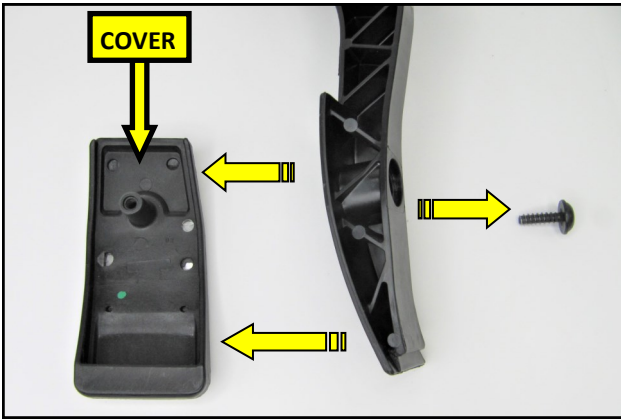
1. Dead Pedal-2015 and newer models. Locate and remove the dead pedal by prying it up and off of the floor of the vehicle. Inspect the 3 mounting slots in the floor for any retention clips that may have remained in the vehicle. Remove any clips that remain in the vehicle.



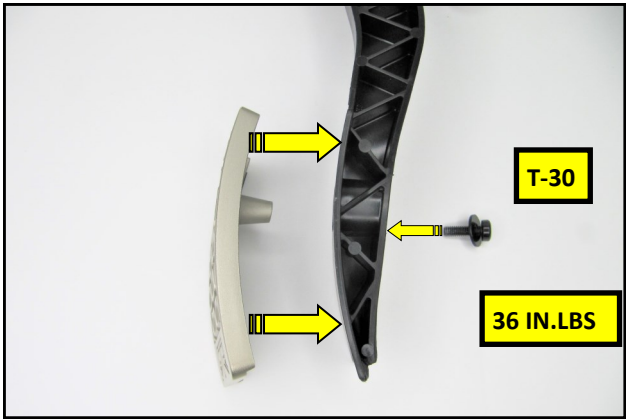
NOTE: The pedal assemblies in this instruction have been removed from the vehicle solely for illustrative purposes. The RTR Pedal covers are intended to be installed inside the vehicle.



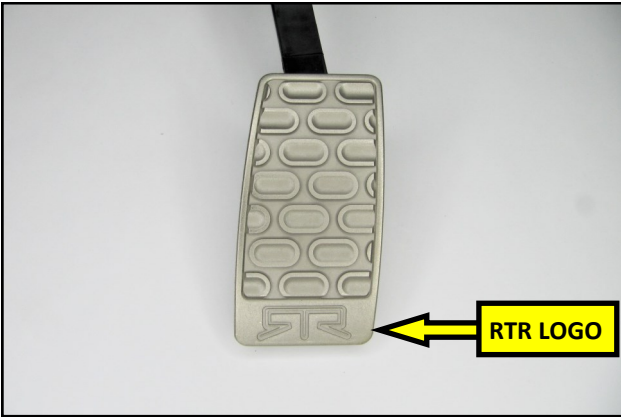
2. Accelerator Pedal- Using a T-25 Torx® driver, remove the screw from behind the pedal.



3. Remove the cover and screw from the pedal arm and set them aside. The OEM screw will not be reused with the RTR cover.



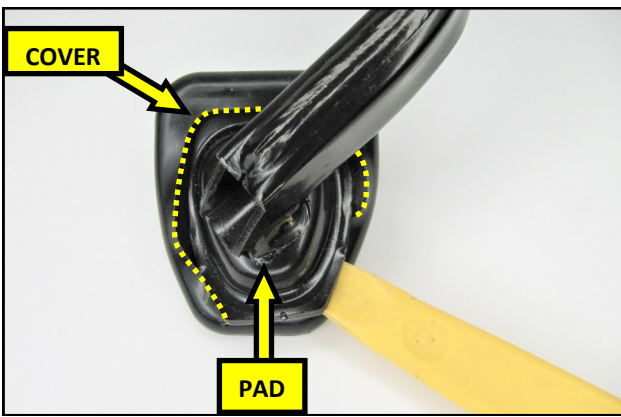
4. Using a T-30 Torx® driver, secure the RTR cover to the pedal arm using the supplied M6 Pan Head Screw and Washer. Torque the Screw to 36 in-lbs.



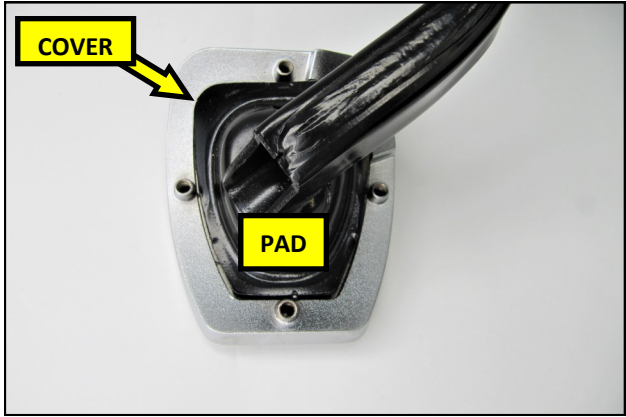
5. Forward facing view of a properly installed RTR Accelerator Pedal Cover.



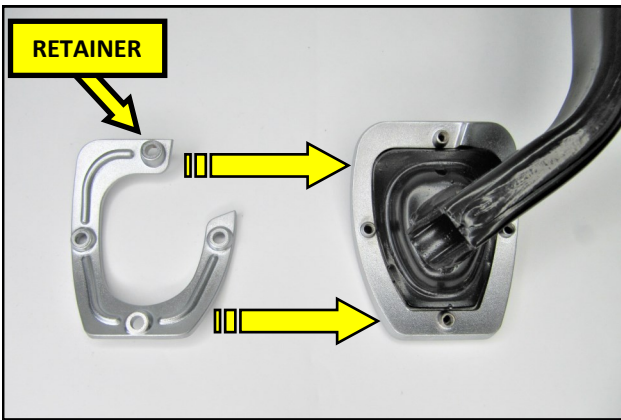
6. Brake and Clutch Pedal— The OEM pedal covers have no mechanical fasteners securing them to the pad on the arm. It is a non-bonded urethane cover with optional aluminum cladding.



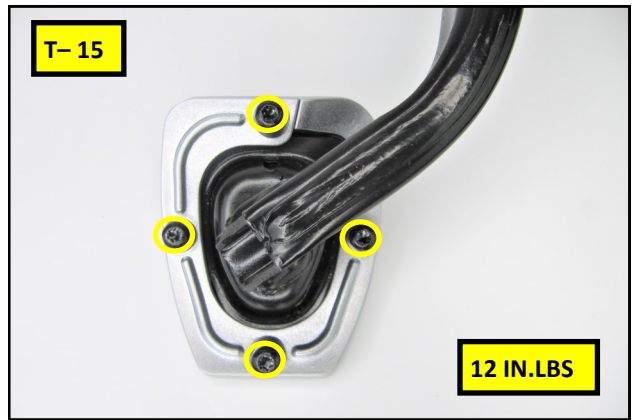
7. Using a trim panel removal tool, pry the pedal cover off of the pad and set it aside.



8. Place the RTR Cover onto the pedal pad as shown.



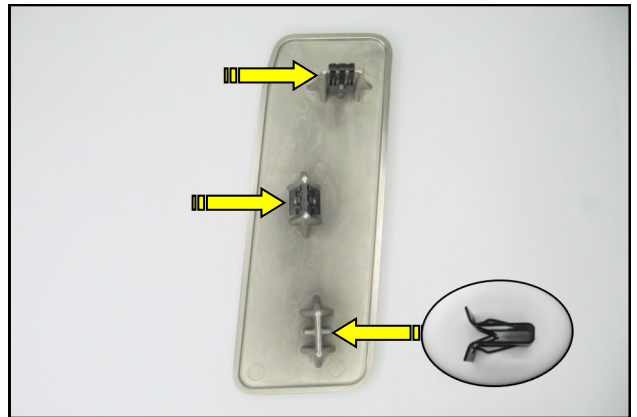
9. Slide the Cover Retainer onto the RTR Cover.



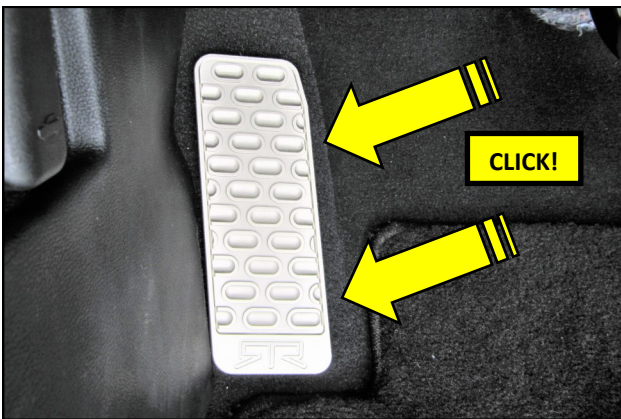
10. Using supplied M4 screws and a T-15 Torx® driver secure the Retainer to the Cover. Torque the screws to 12 In. lbs.



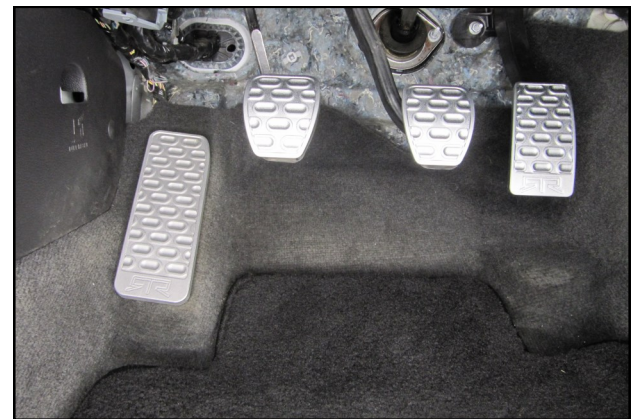
11. Forward facing view of a properly installed RTR Pedal Cover. Repeat steps 7-10 on the third pedal.



12. Dead Pedal-2015 and newer models. Push the 3 supplied Retention Clips onto the rectangular studs on Deal Pedal as shown.



13. 2015 and newer models. Align the Rectangular Studs with the slots in the vehicle floor and snap the Dead Pedal in. Check for positive engagement by gently



CARE- Clean the RTR Pedal Covers using a mild solution of soap and water. Avoid all caustic automotive cleaners with a PH of 12 or higher.

THIS PAGE HAS INTENTIONALLY BEEN LEFT BLANK