



Texa Motorcycle – set up and Install – PLEASE READ!

If your PC has a DVD reader – use the dvd to install the software. Read the points below, then start from page 4.

If you do not have a DVD reader, follow the download instructions below – see page 2.

Important notes BEFORE you begin:-

- 1 You will not be able to perform any software downloads until you have received your delivery with the green usb license key.
- 2 **Please** install Team Viewer so we may assist remotely with technical assistance and training. www.teamviewer.com - Free version for personal use.
- 3 Turn off/disable Microsoft One Drive for the entirety of this process.
- 4 **ENSURE ANTIVIRUS/SECURITY SYSTEMS ARE OFF FOR THE DURATION OF THE INSTALL AND ANY REQUIRED REBOOTS.**
- 5 **ENSURE ALL WINDOWS UPDATES ARE COMPLETE PRIOR TO INSTALL.**
- 6 The green usb license key must be inserted to a USB A slot on the PC when installing AND using the software.

Information below will assist with easy set up and installation. **Following** these instructions will allow a trouble-free installation.

We recommend copying this document to your computer for easy access if needed in the future.

When you receive your delivery, included in the case for the unit is your green USB license key. DO NOT lose this. It must be in the pc whenever you use the program.

Please ensure you view and/or print the [basic demo instructions](#), and [cable selection instructions](#). This will give you an introduction to using the basic functions of the software.

Once you have had a few days to familiarize yourself with the basics, we recommend arranging a remote training session to offer some further basic training over the internet using team viewer remote software. Contact us to arrange a suitable day and time and we will email details of the screen sharing software.

You may also wish to subscribe you our [youtube channel](#) and [facebook](#) pages.



If you have not yet completed the mytexa registration -please do so BEFORE proceeding.

Please call 0405 548757 to request your registration email again if the link has expired.

Page 2 - Download manager instructions. If you do not have a dvd reader, you will need to download the software. PLEASE USE MICROSOFT EDGE INTERNET BROWSER.

Prior to any download or install, **PLEASE ENSURE YOUR COMPUTER HAS COMPLETED ALL WINDOWS UPDATES AND RE BOOTED PRIOR TO INSTALLING THE IDC5 SOFTWARE.**

Please ensure you do not have any free bundled antivirus running during installation, particularly Norton/Kaspersky/McAfee/Trend Micro. If this is not followed, you WILL encounter problems with installation. If you do not know how to deactivate the antivirus, please contact your IT manager.

Register at MYTEXA.com using the email that was sent to you. Please check your junk mail. (noreply@texa.com)

Complete the registration process to access the TEXA services

Dear customer, to complete the registration process click on the following link, enter your data and the invitation code indicated below.

[COMPLETE THE REGISTRATION](#)

INVITATION CODE:

Good luck with your work

TEXA

If you did not request to subscribe to the TEXA services, ignore this email.

This message was sent from an electronic mail address that is not verified. Do not respond to the message.



TEXA myTEXA Language Stephen Norton Logout

MY EQUIPMENT TEXA APP DOWNLOAD MANAGER PROFILE MANAGEMENT

New profile page: here you can edit and confirm your personal data and workshop data! [Click here to access.](#)

PURCHASED EQUIPMENT

Please keep a note of the log in email address and password!

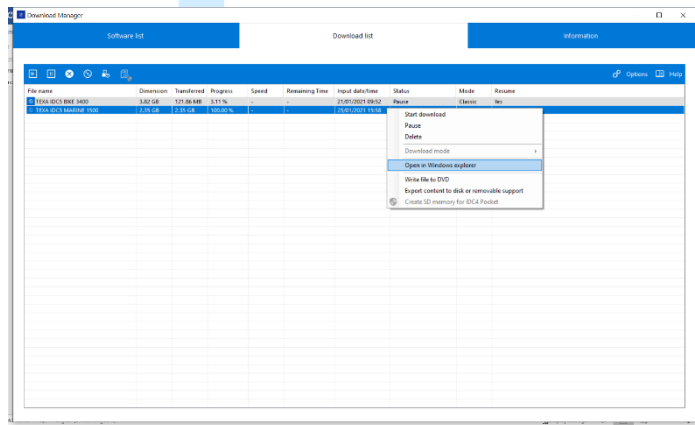
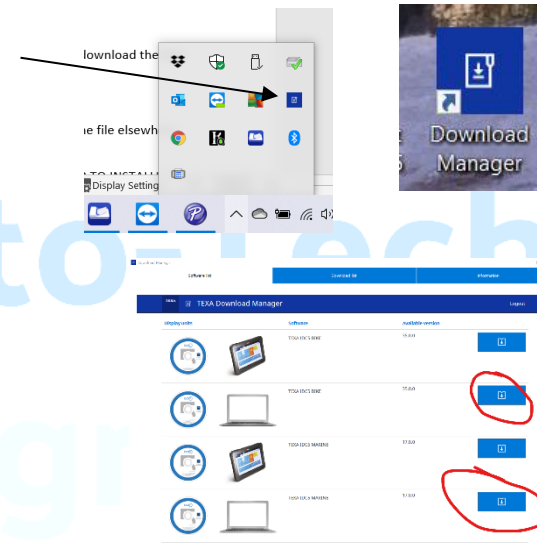
Once you have completed registration, click on Download manager and follow the prompts. This allows you to download the main diagnostic software for installation.



Once Download Manager is installed, open this program using the icon on your desktop.
or
The program may already be open after installation, so please also check your task bar for the icon.

Log in to the program using your MYTEXA log in credentials: - Download your software.

You should have only 1 option for PC software

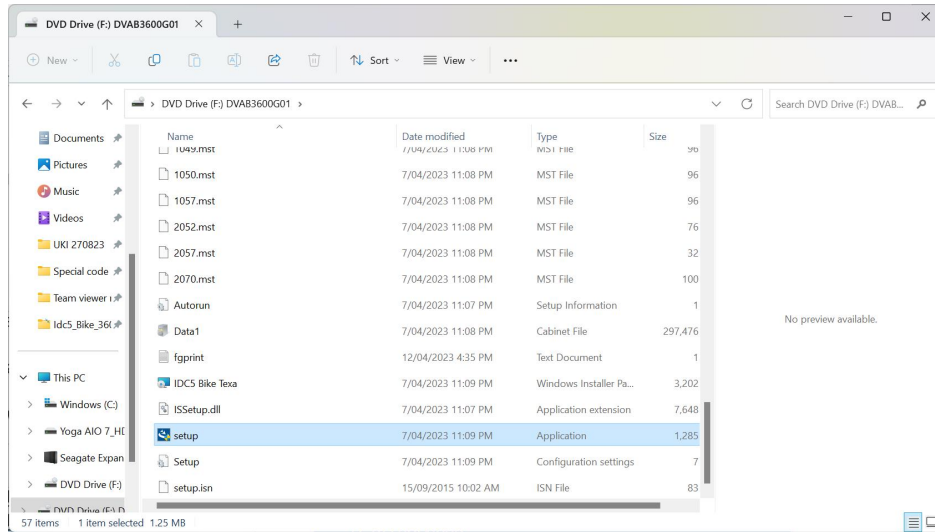
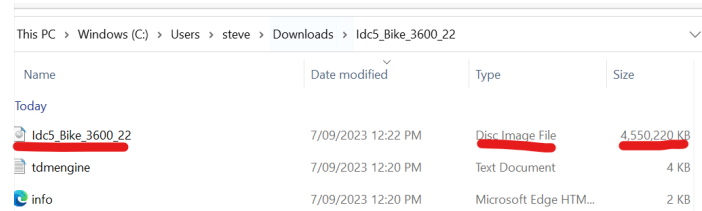


If the download progress appears to be stuck, please recheck for windows updates, install if required, re boot pc and re open the download manager program.
Installed antivirus may also affect the download. (windows defender causes no issues)

When download has completed, highlight the software file that you have just downloaded, right click on your mouse and select "open in windows explorer"



Double click on the disc image file (it will be the largest file).

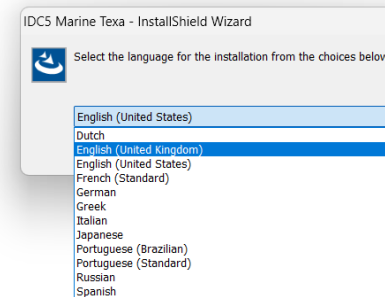


Double click the setup application file

Your computer may need to reboot during the process. You may then need to re initialise the installation

Double click the setup .exe file, your installation will commence, follow the instructions given.

When given language option to install, select English UK



Insert your usb license key when asked.



Once installed, you will then need to set up your TXB bluetooth connection. See Page 5



Page 5 - Setting up TXB – pairing of your tool to your pc via Bluetooth/usb.

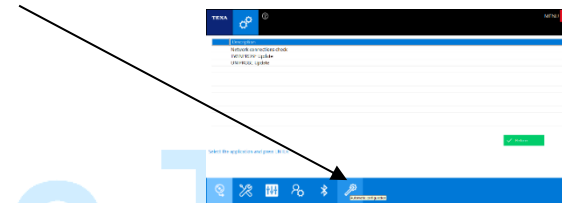
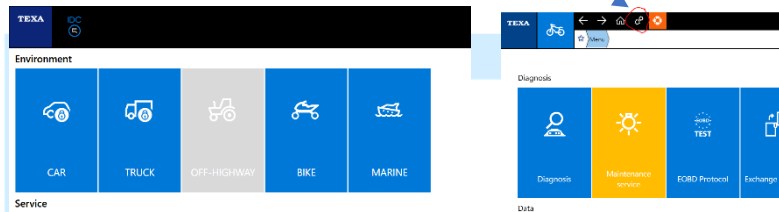
			<p>You will also need:-</p> <div style="display: flex; justify-content: space-around;"> <div data-bbox="1227 459 1384 576"> <p>3151/AP05 Cable</p> </div> <div data-bbox="1525 443 1644 549"> <p>3151/AP76 Cable A connector for 2T B connector for 4T</p> </div> </div> <p>Beta Motorcycle with fully charged battery OptiMate Pro 1 Duo Power supply /charger connected.</p> 
TXB Evolution	USB HASP Key	SOFTWARE DVD or download.	Diagnostic cables and motorcycle with GOOD 12.5+V battery

- 1 Open your software with green usb inserted to your pc.



2 Navigate to the configuration screen:-

Click on Bike button, then click on the gears icon at the top of the next page, then click on the wand icon to enter the configuration page. If the bike button has a padlock showing, click on the bike button to proceed.

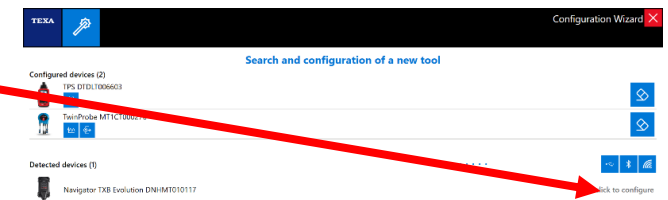
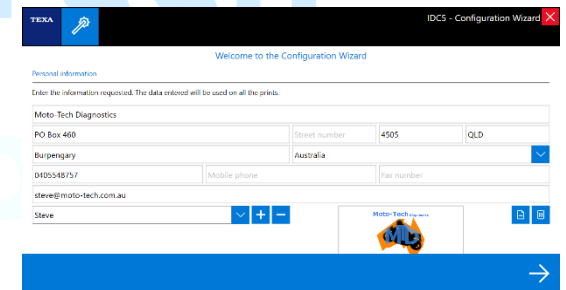


4 Fill out your details and add your logo if you would like this to be shown on printed reports.

5 Connect your TXB to a bike using the required diagnostic cables. If using Bluetooth, ensure this is switched on in your computer, if using USB, connect the supplied usb cable to your pc and TXB. NOTE - the TXB is NOT powered by USB – you must-have a 12V battery supply.

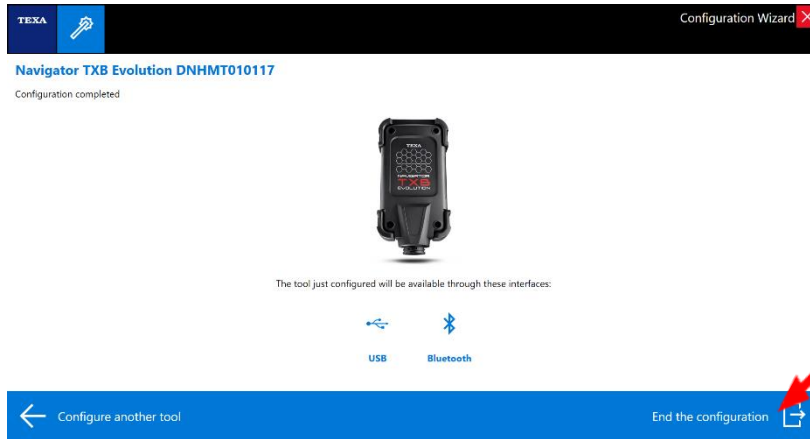
We recommend using Bluetooth. Then click on the arrow at the bottom right of the page.

6 The software will automatically search for your TXB. Once found, press “click to configure”



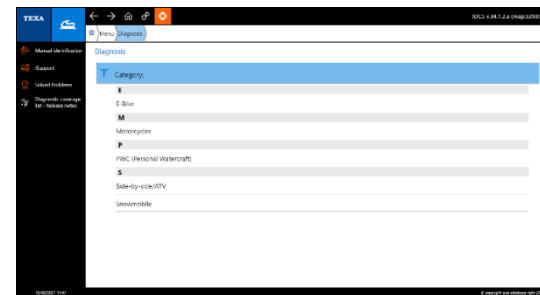


- 7 If Bluetooth is active on your pc, once the Bluetooth symbol turns blue, click on End the configuration. You do not need to have the usb cable connected at this point if using Bluetooth unless asked to for registration.



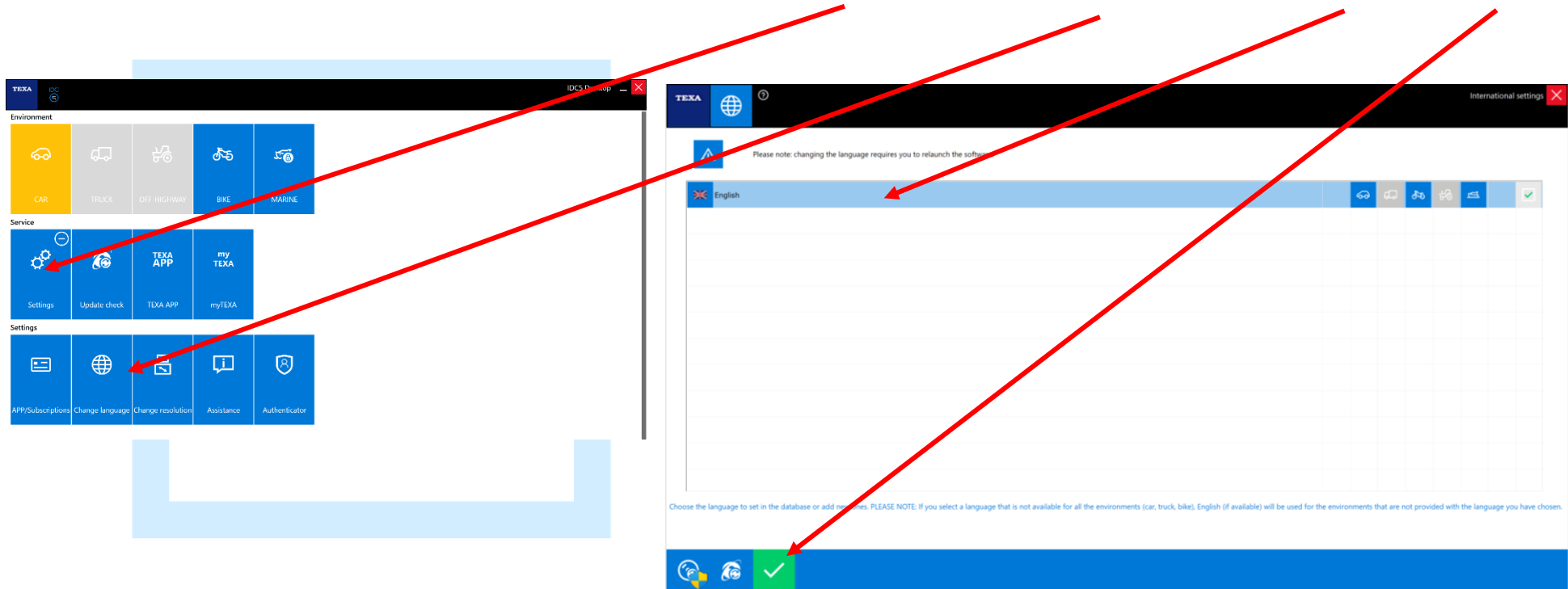
Moto-Tech
Diagnostics

Set up should now be complete, on the next screen click on the red X button to get back to the home screen.





8 If you see an error for language, you have installed English US. Click on the settings tab, click on change language tab, highlight English, then press green tick.

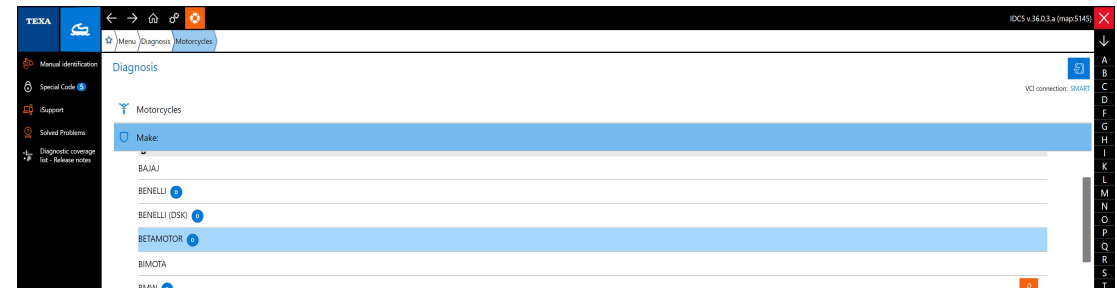
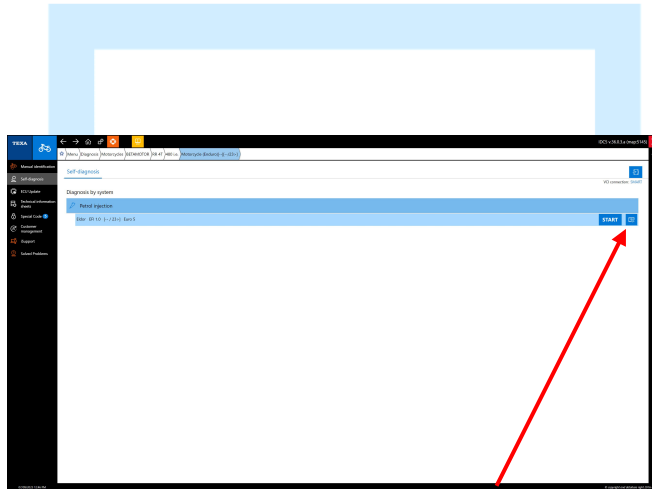




Basic demo guide for Texa IDC5 PLUS software

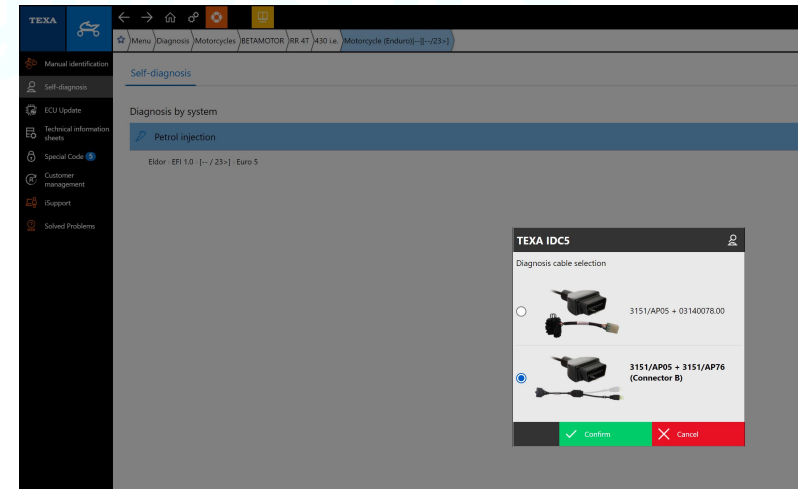
This document is to show a brief overview of the basics of the IDC5 Bike software. We also have many videos on our [You Tube channel](#)

- 1 Select category, make, model, engine type and year:-



- 2 Once you have completed your selection, the program shows which systems are available. Select “petrol injection”

- 3 Click on the button to the right of the Start button, to see which cable is needed. The battery should be at 12.5V or more for reliable communication. Best practice is to use the OptiMate Pro 1 Duo supplied with your kit. Click Next.

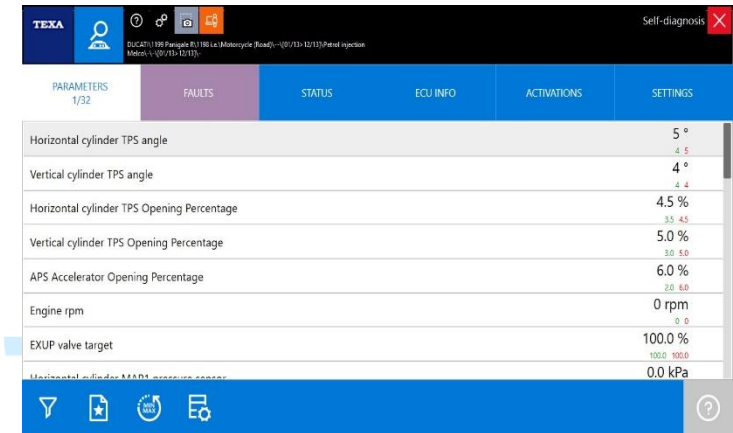
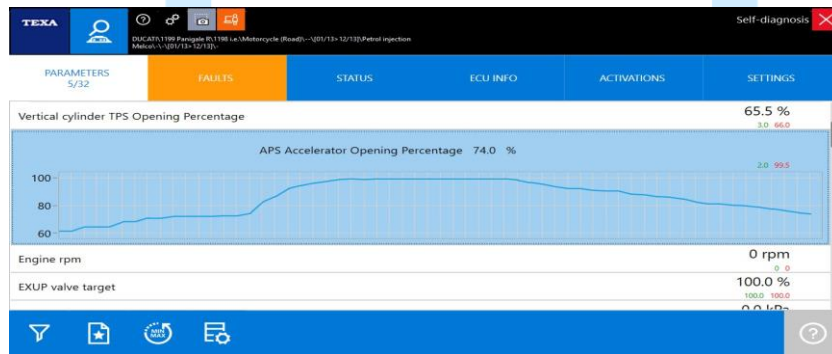




The software will always default to the FAULTS tab when connecting to a system.

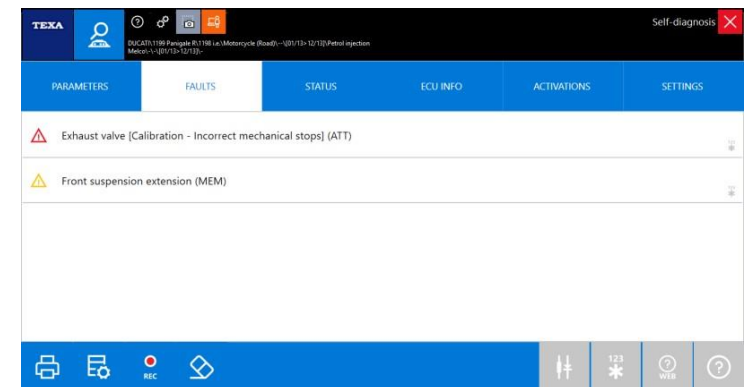
4 PARAMETERS Click on “parameters” tab

Depending on parameters available from the ecu (varies with model and brand) you can double click on any of the data lines ie rpm, to view a graphical display.



5 ERRORS Click on the faults tab so see current and past error codes

The control unit stores these errors in a permanent memory. The user, in this way, can verify if the fault occurs occasionally (only under specific conditions) or if it always occurs. Once the error is reported, the program will provide information on the type of fault.





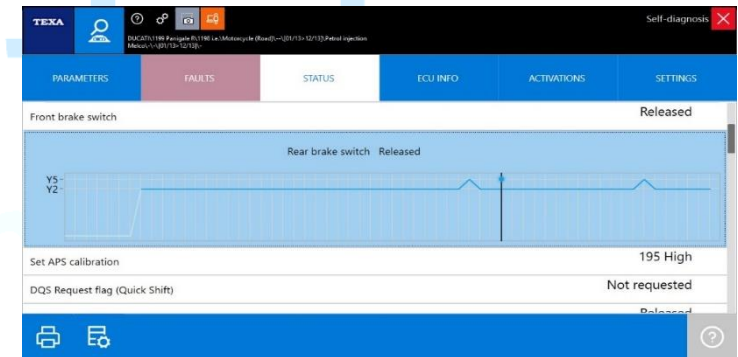
The errors can be highlighted in three different ways:

- **Current mode "ATT"**: *it displays an error occurring upon connecting, therefore not stored in the control unit, but occurring at the moment.*
- **Memory mode "MEM"**: *it displays an error stored in the control unit, but not occurring anymore at the moment.*
- **History mode "STO"**: *allows you to save the fault that was previously erased from the control unit, with the function "ERASE ERRORS" in the TEXA tool's memory.*

If later re-diagnosed and the memory bank does not contain any more errors, it means that the malfunctioning has been eliminated.

6 STATUS

This function enables you to evaluate the **STATUS** or the condition of some inputs or outputs of the control unit.

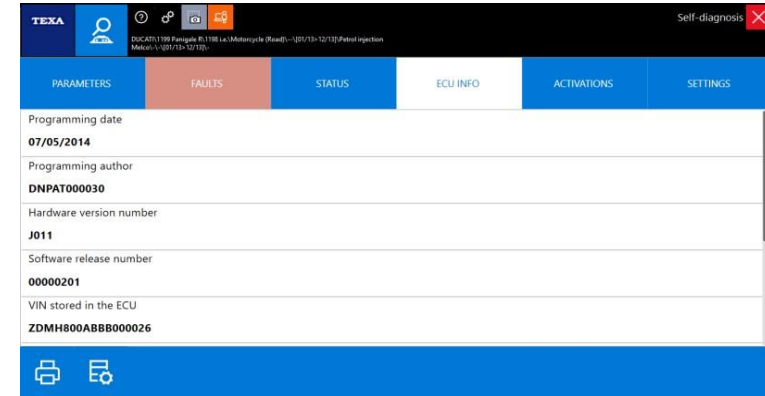


This information can only be statuses and conditions that have been pre established, generally with an indication of the type: ON/OFF (for ex. Engine running/not running, lambda probe ON/OFF etc.) The graphical functions allow you to view the status of all the various devices managed by the control unit at the same time.

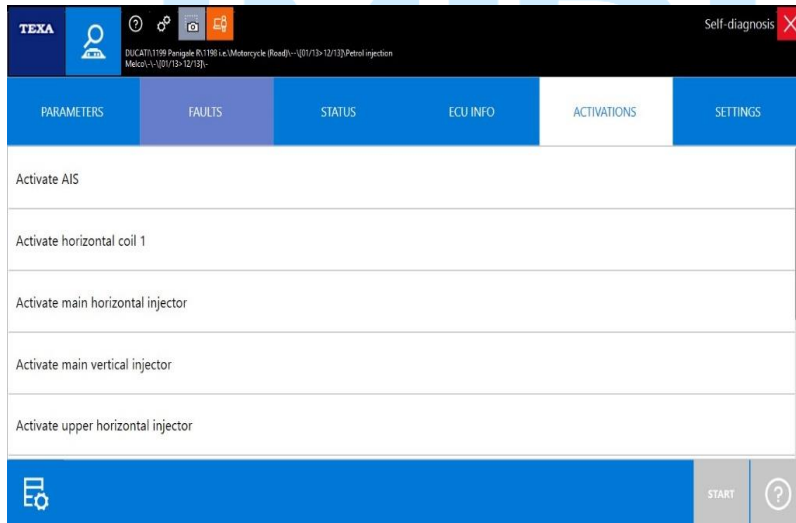


7 ECU INFO

This function enables you to view the information about the connected control unit in such a way that it will allow you to determine an accurate identification of it.



8 ACTIVATIONS



This function allows you to test the devices controlled by the ECU (actuators) by temporarily activating them. This will allow you to verify if they are working properly.

The temporary activation enables you to check both the performance of the actuator and that of the ECU control line.

The activation methods used by the electronic system being tested (control unit) may differ depending on the manufacturer.

In some systems the duration of the test can be decided by the operator whereas in others the duration and sequence of the tests are set by the program available within the control unit.



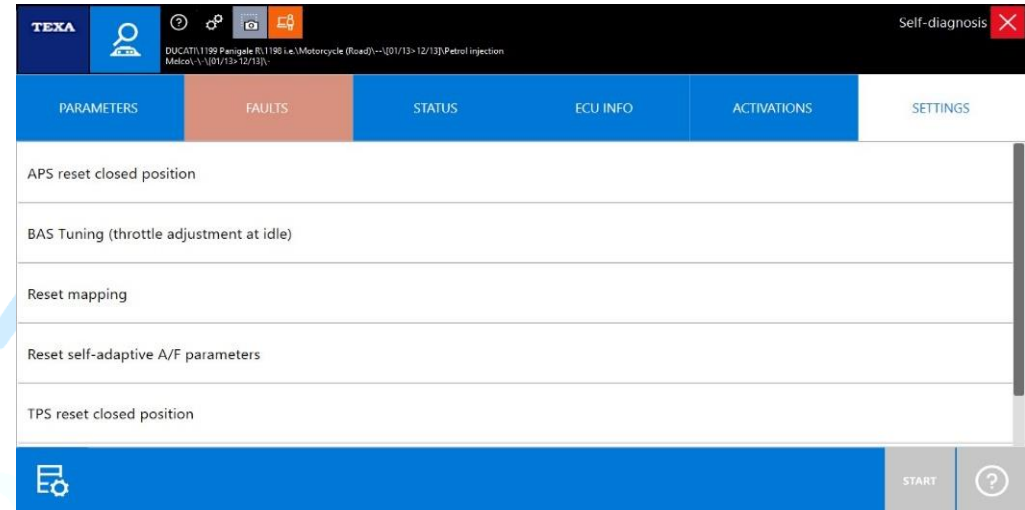
9 **SETTINGS/ADJUSTMENTS** This function enables you to access the adjustment functions supported by the control unit being tested.

These adjustments (Adaptive value resets, TPS reset, ISV resets etc.) can only be done with the help of a system connected to the diagnosis socket of the control unit.

The adjustment procedure is generally made up of three stages:

1. Entering the "adjustment" function;
2. changing the default parameters; 3. storing the new adjustment.

This rule may vary depending on the type of adjustment or depending on the procedure set by the manufacturer. When necessary, go to the main page and click on Help Self-diagnosis. Here you will find a special sheet describing all the details on how the tool works.

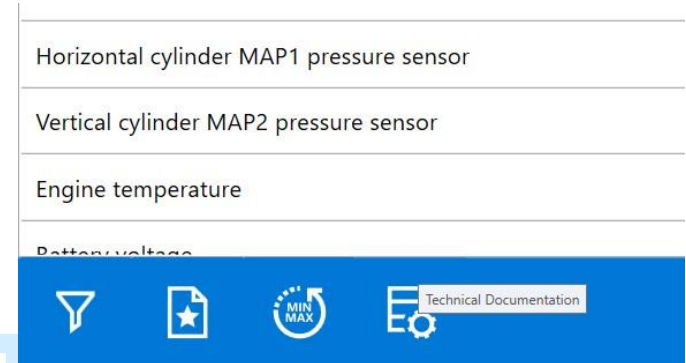




10 WIRING DIAGRAMS

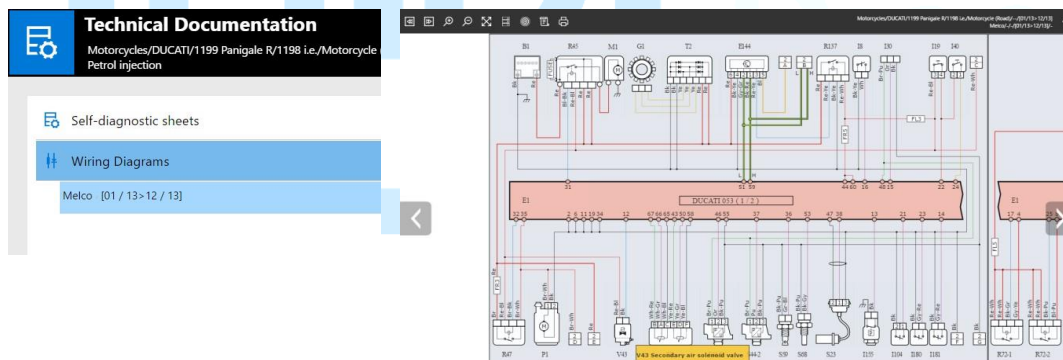
TEXA manufactures standard wiring diagrams related to each system for all the electronic systems used on the vehicle.

Wiring diagrams can be accessed via the main model selection screen, or while “in diagnosis” by clicking on the technical documentation button.



Click on the icon **WIRING DIAGRAM**.

Be sure to select the correct year to access the correct diagram for the model you are working with.

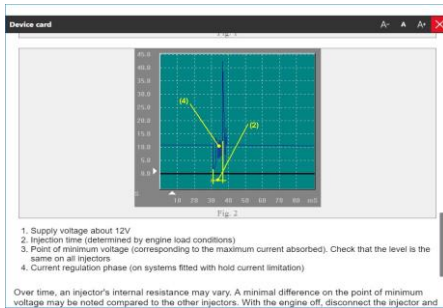
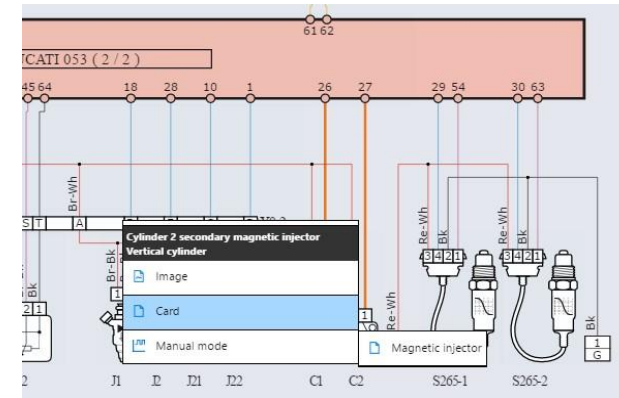




Click on a component on the diagram.

This window lists the following items:

- **Card:** to call up the documents related to the selected devices. Often described the component operation, test procedures and example oscilloscope trace values.



Moto-Tech

11 Nominal Values

Many models have nominal values listed allowing you information required to test possible faulty components.

Card

With the diagnostic tool, clear the errors in the engine management control unit. Start the engine and turn it off after 10 seconds. Then, verify if the error is present. If the error is still present, proceed with the checks.

Carry out the following tests on the component's pins

Table 1

Test conditions	Probes	Test values	Result	Cause
1 Component disconnected, Key in "OFF" position	Bk-WH (+) Ye (-)	11 – 13 Ω (20-30°C / 68-89°F)	Correct value	See table 2
2 Component disconnected, Key in "OFF" position	Bk-WH (+) Ye (-)	11 – 13 Ω (20-30°C / 68-89°F)	Value out of range	Faulty cylinder 1 secondary magnetic injector

Carry out the following tests on the component's pins

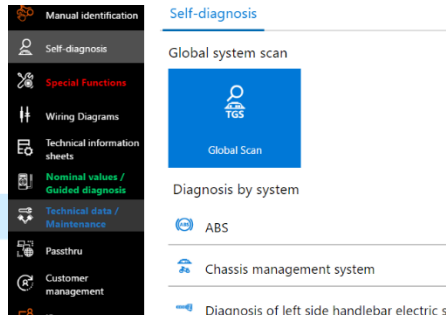
Table 2

Test conditions	Probes	Test values	Result	Cause
1 Component disconnected, Key	Ye (+) Ground	Continuity	Present	Faulty cylinder 1 secondary



Service data (introduced V33)

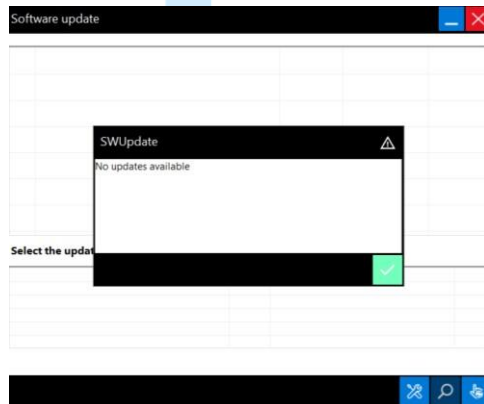
New information currently being added and expanded with every version.



Title	Specifications
Engine displacement	1203 cc (73.4 in ³)
Number of cylinders	2
Type of engine oil	H-D 360 SAE 20W-50 Synthetic H-D 360 SAE 50 alternative viscosity for ambient temperatures above 10°C / 50°F H-D 360 SAE 60 alternative viscosity for ambient temperatures above 21°C / 80°F
Oil quantity	2.65L (2.8 US qt.) with oil filter replacement
Spark plug	HD 6R12 (1.0 - 1.09 mm / 0.038 - 0.043 in)
Compression ratio	10 : 1
Cylinder head screw tightening	First tightening: 16 - 19 Nm (13 - 15 ft. lb.)
	Loosen all the screws
	Second tightening: 9 - 12 Nm (7 - 9 ft. lb.)
	Third tightening: 19 Nm (14 ft. lb.)
Alternator's charge	Engine speed 3600 RPM: 32A
Fuel pressure	Engine started: 3.8 - 4.2 bar (55 - 62 psi)

Other main features: -

Software Updates – Annual subscriptions: -



Software updates are provided via annual subscription. If you do not have a subscription, you will not receive updates.

Updates are not only for new models, they also include added data, wiring diagrams, features/functions, tech data, settings and activations.



TECHNICAL BULLETINS – Annual subscription

The functions of this area allow you to access the information used as informative support for IDC5 software.

The **TECHNICAL BULLETINS** refer to problems related to the selected system, and are available at different times.

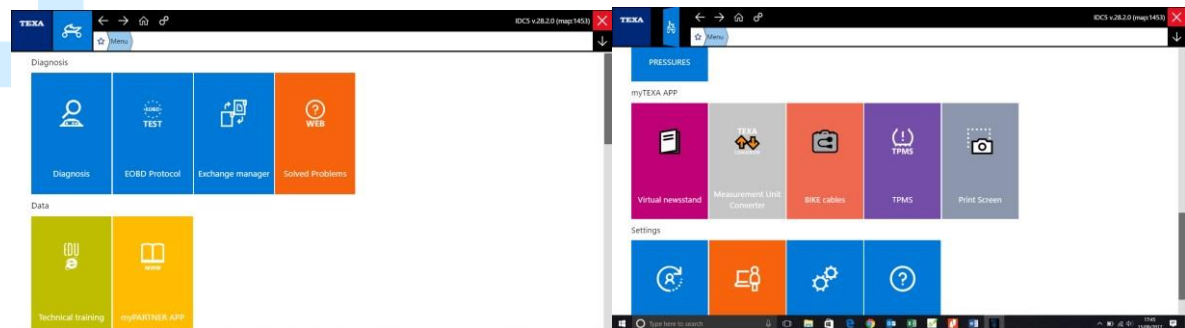
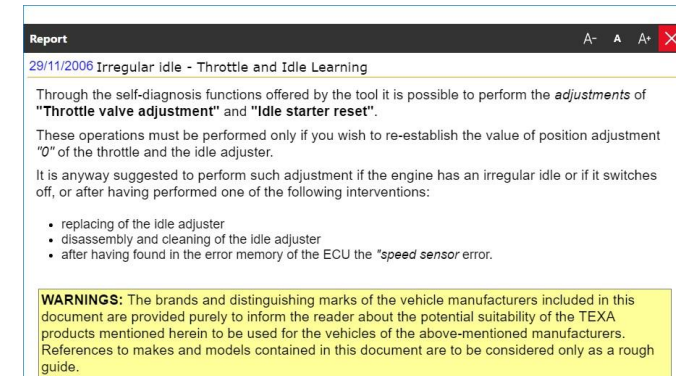
If this information is available a flashing icon will appear in the upper area of the display.

Such information is specific to the selection level. There are specific bulletins, according to MAKE, MODEL etc.

Cable selection App Instructions – shows cable selection instructions as well as how to use the APP within the software to use as a log of which cables you have purchased.

The app is accessible via the software, listing cables by connection or model. We generally will aim to have this activated prior to despatch, however if not, you can install this app via the software.

To install and use this app, from the home screen, scroll down to the Apps section.

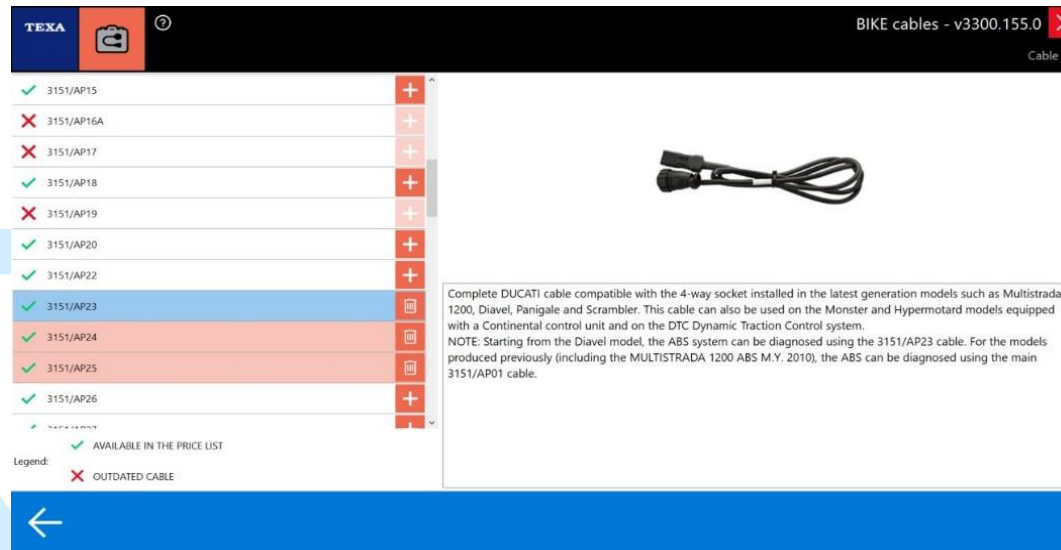


Click on Bike/Marine cables App and follow the instructions to install.

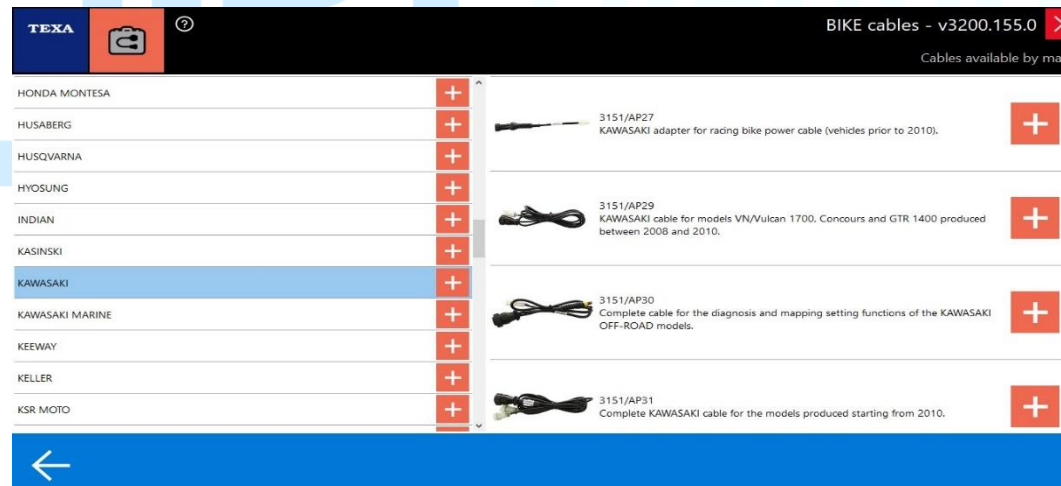


Within the app you can list cables by brand or choose by cable part number to see which models that cable suits.

Press the + button to add the cable to your list which can be used to keep track of cables you have previously ordered or use it as a wish list, whichever suits your needs.



You can also view cables by brand.





To view your cable list, click on the icon at the bottom right of the main cables catalogue page.



Moto-Tech

You can view the list and print it if you wish to keep a record with your cable storage.



Cable 3151/AP08	
Cable 3151/AP54	
Cable ADAPTER BMW G 450 X (K16)	
Cable 3151/AP01	
Cable 3151/AP02	
Cable 3151/AP03	
Cable 3151/AP06	
Cable 3151/AP07	
Cable 3151/AP25	
Cable 3151/AP24	
Cable 3151/AP23	





Cables can be ordered online via our web site:-

Motorcycle:- <https://www.moto-tech.com.au/texa-motorcycle-cables/>

Marine:- <https://www.moto-tech.com.au/collections/texa-marine-cables>

Many documents and manuals to our web site for easy access. You can download and save these direct to your pc.

<https://www.moto-tech.com.au/pages/texa-documents>

Any cables required in the future can be purchased online direct from the web site. An automatic discount is applied and there are no merchant charges for online orders. (as at April 2022)

<https://www.moto-tech.com.au/collections/texa-marine-cables>

Bookmark that page for easy access.

Manual orders taken by phone do not receive the discount and are subject to merchant fees if paying by card.

