

Installing your ROOF CAT

Your **Roof Cat** can be installed anywhere in your ceiling. Choose an area where you can easily see the catch indicator - your roof access hatch, internal garage ceiling or outside in your roof soffit are all ideal places to install **Roof Cat**. Check that the roof space is clear of timber, plumbing or electrical wires. Simply follow install instructions, bait and set - **Roof Cat** will do the rest!

1

ACCESS HATCH INSTALL

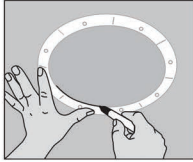
Take down the hatch from your ceiling and place it on two saw stools ready for cutting

OR

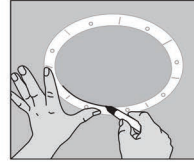
CEILING INSTALL

Assemble necessary tools and set up a ladder below where you want to put the **Roof Cat**.

2



Take the clear plastic retaining washer supplied and place it in the position where you will be cutting. Using it as a template trace around the inside ring to mark your cut line.



Take the clear plastic retaining washer supplied and place it in the position where you will be cutting. Using it as a template trace around the inside ring to mark your cut line.

3

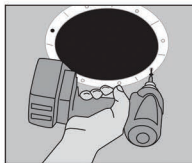
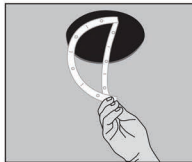
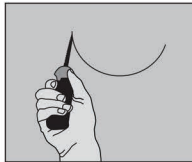
GIB - SOFT MEDIUM

Use a keyhole saw or Gib knife to carefully cut around your marked cut line from Step 2. Tidy up any rough edges using coarse sandpaper.

Fold the retaining washer so it can be inserted into the roof space as shown. Make sure the flat face sits down nicely on the inside surface.

Insert the mounting ring into the hole ensuring the alignment lines on the rim are parallel to a wall.

Screw through all and into a corresponding hole in the retaining washer. Repeat on the opposite side then complete the rest of the screws.



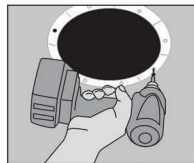
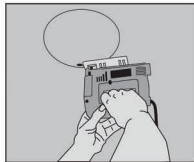
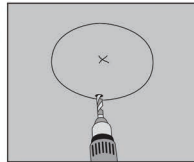
OR

SOLID TIMBER - HARD MEDIUM

Use a drill bit to drill a start hole inside the traced circle. It needs to be large enough so you can insert a jigsaw blade into it.

Place the jig-saw blade into the hole and carefully cut out the circle to your marked cut line from Step 2

Insert the mounting ring into the hole ensuring the alignment lines on the rim are parallel to a wall. Using the fasteners supplied screw the mounting ring up into place.



4



Now it is time to bait and set the trap. See the separate trap setting instruction sheet. Then with the reset lever facing towards you, insert the **Roof Cat** into the cavity and twist to lock it in position. If your ceiling is high, use the standard broom handle attachment as shown.

All done! The red indicator will alert you when your Roof Cat has caught.