

Peter
Kalill

May 24
- June 6



Jim
Holland

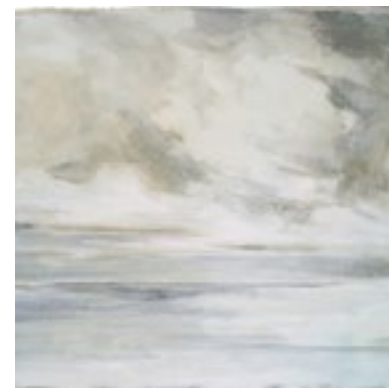
June 28
- July 11



Deborah
Howard

Graceann
Warn

July 19 -
August 1



Ellen
Granter

Fay
Shutzer

Susan
Anthony

August
2 - 15



Peter
Batchelder

Joanne
Williams

August
16 - 29



Shaune
Bazner

August 30
- Sept. 12



Receptions are 6 to 8pm on the first day of each show. Paintings are posted on the web 48 hours prior to each show.

PETER KALILL: DUNES, SURF & SAILS



Peter has spent many winters traveling with his paint box to Mexico, Europe, Canada, New England, and the Southwestern US, exploring local art histories and searching out new, great places to paint.



"Into Spring" 24"x30" oil on linen

May 24 - June 6, 2014 | Meet Peter: Saturday, May 24, 6-8 pm | 25 Commercial Street, Wellfleet

JIM HOLLAND: NEW PAINTINGS



“A beached catboat or light slanting on clapboards and through windows, these are simple forms I find endlessly fascinating in how different light affects the mood.”

- Jim Holland



“Seaside Gambrel” 30”x48” oil on canvas

June 28 - July 11, 2014; | Meet Jim: Saturday, June 28 and July 5, 6-8 pm | 25 Commercial Street, Wellfleet

DEBORAH HOWARD: **ephemeral:**
adj. 1 lasting for only a short time; transitory.



"My paintings have always been about capturing and conveying moments that I experience. My most recent work explores this concept further, as each painting is made up of imagery from these many fleeting moments that in an instant are gone. The

imagery is applied in layers that are buried within each piece and represent time that has passed. These layers are then obscured or sanded away to reveal the history and process of each work. Eventually a final layer emerges to reflect where I am now- home. I grew up on the Cape and after many years away, I have finally returned."

- Deborah Howard



"Moving Forward" 36"x60" oil on canvas attached to panel

GRACEANN WARN: LINES OF POSITION



"Destination Blue" 31" x 72" x 2" mixed media

"Graceann Warn is in love with 'terra incognita', a seeker of an elusive 'there' whose identity can only be glimpsed in fragments: a word, a shape, the barest hint of a phrase whose meaning dissolves the instant you think you've grasped it."

- Leslie Stainton

July 19 - August 1, 2014 | Reception: Saturday, July 19, 6-8 pm | 25 Commercial Street, Wellfleet

SUSAN ANTHONY: COLOR & SHAPE, SEA & SKY



"I love the colors of the Cape-- the blues of sky and sea mirroring each other, the warm gold of a fall salt marsh, the purple branches of a winter meadow. I think I'm drawn to collage because it is about creating images using primarily color and shape. When I'm hard at work on a piece I spend a lot of time searching for just the right color-- I'm trying to capture precisely the deep blue of an August sky or the sharp pale blue of a winter sky or the soft grey blue of sky reflected in wet sand."

- Susan Anthony



ELLEN GRANTER: SHADES OF SUMMER



"Summer's Gold" 24"x44" oil on canvas

"I find inspiration in the things that I want to look at. I am interested in making the most beautiful thing possible, and making it simple."

- Ellen Granter

August 2 - 15.2014 | Meet Ellen: Saturday, August 2, 6-8 pm | 25 Commercial Street, Wellfleet

FAY SHUTZER: PAINTINGS



"In approaching my work this year, I allowed for more exploration of themes, hence pieces in series- a relatively new idea for me. Similarly, invented landscapes with focus on shape and color and a series of figures in neutrals against colorful backgrounds have been part of this process of experimentation. And yet, I always return to my roots, New England landscapes, light on buildings, the comfort of returning home after a long journey."

- Fay Shutzer



"Little Lady" 16"x20" oil on canvas

August 2 - 15.2014 | Meet Fay: Saturday, August 2, 6-8 pm | 25 Commercial Street, Wellfleet

PETER BATCHELDER: REMEMBERED CAPE, IMAGINED COLOR



"The work in this series of Cape Cod scenes attempts to capture the fleeting structures, and changing landscapes of the Cape Cod we all know, love, and wish to preserve. With [Peter's] use of bold, often imagined color, and scenes that are as much about his own memories of the Cape Cod of his childhood, each piece recalls a quieter, simpler Cape, but is portrayed in a way that captures the solitude of a less populated place, while amplifying color in a way that celebrates the Cape's past, rather than lamenting the changes it has seen."

- Peter Batchelder



"Beside the Sound" 20"x20" oil on canvas

August 16 - 29, 2014 | Meet Peter: Saturday, August 16, 6-8 pm | 25 Commercial Street, Wellfleet

JOANNE WILLIAMS: BURIED TREASURES



"The ethereal and stylized cast of the worlds I create act in familiar ways; they row boats, ride horses, touch one another and stand quietly. Yet these activities, far from seeming mundane, guide us as vestiges of mythical experience. My aesthetic, I hope, illuminates a plane of existence visible nowhere else except in the portals of my paintings and collages. It is the summation of a long and intricate process of refinement."

- Joanne Williams

"Buried Treasures" 30"x 30" x 2" mixed media



SHAUNE BAZNER: **WITHOUT BOUNDARIES**



"Without Boundaries" is my untethered exploration on canvas. Too often, we are

limited in life. A recent medical ailment demonstrated life constrained in the physical. Creating this collection was my escape -- my painful everyday reality inspired the theme of horizon line. Looking at a horizon, in our natural environment or on canvas, we think of the infinite possibilities; we think of freedom. I invite you to find solace in these resting places for the eyes and mind. Now that I am freshly recovered, I look for the new edge, way beyond the boundaries.

- Shaune Bazner



"Bridge" 30"x 40" acrylic on canvas