

Polaris RZR Ride Command Harness With Remote Wire

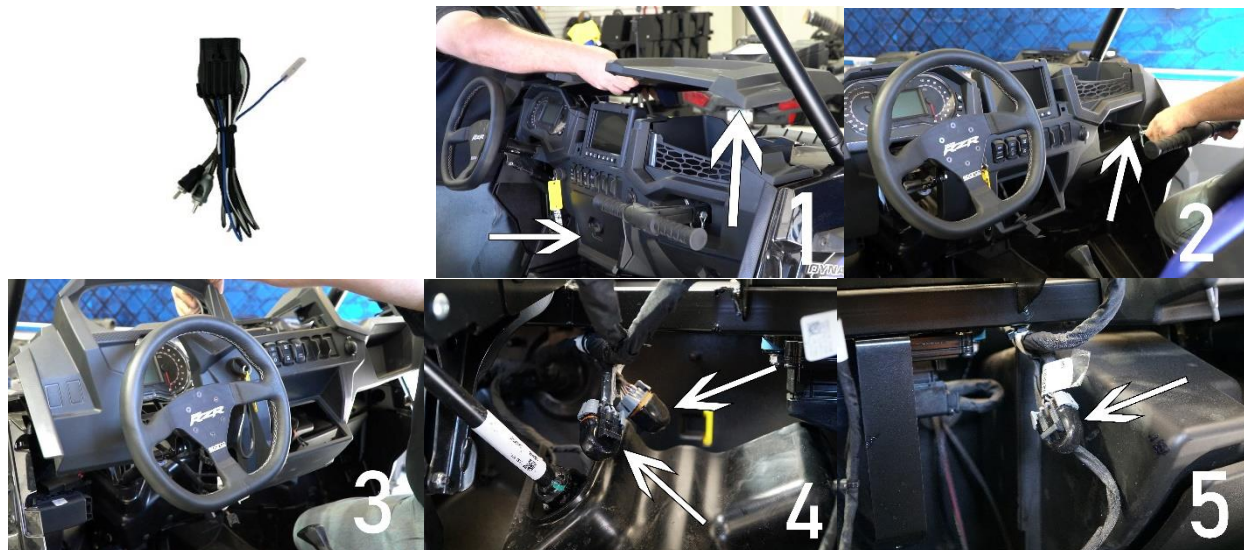
Compatible with all RZR models with factory installed ride command.

Parts List: 1 Ride Command Harness With Remote Wire

Need Help? Call Tech Support: (480)-616-2299

Email: info@utvstereo.com

Go to utvstereo.com for colored installation pictures & YouTube videos.



INSTRUCTIONS

Step 1: Remove hood.

Step 2: Remove the 2 speed clips & 4 torx screws on the upper dash.

Step 3: Remove bolt behind center glove box underneath ride command.

Step 4: Completely remove center glove box and upper dash. (Reference picture 1)

Step 5: Remove passenger grab handle. (Reference picture 2)

Step 6: Remove bolts around the lower dash & remove lower dash. (Reference picture 3)

Step 7: The ride command plugs should be exposed with a black rubber cap. (Reference picture 4 & 5)

Step 8: Plug harness into preferred plug depending on how many amps or speakers you have.

Step 9: Plug RCA's into amplifier.

Step 10: Run blue remote wire to amplifier.

Ride Command Factory Plug Descriptions (Plugs Are Labeled)

(Disclaimer) Ride command harnesses are low level outputs and require an amplifier

- **Factory Plug AMP1** is the front output, full range. Controlled by "front" on Ride Command
- **Factory Plug AMP2** the rear output, full range. Controlled by "rear" on Ride Command. *Tip! For Installs where you are installing a sub-woofer but do not have a sub control knob and you do not need a front to rear fader for the highs, you can use the rear output as a sub channel. Then by fading front to rear you have some control over the level of the sub-woofer. Fading to the front speakers produces less sub output, and fading to rear produces more sub output by lowering fronts.
- **Factory Plug AMP3** full range output. Not independently controlled by Ride Command, no on-screen adjustments. This is a good option for sub-woofer.