

# BELT TEMPERATURE SENSOR KIT

Install guide for 96080001

Fitment:

2017-2021 Can-am X3

2017-2022 Can-am X3 R

2020 Can-am X3 RR

## PARTS LIST

---

- |                    |                   |
|--------------------|-------------------|
| <b>1</b> SENSOR    | <b>1</b> NUT      |
| <b>1</b> HARNESS   | <b>3</b> ZIP TIES |
| <b>1</b> CAN CABLE |                   |

**PLEASE READ ALL DIRECTIONS BEFORE STARTING INSTALLATION**

2191 MENDENHALL DRIVE, NORTH LAS VEGAS, NV 89081  
800-992-4993

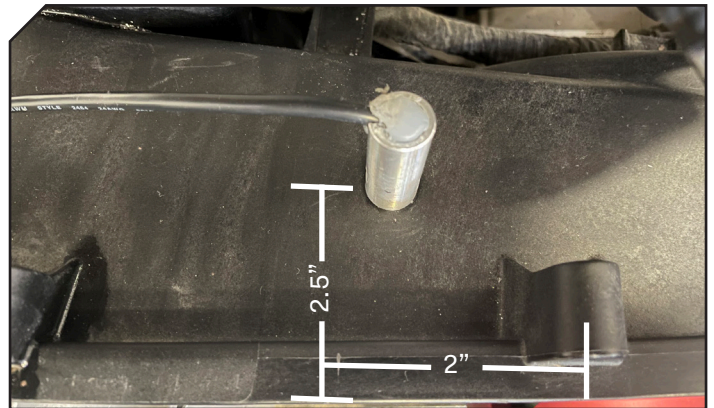
**DYNOJET**

WWW.DYNOJET.COM

# INSTALLATION GUIDE

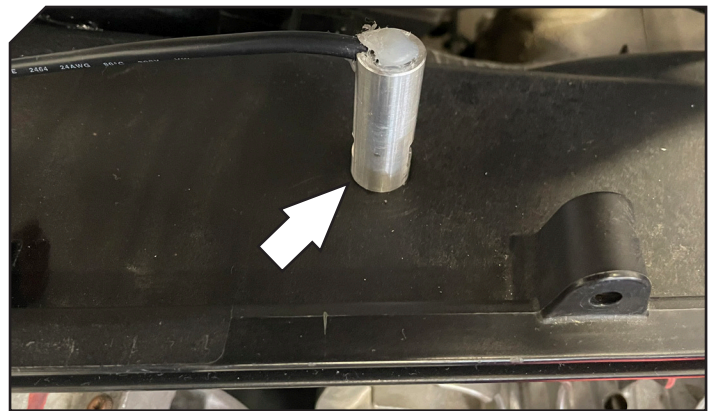
- 1 REMOVE THE CLUTCH COVER. REFER TO SERVICE MANUAL FOR EXACT PROCEDURE.
- 2 DETERMINE THE CORRECT PLACING OF THE SENSOR IN THE CLUTCH HOUSING IN RELATIONSHIP TO THE BELT LOCATION.

*IDEALLY YOU WANT THE SENSOR TO POINT AT THE MIDDLE OF THE BELT AND BE LOCATED HALF WAY BETWEEN THE PRIMARY AND SECONDARY SHEAVES.*



- 3 MARK THE LOCATION ON THE CLUTCH COVER AND USE A 1/2" DRILL BIT TO DRILL A HOLE IN THE COVER.

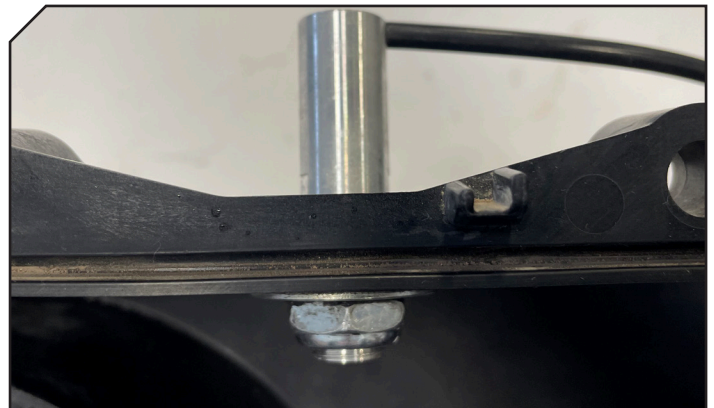
*ON THIS MODEL IT IS EASIEST TO REMOVE THE SECONDARY CLUTCH AND DRILL FROM THE INSIDE OF THE CLUTCH HOUSING.*



- 4 INSTALL THE BELT TEMP SENSOR IN THE CLUTCH HOUSING USING THE SUPPLIED NUT TO SECURE THE SENSOR IN PLACE.

*IF WATER INGRESS IS A CONCERN USE SILICONE TO SEAL THE SENSOR TO THE COVER.*

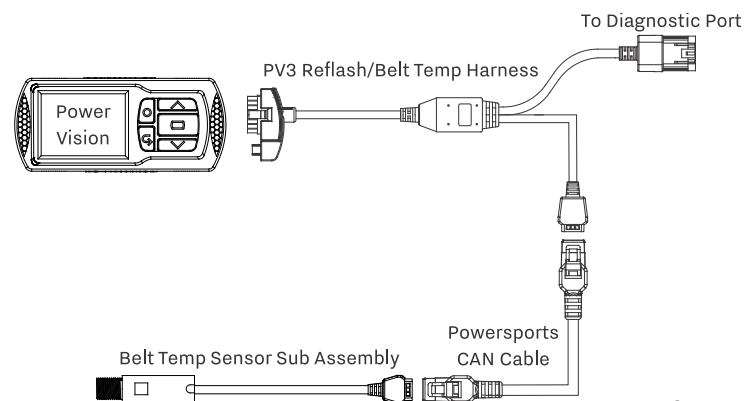
*POSITION THE SENSOR SO THAT THE WIRING HARNESS IS POINTING TOWARDS THE FRONT OF THE VEHICLE.*



- 5 CONNECT THE CAN EXTENSION CABLE TO THE BELT TEMP SENSOR AND RUN UP TO THE PV3. YOU WILL REMOVE THE CABLE CURRENTLY RUNNING FROM THE DIAGNOSTIC PORT AND REPLACE WITH THE SUPPLIED CABLE.

*IF YOU ARE CURRENTLY USING A WBCX RUN THE CAN EXTENSION CABLE INTO THE WIDEBAND MODULE AND THEN YOU WILL NEED CABLE 76950145 TO CONNECT TO THE PV3.*

- 6 FOR THIS DEVICE TO FUNCTION PROPERLY THE PV3 MUST HAVE FIRMWARE 4.8 OR NEWER. ON THE PV3, GO TO DEVICE TOOLS - GAUGE SETUP AND PICK BELT TEMP AS A CHANNEL TO VIEW THE DATA ON THE SCREEN. THE FIRMWARE IS DESIGNED TO TURN YOUR VALUES TO RED WHEN THE BELT TEMP REACHES 225F DEGREES.



**PUSH THE LIMIT.**