

WASTEGATE ACTUATOR

2016-2021 Polaris RZR XP Turbo

PARTS LIST

×

- | | |
|-------------------------------|----------------------|
| 1 WASTEGATE ACTUATOR ASSEMBLY | 1 BOOST CONTROL TUBE |
| 1 MOUNTING BRACKET | 1 SMALL HOSE CLAMP |
| 4 WASHERS | |

PLEASE READ ALL DIRECTIONS BEFORE STARTING INSTALLATION.

×

96010003

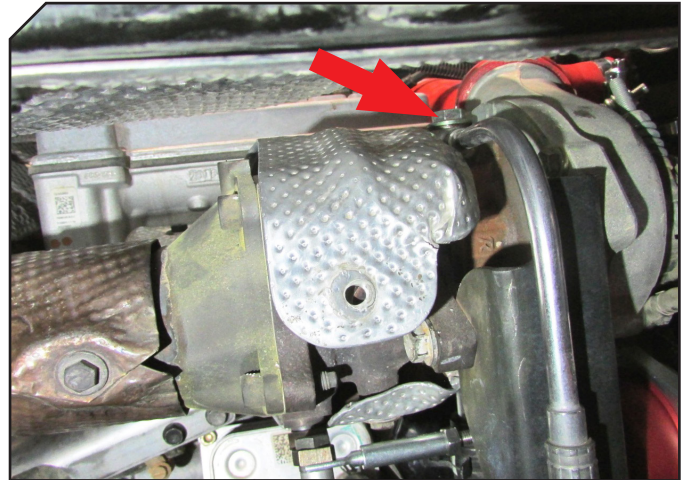
ATV
TRUCK
UTV

INSTALLATION INSTRUCTIONS

Remove the rear most seats and the panel behind them to access the front of the engine and turbo area.

The turbo support brace will need to be loosened and pulled away from the turbo.

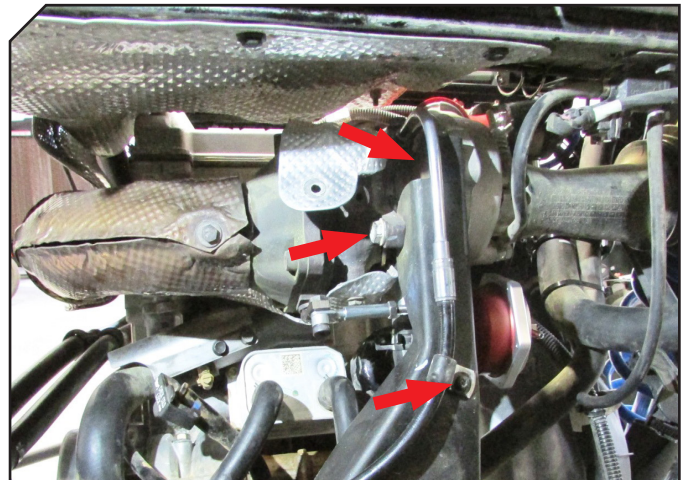
Start by loosening the oil feed line at the top of the turbo.



OIL FEED LINE AT TOP OF TURBO

Remove the bolt holding the oil feed line to the back of the brace.

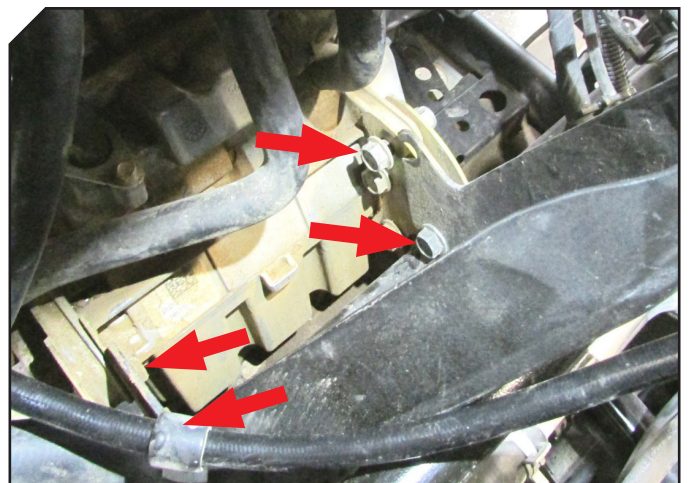
Remove the two bolts at the top of the support brace going through the turbo.



TURBO SUPPORT BRACE (UPPER END)

Loosen the four bolts at the lower end of the support brace.

Pull the top end of the brace as far away from the turbo as possible.



TURBO SUPPORT BRACE (LOWER END)

INSTALLATION INSTRUCTIONS

Loosen the oil return line from the bottom of the turbo.

Remove the stock wastegate actuator and holding bracket.

(Pump just enough air pressure into the actuator to remove spring pressure from the clevis arm before loosening it from the wastegate.)

Install the Dynojet mounting bracket on to the turbo.
Add two of the supplied washers to the stock bolts.

Install the Dynojet actuator on to the mounting bracket.
Use two supplied washers.

Attach the clevis arm to the wastegate. The clevis arm should be flat and up against the arm of the wastegate. Use the supplied bolt and nut. The nut and bolt should be able to spin freely after tightening.

The crack pressure comes pre-set to 10 psi; but it is recommended to verify crack pressure before running the vehicle.

Make sure the actuator arm is centered in the hole of the mounting bracket after tightening all hardware.

Re-attach the oil return line to the bottom of the turbo.

Re-attach the top of the support brace to the turbo.

Tighten the hardware at the lower end of the support brace.

Re-attach the oil feed line to the top of the turbo.
Re-secure the oil feed line to the back of the support brace.

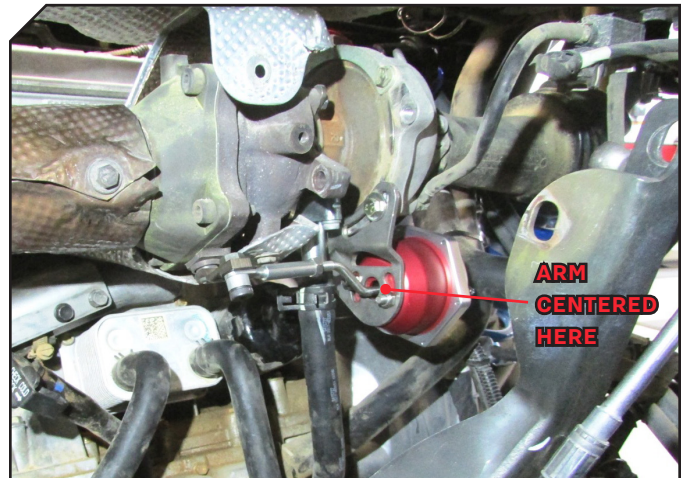
Attach the new boost control tube to the Dynojet actuator. Use the small hose clamps at both ends.

Re-install the paneling and seats.

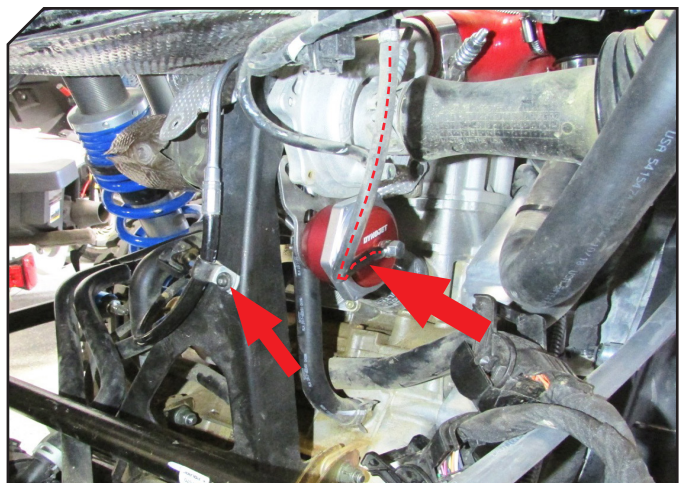
For ease of oil filter replacement it is recommended to use the updated Polaris oil filter part # 2520799



OIL RETURN LINE AT BOTTOM OF TURBO



DYNOJET ACTUATOR INSTALLED



BOOST CONTROL TUBE

96010003

DYNOJET



PUSH THE LIMIT

2191 MENDENHALL DRIVE, NORTH LAS VEGAS, NV 89081 - 800-992-4993 - DYNOJET.COM

© 2019 DYNOJET RESEARCH ALL RIGHTS RESERVED