

BIGBOI SUCKR PRO + INSTRUCTION MANUAL

SUCKR[®] PRO +



WET & DRY 2 IN 1 VACUUM CLEANER

Please read the operating instructions carefully before use.

WARRANTY INFORMATION

	BIGBOI offers a limited warranty of 2 years for non-commercial use and 1 year for commercial use
--	---

PROOF OF PURCHASE

Please retain your dated proof of purchase as it will be required for warranty claims and service requests.

REPLACEMENT PARTS

Replacement parts for this product can be found at www.ibigboi.com. For all part orders, please reference the part numbers provided in this manual where applicable.

LIMITED TOOL WARRANTY

BIGBOI is committed to ensuring that this product meets the highest standards of quality and durability. For non-commercial customers, BIGBOI offers a 2-year limited warranty & 1-year for commercial customers from the date of purchase, covering manufacturing defects in materials. This warranty does not cover defects resulting from misuse, abuse, normal wear and tear, negligence, accidents, unauthorized repairs, alterations, or insufficient maintenance.

To utilize this limited warranty, return the product at your expense along with the dated proof of purchase to BIGBOI or an authorized reseller in your region. For assistance, contact our customer service team. If any part covered under this warranty is found to be defective in workmanship or materials during the warranty period, BIGBOI will repair or replace the product.

NOTE TO USER

This instruction manual is intended for guidance purposes only. Specifications and references may be changed without prior notice.

BIGBOI INTERNATIONAL PTY LTD

UNIT 33/172 Milperra road Revesby NSW 2122 Sydney Australia.

GENERAL & SPECIFIC SAFETY RULES

Safety relies on common sense, attentiveness, and understanding how your SUCKR PRO+ operates. Before use, read and understand the following safety guidelines. Familiarize yourself with its functions, limitations, and potential hazards.

1.REMOVE ADJUSTMENT KEYS AND WRENCHES.

Make it a habit to check that all keys and adjustment wrenches have been removed from the tool before powering it on.

2.KEEP WORK AREA CLEAN.

Cluttered workspaces and benches can lead to accidents. Keep the floor clean, free of clutter, and non-slippery.

3.AVOID DANGEROUS ENVIRONMENTS.

Do not operate the unit in damp or wet environments, and avoid exposing it to rain. Ensure the work area is well-lit with sufficient space around the unit. Do not handle the electrical plug or the unit with wet hands. Never vacuum materials that are burning, smoldering, or producing smoke, such as matches, cigarettes, or hot ashes. Avoid vacuuming flammable or combustible liquids, such as gasoline, or any electrical devices that could spark and cause a fire or explosion. Do not vacuum toxic or hazardous substances. When wet vacuuming, ensure the container is level to reduce the risk of electric shock.

4.KEEP AWAY FROM CHILDREN.

All children should be kept a safe distance from work area.

5.USE CORRECT SPEED.

The unit best performs when operated at the correct speed.

6.USE FOR THE RIGHT PURPOSE

Do not force the unit or the attachments to do a job for which it was not designed.

7.WEAR APPROPRIATE CLOTHING.

Where necessary, use a dust mask, hearing protection, gloves, and a workshop apron that can guard against small abrasive particles or workpiece debris. Avoid wearing loose clothing, gloves, neckties, or jewelry to minimize the risk of entanglement in moving machinery. It is advisable to wear non-slip footwear and other protective gear.

hair covering to contain long hair. Roll up long sleeves above the elbows.

8.ALWAYS WEAR SAFETY GLASSES.

Always wear safety glasses. Regular eyeglasses only have impact-resistant lenses and do not provide adequate protection. The safety glasses must be designed to guard against flying particles produced during various operations.

9. DON'T OVERREACH.

Keep proper footing and balance at all times.

10. AVOID ACCIDENTAL STARTING.

Make sure the switch is in the "OFF" position before plugging in.

11. USE RECOMMENDED ACCESSORIES.

Refer to the manual for suggested accessories and adhere to the provided instructions. Using incorrect accessories can lead to safety hazards.

12. NEVER STAND ON THE UNIT.

Serious injury may result if the unit tips over. Avoid placing materials on top of the unit as a platform.

13. CHECK DAMAGED PARTS.

Before using the SUCKR PRO + again, carefully inspect any damaged guards or parts to ensure they function correctly. Check for the alignment of moving parts, any broken components, secure mounting, and other conditions that may impact operation. Damaged guards or parts should be repaired or replaced appropriately.

14. NEVER LEAVE MACHINE RUNNING UNATTENDED.

Turn the power "OFF." Do not leave the SUCKR PRO+ running until it has completely stopped.

15. STORING THE SUCKR PRO

This unit must be stored indoors. -5°C to +40°C

16. Never use this vacuum without dust bag and/or filters installed. The replacement HEPA and High Efficiency filters and accessories are available and are listed in the parts list.

17. Never use this vacuum with any opening blocked, keep opening free of dust, hair, lint or anything that will restrict air flow.

18. Only use undamaged power cords and regularly check condition of extension cords.

SPECIFIC SAFETY RULES:

1.The appliance should not be used by individuals (including children) with reduced physical, sensory, or mental capabilities, or those lacking experience and knowledge, unless they are under supervision or have received proper instruction.

Children under supervision should not be allowed to play with the appliance.

Ensure that the plug is removed from the socket before cleaning or maintaining the appliance.

If the supply cord is damaged, it must be replaced by the manufacturer, a service agent, or other qualified individuals to prevent any hazards.

1.CONDITIONAL MARKS

General warning sign



(Risk to people, explained
by additional sign or text)



See the instructions on safety and
operation techniques/brochure



Wear hearing protection



Wear eye protection



Wear a mask



Risk of electric shock !



Alternating current

IP

Degree of protection
against dust and water

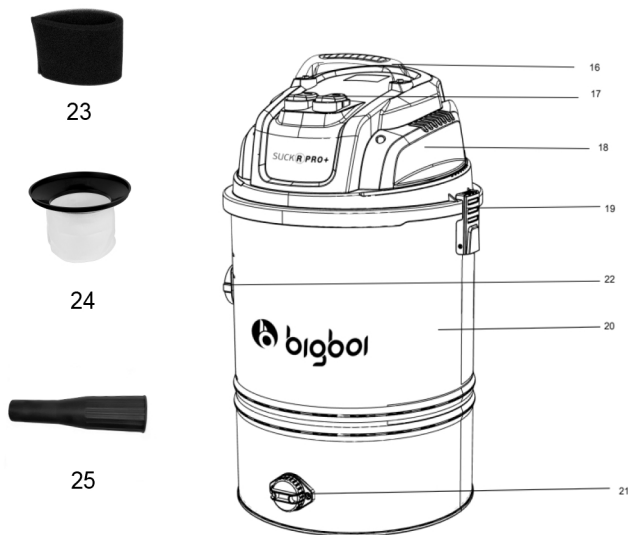


Special disposal to prevent possible
damage to the environment, it is
necessary to separate this object
from ordinary waste and dispose of
it in the safest way)

2.GETTING TO KNOW YOUR SUCKR PRO +

Vaccum Cleaner :

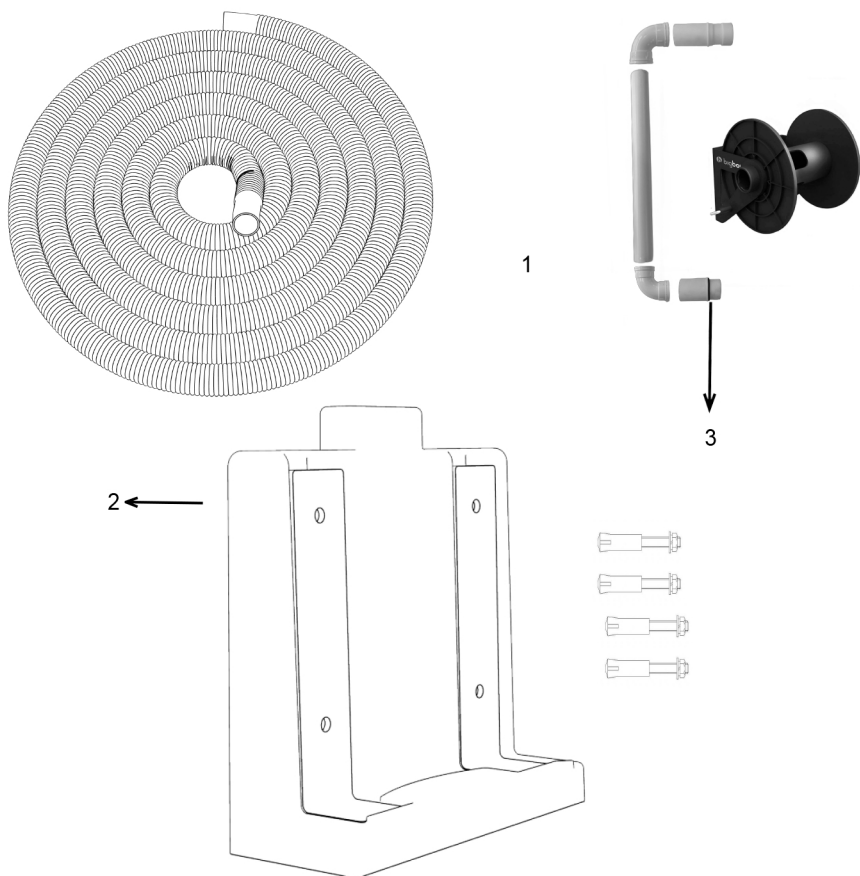
- 1.Crevice tool
- 2.Dust paper bag
- 3.HEPA filter
- 4.Small round brush
- 5.Rotating floor brush
- 6.Flat flexible crevice tool
- 7.Tiny tube tool
- 8.8pcs micro kits
- 9.Pet removal tool
- 10.Remote with holder strap
- 11.Sofa brush
- 12.Wet/dry brush
- 13.Extend plastic tube
- 14.Metal telescopic tube
- 15.Accessory bag
- 16.Handle
- 17.ON/OFF Switch *2
18. Top head
- 19.Side latch
- 20.Metal tank
- 21.Drain
- 22.Suction port
- 23.Sponge filter
- 24.Cotton bag filter Kit
- 25.Hose adapter



Pic.1



Wall mounted KIT (BOX 2)



Pic 2

- 1.10M hose assemble 2.Wall mounted bracket kit
3.PVC Pipe Kit & REEL



BIGBOI is constantly working on improving its products and reserves the right to make changes to the appearance, design, equipment, and content of the original instructions for the safety and operation of the SUCKR PRO + without notifying consumers. All possible changes will be aimed exclusively at the improvement and modernization of the SUCKR PRO +.

BIGBOI SUCKR PRO+ PVC DUCT KIT

Connecting Your SUCKR PRO+ to the Bigboi Wall-Mounted Hose Reel

To connect your SUCKR PRO+ to the Bigboi wall-mounted hose reel, use the included PVC duct kit. This kit is designed to seamlessly connect the inlet of your SUCKR PRO+ to the hose reel, allowing you to take full advantage of its extended 10m hose.

The kit is specifically designed to fit underneath the SUCKR PRO+. Before gluing the components, we recommend dry-fitting the pieces to ensure everything is aligned properly and level. Once confirmed, proceed to glue the parts together.

KIT INCLUDES:

Kit Contents:

- 2 x Elbow bends (image 1)
- 1 x 50mm Straight pipe (image 2)
- 1 x Top push-in connector for the SUCKR PRO+ (image 3)
- 1 x Bottom screw connector for the hose reel (image 4)

Important: PVC glue is required to complete the installation properly.
Please note, PVC glue is not included in this kit.

Glue Assembly:

After mounting the SUCKR PRO+, follow these steps to complete the assembly:

1.Attach the Hose Reel Connector

Begin by locating the connector (see Image 4) and screwing it into the hose reel input. Since this connector will stay permanently attached, start here to ensure proper alignment. Set the reel aside until later.

2.Dry-Fit the Duct Kit

Using the connector (see Image 3) for the SUCKR PRO+ inlet, begin dry-fitting the duct kit. Attach the first elbow (see Image 1) so it points downward, then connect the straight pipe to the elbow. Repeat this with the second elbow at the bottom. If available, use a level to check alignment. Adjust the joints as needed to achieve a level fit.

3.Position the SUCKR PRO+ Hose Reel

After all connections are dry-fitted, click the top duct inlet into the SUCKR PRO+. Then, position the wall-mount hose bracket underneath the SUCKR PRO+. Ensure it aligns centrally with both the SUCKR PRO+ and the duct piping.

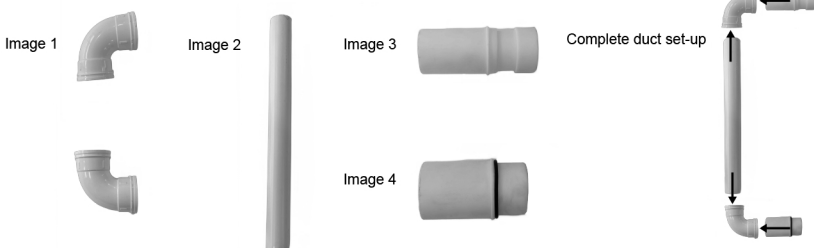
Use a level to verify alignment and mark the mounting holes for the hose bracket.

4.Glue the Ducting

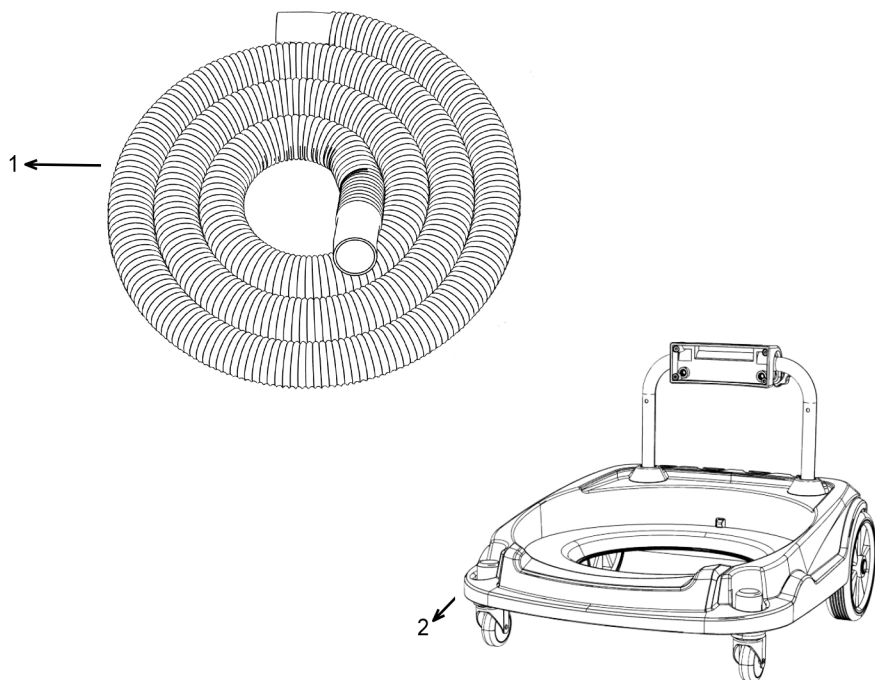
Once everything is aligned and marked, Mount the hose reel. Next disassemble the PVC parts (except the hose reel connector) and apply PVC glue to secure them. Work from the top down leaving the last bottom elbow connector to glue to the hose reel connector. Continue using the level during the gluing process to ensure everything remains properly aligned.

5.5.Attach the Hose

Attach the 10m hose to the reel with a twisting locking motion. Then, reel the hose neatly by guiding it onto the reel, and you're all set to go!



Wheelbase KITS (SOLD SEPARATELY)



Pic 3

1. 5M hose assemble 2. Wheelbase kit



BIGBOI is constantly working on improving its products and reserves the right to make changes to the appearance, design, equipment, and content of the original instructions for the safety and operation of the SUCKR PRO + without notifying consumers. All possible changes will be aimed exclusively at the improvement and modernization of the SUCKR PRO +.

3. TECHNICAL DATA

Parameter	SUCKR PRO+
Rated voltage	220-240 V
Frequency	50/60HZ
Rated Power	1200*2 W
Motor	Twin copper motors
Container volume	50L
Wet volume(max)	26L
Vacuum Pressure (inches of water)	90 inchH2O
Air suction capacity at Air Inlet	64L/S
Suction (max)	22 KPA
Degree of protection against dust and water	IPX4
Hose diameter	40mm
The length of the power cord	5M
Two operation types	Wall mounted bracket or wheelbase
The length of the hose	5M/10M
Tank material	SUS410
Noise	≤85db



The parameters are indicated for a nominal voltage of 220V 240V with a frequency of 50/60 Hz. At other values of voltage or frequency, other parameters are possible.

4. PREPARATION FOR WORK



Before preparing to use, during maintenance and after use of the SUCKR PRO+, Unplug the plug from the socket.

Unpack the SUCKR PRO + and its accessories from the packaging and inspect them for any external damage.

Check the condition of the filters. For filters intended for dry cleaning (paper) and non-woven filters, if they are dirty, clean them using a stream of compressed air with a pressure not exceeding 0.3 MPa. If impurities cannot be removed, replace the filters with new ones.

Filters designed for wet cleaning (sponge) can be cleaned by soaking them in lukewarm soapy water. After cleaning, rinse them in clean water and gently squeeze out any excess water—do not twist. Allow them to dry completely before use.

Inspect the gaskets, and if any damage is found, replace them with new ones.

PRODUCT CHARACTERISTICS

The SUCKR PRO+ is specifically designed for cleaning workshops and vehicles in both dry and wet applications, which are beyond the capabilities of a standard household vacuum cleaner. With its spacious container and long, flexible hose, it allows for easy access to all areas of a car, making thorough cleaning of hard-to-reach spots effortless.

Two operation Kits for different working demand.

1. **Wall-Mounted** : Maximize floor space and enhance convenience with simple installation.
2. **Wheelbase**: The base equipped with casters allows for easy transportation.

The vacuum cleaner has been fitted with replaceable air filters.

Correct, reliable and safe operation of the product depends on proper operation, therefore:

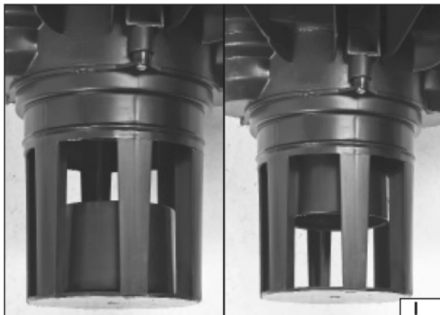
Before using this vacuum, please read this manual carefully and store it in a safe place..

The supplier does not assume any liability for damages resulting from failure to follow safety regulations and recommendations specified in this manual.



NOTE!

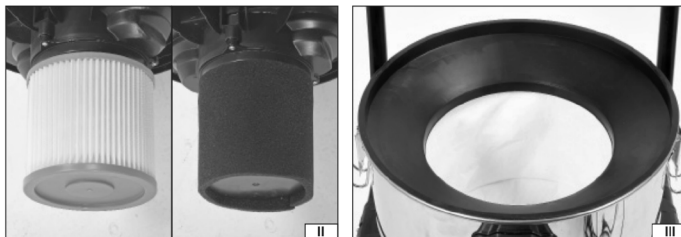
It is forbidden to work with a vacuum cleaner without properly installed air filter.
This may lead to damaging the vacuum cleaner and also cause an electric shock.



A metal chain is attached to the bottom of the container. Ensure that it remains in contact with the ground during operation, as this will help discharge any electrostatic charges that may build up.

The vacuum cleaner is equipped with a float (I) that cuts off the air supply whenever the tank overflows. Before starting work, verify that the float and its guides are undamaged, clean, and allow for free movement of the float. Each time the float is activated, you will notice a louder motor sound and a decrease in suction power.

Note: Using the vacuum cleaner without a properly functioning float is prohibited.



The vacuum cleaner is equipped with two types of filters designed for different applications.

The sponge filter (II) in black is intended for wet cleaning.

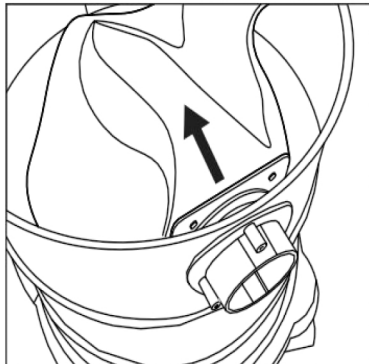
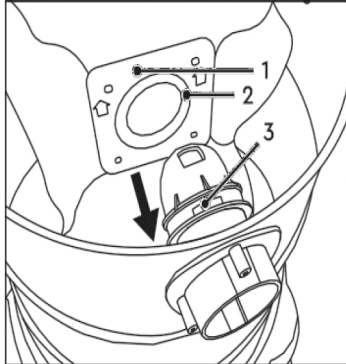
The HEPA (I) and cotton bag filter (III) in white is meant for dry cleaning.

Regardless of the type, the filter should be slid over the float guides, covering them completely. Ensure that the filter does not slip off the float guide on its own.

Using the incorrect filter type is prohibited. Employing a filter designed for dry cleaning during wet cleaning may damage the filter and potentially harm the vacuum cleaner. Similarly, using a filter meant for wet cleaning during dry cleaning will not provide adequate filtration and may also damage the vacuum cleaner.

For dry cleaning, attach the non-woven fabric filter (III) between the edge of the container and the cover. Ensure that the rubber filter flange, the edge of the container, and the edge of the cover are free from impurities. Additionally, include the metal basket, which prevents the bag from collapsing and allows it to fill completely without losing suction.

This will ensure a proper seal of the container once the cover is attached, thus enhancing work efficiency.



IV

Installation of a replaceable filter dust paper bag(IV)

-Install the replaceable filter bag (1) on the seat (3) .The rubber seal (2) must fully enter the corresponding groove.

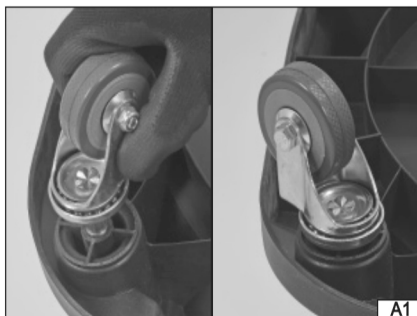
-Pull the filter bag in the opposite direction of the installation making sure well fixed.

Note: The dust bag is suitable only for dry vacuum-cleaning ONLY!



Attach the lid onto the upper edge of vacuum cleaner container so that it adheres with its entire circumference. Using latches, hold the lid tight against tank. Please note that there are two marked points on the lid that allow obtaining proper tightness of fastening (V).

A.WHEELBASE KIT with 5M HOSE (SOLD SEPARATELY)



The base of vacuum cleaner features possibility of mounting the casters. Attach the front swivel casters by inserting the caster plugs into holes in the base of container (A1). Attach the axle with rear casters to the base using screws (A2).

B.WALL MOUNTED BRACKET KIT with 10M HOSE

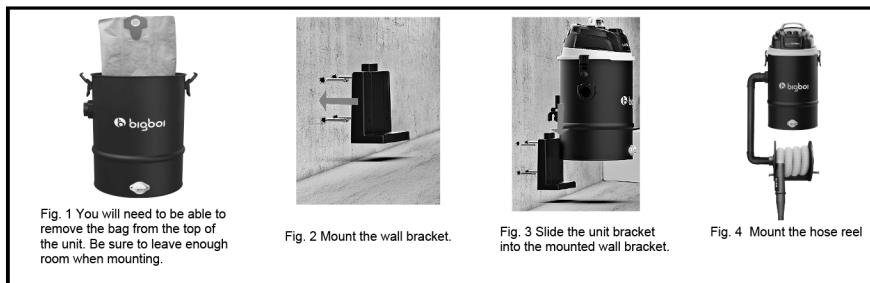


Fig. 1 You will need to be able to remove the bag from the top of the unit. Be sure to leave enough room when mounting.

Fig. 2 Mount the wall bracket.

Fig. 3 Slide the unit bracket into the mounted wall bracket.

Fig. 4 Mount the hose reel

CHOOSE THE MOUNTING LOCATION

- The unit must be mounted within 16 feet of an electrical outlet. Do not use an extension cord.
- The unit should be mounted so that it is in a dry location and out of the way, but still accessible for emptying and accessing the utility valves.

Suggested mounting: Minimum of 12 inches between unit lid and ceiling or shelving.

- Do not install this unit where ambient temperature regularly exceeds 120 degrees F

MOUNTING THE WALL BRACKET (SHEETROCK)

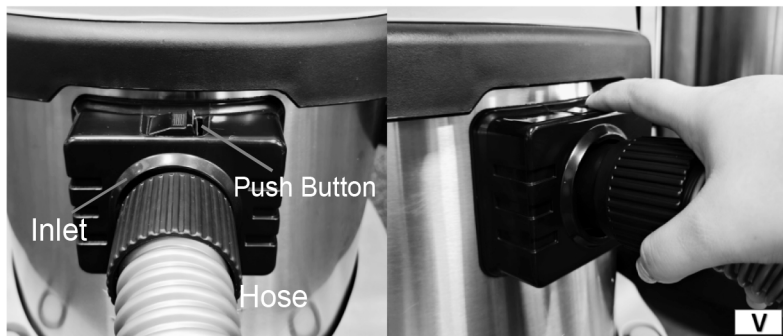
1. Find center of stud and mount the wall bracket. Note, the bracket mounts in the middle of the unit, so you will need to mount approx. 3" below your desired unit height. See fig. 1 for more details
2. Mount the wall hanger bracket with washers and lag screws provided. (Side grommets are for vibration. Use the four vertical holes at corners for mounting.)
3. Tighten screws until the washers are snug against the rubber grommets. (Fig. 2)

ATTACHING UNIT TO MOUNTING BRACKET

Mount the SUCKR PRO+ by sliding the attached unit bracket onto the wall bracket (Fig. 3) and slide it down until the unit rests securely into the bracket.

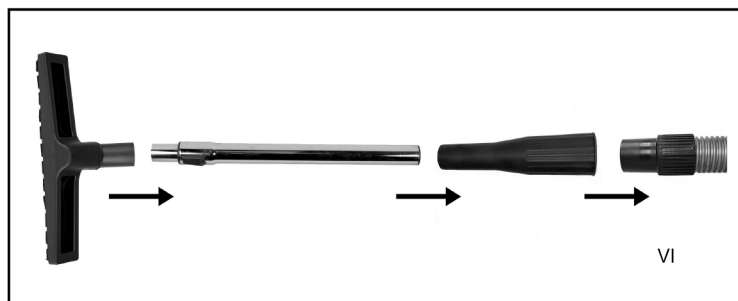
MOUNTING THE HOSE REEL

Mount the hose reel with washers and lag screws provided, and link with SUCKR PRO+ with PVC pipe in the set. Fig. 4



Insert Hose

Insert the push-button end of the hose assembly into the SUCKR PRO + inlet until it snaps securely into place. To detach the hose from the Vac, press the release button on the hose inlet assembly and pull the hose out, as shown (PIC. V.)



To connect the metal or plastic telescopic tube, insert the narrower end into the free end of the elastic hose using the hose adapter (VI). Similarly, attach your chosen accessory, such as a brush or other detailing tools, to the free end of the tube.

Select the appropriate accessory based on the task at hand. The floor brush is designed for cleaning large, flat surfaces, while the crevice tool is ideal for accessing tight spaces that a wider nozzle cannot reach. The SUCKR PRO+ offers a wide range of high-quality accessories to meet various car cleaning needs.

To disconnect the hose, rotate the connector in the direction indicated by the arrow labeled "OPEN," then slide the connection out of the inlet orifice. Remember that the disassembly of extension pipes and nozzles should be performed in the reverse order of assembly.

5. WORKING WITH THE SUCKR PRO +



VI



VII

NOTE! It is forbidden to work with a vacuum cleaner with hot ashes. The temperature of trash sucked in by the vacuum cleaner cannot exceed 40 degrees centigrade.

Ensure that all preparatory steps have been completed correctly.

Check that the vacuum cleaner switch is in the off position ("O"). Plug the power cord into the mains socket, then turn the switch to the on position ("I") (VI).

The vacuum cleaner is equipped with two switches. Activating either switch to the on position ("I") will start the vacuum cleaner and enable normal operation. If you switch the second switch to the on position ("I") as well, the second motor will engage, enhancing efficiency. This will increase both the suction power of the vacuum cleaner and its electricity consumption.

To turn off the vacuum cleaner, switch both controls to the off position ("O").

Wireless Remote Control (included in the SUCKR PRO+)

Press the on/off button (●) on the remote to turn it on, and select from three suction settings: low, medium, or high (VII).

▲HighPower+ ▼LowPower-

NOTE! The remote control takes precedence over the unit's switch control. When the remote turns off the SUCKR PRO+, the switch control will be deactivated. Keep the switch into 'I', then turn on with remote , that it activates the switch again.



B3 Pairing button

B2



B1

Remote Programming :If the remote is not working or you are using a new remote, programming is necessary.

- ① Plug in the power socket and Switch both motors to the ON position -"I"(B1)
- ② Press the pairing button (B3) twice continuously & at the same time press (B2), and hold down ON/OFF (●) on the remote & then release the power button.
- ③ To check if the pairing was successful, press the ON/OFF button on the remote control. The unit should turn on. If the unit does not respond to the selected commands, the pairing was unsuccessful, and it's recommended to repeat the process.

(Note: The SUCKR PRO+ is pre-programmed and ready to use immediately upon receipt.)



Note: Large objects can get caught in the brush, which can cause it to overheat. Be sure to pick up large objects that may cause blockages before cleaning.



Never use solvents or other aggressive chemicals to clean non-metallic parts of the SUCKR PRO + .

These chemicals can degrade the properties of the materials used in these parts. Do not allow any liquid to get inside the SUCKR PRO + .



Wear a mask

Regularly (preferably after each use) wipe the body of the unit and accessories with a soft cloth or blow with compressed air.

After dry cleaning:

- Dismantle the cover
- Check the container's filling level.
- Replace new dust paper bag regularly

Due to container capacity, it is recommended to empty it after each use. It will be easier than emptying a full container.

After Wet cleaning:

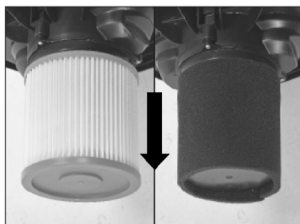
- Open the drain cover placed near its base
- Empty the container

Impurities remaining in container can be removed by tilting the container. After having it emptied, clean the container with a water jet. Close the cover and then dry thoroughly.

Note! If during operation suspicious vibrations, drop in suction force or louder operation of the engine are observed, this may indicate that the container is full or the hose, extension tubes or suction nozzle are clogged. In this case, immediately switch off the vacuum cleaner with the switch and unplug the power cord from the mains socket. Then empty the container and check patency of hose and endings. If necessary, unclog it. If it is not possible to unclog the hose, extension pipes or suction nozzle replace them with new ones before continuation of work.

Filter maintenance:

Remove the HEPA/Sponge filter from the top cover of the vacuum cleaner, rinse with water and dry(VIII).



VIII



It is strictly forbidden to operate the unit without an installed filter.



Filters are installed on the base located in the lower part of the electric motor section. If the filter breaks, you should immediately turn off the unit and replace the filter with a new one. Regular cleaning contributes to the long-term maintenance of maximum suction power.



To prevent mold formation, remove the filter after use and dry it well, especially before dry vacuuming usage. The warranty does not cover consumables that wear out. Replaceable components such as HEPA filters, textile and paper bags, etc., must be replaced as they wear out.

CAUTION:

The SUCKR PRO+ features thermal overload protection to safeguard the motor from extreme temperatures. If it suddenly stops working, please turn the unit off and unplug from the outlet. Check to ensure the HEPA filter and hose are not blocked with debris. If clean from debris, restart the unit once it has cooled down. If debris is present, please clean and/or change HEPA filter

7.STORAGE AND TRANSPORTATION

It is recommended to store the SUCKR PRO + in a dry place inaccessible to children, at a temperature from -5°C to +40°C, with a relative humidity of no more than 80%.

If

you have stored or transported the unit at a temperature lower than that at which you plan to use it, you must ensure that there is no condensation on the unit. If condensation forms on the components and parts of the unit, its further preparation for work or operation is prohibited until the condensation dries completely.

For storage and transportation, use the original or other packaging to avoid damage to the unit and its accessories during transportation.

The unit can be transported by all types of transport, in accordance with the general rules of transportation. During loading and unloading operations and transportation, the unit should not be exposed to shocks and atmospheric precipitation.

Placement and fastening of the unit in vehicles must ensure a stable position and the absence of the possibility of its movement during transportation.

8.DISPOSAL

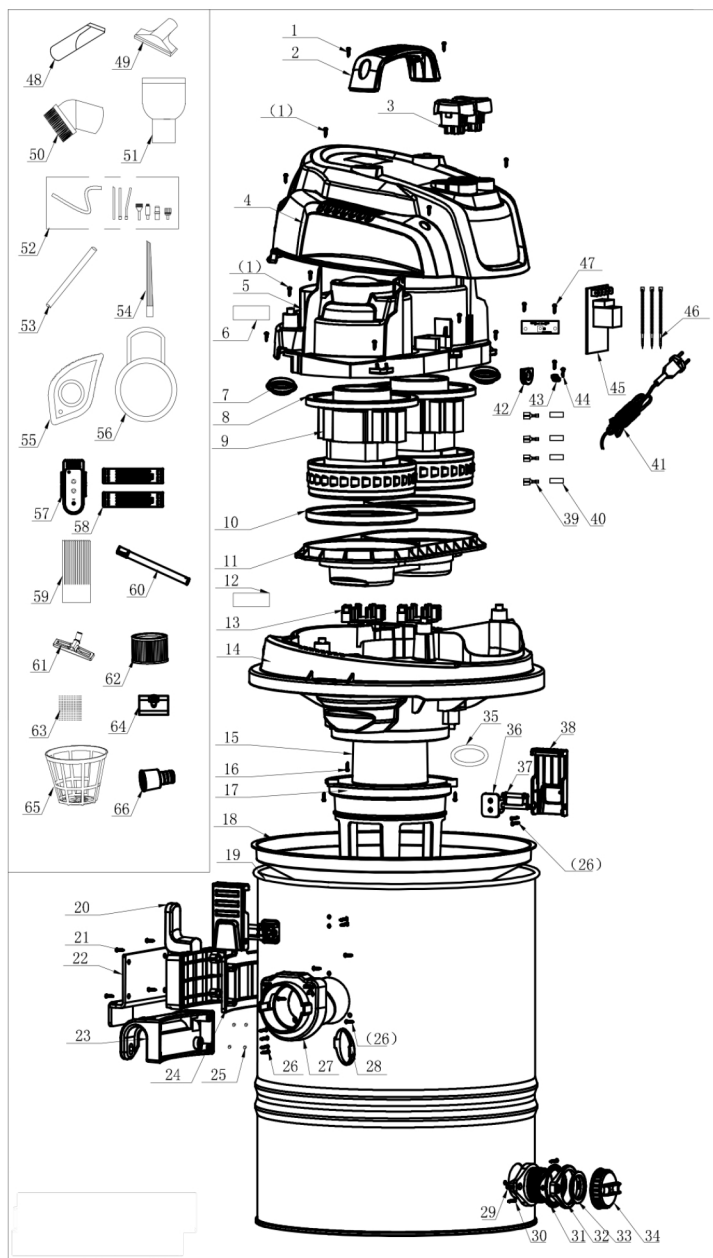


Do not throw away the SUCKR PRO + together with household waste. Units that have been removed from operation are subject to separate storage and disposal in accordance with environmental protection legislation.

9.POSSIBLE FAULTS AND METHODS OF THEIR ELIMINATION

Malfunction	Possible reason	Handling method
Engine housing overheating	Poor cooling	Clean the ventilation holes. Make sure that the ventilation holes are not closed during operation.
	Contamination of the filter element	Clean the filter element.
	Mismatch of network parameters	Make sure that the electrical network has a voltage of 220-240V and a current frequency of 50/60Hz..In case of discrepancy, use a voltage stabilizer.
Weakening of suction power	The bag is full	Replace the bag. Make sure that the new bag is correctly installed and straightened.
	Clogging in the hose/nozzle	Turn off the vacuum cleaner. Mechanically clean the hose/nozzle. Do not suck up large pieces of garbage and or household waste.
	Contamination of the filter	Mechanically clean the filter by shaking it or blowing it with compressed air.

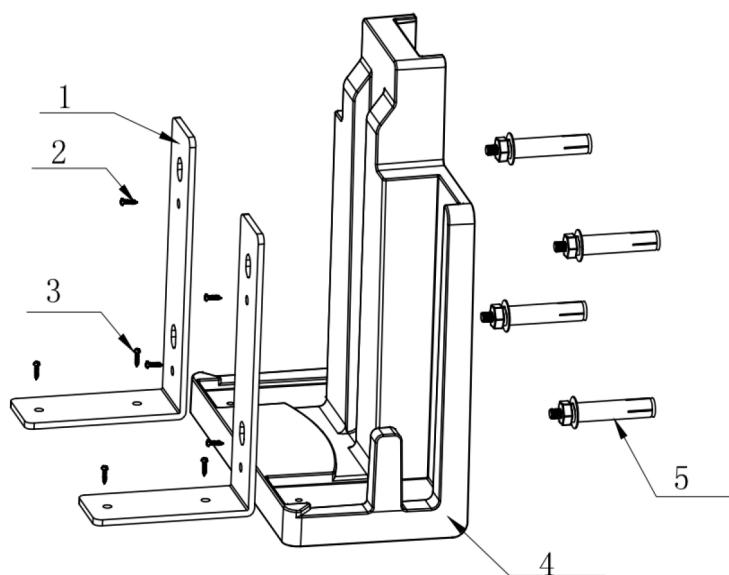
10-1. PARTS DIAGRAM MODEL SUCKR PRO +



10-2. PARTS LIST MODEL SUCKR PRO +

NO.	ITEM	QTY	NO.	ITEM	QTY
1	Screw5*20 (flat head)	12	36	Buckle1	2
2	Handle	1	37	Buckle2	2
3	ON/Off switch	2	38	Buckle3	2
4	Top Head	1	39	Spring	4
5	Motor cover	1	40	heat shrink tubing	4
6	Silence sponge2	1	41	5M power cable	1
7	Motor extend tube (PKM motor)	1	42	Power cable rubber plug	1
8	Motor upper sealing ring	2	43	Pressing line plate	1
9	PKM motor 1200W	2	44	Screw 4*18 (flat head)	2
10	Motor down sealing ring	2	45	PC board	1
11	Motor holder	1	46	Cable ties	3
12	Silence sponge2	1	47	Screw 4*10	2
13	Octagonal holder	1	48	Φ32 Crevice nozzle	1
14	Base	1	49	Φ32 Sofa brush	1
15	Safety valve	1	50	Φ32 Samll round brush	1
16	Screw4*15	3	51	Φ32 Floor brush	1
17	Base basket	1	52	Spes micro kits	1
18	Cotton bag	1	53	Plastic tube (37.5cm)	1
19	Metal tank	1	54	Flat flexible crevice tool	1
20	Power cable hook	1	55	Pet removal kit	1
21	Screw5*30 (flat head)	4	56	Accessory bag	1
22	Wall mounted hook	1	57	Remote	1
23	Screw clip	1	58	Remote holder	1
24	Wall mounted fixed base	1	59	Tiny tube brush	1
25	Screw sealing particles	4	60	Metal telescopic tube	1
26	Screw 4*16	11	61	Wet/dry brush	1
27	Airlet hose base	1	62	HEPA filtration	1
28	Airlet hose base sealing ring	1	63	Sponge filtration	1
29	Drain base	1	64	Dust paper bag	1
30	SS Screw4*20	2	65	Cotton bag metal basket	1
31	Drain base sealing ring	1	66	Hose adapter (Φ40mm to 32mm)	1
32	Drain clamp ring	1	67		
33	Drain cap sealing ring	1			
34	Drain cap	1			
35	Base basket sealing sticker	1			

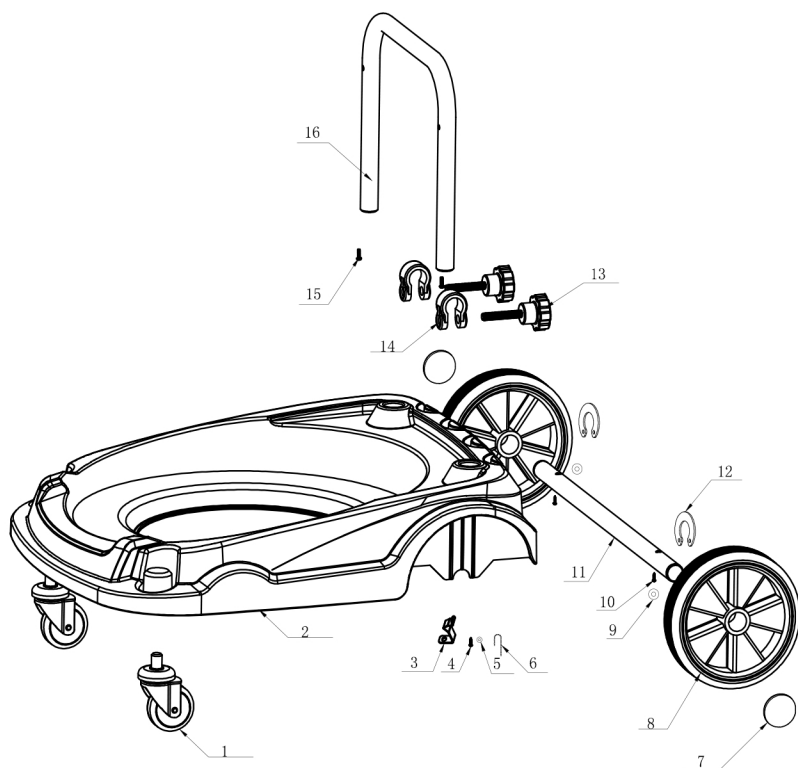
11. PARTS DIAGRAM&LIST MODEL WALL MOUNT KIT OF SUCKR PRO +



NO.	ITEM	QTY
1	Bottom plate	2
2	Screw 5*12(Flat head)	4
3	Screw 5*20(Flat head)	4
4	Wall mounted base	1
5	Expansion screw M8*70	4

12. PARTS DIAGRAM&LISTS

MODEL WHEELBASE KITS OF SUCKR PRO +



NO.	Item	QTY	NO.	Item	QTY
1	Front wheel with brake	2	10	Screw 5*40 (Flat head)	2
2	Base	1	11	Rear wheel rod	1
3	Chain clip	1	12	Rear wheel rod spring	2
4	Screw 4*20	1	13	Fixed Screw M8*45	2
5	Gasket (φ14*φ5*0.7)	1	14	Screw Clip	2
6	Anti-static chain	1	15	Screw M6*16 (Cross head)	2
7	Rod stopper	2	16	Tank holder	1
8	Rear wheel	2			
9	Rear wheel gasket	2			

For more information's please visit or contact us on

www.ibigboi.com

hello@ibigboi.com

ANOTHER PRODUCT FROM BIGBOI INTERNATIONAL