

GYSMATIC TRUE COLOR [XXL]



REF.037236

Essential for safety, the GYSMATIC TRUE COLOR XXL optoelectronic hood protects the welder's face and eyes from UV, infrared and splashes. Fully automatic, the mask switches from clear to tinted state in a fraction of a second as soon as it is primed. Comes with a headband, it frees the welder's hands and offers all the necessary comfort for welding work.

CHARACTERISTICS

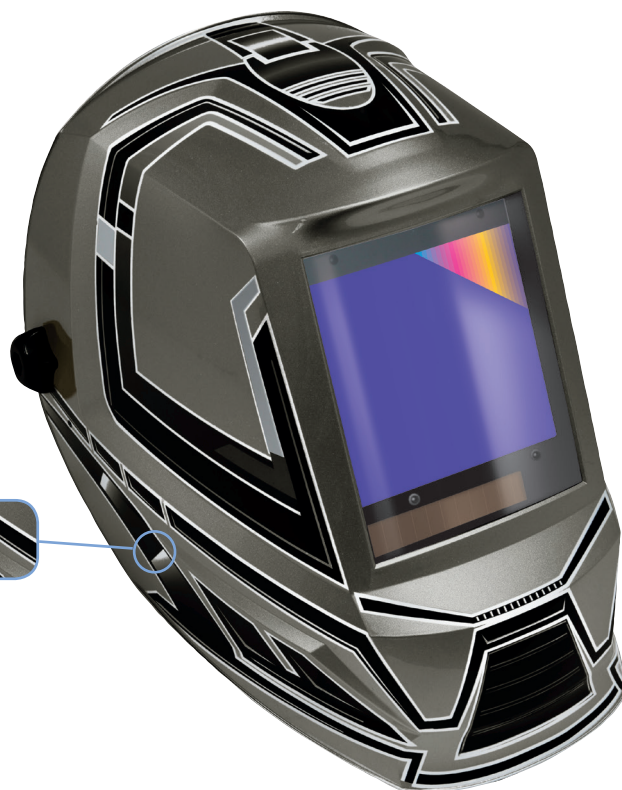
- Optimal visibility : XXL screen
- Touch sensitive buttons
(sensitivity / delay / shade / memory settings)
- Up to 3 memory settings can be stored.
- 4 sensors for improved performance.
- TIG welding > 2 A
- Choice of 7 different shades (5>13) suitable for all your welding and cutting operations.
- TRUE COLOR Technology



Standard LCD-screen



True color LCD Technologie



TECHNICAL DATA

Protection UV/IR	DIN 15
Classification	1/2/1/1
Clear shade	4
Dark shade	5-9 / 9-13
Reaction time	0,10 ms
Time to return to clear state	0,1 à 0,9 sec
Field vision	100 x 83 mm
Power supply	solar + battery (CR2450)
Weight	590 g
Settings	Sensitivity, delay, shade, grind lock, memory
Light sensor	4
Applications	MMA 5>400 / TIG 2>250 / MIG-MAG 5>400
Standards	CE / EN 175B / EN 166 / EN 379



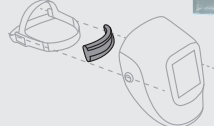
OPTIONS

Carry bag for helmet welding
043299



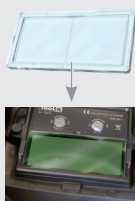
Antiperspirant - headband

043466
x2

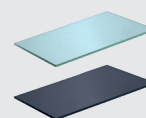


zoom x2

Magnifying glass
for Zeus, Spaceview,
Ergotech & Alien
True Color
x1
042780



Lenses



114 x 133 (x10)	106 x 89,5 (x10)
043893	046825