

*Levana*

Oma Sense™ Abdominal Movement Monitor

# Quick Start Guide



This device complies with Part 15 of the FCC Rules. Operation is subject to the following two conditions: (1) this device may not cause harmful interference, and (2) this device must accept any interference received, including interference that may cause undesired operation.

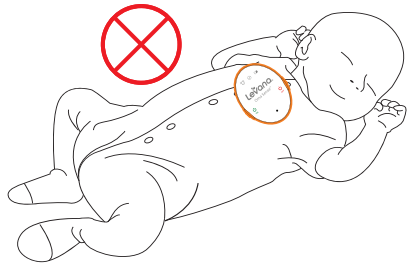
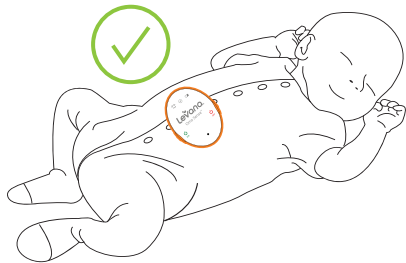
changes or modifications not expressly approved by the party responsible for compliance could void the user's authority to operate the equipment.

This equipment has been tested and found to comply with the limits for a Class B digital device, pursuant to Part 15 of the FCC Rules. These limits are designed to provide reasonable protection against harmful interference in a residential installation. This equipment generates, uses and can radiate radio frequency energy and, if not installed and used in accordance with the instructions, may cause harmful interference to radio communications. However, there is no guarantee that interference will not occur in a particular installation.

If this equipment does cause harmful interference to radio or television reception, which can be determined by turning the equipment off and on, the user is encouraged to try to correct the interference by one or more of the following measures:

- Reorient or relocate the receiving antenna.
- Increase the separation between the equipment and receiver.
- Connect the equipment into an outlet on a circuit different from that to which the receiver is connected.
- Consult the dealer or an experienced radio/TV technician for help.

# Avoid False Alarms



**IMPORTANT!** Watch video to learn  
about proper placement and usage.

[support.mylevana.com](https://support.mylevana.com)

**READ THE WARNING AND SAFETY INSTRUCTIONS IN ITS ENTIRETY BEFORE USING THIS PRODUCT. FAILURE TO FOLLOW THE WARNINGS AND THE INSTRUCTIONS COULD RESULT IN SERIOUS INJURY, INCLUDING DEATH. KEEP THE QUICK START GUIDE FOR FUTURE REFERENCE.**

**DISCLAIMER: MAIN PRODUCT**

THIS PRODUCT IS NOT A MEDICAL DEVICE. IT IS NOT INTENDED FOR THE DIAGNOSIS, EXAMINATION, MITIGATION, PREVENTION, TREATMENT OR MONITORING OF A DISEASE, INJURY OR IMPAIRMENT OF ANY KIND, DISORDER, ABNORMAL PHYSICAL STATE, OR ANY OF THEIR SYMPTOMS, INCLUDING BUT NOT LIMITED TO, SIDS (SUDDEN INFANT DEATH SYNDROME).

THIS PRODUCT IS NOT A SUBSTITUTE FOR PROFESSIONAL JUDGMENT BY ANY HEALTHCARE PROVIDER. YOU ARE ADVISED TO ALWAYS CONSULT A PHYSICIAN FOR QUESTIONS REGARDING A MEDICAL CONDITION. You should always follow pediatrician-recommended safe sleep practices when using the Oma Sense.

THIS PRODUCT IS ONLY MEANT FOR CHILDREN UP TO THE AGE OF 6 MONTHS. THIS PRODUCT SHOULD NOT BE USED DURING CO-SLEEPING.

Oma Sense is only intended to assist you in tracking your baby's well-being and is not intended to replace you as a caregiver. You are responsible for the health and well-being of your baby and following safe sleep, health, and care guidelines.

False-positive or false-negative readings about your baby's abdominal movement are a potential risk of Oma Sense. Possible causes of false-positive and/or false-negative include but not limited to:

- Sources of vibration & movement, other than your baby's, can be detected by Oma Sense

- Improper placement of Oma Sense, refer to page 10 of the Quick Start Guide.
- Damage to the sensor by electrical shock, drop, water, high temperature and/or humidity .
- Failure to replace batteries upon low battery warning, refer to page 7 of the Quick Start Guide.
- Oma Sense displacement caused by the movement of your baby.

Only use Oma Sense when the baby is placed in a motionless bed/cot. Do not use this device in car seat, stroller, swing or other mobile carriers as motion negates the functionality of the monitor.

DO NOT use a crib mobile and other crib accessories that may produce movements or vibrations.

IMMEDIATELY check on the baby whenever the alarm sounds.

It is strongly recommended to perform a self-test prior to each use of the unit. For self-test steps please refer to page 8 of the Quick Start Guide.

Adult assembly required. Keep small parts away from children when assembling.

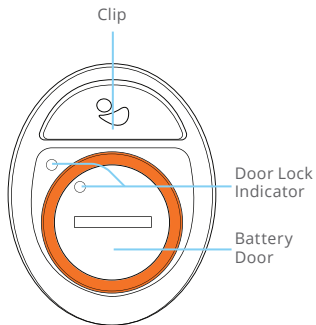
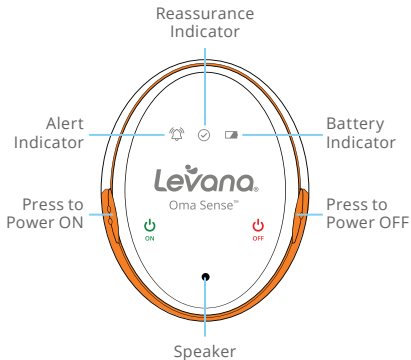
This product contains a Button Cell Battery and if swallowed can cause internal chemical burns in as little as two hours and lead to death. Dispose of used batteries immediately. Keep new and used batteries away from children. If you think the battery might have been swallowed or placed inside any part of the body, seek medical attention.

The Button Cell Battery represents a small part and a choking hazard – **KEEP away from children!**

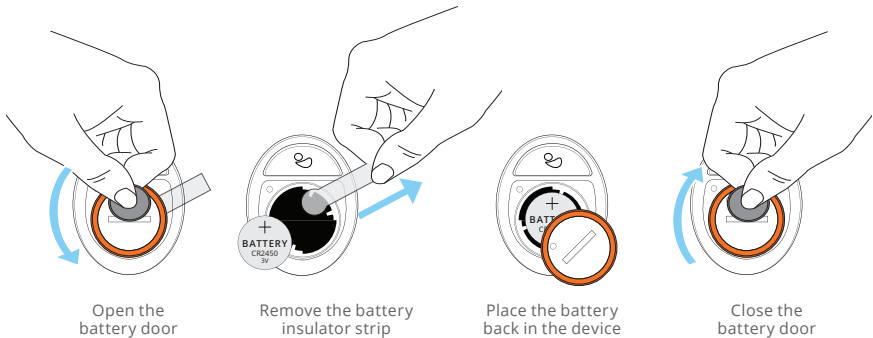
INTENDED USE: This device aids in monitoring the movement of a baby and is not a substitute for parental care.

# Getting to Know Oma Sense™

## Buttons and Functions



## Installing the Battery



**TIP:** The length of your battery will vary based on how often you use Oma Sense™. A red light will show on the front of the device when a battery change is required.

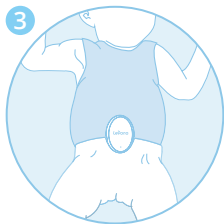
# Before Using Oma Sense™

Before putting your Oma Sense™ device on your child, complete a self-test each time to ensure your device is functioning. To do this;

- Turn on your Oma Sense™ and put the device on a stationary flat surface facing up.
- Wait 15 seconds. The device will be triggered and the LED light will flash red, the buzzer will continuously beep and the device will vibrate.
  - If this occurs, the test is successful. Turn off the device and back on before placing Oma Sense™ on your child.
  - If this does not occur, the test is unsuccessful. Please change the battery and repeat the self test. If you continue to experience issues, contact Levana for further assistance.



## Using Oma Sense™



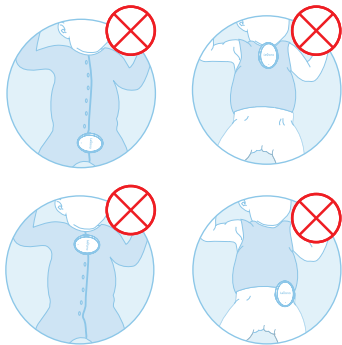
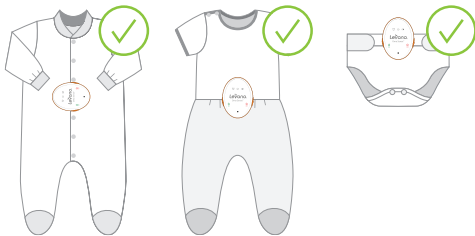
Do not insert anything or allow liquid to enter the speaker hole.

Oma Sense™ is splash resistant, not waterproof. Do not submerge in water. If device gets wet, dry immediately before using.

Wipe with a damp cloth or baby wipe to clean.

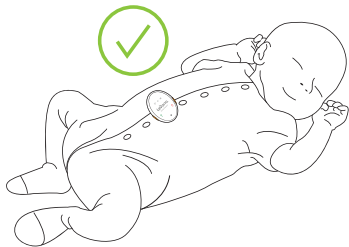
# Proper Placement

Oma Sense™ should be placed above the naval area where maximum abdominal movement can be detected.



**IMPORTANT:** Oma Sense™ is not designed for use with a swaddle.

## Correct Sleeping Positions



**IMPORTANT:** Only use Oma Sense™ when baby is in a motionless bed/cot. Do not use in a car seat, stroller, swing or other mobile carrier. The monitor will sense the motion of the carrier and will not properly monitor the baby's abdominal movements.

# How Oma Sense™ Works



## Reassurance LED

Oma Sense™ flashes a blue light every 30 seconds letting you know movement is being detected.



## 1<sup>st</sup> Alert

If no movement is detected for 15 seconds, randomized vibrations and audible alerts are initiated to stimulate baby.



## 2<sup>nd</sup> Alert

If regular movement is not re-established 5 seconds after the 1st Alert, an emergency alarm, LED lights, and audible alerts are initiated to notify parents attention is required.

# Indicator Lights



## Blue Flashing Light

On and Detecting Movement



## Green Light

Battery is OK



## Red Flashing Light

No Movement Detected



## Red Light

Replace Battery

## Best Oma Sense placement and how to avoid false alarms.



**Watch Video!**

Where Do I Put The Oma Sense™  
Movement Monitor?

# Activate Your Warranty



Member-Only  
Benefits



Videos,  
Tips & Updates



Hassle-Free  
Replacement



Open camera & scan this QR code or visit:  
[mylevana.com/warranty](https://mylevana.com/warranty)

## Frequently Asked Questions

### **Why can't I use Oma Sense™ while my baby is in a swing or car seat?**

Oma Sense™ is designed to detect your baby's abdominal movements without requiring direct contact with your little one's skin. With our patented WakeUp™ Technology, Oma Sense™ uses multiple sensors to analyze your baby's abdominal movements every 80 milliseconds. Additional movement from a swing, car seat or similar setting will affect the device's ability to properly detect if your baby's abdominal movements have stopped.

### **Why is Oma Sense™ not recommended for babies over 6 months old?**

Once your little one begins rolling onto their belly or fiddling with the monitor, we recommend discontinuing use. This usually occurs around the 6 month age. When your baby is sleeping on their tummy, belly movements are reduced and it becomes difficult for Oma Sense™ to detect abdominal movement. As a result, it may falsely alert you that something is wrong.



## **Do I need to charge my Oma Sense™ Battery?**

No! Oma Sense™ includes a Panasonic® 3V CR2450 coin cell battery that will last up to 30 days based on normal usage. We recommend always keeping a spare battery handy for when Oma Sense™ let's you know with a solid red light when the battery needs to be replaced.

## **Can I connect Oma Sense™ to my phone or Levana Video Baby Monitor?**

Oma Sense™ is a standalone abdominal movement monitor with zero Wi-Fi or Bluetooth signals, and therefore does not require connection to a smartphone or separate Video Baby Monitor to monitor your child. We recommend using the Oma Sense™ in tandem with a Video Baby Monitor to amplify the volume of the alarm if it were to sound while you are in a different room.

# Need More Help?

Our mission is to bring you the peace of mind you deserve during your parenting journey. If your experience with Oma Sense™ is anything short of amazing, we're here to fix that!



**Open camera & scan this QR code to** access all of our support articles & videos or visit: [mylevana.com/support](https://mylevana.com/support)



**WARNING**

**CHOKING HAZARD**

**Small Parts: Coin Battery**

Not for children under 6 years.

Keep new and used batteries out of the reach of children. Seek immediate medical attention if a battery is ingested and follow all Consensus medical advice right away.



Worry Less. Do More.™

[mylevana.com](https://mylevana.com)



REV10 02132023